

Gene expression

# Fast and efficient QTL mapper for thousands of molecular phenotypes

Halit Ongen<sup>1,2,3,†</sup>, Alfonso Buil<sup>1,2,3,†</sup>, Andrew Anand Brown<sup>1,2,3,4</sup>,  
Emmanouil T. Dermitzakis<sup>1,2,3,\*</sup> and Olivier Delaneau<sup>1,2,3,\*</sup>

<sup>1</sup>Department of Genetic Medicine and Development, University of Geneva Medical School, Geneva, Switzerland, <sup>2</sup>Institute for Genetics and Genomics in Geneva (iGE3), University of Geneva, Geneva, 1211, Switzerland, <sup>3</sup>Swiss Institute of Bioinformatics, Geneva, 1211, Switzerland and <sup>4</sup>NORMENT, KG Jebsen Centre for Psychosis Research, Institute of Clinical Medicine, University of Oslo, Norway

\*To whom correspondence should be addressed

†The authors wish it to be known that, in their opinion, the first two authors should be regarded as joint First Authors.

Associate Editor: Inanc Birol

Received on 10 July 2015; revised on 13 November 2015; accepted on 7 December 2015

## Abstract

**Motivation:** In order to discover quantitative trait loci, multi-dimensional genomic datasets combining DNA-seq and ChIP-/RNA-seq require methods that rapidly correlate tens of thousands of molecular phenotypes with millions of genetic variants while appropriately controlling for multiple testing.

**Results:** We have developed FastQTL, a method that implements a popular *cis*-QTL mapping strategy in a user- and cluster-friendly tool. FastQTL also proposes an efficient permutation procedure to control for multiple testing. The outcome of permutations is modeled using beta distributions trained from a few permutations and from which adjusted *P*-values can be estimated at any level of significance with little computational cost. The Geuvadis & GTEx pilot datasets can be now easily analyzed an order of magnitude faster than previous approaches.

**Availability and implementation:** Source code, binaries and comprehensive documentation of FastQTL are freely available to download at <http://fastqtl.sourceforge.net/>

**Contact:** emmanouil.dermitzakis@unige.ch or olivier.delaneau@unige.ch

**Supplementary information:** [Supplementary data](#) are available at *Bioinformatics* online.

## 1 Introduction

Genome-wide association studies have shown that most common trait-associated variants fall into non-coding genomic regions and likely alter gene regulation (Maurano *et al.*, 2012; Nica *et al.*, 2010). This has motivated large-scale studies to catalog candidate regulatory variants (quantitative trait loci; QTLs) associated with various molecular phenotypes (i.e. quantitative molecular traits with a genomic location) across various populations (Lappalainen *et al.*, 2013), cell (Fairfax *et al.*, 2012) and tissue types (GTEx Consortium, 2015; Ongen *et al.*, 2014). Mapping QTLs in this context usually consists of finding statistically significant associations between phenotype quantifications and nearby genetic variants; task

commonly undertaken using linear regressions (GTEx Consortium, 2015). Alternative approaches have also been developed to increase discovery power by accounting for confounding factors (Fusi *et al.*, 2012), integrating functional annotations (Gaffney *et al.*, 2012), leveraging allelic imbalance (van de Geijn *et al.*, 2015) or aggregating measurements across multiple tissues (Flutre *et al.*, 2013). In practice, this requires millions of association tests in order to scan all possible phenotype-variant pairs in *cis* (i.e. variants located within a specific window around a phenotype), resulting in millions of nominal *P*-values. Matrix eQTL (Shabalin, 2012) has recently emerged as a ‘gold standard’ for this task (GTEx Consortium, 2015; Lappalainen *et al.*, 2013) by taking advantage of efficient matrix

operation implementations to perform the many association tests in acceptable running times. Due to the large number of tests performed per phenotype, multiple testing has to be accounted for to assess the significance of any discovered candidate QTL. A first naive solution to this problem is to correct the nominal  $P$ -values for the number of tested variants using the Bonferroni method. However, due to the specific and highly variable nature of each genomic region being tested in terms of allele frequency and linkage disequilibrium (LD), the Bonferroni method usually proves to be overly stringent and results in many false negatives. To overcome this issue, a commonly adopted approach (Montgomery et al., 2010) is to analyze thousands of permuted datasets for each phenotype in order to empirically characterize the null distribution of associations (i.e. the distribution of  $P$ -values expected under the null hypothesis of no associations). Then, we can easily assess how likely an observed association obtained in the nominal pass originates from the null, resulting in an adjusted  $P$ -value. In practice, performing permutations in this context requires fast methods able to absorb such substantial computational loads in reasonable running times. Even though Matrix eQTL has been used so far in multiple large-scale studies (GTEx Consortium, 2015; Lappalainen et al., 2013), it still suffers from a main drawback which makes its practical application relatively laborious and time consuming: there is no efficient built-in permutation scheme forcing users to develop their own and therefore to use non-optimal multiple-testing correction methods. So far, a commonly employed permutation strategy relies on performing a fixed number of permutations per phenotype (1000–10 000) to control the running times at the cost of accurately assessing the statistical significance of the most strongly associated QTLs. Here, we present FastQTL, a user- and cluster-friendly QTL mapper, which improves upon Matrix eQTL by implementing a fast and efficient permutation scheme in which the null distribution of associations for a phenotype is modeled using a beta distribution. This allows us to approximate the tail of the null distribution relatively well using only few permutations, and then to accurately estimate adjusted  $P$ -values at any significance level in short running times.

## 2 Methods

### 2.1 Overview

FastQTL performs linear regressions between genotypes and molecular phenotypes with or without covariates in order to find the best nominal association for each phenotype (see Section 2.2). Then, it can correct for the multiple correlated variants tested via three different permutation schemes: (1) a direct permutation scheme that relies on a fixed number of permutations (see Section 2.3), (2) an adaptive permutation scheme which maintains a reasonable computational load by tailoring the number of permutations to the significance of the association (see Section 2.4) and (3) a beta approximation which models the permutation outcome via a beta distribution (see Section 2.5). For (1) and (2), an adjusted  $P$ -value per phenotype is calculated as the proportion of null associations found to be more significant than the nominal one. For (3), we model this null distribution of most significant  $P$ -values for a phenotype with a beta distribution, learning the parameters from a few permutations (typically 100–1000) by maximum likelihood estimation. As a result, we obtain a reasonably good approximation of the tail of null distribution to estimate small adjusted  $P$ -values at any significance level (i.e. without lower bound). In a final stage, a false discovery rate (FDR) procedure as implemented in the  $R/qvalue$  (Storey and Tibshirani, 2003) package is used on the set of adjusted

$P$ -values obtained either from (1), (2) or (3) to extract all significant phenotype-variant pairs at a given FDR, usually chosen to be 5% or 10% (see Section 2.6). All this, plus other optional functionalities, have been implemented in the FastQTL software package (see Section 2.7).

### 2.2 Finding a candidate QTL per phenotype

For simplicity, we will focus on a single molecular phenotype  $P$  quantified in a set of  $N$  samples. Let  $G$  be the set of genotype dosages at  $L$  variant sites located within a  $cis$ -window of  $\pm W$  Mb of the genomic location of  $P$ . To discover the best candidate QTL for  $P$ , FastQTL measures Pearson product-moment correlation coefficients between  $P$  and all  $L$  variants in  $G$ , stores the most strongly correlated variant  $q \in G$  as candidate QTL, and assesses its significance by calculating a nominal  $P$ -value  $p_n$  with standard significance tests for Pearson correlation. Note that this is equivalent to testing for  $\beta \neq 0$  in a linear model  $P = \beta g + \epsilon$  with  $\beta$  estimated by least squares fitting. Of note, this method is also used by Matrix eQTL to speed up linear regression (Methods 3.1 & 3.2 of Shabalin, 2012). Then, two multiple-testing levels are accounted for to determine the whole-genome significance of this nominal  $P$ -value and thereby to consider the corresponding variant  $q$  as a QTL: multiple genetic variants are tested per phenotype and multiple phenotypes are tested genome-wide. Following common usage, FastQTL uses permutations to correct for the former (see Sections 2.3–2.5) and FDR estimation to control for the latter (see Section 2.6).

### 2.3 Direct permutation scheme

The choice of a proper global significance threshold for nominal  $P$ -values is very difficult due to the fact that we test multiple variants per phenotype, correlated because of LD, across a wide allele frequency spectrum, while all this varies from one phenotype to another. To account for this, significance of a candidate QTL is assessed via permutations. Specifically, we repeat the  $cis$ -window scan procedure for  $R$  random permutations of  $P$ , leaving the genotype data  $G$  unchanged to preserve the correlation between variants. Each time, we store the strongest correlation; the goal is to produce a sample from the distribution of the strongest correlation under the complete null hypothesis of no genetic associations. Then, the observed correlation is compared with this empirical null distribution to obtain an adjusted  $P$ -value characterizing the significance of the candidate QTL. When very few null correlations are found to be stronger than the observed one, it means that reaching this correlation level by chance is very unlikely and therefore that the QTL candidate is likely to be true. More formally, if  $r$  correlations in the null distribution are found to be stronger than the observed, significance of the QTL candidate is assessed by calculating the following empirical adjusted  $P$ -value  $p_d$  of association (Phipson and Smyth, 2010):

$$p_d = \frac{r+1}{R+1} \quad (1)$$

By definition, such an adjusted  $P$ -value cannot be smaller than  $1/(R+1)$ ; meaning that a large number of permutations are needed to get precise estimates of small adjusted  $P$ -values, thereby increasing the computational burden. For instance, reaching  $P$ -values of  $\sim 10^{-3}$  requires thousands of permutations while billions are needed to get  $P$ -values of  $\sim 10^{-9}$ . In practice, it is very difficult to go beyond a few thousand permutations genome-wide with this approach, which forces us to work with adjusted  $P$ -values in the range of  $10^{-3}$  to 1.0. To alleviate this limitation, we improved the direct

permutation scheme with two complementary methods (see Sections 2.4 and 2.5).

## 2.4 Adaptive permutation scheme

From Equation (1), one can see that good estimation of insignificant adjusted  $P$ -values can be achieved with few permutations while many more are needed to estimate highly significant ones. Therefore, we implemented an alternative permutation scheme that adapts the number of permutations to the significance level of the variant–phenotype pairs (Hubner *et al.*, 2005). The resulting approach saves time at insignificant hits and invests more for significant ones, thereby maintaining a reasonable overall computational cost. Specifically, this adaptive scheme permutes  $P$  until a given number  $B$  (typically 100) of null correlations stronger than the observed one are found. To prevent this strategy running too long for the most significant variant–phenotype pairs, the algorithm cannot perform more than  $M$  (typically 100 000) permutations in total. Then, an adjusted  $P$ -value of association for a candidate QTL is derived using:

$$p_a = \frac{\min(r, B) + 1}{\min(R, M) + 1} \quad (2)$$

This strategy still remains unable to provide adjusted  $P$ -values below  $1/(M + 1)$ , though  $M$  can scale up to 100 000 in practice and thus provide good estimations for adjusted  $P$ -values down to  $\sim 10^{-5}$ .

## 2.5 Beta approximation

To provide adjusted  $P$ -values at any significance level without actually performing all required permutations, we developed an approximation method based on the beta distribution. It is well established that order statistics of independent uniformly distributed random variables are beta-distributed (Jones, 2009). Therefore, we hypothesized that the  $P$ -values obtained through permutations are also beta-distributed (Dudbridge and Koeleman, 2004). More formally, the  $k^{\text{th}}$  smallest value obtained when independently drawing  $n$  times from the uniform is distributed as:

$$U \sim \text{Beta}(k, n) \quad (3)$$

In our particular problem, we propose to model the smallest nominal  $P$ -value coming from  $L$  tests performed in a permutation pass as a beta distributed random variable with shape parameters  $k = 1$  and  $n = L$ . However, given that nearby variant sites usually exhibit some relatively high degree of correlation (LD), the  $L$  tests performed are not independent, implying that the effective number of tests  $n$  is lower than the actual number  $L$  of variants in *cis*. Instead of fixing the  $k$  and  $n$  parameters *a priori*, we use a more flexible approach in which the parameters are estimated by maximum likelihood (Galwey, 2009). Specifically, we perform  $R$  permutations to generate a null set of  $P$ -values  $\{p_1, \dots, p_R\}$  and then estimate  $k$  and  $n$  by maximizing the following log-likelihood:

$$L(k, n | p_1, \dots, p_R) = (k - 1) \sum_{r=1}^R \ln p_r + (n - 1) \sum_{r=1}^R \ln(1 - p_r) - R \ln \left[ \frac{\Gamma(k) \Gamma(n)}{\Gamma(kn)} \right] \quad (4)$$

Note that this maximization is done using standard numerical methods implemented in GNU Scientific Library. The underlying idea of this approach is to characterize the extreme tail of the null

distribution without directly sampling from it, something that would entail a huge computational burden. Finally, we can approximate an adjusted  $P$ -value  $p_b$  from the best nominal  $P$ -value  $p_n$  and from the maximum likelihood (ML) fitted beta distribution with:

$$p_b = P(U \leq p_n) \quad (5)$$

## 2.6 False discovery rate

Since thousands of molecular phenotypes are tested genome-wide, an FDR correction is commonly applied. This estimates the proportion of false positive findings, known as the FDR, by comparing the number of hits declared to the number that would be expected by chance. The Benjamini–Hochberg (BH) procedure (Benjamini and Hochberg, 1995) is one way of controlling the number of false positive results. However, this is too conservative in most of the QTL studies where we expect a substantial fraction of the phenotypes to be affected by genetic variants. To account for this, it is recommended instead the use of the FDR procedure described by Storey and Tibshirani (ST) (Storey and Tibshirani, 2003) which fits particularly well in this context. The ST procedure assumes that the set of association tests originates from a mixture of both the null and the alternative hypothesis and estimates  $\pi_0$ , defined as the proportion of hypotheses for which the null is true. Implicitly, the BH procedure assumes  $\pi_0$  is 1, whereas the ST procedure learns it from the data, resulting in more statistically significant hits. Of note, the adjusted  $P$ -values provided by FastQTL allow the users to easily apply whichever multiple testing correction they favor, from FDR to Bonferroni, since it provides adjusted  $P$ -values well calibrated on the full  $P$ -value range.

## 2.7 Implementation

FastQTL implements in C++ (see Sections 2.1–2.5) to provide an adjusted  $P$ -value per phenotype. An FDR procedure (see Section 2.6) is then straightforward to apply on the FastQTL output. In addition to the functionalities described above, FastQTL also implements some additional useful features worth mentioning here:

(1) To make the method more robust to outliers in the phenotype data, FastQTL has an option that allows to quantile normalize the phenotype quantifications prior to any analysis. This ensures that phenotype quantifications are normally distributed with mean 0 and standard deviation 1. Quantile normalization is implemented as in the *R/rntransform* function of the GenABEL package (Aulchenko *et al.*, 2007).

(2) Confounding factors such as population stratification and experimental batch effects have to be considered to prevent spurious associations. To do so, FastQTL can residualize both the genotypes and the phenotypes for quantitative and/or qualitative covariates prior to any association testing.

(3) FastQTL uses standard file formats: genotype dosages and phenotype quantifications are specified in Variant Calling Format and UCSC BED format, respectively. All files are required to be indexed with Tabix (Li, 2011) to enable fast retrieval of specific genomic regions.

(4) To split a genome-wide analysis into non-overlapping chunks and to run each on a distinct CPU core, FastQTL includes a set of user-friendly options. It can either split the data into a given number of chunk (--chunk 12 200 to run chunk 12 out of 200) or focus on a particular user defined genomic region (--region 20:1-1000000). The phenotype and genotype data included in the genomic region is then automatically extracted from the *cis*-window size and analyzed. A simple loop going through all possible chunks allows the user to

submit the full analysis on a compute cluster or server. A FastQTL example command line to perform a genome-wide analysis is shown in **command 1**.

```
(1) for c in $(seq 1 256); do
(2)     fastQTL --vcf genotypes.vcf.gz
(3)           --bed phenotypes.bed.gz
(4)           --chunk $c 256
(5)           --permute 1000
(6)           --output results.$c.txt.gz
(7) done
(8) zcat results.*.txt.gz | gzip -c > results.txt.gz
```

**Command1.** This shows the BASH script needed to run a genome-wide analysis. The genotypes and phenotypes are specified with `--vcf` (line 2) and `--bed` (line 3), respectively. The analysis is split into 256 non-overlapping chunks (lines 1 and 4) and is based on 1000 permutations (line 5). The full outcome is constructed by concatenating the per-chunk outcomes (line 8).

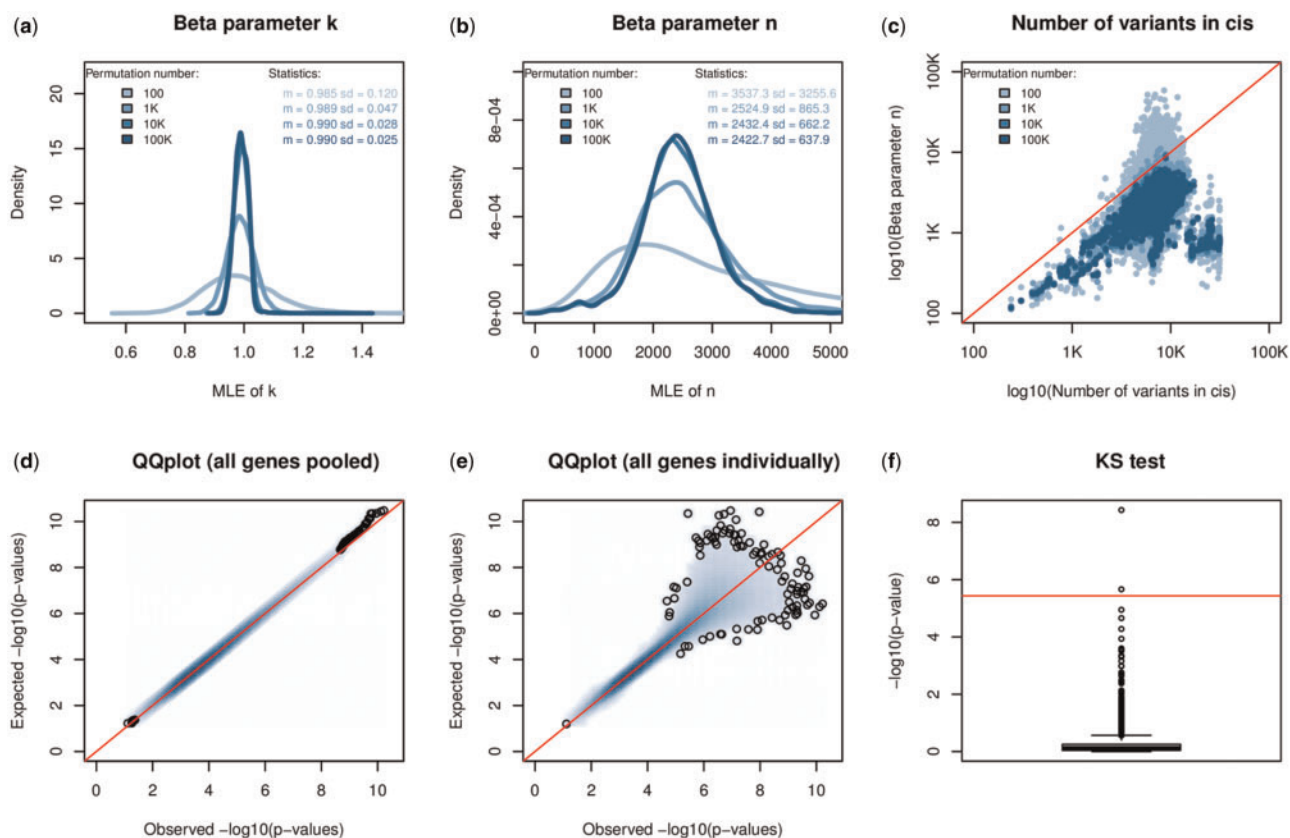
### 3. Results

To perform a comprehensive evaluation of FastQTL, we used RNA-seq and genotype data produced by both the Geuvadis (Lappalainen et al., 2013; Supplementary material 1) and the GTEx consortia (GTEx Consortium, 2015; Supplementary material 2), two of the

largest eQTL studies performed to date. This comprises a total of 10 distinct datasets with between 14 and 35K quantified genes and 6.8–10.8M variant sites for 83–373 samples (Supplementary Table 1).

In the context of this study, the two parameters of the beta distribution,  $k$  and  $n$ , can be interpreted as the rank of the associated variant and the effective number of independent tests performed in *cis*, respectively. We looked at the ML estimate distributions of these parameters across all genes in the GEUV\_EUR dataset and find first that parameter  $k$  values tend to center around 1.0, in line with what is expected for the top variant (Fig. 1a). Second, we find that the parameter  $n$  values show high dispersion (Fig. 1b) and are consistently smaller than the actual number of variants being tested in *cis* (Fig. 1c); both suggesting that the beta distribution captures well the redundancies between variants, a consequence of LD. This also highlights the importance of performing permutations instead of using a Bonferroni correction based on the number of variants, which would result in a substantial proportion of false negative results.

Then, we checked whether the null  $P$ -values coming from permutations are beta distributed again in the GEUV\_EUR dataset. To do so, we (1) stored for each phenotype the best  $P$ -values obtained from 1000 permutations as observations, (2) estimated  $k$  and  $n$  by ML from the 1000 resulting  $P$ -values, (3) simulated 1000  $P$ -values from the newly parameterized beta distribution as expectations and (4) compared both observations and expectations to assess their



**Fig. 1.** (a, b) Density plots of the  $k$  and  $n$  parameter ML estimates made from 100, 1K, 10K and 100K permutations on GEUV\_EUR. (c) A scatter plot of the number of variant sites tested per gene (*cis*-window  $\pm 1$ Mb of the TSS) against the  $n$  parameter ML estimates made again from 100, 1K, 10K and 100K permutations on GEUV\_EUR. (d, e) Quantile–Quantile plots of the best  $P$ -values obtained through 1000 permutations (observed) of the GEUV\_EUR dataset against simulated  $P$ -values sampled from the fitted beta distributions (expected). Expected  $P$ -values are plotted against the observed ones for all genes pooled together in (d) and for each gene separately in panel (e). (f) The KS test  $-\log_{10} P$ -values comparing observations and expectations for each gene. The red line shows the expected Bonferroni significance threshold when testing 13 703 genes

goodness-of-fit visually (QQ-plots) and statistically (one sample Kolmogorov–Smirnov test). Overall, we find very high degrees of concordance between results; both when pooling all genes together (Fig. 1d) and also when looking at each gene individually (Fig. 1e).

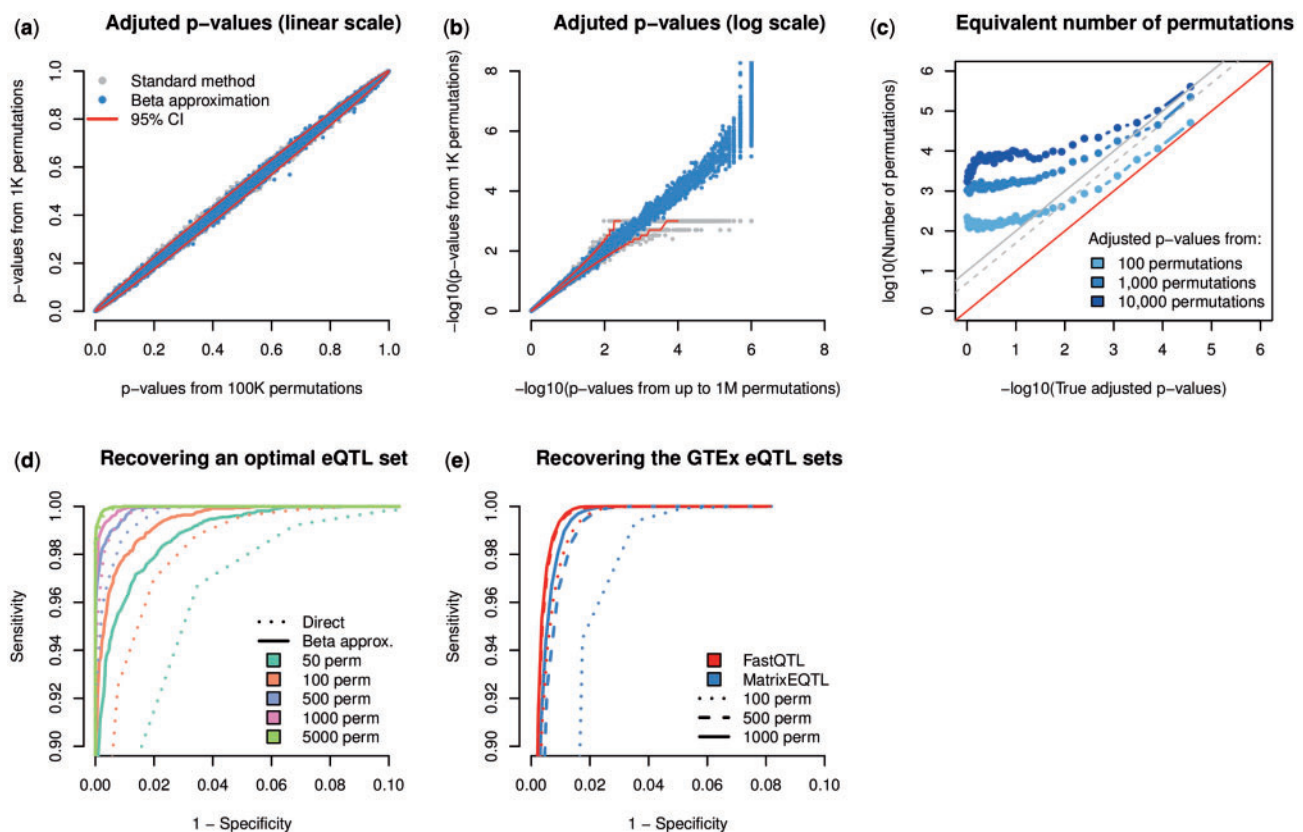
We only find that the beta distribution is not a good fit for two genes out of the 13 703 tested (Fig. 1f), these discrepancies are likely due to the stochastic nature of the simulations made in step (3). All this shows that the beta distribution is a good fit for the smallest null  $P$ -values generated via permutations and therefore a good candidate to model the permutation process outcome.

We next checked that the adjusted  $P$ -values produced via beta approximation are well calibrated by comparing them to those directly derived from a large number of permutations. We find a very good concordance on the full  $P$ -value range with some deviations within the expected sampling variation range (Fig. 2a, Supplementary Fig. 1a and b). Of note, the beta approximation provides small adjusted  $P$ -values that are better calibrated than those provided by the direct method (Fig. 2b, Supplementary Fig. 1c and d) and sometimes not even accessible (i.e. below the lower bound implied by the number of permutations); the smallest adjusted  $P$ -value estimated using the GEUV\_EUR dataset is in the order of  $\sim 10^{-128}$  (Supplementary Fig. 2). Therefore, we subsequently estimated the number of permutations that the direct method needs to reach the same level of

calibration as the beta approximation at various significance levels. To do so, we binned the adjusted  $P$ -values obtained from beta approximations and estimated for each bin, by exhaustive search, the number of permutations required by the direct method to match the same sampling variation (Supplementary material 3). We find that this number drastically increases as small-adjusted  $P$ -values are targeted (Fig. 2c). For instance, beta approximations made from 1000 permutations give adjusted  $P$ -values of  $10^{-4}$  as accurately as the direct approach with  $\sim 50$ K permutations.

Then, we looked at the downstream impact of the beta approximation on QTL discovery. To do so, we first generated an optimal 5% FDR eQTL set for GEUV\_EUR by running 100 000 permutations and then measured the sensitivity/specificity ratios of reasonable FastQTL configurations to recover this optimal set. Specifically, we run from 50 to 5000 permutations using either the beta approximation or the direct method to compute adjusted  $P$ -values. We find that using 500–5000 permutations allows us to approximate well the optimal set (Fig. 2d).

We also find that the beta approximation does consistently better than the direct method for the same number of permutations, especially when few permutations are used (50 or 100). As a consequence, using 500 permutations with the beta approximation, for example, has the same accuracy to recover the optimal set as the



**Fig. 2.** (a, b) Scatter plots of the adjusted  $P$ -values obtained from 1000 permutations via the direct method (in grey) and the beta approximation (in light blue) against those obtained through the standard permutation scheme with 100K permutations (a) or through the adaptive method with up to 1M permutations (b). All this was performed on the GEUV\_EUR dataset. Adjusted  $P$ -values are plotted on both linear (a) and log (b) scales. Expected variation for 1000 permutations is shown by the 95% confidence intervals in red. (c) The equivalent number of permutations required by the direct permutation scheme to reach the same calibration as the beta approximation (from 1000 permutations) as a function of the adjusted  $P$ -value targeted. The dashed and solid gray lines show the expected accuracy of the adaptive permutation scheme that stops when 5 and 10 stronger null signals are found, respectively. (d) The sensitivity–specificity ratio of reasonable FastQTL runs (beta approximation or direct method with 50–5000 permutations) to recover an optimal eQTL set derived from 100 000 permutations. (e) The sensitivity–specificity ratio to recover the nine official eQTL sets released by the GTEx consortium using both Matrix eQTL (direct method) and FastQTL (beta approximation) with 100, 500 and 1000 permutations

**Table 1.** FastQTL and Matrix eQTL running times

Number of permutations	Matrix eQTL 1000	FastQTL		
		1000	500	100
GTEX_AS	337.4	19	10.8	3.5
GTEX_AT	330.3	21	10.8	3.6
GTEX_HLV	312.4	15	8	3
GTEX_L	364.9	25.6	13.1	4
GTEX_MS	335.9	23.6	12.6	3.9
GTEX_NT	343.8	18.4	9.5	3.4
GTEX_SSEL	349.7	20.7	10.8	3.6
GTEX_T	358.1	22.3	11.8	3.9
GTEX_WB	340.5	25.5	13.7	4.1
ALL	3073	191.1	101.1	33

Table 1 shows the running times in CPU hours to produce the results shown in Figure 2e; nine GTEx datasets (column 1) processed with 1000 Matrix eQTL permutations (column 2) and FastQTL with 1000 (column 3), 500 (column 4) and 100 permutations (column 5). Total running times for all nine datasets together are shown in the last row.

direct method using 1000 permutations. Interestingly, the beta approximation using only 50/100 permutations already does very well at recovering the optimal eQTL set.

Finally, we investigated the speed and accuracy with which Matrix eQTL (direct method) and FastQTL (beta approximation) using 100, 500 and 1000 permutations could reproduce the outcome of the pilot phase of GTEx; a large-scale eQTL mapping study. Of note, we run Matrix eQTL in the most highly effective setting we could achieve in order to fully utilize its matrix based design (Supplementary material 4). Overall, we find that both FastQTL and Matrix eQTL recapitulate the official eQTL set well, especially as the number of permutations increases (Fig. 2e). For the same number of permutations, we find that the closest eQTL set to the official one is consistently provided by FastQTL. Again, it also performs well even when only 100 permutations are used to fit the beta distributions. To process all nine datasets with 1000 permutations, FastQTL requires ~191 CPU hours which is ~16 times faster than running the same number of permutations with Matrix eQTL (Table 1). When using only 100 permutations, this is reduced to only ~33 CPU hours.

## 4. Conclusion

We present FastQTL, a QTL mapper in cis for molecular phenotypes that implements a new permutation scheme to accurately and rapidly correct for multiple-testing at both the genotype and phenotype levels. FastQTL has several advantages compared with existing methods, making it the ideal candidate to map QTLs for the coming wave of large-scale datasets regrouping many different layers of molecular phenotypes and near complete collection of variant sites. First, permutations are modeled with a beta distribution, parameterized from a relatively small number of permutations. This results in accurate adjusted *P*-values which could not be feasibly obtained by standard or adaptive permutation analysis; for example down to  $10^{-128}$  in the Geuvadis dataset. In practice, having well-calibrated adjusted *P*-values on the full range (0, 1) is of crucial importance to (1) estimate the number of tests made under the null (quantity underlying efficient FDR correction methods) and to (2) meta-analyze multiple QTL studies together. Second, the beta approximation behaves well enough with only 100 permutations to rapidly assess the impact on the analysis of important parameters such as cis-window size and covariates like the number of PEER factors

(Stegle et al., 2012). And finally, FastQTL is fast (~16× faster than Matrix eQTL for the same number of permutations) due to an efficient implementation of linear regressions, optimized C++ code, efficient permutation schemes and rapid data retrieval from indexed files, while remaining user and cluster friendly. To summarize, FastQTL provides better adjusted *P*-values than the best method so far, Matrix eQTL with a direct permutation scheme, while being significantly faster. In addition, FastQTL also provides a modular base onto which new functionalities are being implemented, such as fine mapping of causal variants, conditional analysis to discover multiple independent QTLs per phenotype and interaction analysis to discover sex or disease specific QTLs.

## Acknowledgement

The computations were performed at the Vital-IT Swiss Institute of Bioinformatics.

## Funding

This research is supported by grants from European Commission SYSCOL FP7, European Research Council, Louis Jeantet Foundation, Swiss National Science Foundation, SystemsX, the NIH-NIMH (GTEx) and Helse Sør Øst.

*Conflict of Interest:* none declared.

## References

- Aulchenko, Y.S. et al. (2007) GenABEL: an R library for genome-wide association analysis. *Bioinformatics*, **23**, 1294–1296.
- Benjamini, Y. and Hochberg, Y. (1995) Controlling the false discovery rate: a practical and powerful approach to multiple testing. *J. R. Stat. Soc.*, **57**, 289–300.
- Dudbridge, F. and Koeleman, B.P. (2004) Efficient computation of significance levels for multiple associations in large studies of correlated data, including genomewide association studies. *Am. J. Hum. Genet.*, **75**, 424–435.
- Fairfax, B.P. et al. (2012) Genetics of gene expression in primary immune cells identifies cell type-specific master regulators and roles of HLA alleles. *Nat. Genet.*, **44**, 502–510.
- Flutre, T. et al. (2013) A statistical framework for joint eQTL analysis in multiple tissues. *PLoS Genet.*, **9**, e1003486.
- Fusi, N. et al. (2012) Joint modelling of confounding factors and prominent genetic regulators provides increased accuracy in genetical genomics studies. *PLoS Comput. Biol.*, **8**, e1002330.
- Gaffney, D.J. (2012) Dissecting the regulatory architecture of gene expression QTLs. *Genome Biol.*, **13**, R7 (2012 Jan 31)
- Galwey, N.W. (2009) A new measure of the effective number of tests, a practical tool for comparing families of non-independent significance tests. *Genet. Epidemiol.*, **33**, 559–568.
- GTEx Consortium (2015) The Genotype-Tissue Expression (GTEx) pilot analysis: multitissue gene regulation in humans. *Science*, **348**, 648–660.
- Hubner, N. et al. (2005) Integrated transcriptional profiling and linkage analysis for identification of genes underlying disease. *Nat. Genet.*, **37**, 243–253.
- Jones, M.C. (2009) Kumaraswamy's distribution: a beta-type distribution with some tractability advantages. *Stat. Methodol.*, **6**, 70–81.
- Lappalainen, T. et al. (2013) Transcriptome and genome sequencing uncovers functional variation in humans. *Nature*, **501**, 506–511.
- Li, H. (2011) Tabix: fast retrieval of sequence features from generic TAB-delimited files. *Bioinformatics*, **27**, 718–719.
- Maurano, M.T. et al. (2012) Systematic localization of common disease-associated variation in regulatory DNA. *Science*, **337**, 1190–1195.
- Montgomery, S.B. et al. (2010) Transcriptome genetics using second generation sequencing in a Caucasian population. *Nature*, **464**, 773–777.
- Nica, A.C. et al. (2010) Candidate causal regulatory effects by integration of expression QTLs with complex trait genetic associations. *PLoS Genet.*, **6**, e1000895.

- Ongen,H. *et al.* (2014) Putative cis-regulatory drivers in colorectal cancer. *Nature*, **512**, 87–90.
- Phipson,B. and Smyth,G.K. (2010) Permutation P-values should never be zero: calculating exact P-values when permutations are randomly drawn. *Stat. Appl. Genet. Mol. Biol.*, **9**, Article39. doi:10.2202/1544-6115.1585.
- Shabalín,A.A. (2012) Matrix eQTL: ultra fast eQTL analysis via large matrix operations. *Bioinformatics*, **28**, 1353–1358.
- Stegle,O. *et al.* (2012) Using probabilistic estimation of expression residuals (PEER) to obtain increased power and interpretability of gene expression analyses. *Nat. Protoc.*, **7**, 500–507.
- Storey,J.D. and Tibshirani,R. (2003) Statistical significance for genomewide studies. *Proc. Natl Acad. Sci.*, **100**, 9440–9445.
- van de Geijn,B. *et al.* (2015) WASP: allele-specific software for robust molecular quantitative trait locus discovery. *Nat. Methods*, **12**, 1061–1063.