

Regulated sodium transport in the renal connecting tubule (CNT) *via* the epithelial sodium channel (ENaC)

Johannes Loffing · Christoph Korbmacher

Received: 14 January 2009 / Revised: 18 February 2009 / Accepted: 22 February 2009 / Published online: 11 March 2009
© Springer-Verlag 2009

Abstract The aldosterone-sensitive distal nephron (ASDN) includes the late distal convoluted tubule 2, the connecting tubule (CNT) and the collecting duct. The appropriate regulation of sodium (Na^+) absorption in the ASDN is essential to precisely match urinary Na^+ excretion to dietary Na^+ intake whilst taking extra-renal Na^+ losses into account. There is increasing evidence that Na^+ transport in the CNT is of particular importance for the maintenance of body Na^+ balance and for the long-term control of extracellular fluid volume and arterial blood pressure. Na^+ transport in the CNT critically depends on the activity and abundance of the amiloride-sensitive epithelial sodium channel (ENaC) in the luminal membrane of the CNT cells. As a rate-limiting step for transepithelial Na^+ transport, ENaC is the main target of hormones (e.g. aldosterone, angiotensin II, vasopressin and insulin/insulin-like growth factor 1) to adjust transepithelial Na^+ transport in this tubular segment. In this review, we highlight the structural and functional properties of the CNT that contribute to the high Na^+ transport capacity of this segment. Moreover, we discuss some aspects of the complex pathways and molecular mechanisms involved in ENaC regulation by hormones, kinases, proteases and associated proteins that control its function. Whilst cultured

cells and heterologous expression systems have greatly advanced our knowledge about some of these regulatory mechanisms, future studies will have to determine the relative importance of the various pathways in the native tubule and in particular in the CNT.

Keywords Kidney · Epithelial sodium channel · Aldosterone · Hypertension · Amiloride

Introduction

Regulation of renal sodium (Na^+) excretion is crucial for the maintenance of extracellular salt and volume homeostasis and thus for blood pressure control. The final adjustment of renal Na^+ excretion is achieved in the aldosterone-sensitive distal nephron (ASDN) which comprises the late distal convoluted tubule 2 (DCT2), the connecting tubule (CNT) and the collecting duct (CD; see Fig. 1a). Aldosterone-sensitivity is conferred to the ASDN by the mineralocorticoid receptor (MR) and the enzyme 11- β hydroxysteroid dehydrogenase type 2 (11 β HSD2) that protects the MR from activation by glucocorticoids by rapidly degrading them to inactive metabolites. Trans-epithelial sodium transport in the ASDN is mediated by the epithelial sodium channel (ENaC) and the Na-K-ATPase in the luminal and basolateral plasma membrane, respectively (Fig. 1b). The function of both is tightly controlled by aldosterone and other hormones as well as by many extra- and intracellular factors.

Although the ASDN re-absorbs less than 10% of the filtered sodium (Na^+) load, the ASDN is finally decisive for the amount of Na^+ that appears in the urine [210, 246]. The ASDN is also the tubular site for net renal potassium (K^+) excretion, contributes to renal acid secretion and comprises

J. Loffing (✉)

Institute of Anatomy, University of Zurich,
Winterthurerstrasse 190,
8057 Zurich, Switzerland
e-mail: johannes.loffing@anatom.uzh.ch

C. Korbmacher (✉)

Institut für Zelluläre und Molekulare Physiologie,
Universität Erlangen-Nürnberg,
Waldstr. 6,
91054 Erlangen, Germany
e-mail: Christoph.Korbmacher@physiologie2.med.uni-erlangen.de

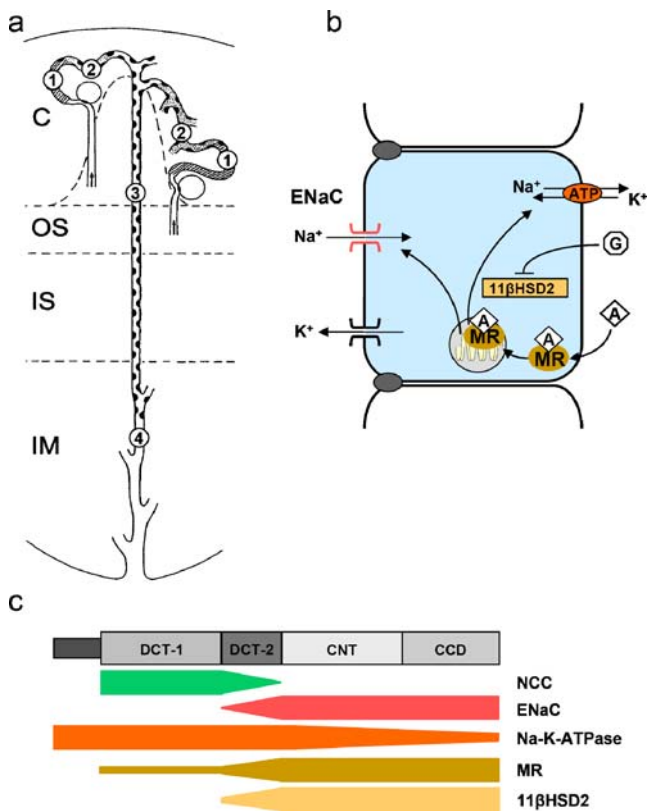


Fig. 1 The aldosterone-sensitive distal nephron. **a** Segmental organization: The ASDN comprises the end portion of the distal convoluted tubule (1; i.e. the DCT2), the connecting tubule (CNT; 2) and the collecting duct (CD) with its cortical (CCD; 3) and medullary (4) portions. The dark shaded areas in the tubule represent intercalated cells that are interspersed between the segment-specific cells of the DCT2, CNT and CD. The different kidney zones are indicated as C cortex, OS outer stripe of outer medulla, IS inner stripe of outer medulla, IM inner medulla. Note the different structure of the CNT of the superficial (unbranched) and the deep nephron (one arcade with several inflows from other CNTs). **b** Simplified ASDN cell model depicting the key characteristics of the ASDN: The epithelial sodium channel (ENaC), the Na-K-ATPase, the mineralocorticoid receptor (MR) and the enzyme 11- β -hydroxysteroid dehydrogenase type 2 (11 β HSD2) as well as an apical potassium channel. **c** Distribution of ENaC, Na-K-ATPase, MR and 11 β HSD2 along the different ASDN segments in rodents. Distribution of the DCT-specific thiazide-sensitive NCC is also indicated. Changing heights of individual bars indicate axial differences in protein abundance. **a** Adapted from [157] with permission, data in **c** refer to [14, 160, 199]. For more details see text

sites for regulated transcellular magnesium and calcium reabsorption in the kidney [37, 68, 134, 246, 268, 352]. Several human tubulopathies, genetic and acquired, have been attributed to specific dysfunctions of ion transporting proteins in the ASDN [111, 194, 282]. Transgenic mouse models, mimicking human diseases, underscore the key role of the ASDN for ion homeostasis [96, 111, 143, 288]. The detailed physiology and pathophysiology of the DCT, CNT and CD as well as that of their ion transporting proteins have been discussed in depths in several recent

reviews (e.g. [20, 26, 27, 47, 87, 97, 108, 111, 134, 162, 170, 187, 208, 220, 246, 254, 257, 282, 283, 285, 286, 291, 313, 318, 338] and several articles in this special issue of the journal [37, 288, 352]. Here, we will specifically focus on the mechanisms of Na⁺ transport and its regulation in the CNT since evidence is emerging that this nephron segment is particularly important for the maintenance of Na⁺ balance and the long-term control of arterial blood pressure [220, 246]

Histology and embryology of the CNT

The term “connecting tubule” originates from the fact that the CNT connects the DCT with the cortical collecting duct (CCD). The phylogenetic and embryological origin of the CNT is uncertain. A distinct tubular segment with expression of CNT-specific marker molecules is detectable already during the pronephric development in *Xenopus laevis*, indicating that the CNT evolved quite early in the evolution of the mammalian nephron, probably more than 360,000 million years ago [264]. Also during metanephric development of the rat kidney, a sharp cytogenetic border between the immature CNT and the taller and darker-stained ampullary epithelium of the collecting duct is consistently seen [234]. The sharp boundary diminishes with progressive differentiation of the CNT, but the junction between CNT and CD usually persists in the upper third of the medullary rays at the border between cortical labyrinth and medullary ray [234] as indicated in Fig. 1a. Based on these morphological observations and additional immunohistochemical criteria, investigators concluded that CNT and CD are distinct entities which originated from the nephrogenic blastema and the ureteric bud, respectively [154, 234, 244]. However, others proposed that both CNT and CD arise from the branching ureteric bud [137]. Schmitt and co-workers raised a third hypothesis suggesting that the CNT develops by mutual induction processes initiated at the border of adjoining segments [299]. This would finally lead to a unique hybrid epithelium. Consistent with this idea, the CNT of the adult kidney shares characteristics of both the upstream nephrogenic DCT and the downstream ureteric CD. Like the DCT, the CNT expresses high amounts of calcium transporting proteins in the apical and basolateral plasma membrane [14, 199]. Like the CD, the CNT has numerous intercalated cells and expresses high levels of ENaC and, in some species (e.g. rat, mouse and humans), also the vasopressin-sensitive water channel aquaporin-2 (AQP-2) [199].

The morphology and structure of the CNT is complex. Like in the collecting duct, the epithelium of the CNT is composed by two distinct cell types, namely segment-specific CNT cells and intercalated cells [81, 153, 164, 207]. The segment-

specific CNT cells are the Na^+ -re-absorbing cells, whilst the intercalated cells are involved in the renal control of acid–base homeostasis (for more details on intercalated cells, see Wagner et al. [345] in this special issue). The segment-specific CNT cells reveal an ultrastructure that is intermediate between that of the typical DCT and CD principal cells [81, 155, 207]. The CNT cells have less mitochondria and basolateral plasma membrane infoldings than the DCT cells, but are considerably taller and have more mitochondria than the principal cells of the CCD [153, 155, 207]. The abundance of basolateral plasma membrane infoldings and mitochondria progressively decreases along the axis of the CNT to the CD [81, 155] consistent with axial differences of ion transport rates along the CNT and the CCD (see below) [155, 199, 207]. The transitions from DCT to CNT and from CNT to CCD are clearly demarcated only in the rabbit, whilst they are more gradual in the mouse, rat and human kidneys (reviewed in [199]). These structural differences are also reflected in some differences in the serial arrangement of ion and water transporting proteins between these species [199]. In particular, mouse, rat and human kidneys reveal at the transition from DCT to CNT a short nephron portion, in which the DCT-specific thiazide-sensitive NaCl co-transporter (NCC) overlaps with ENaC [14, 197, 299]. As this portion expresses NCC, it is considered to be part of the DCT. Bachmann and co-workers designated this late DCT portion DCT2 in distinction from the early DCT (DCT1) that is NCC-positive but ENaC negative [14, 299].

The structure of the CNT differs between nephron populations. Whilst the CNT of a superficial nephron is a rather simple tube that links one DCT with one CCD, the CNTs of mid-cortical and deep nephrons are more complex and merge to form the so-called arcades [153]. These arcades ascend in the cortical labyrinth along the cortical radial vessels before they open into the CCD in the medullary rays. The number of nephrons, which are drained by one arcade, varies amongst nephrons and amongst species [199]. A recent three-dimensional reconstruction of the mouse nephron revealed that in this species, six to seven nephrons are drained *via* the CNT to one CCD [367]. Although the individual CNT segments are rather short and in the rat have a length of about 0.5 mm [82], the contribution of the CNT to the tubular volume of the renal cortex should not be under-estimated. In the mouse kidney, the CNT accounts for more than 8% of the fractional cortical tubular volume, which is less than the fractional volume of the DCT (~12%) but clearly exceeds that of the CCD (~4%) [200]. Thus, in the CNT, the available luminal surface for sodium absorption is probably much greater than that available in the entire collecting duct.

Another morphological peculiarity that distinguishes the CNT from CD is the close apposition of the CNT to the

afferent arteriole of its own glomerulus [83]. This led to the speculation that the CNT and the afferent arteriole form another site for tubuloglomerular feedback, distinct from the one located at the macula densa region. Consistent with this idea, Morsing and colleagues showed that the glomerular filtration rate rises when the tubular fluid flow is interrupted in the connecting tubule [226]. Recent studies corroborated these early observations and indicated that the glomerular feedback mechanism in the CNT depends on the sodium transport activity of this segment [269] and is coupled to the release of prostaglandins and epoxyeicosatrienoic acids [270].

Sodium transport in the CNT

Transepithelial Na^+ transport across renal epithelia is a two-step process that involves Na^+ uptake from the tubular lumen into the epithelial cells and extrusion of Na^+ across the basolateral plasma membrane into the renal interstitium from where it is taken back into the blood stream by diffusion into the peritubular capillaries. Along the ASDN, including the CNT, the luminal Na^+ entry step is represented by ENaC whilst the basolateral extrusion of Na^+ is mediated by the Na-K-ATPase [97, 162]. The activity of ENaC and the Na-K-ATPase is electrogenic and generates a transepithelial potential difference that drives K^+ secretion *via* apical K^+ channels (Fig. 1b) such as the renal outer medulla potassium channel (ROMK) and the flow-dependent maxi K (BK) channels [121, 130, 246, 352]. Whilst ROMK is exclusively present in the ENaC expressing segment-specific cells [221, 247, 361], the BK channel appears to be expressed in both the segment-specific CNT cells and the intercalated cells as indicated by immunohistochemical data [120]. However, electrophysiological techniques detected BK channel activity mainly in intercalated cells [247]. Interestingly, the intercalated cells may not only secrete but also re-absorb K^+ . Intercalated cells possess an H-K-ATPase in their apical plasma membrane [94, 308, 334], which may enable these cells to transport K^+ against steep electrochemical gradients. By re-absorbing K^+ , intercalated cells may represent an important cellular pathway to limit renal K^+ losses during ENaC activation. A close link between ENaC-mediated Na^+ transport and intercalated cell function can be also deduced from the intriguing observation that the first appearance of intercalated cells along the nephron coincides precisely with the onset of ENaC expression as seen in rat [299], mouse [197] and rabbit [196] kidneys. Consistent with this idea, recent studies on mice deficient for pendrin, the apical $\text{Cl}^-/\text{HCO}_3^-$ exchanger of type B intercalated cells, pointed to a functional crosstalk between pendrin and ENaC along the ASDN [167]. Na^+ re-absorption *via* ENaC also

contributes to the osmotic gradient for vasopressin-dependent transepithelial water transport *via* the apical water channel AQP2 [16]. The importance of ENaC for Na^+ , K^+ and fluid homeostasis is emphasised by the observation that gain-of-function mutations of ENaC (Liddle's syndrome) or loss-of-function mutations of ENaC (pseudohypoaldosteronism type I, PHA-I) lead to severe arterial hypertension or renal salt wasting syndromes associated with hypokalemia and hyperkalemia, respectively [162, 282]. Likewise, transgenic mouse models deficient for ENaC sub-units develop a severe PHA-I phenotype and die shortly after birth because of severe renal salt wasting with hyperkalemia (β - or γ ENaC deficient mice) or because of an inability to clear their lungs from alveolar fluid (α ENaC-deficient mice) [288].

Molecular structure of ENaC

ENaC is a heteromultimeric channel composed of three homologous subunits (α , β , γ) with a 30% to 40% identity at the level of their amino acid sequence [50, 271]. Different techniques were used to assess the sub-unit stoichiometry of the native channel and resulted in models with either four [8, 62, 77, 100, 177] or eight to nine sub-units [90, 310]. In contrast, the recently published crystal structure of the related acid sensing ion channel acid-sensing ion channel 1 suggests that ENaC is a heterotrimer [51, 146]. However, this heterotrimeric model awaits confirmation by a crystal structure of ENaC. Each sub-unit of ENaC contains two transmembrane domains (M1 and M2), a large extra-cellular loop and short intra-cellular amino and carboxyl termini. With their M2 domains, all sub-units are thought to contribute to the channel pore [162]. Full activity of ENaC requires the co-expression of all three sub-units. Na^+ movement across the channel is highly sensitive to the diuretic amiloride ($\text{Ki} \sim 100$ nM) and corresponds to the electrophysiologically measurable amiloride-sensitive Na^+ transport in native epithelia [114, 162]. In addition to the well-characterised $\alpha\beta\gamma$ -sub-units, a fourth ENaC sub-unit, δ ENaC, has been cloned from a human kidney cDNA library with transcriptional expression in a range of tissues with the highest expression levels in testis, ovary, pancreas and brain. Small amounts of δ ENaC-mRNA were also detected in heart, placenta, lung, liver, kidney, thymus, prostate, colon and lymphocytes but not in small intestine and spleen [347, 363]. In heterologous expression systems, δ -ENaC has functional similarities with α ENaC. However, $\delta\beta\gamma$ -ENaC is more than an order of magnitude less sensitive to amiloride than $\alpha\beta\gamma$ -ENaC [149, 150, 347]. Moreover, $\delta\beta\gamma$ -ENaC but not $\alpha\beta\gamma$ -ENaC has been reported to be activated by extra-cellular protons [148, 363]. Another difference is the higher single-

channel Na^+ conductance of $\delta\beta\gamma$ -ENaC (~ 12 pS) compared to $\alpha\beta\gamma$ -ENaC (~ 5 pS) [347]. Interestingly, self-inhibition by extra-cellular Na^+ is less pronounced in $\delta\beta\gamma$ -hENaC than in $\alpha\beta\gamma$ -ENaC [150]. Na^+ self-inhibition is a biophysical hallmark of ENaC and is a mechanism to prevent an intracellular Na^+ overload in transporting epithelial cells in the presence of a high extracellular Na^+ concentration [31, 114, 135, 162, 330]. Whilst the inhibitory effect of extra-cellular Na^+ on ENaC is rapid and caused by an acute decrease in channel open probability (Na^+ self inhibition) [60], the inhibitory effect of an increased intracellular Na^+ concentration is a slower process and mainly involves a decrease in channel surface expression (Na^+ feedback inhibition) [161, 175, 342]. However, recent evidence suggests that intracellular Na^+ also inhibits ENaC through an inhibitory effect on open probability [7]. It is conceivable that the sensitivity of ENaC to Na^+ feedback regulation may need to be adjusted along the nephron according to the different luminal Na^+ concentrations in different nephron segments. It is tempting to speculate that this may be achieved for example by varying the relative expression of the δ - versus the α -subunit. However, at present, it is still unclear whether the δ -subunit of ENaC is relevant for transepithelial Na^+ transport in the kidney.

Importance of the CNT for Na^+ homeostasis

The “hidden” localisation of the CNT in the cortical labyrinth and its complex structure make the CNT difficult to isolate and to study by direct functional methods [220, 246]. Nevertheless, the ion transport, electrophysiological and morphological studies performed so far indicate that ENaC activity is high in the CNT and that this segment is of major relevance for the renal control of Na^+ homeostasis. Classical micro-puncture experiments on the rat “distal convolution”, which includes anatomically DCT and CNT portions, revealed that more than 90% of the Na^+ delivered to the distal convolution is re-absorbed in DCT and CNT [210] and does not even reach the downstream localised collecting duct. Moreover, micro-perfusion experiments demonstrated robust amiloride-sensitive Na^+ transport in “late” rat distal tubules (approximately DCT2 and CNT) [63], but not in collecting ducts [267, 328]. Furthermore, direct measurements of Na^+ fluxes in isolated rabbit renal tubules revealed three- to fourfold higher net Na^+ re-absorption rates in CNTs than in CCDs [4]. Likewise, transepithelial voltage differences, which are a useful indicator for ENaC activity, were reported to be more than seven times higher in the rabbit CNT than in the rabbit CCD [145]. Immunohistochemical studies corroborated these functional data by showing that the apical density of ENaC progressively decreases along the axis of the ASDN

as shown exemplary for the rabbit kidney in Fig. 2. In animals maintained on a standard laboratory diet, apical localisation of ENaC subunits is seen only in the early ASDN (i.e. the late DCT and early CNT in rat [292], mouse [197] and human [30] and the early CNT in rabbits [196]). In farther downstream portions (i.e. the middle and late portions of the CNT and the CD), ENaC resides predominantly at intracellular sites [196, 197, 214, 299]. Only the α ENaC subunit was reported to have a more pronounced apical localisation that extends into the collecting duct even under standard diet [123]. The functional significance of this observation is unclear but is consistent with a non-coordinated regulation of ENaC subunits observed in cultured *X. laevis* kidney A6 cells, an *in vitro* model system for the ASDN [353]. The restriction of apical ENaC abundance to early ASDN cells in immunohistochemical studies may explain why in recent patch-clamp studies on rat CNT, ENaC whole-cell currents were undetectable in CNTs of rats maintained on a standard salt diet, whilst large ENaC whole-cell currents were observed when animals were infused with aldosterone [106]. In contrast, a recent study in mice revealed sizeable ENaC whole-cell currents in late CNTs and early CCDs of animals maintained on a standard diet. These ENaC currents further increased when animals were maintained on a low Na^+ diet [235].

Collectively, these data indicate that under standard dietary conditions, renal ENaC activity is mainly localised in the early ASDN (i.e. the late DCT and early CNT). ENaC activity in the more distal portions of the ASDN is likely to increase when Na^+ absorption needs to be maximised to maintain Na^+ balance (e.g. in response to dietary Na^+ restriction or extracellular volume depletion) [197, 220]. In fact, a variety of functional and morphological studies on rat, mouse and rabbits showed that dietary Na^+ restriction or mineralocorticoid infusion extend apical ENaC activity [67, 106, 112, 245, 267, 328] and apical ENaC immunostaining [76, 197, 202, 214, 239, 287] from the early CNT into the downstream localised ASDN portions including the collecting duct. The variation of apical ENaC immunostaining in response to altered dietary Na^+ intake is schematically presented in Fig. 3.

In addition to the effects on ENaC, prolonged elevation of plasma aldosterone does also stimulate the basolateral Na^+ transport machinery (i.e. the mitochondrial volume, basolateral membrane area and the Na-K-ATPase activity per unit tubular length; reviewed in [97, 206]). Interestingly, although the relative amount of the increase of mitochondrial density, basolateral membrane area [156] and Na-K-ATPase activity [112, 184] is most pronounced in the collecting duct, the absolute values of these parameters still remain higher in CNT than in CD [112,

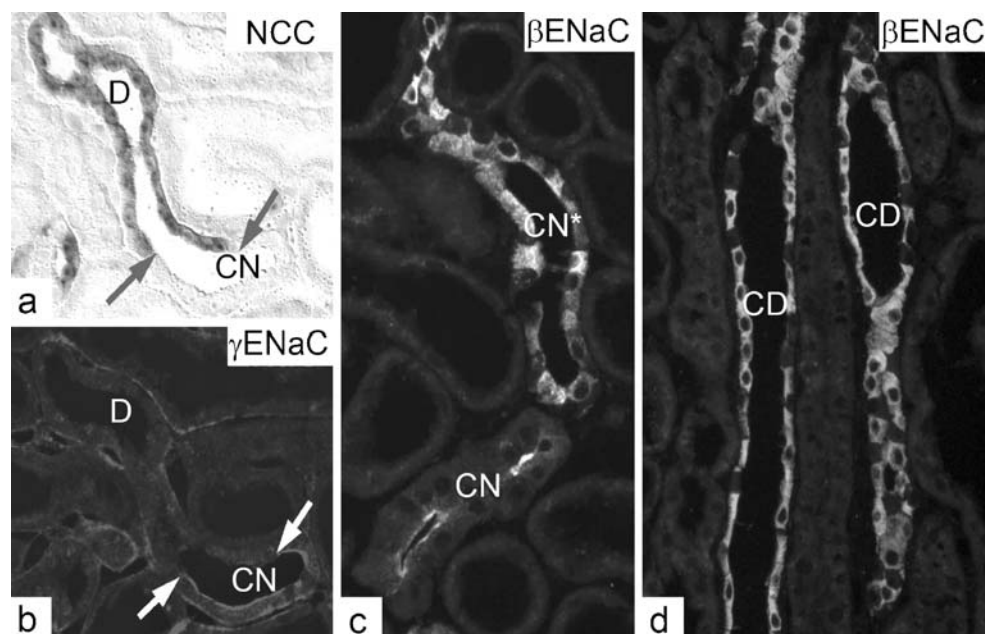


Fig. 2 Axial differences of apical ENaC localisation along the rabbit ASDN. **a** Detection of NCC mRNA by in situ hybridisation characterises the distal convoluted tubule (D). The NCC related signal ceases precisely at the transition (arrows) from D to the connecting tubule CN. **b** Immunohistochemical detection of γ ENaC begins precisely at the transition from D to CN and reveals a predominant apical localisation of ENaC in the early CN. **c** Immunohistochemical

detection of β ENaC shows also a predominant apical localisation of ENaC in the early CN whilst in farther downstream localised connecting tubules (CN*), ENaC is mainly located at intracellular sites. **c** Likewise, collecting ducts (CD) show a diffuse cytoplasmic distribution of β ENaC. Unstained cells in CN and CD epithelia in **c** and **d** represent intercalated cells. **a**, **b** Consecutive sections and were adapted from [196] with permission

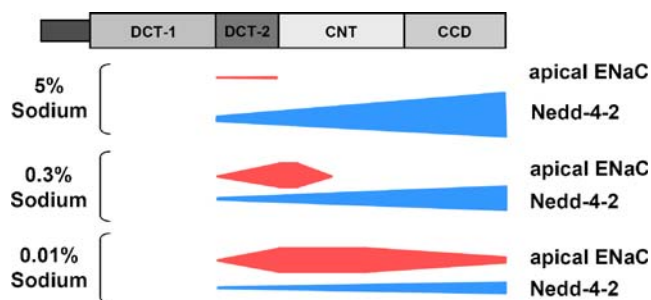


Fig. 3 Schematic presentation of axial differences of apical ENaC localisation and cytoplasmic Nedd4–2 abundances along the ASDN of mice kept for 2 weeks on a diet with high (5%), standard (0.3%) or low (0.01%) sodium content. *Heights of bars* indicate intensities of apical ENaC and cytoplasmic Nedd4–2 stainings as assessed by immunofluorescence on cryosections of mouse kidneys. Note the inverse relationship of apical ENaC and Nedd4–2 abundance along the ASDN and in response to altered dietary Na intake. Data refer to [195]

156, 184], suggesting that even under high aldosterone conditions, the Na^+ transport rates stay higher in the early ASDN portions. Consistent with these findings, immunohistochemical studies on mouse and rat kidneys as well as patch clamp studies on isolated rat renal tubules revealed a progressive decline of apical ENaC immunostaining and activity along the axis of the ASDN (CNT > CCD) even under conditions of severe Na^+ restriction [106, 197, 292]. The reason for this marked axial gradient along the ASDN is unclear. Axial differences in the expression levels of MR and $11\beta\text{HSD2}$ are probably not involved since they appear to be similar along CNT and CD [39, 84, 92]. Moreover, in response to aldosterone, the upregulation of αENaC and of the aldosterone-dependent kinase Sgk1 (see below) occur uniformly all along the ASDN [198]. Thus, other factors appear to be responsible for the differential regulation of apical ENaC abundance and activity along the ASDN. Recently, we revealed by immunohistochemical studies that the ubiquitin-ligase Nedd4–2, which reduces the cell surface abundance of ENaC in heterologous expression systems [1, 118], shows an axial gradient along the ASDN, which is inverse to that of ENaC and therefore may explain the axial gradient of apical ENaC [195]. The observed axial gradients of apical ENaC localisation and Nedd4–2 abundance as assessed by immunostainings are schematically presented in Fig. 3.

Independent of the underlying mechanism, the aforementioned data clearly indicate that the Na^+ transport capacity of the CNT exceeds by far the one of the CD. Indeed, using whole-cell current data and considering the anatomical length of the two segments, Frindt and Palmer estimated that the Na^+ transport capacity of the CNT is at least ten times higher than that of the CD [106]. The predominant functional importance of the DCT2 and CNT for ENaC-mediated Na^+ absorption is further supported by

the finding that mice with a collecting duct-specific gene inactivation of the α -subunit of ENaC are able to maintain Na^+ balance, even when challenged by salt restriction [287]. In contrast, mice with targeted deletion of the MR in the CD and late CNT but intact MR expression and ENaC regulation in early CNT and DCT2 show impaired Na^+ balance. Although the mice develop normally under standard diet, they continuously lose body weight and show signs of severe extra-cellular volume contraction under low Na^+ diet [279]. The data suggest that maintained MR-dependent ENaC regulation in DCT2 and early CNT is sufficient to keep mice in body Na^+ balance under standard conditions but not when stressed by dietary Na^+ restriction [279].

Regulation of ENaC—overview

The differences between CNT and CD with respect to Na^+ transport are more quantitative than qualitative [246, 287]. Indeed, the regulatory mechanisms controlling ENaC activity are probably quite similar along the ASDN. What differs along the axis of the ASDN is most likely the relative impact that each of these mechanisms has on ENaC regulation. ENaC is regulated by a variety of factors including hormones (e.g. aldosterone, angiotensin II, vasopressin, insulin, insulin-like growth factor I), extracellular and intra-cellular proteases (e.g. channel-activating proteases (CAP1-3), tissue kallikrein, furin), intra- and extracellular ion concentrations, osmolarity, tubular flow rate, as well as kinases (e.g. Sgk1, protein kinase A (PKA), extracellular-regulated kinase (ERK)) and interacting proteins (e.g. ubiquitin ligases, deubiquitinating proteases, Rab proteins) which have been discussed in detail in several recent reviews [20, 26, 27, 47, 87, 114, 142, 162, 169, 182, 187, 201, 208, 254, 260, 283, 285, 302, 313, 318, 322, 338]. We have not attempted to provide a comprehensive review of this vast and rapidly expanding field of research on ENaC regulation. Instead, we have limited our discussion in the following to some selected aspects of ENaC regulation thought to be relevant in the kidney and the CNT *in vivo*.

Regulation of ENaC by aldosterone

Aldosterone is the main hormonal regulator of ENaC-dependent Na^+ transport in the distal nephron [114, 162, 337]. Aldosterone binds to the intracellular MR, which upon translocation to the cell nucleus induces or represses the transcription of genes encoding proteins of the Na^+ -transporting machinery (e.g. ENaC, Na-K-ATPase) and proteins that regulate the activity of the Na^+ -transporting apparatus [109, 110]. A variety of *in vitro* and *in vivo* experiments

established that aldosterone specifically increases the synthesis of α ENaC in ASDN cells, whereas β - and γ ENaC are constitutively expressed (reviewed in [114, 162]). Changes in plasma aldosterone levels, either induced by dietary Na^+ restriction or by exogenous application of the hormone, induce a redistribution of ENaC subunits from intracellular compartments to the apical plasma membrane [76, 197, 198, 214]. The activation and apical translocation of ENaC occurs quite rapidly (within hours) and is probably relevant for the renal adaptation to day-to-day variations of Na^+ intake [104, 105, 198]. The observed apical recruitment of ENaC goes along with the appearance of low molecular weight forms of α - and γ ENaC subunits, which are thought to reflect increased proteolytic cleavage and activation of the channel [104, 214]. Recently, Frindt and co-workers performed cell surface biotinylation experiments on rat kidneys perfused with biotin *in situ*. These experiments showed that feeding a low Na^+ diet or the infusion of aldosterone for 1 week increases the cell surface pool of ENaC subunits by two- to fivefold. The experiments also indicated that in contrast to β ENaC, most of the α - and γ ENaC subunits at the cell surface are proteolytically cleaved [107].

Based on previous studies in *Xenopus laevis* A6 cells, it has been proposed that the induction of α ENaC might be a prerequisite for full assembly of ENaC in the ER and its subsequent delivery to the cell surface [217]. However, in the kidney *in vivo*, the induction of α ENaC protein by aldosterone is rather small [214] and, at least in the CCD, not necessarily followed by an apical re-distribution of all three ENaC subunits [198]. Moreover, apical targeting of ENaC apparently occurs even without previous α ENaC induction [238]. Thus, the induction of α ENaC alone cannot account for the apical targeting of ENaC. Other co-stimulatory factors are needed.

The Sgk1 kinase (serum- and glucocorticoid-regulated kinase), a member of the PKB/Akt family of serine/threonine kinases, has been identified as one of the aldosterone-induced regulatory proteins that impacts on ENaC cell surface expression and activity [182, 187, 201, 249]. Sgk1 is rapidly induced by aldosterone in ASDN model epithelia *in vitro* as well as in the kidney *in vivo* [57, 198, 232, 306]. Likewise, prolonged dietary Na^+ restriction increases Sgk1 mRNA expression in the kidney [136]. Co-expression of ENaC with Sgk1 in heterologous expression systems profoundly increases ENaC-mediated Na^+ currents probably by an accelerated insertion rate of ENaC into the plasma membrane [5]. The channel open probability might be increased as well [344], perhaps by direct phosphorylation of a specific serine residue in the C terminus of the channel's α -subunit [74]. The ubiquitin-ligase Nedd4–2 has been proposed to mediate at least some of the effects of Sgk1 on ENaC cell surface abundance. In heterologous expression systems, Sgk1-dependent phos-

phorylation of Nedd4–2 inhibits Nedd4–2 interaction with a proline-rich (PY)-motif in the C terminus of ENaC subunits and thereby presumably prevents Nedd4–2-induced ubiquitylation with subsequent endocytosis and degradation of ENaC subunits [70, 265, 311]. In mouse mpkCCD cells *in vitro* as well as in rat CCD *in vivo* aldosterone rapidly induces the phosphorylation of Nedd4–2 that precedes the activation and increased cell surface abundance of ENaC [101]. However, the observed effects are rather small and Nedd4–2 is significantly phosphorylated even in the absence of any aldosterone and aldosterone-induced Sgk1 [101] suggesting that other (possibly aldosterone-independent) kinases may contribute to the control of Nedd4–2 phosphorylation and activity. In fact, other kinases such as PKB/Akt and PKA were reported to phosphorylate Nedd4–2 as well [186, 312].

In addition to the rapid effects of aldosterone on Nedd4–2 phosphorylation, aldosterone may have chronic effects on Nedd4–2 protein levels, which might be relevant for the long-term adaptation of the ASDN to altered dietary Na^+ intake. In the mpkCCD cell line, prolonged aldosterone treatment was shown to reduce Nedd4–2 protein abundance. The decrease became clearly apparent at day 2 of aldosterone treatment and was most obvious at day 6 [195]. Likewise, in mice, dietary Na^+ restriction for 2 weeks reduced Nedd4–2 protein abundance (as assessed by immunohistochemical detection) along the ASDN [195]. Taken together, the data suggest a model in which the rapid effects of aldosterone on ENaC are mediated by altered Nedd4–2 phosphorylation whilst the more chronic effects (days) are related to changes in the abundance of Nedd4–2 protein.

Regulation of ENaC by angiotensin II

Extracellular volume depletion activates the renin–angiotensin–aldosterone system which in turn increases renal Na^+ and fluid retention to restore extracellular volume homeostasis and to maintain arterial blood pressure. Independent from its effect on adrenal aldosterone secretion, angiotensin II (AngII) directly stimulates amiloride-sensitive Na^+ re-absorption in late distal tubules [351] and in collecting ducts [251]. The effect is most pronounced when AngII is applied to the luminal side of the tubules and can be blocked by the AT(1) receptor inhibitors candesartan or losartan [251]. Consistent with a direct effect of AngII on ENaC-mediated Na^+ re-absorption, AngII binding sites and AT1 receptors were revealed by biochemical [227] and immunochemical [129] methods in distal tubules and the collecting duct. The demonstration of renin expression in the CNT and the finding that its expression is regulated by dietary Na^+ intake prompted Rohrwasser et al. to propose a

paracrine tubular renin–angiotensin system that may regulate ENaC function from the tubular lumen [278]. The rapid effects of AngII are likely related to the regulation of already pre-existing channels. However, there is increasing evidence that AngII may also impact on the synthesis rate of ENaC channels and that these effects are also independent from aldosterone. AT1 receptor knockout mice express less α ENaC despite elevated plasma aldosterone levels [42]. Likewise, in NaCl-restricted rats, 2 days of AT1 receptor inhibition reduced α ENaC mRNA and protein expression. This effect was independent from an aldosterone-dependent activation of the mineralocorticoid receptor. The reduced expression of α ENaC was accompanied by a lowered density of ENaC in the apical membrane of the renal collecting system. Conversely, long-term systemic infusion of AngII induced α ENaC expression in rat kidney cortex [23]. Moreover, AT1 receptor-dependent activation of ENaC was linked to the inappropriate renal Na^+ retention in diseases such as type 2 diabetes and obesity [205]. Taken together, the studies suggest that extracellular volume contraction, as it occurs during dietary Na^+ restriction, stimulates ENaC by both increased plasma aldosterone levels and enhanced AngII levels in plasma and urine.

Regulation of ENaC by vasopressin

Anti-diuretic hormone (ADH, vasopressin) enhances Na^+ absorption in *Xenopus laevis* kidney A6 cells [335] and in isolated rat cortical collecting ducts [298]. The effect of vasopressin is synergistic to that of aldosterone but occurs much more rapid [298, 335]. Vasopressin acts by binding to V2 receptors with subsequent activation of the adenylate cyclase. Its effect on Na^+ transport is mimicked by membrane permeable cAMP analogues, phosphodiesterase inhibition with 3-isobutyl-1-methylxanthine or adenylate cyclase activation with forskolin. In the kidney, V2 receptors and vasopressin-induced cAMP generation [223] were found in both the collecting duct and the CNT of rat [96, 228], mouse [228] and human [228], suggesting that in these species, ENaC regulation by vasopressin may occur in both segments of the ASDN. Chronic stimulation of the V2 receptor was reported to reduce Na^+ excretion in healthy humans further indicating that the cAMP pathway of ENaC regulation is relevant for Na^+ homeostasis in humans [16].

Functional studies on *Xenopus laevis* kidney A6 cells demonstrated that the acute activation of Na^+ channels by vasopressin depends on intact microtubules [336] and Golgi apparatus [168] suggesting that the vasopressin-induced activation of ENaC is caused by enhanced trafficking of channels from an intra-cellular pool to the apical plasma membrane. Using a combination of short circuit current

(I_{SC}) measurements and antibody detection of epitope tagged ENaC, Morris and co-workers provided quantitative evidence that in MDCK cells stably expressing ENaC the increase in I_{SC} produced by cAMP can be accounted for entirely by a proportional increase in the surface density of ENaC [225]. Cell surface biotinylation experiments in mpkCCD cells with endogenous ENaC expression further confirmed the model that the acute ENaC stimulation by cAMP is mediated by exocytic insertion from a recycling channel pool [44]. However, in spite of all these convincing in vitro data, direct evidence that vasopressin increases the cell surface abundance of ENaC in the ASDN in vivo is still lacking.

The rapid effects of vasopressin on ENaC need to be distinguished from the more chronic long-term effects of the hormone that involve transcriptional effects on ENaC and ENaC regulatory proteins. Long-term treatment with vasopressin or its synthetic analogue 1-desamino-8-D-arginine vasopressin (DDAVP) markedly increases the expression of β - and γ ENaC sub-units in a rat cortical CCD cell line [79] and in rat kidneys [86, 236]. This effect was accompanied by a significant increase of Na^+ transport in the cultured CCD cells [79] as well as in the isolated perfused collecting ducts [79]. However, under this long-term stimulation, the induced Na^+ transport activity was probably not related to an enhanced trafficking of channel molecules to the cell surface. Immunohistochemistry revealed that the induction of β - and γ ENaC led to an intracellular accumulation of the channel subunits in CNT and CD of the DDAVP-treated rats, but did not go along with any detectable change in the cell surface abundance of α -, β - or γ ENaC [292].

Using serial analysis of gene expression, Firsov and colleagues aimed at identifying mRNAs that are rapidly up- or downregulated by vasopressin and could mediate transcriptional effects on ENaC activity. In mpkCCD collecting duct cells, treated for 4 h with vasopressin, 48 genes were induced whilst 11 genes were repressed [277]. Subsequent functional analysis indicated that two of the upregulated transcripts (vasopressin-induced transcript 32 and the regulator of G protein signalling 2) are actually involved in negative feedback regulation of V2 receptor signalling that possibly limits ENaC activation under chronic vasopressin stimulation [237, 371]. Another induced transcript, the ubiquitin-specific protease 10 (Usp10), was recently shown to increase the cell surface expression of ENaC, when co-expressed with the channel in HEK-293 cells [41] (see below).

Regulation of ENaC by insulin/IGF-1

Insulin stimulates renal Na^+ retention and K^+ excretion in man and in laboratory animals [71]. A large proportion of the response can be reversed by the ENaC blocker benzamil

[314, 325]. Insulin and insulin-like growth factor-1 receptors (both can bind insulin and insulin-like growth factor I (IGF-1), though with different affinities) have been demonstrated along the mammalian renal tubular system including the cortical collecting system [71, 124] indicating that both hormones may regulate ENaC in renal epithelia. In fact, in amphibian model systems (i.e. toad urinary bladder, *Xenopus laevis* A6 cells), insulin and IGF-1 profoundly activate amiloride-sensitive Na^+ transport by activation of basolateral and/or luminal receptors [32–34, 216, 307, 369]. Both hormones do also activate ENaC in mammalian CCD cell lines [116, 317], but the responsiveness of the mammalian CCD cells appear to be higher for IGF-1 than for insulin [116].

Experiments in *Xenopus laevis* A6 cells, mouse CCD cells and isolated collecting ducts indicated that insulin and/or IGF-1 stimulate ENaC activity by increasing the cell surface density of ENaC [18, 34, 35] and/or by increasing the open probability of Na^+ channels already present in the apical plasma membrane [213, 317]. Part of these effects might be related to direct phosphorylation of channel subunits [307, 369]. Although insulin and IGF-1 signalling has been studied in various target tissues [85, 88], only little is known about the insulin-signalling pathway in the ASDN *in vivo*. Data from *in vitro* assays, amphibian and mammalian renal cell-lines indicated that insulin and IGF-1 stimulate Na^+ transport via a signalling cascade that involves sequential phosphorylation and activation of phosphoinositide 3-kinase (PI3K), 3-phosphoinositide-dependent protein kinase (PDK1) and finally, Sgk1 [182, 187, 201, 249]. IGF-1 was also reported to stimulate Sgk1 expression at the mRNA and protein level [116]. This suggests Sgk1 as a central point of convergence for both the aldosterone (induction of Sgk1) and the insulin/IGF-1 (induction and activation of Sgk1) signalling pathways [182, 187, 201, 249]. Support for this hypothesis comes from experiments in A6 cells in which pharmacological inhibition of PI3K blunts hormone-induced Sgk1 phosphorylation and insulin- as well as aldosterone-stimulated Na^+ transport [348]. The rather mild renal salt wasting phenotype of Sgk1 deficient-mice [358], however, points to a certain degree of redundancy in the Sgk1-dependent signalling pathway. In this context, the putative roles of closely related PKB/Akt kinases warrant further attention [201]. These insulin-dependent kinases phosphorylate similar phosphorylation sites as Sgk1 [172]. Recent data in Fisher rat thyroid cells with heterologous expression of ENaC indicated that PKB isoforms could also mediate the effects of insulin on ENaC [186]. However, data from the *Xenopus laevis* oocyte expression system and *Xenopus laevis* kidney A6 cells did not support this concept [11]. Perhaps, cell type specific differences may explain the discrepant results. Therefore, additional experiments in mammalian renal epithelia are needed to further address this issue.

Regulation of ENaC by insulin and IGF-1 may have important clinical relevance. For example, it has been proposed that the chronic hyperinsulinaemia in type-2 diabetes inappropriately stimulates ENaC-dependent renal Na^+ re-absorption and hence may contribute to the frequent association of diabetes and hypertension in metabolic syndrome [18]. Consistent with this hypothesis, enhanced renal expression of Sgk1 and other ENaC-activating kinases have been found in kidneys of diabetic mice [178] and humans [181]. Moreover, Sgk1-deficient mice appear to be protected from the development of salt-sensitive hypertension in two models of hyperinsulinaemia [138, 139]. However, the potential role of hyperinsulinaemic activation of ENaC should not be over-estimated. Although changes in ENaC protein expression have been reported in kidneys of diabetic rodents [28, 29, 87, 205, 272–275], the functional significance of these findings is uncertain and a direct demonstration of insulin-induced ENaC hyperactivity in CNT and CD of diabetic kidneys is lacking so far. In fact, the observation that chronic hyperinsulinaemia in patients with insulinoma is not associated with a detectable elevation of blood pressure [293, 339] argues against a direct role of hyperinsulinaemia in hypertension. The observation that the insulin receptor is actually down-regulated in kidneys of hyperinsulinaemic rats [324] and that kidney-specific deletion of the insulin receptor increases renal Na^+ retention and blood pressure [326] stress that the pathogenesis of arterial hypertension in type-2 diabetes is complex.

IGF-1 has also been linked to renal Na^+ retention. IGF-1 production is under strict control of growth hormone (GH). GH infusion to healthy humans increases renal IGF-1 production and stimulates renal Na^+ and fluid transport [125, 133, 222] which has been used to explain that patients with acromegaly (GH over-production) frequently develop arterial hypertension [36]. Recently, Kamenicky and co-workers studied acromegalic GC rats to analyse the molecular mechanism responsible for renal Na^+ retention in these rats. Despite suppressed plasma aldosterone levels, the GC rats revealed an increased amiloride-sensitive natriuresis, an enhanced Na-K-ATPase activity in collecting ducts and an altered proteolytic cleavage of ENaC subunits, suggesting that enhanced ENaC-mediated Na^+ transport in the ASDN contributes to the pathogenesis of Na^+ retention in acromegaly [158]. Interestingly, genetic analysis suggested also a strong linkage between the IGF-1 gene locus and systolic blood pressure [231]. The observation that patients with nephrotic syndrome do also have excessive amounts of IGF-1 in their urine led to the speculation that urinary IGF-1 may activate ENaC-dependent Na^+ transport in the kidney and hence explain the Na^+ and fluid retention in the disease [350]. In fact, increased Na^+ re-absorption in the renal collecting system is

a hallmark of nephrotic syndrome [72, 165, 166] and appears to be initiated independent of increased plasma aldosterone [69, 201].

Regulation of ENaC by proteases

Recent evidence indicates that proteolytic processing of ENaC along its biosynthetic pathway and at the cell surface is an important mechanism that contributes to ENaC activation in a complex manner. Several excellent reviews exist on this rapidly expanding field of research [169, 254, 281, 283]. Within the scope of the present review, we can only highlight some aspects of this interesting feature of ENaC regulation.

The observation that the protease inhibitor aprotinin induced a decrease in short-circuit current in the toad bladder [243] was probably the first indication for an activating effect of proteases on ENaC. Subsequently, CAPs have been identified using the *Xenopus laevis* oocyte expression system and were shown to activate ENaC when co-expressed with the channel [331, 332, 344]. Electrophysiological studies in the *Xenopus laevis* oocyte expression system clearly demonstrated a large and rapid stimulatory effect of extracellularly applied trypsin and chymotrypsin on ENaC activity [59]. Membrane-bound and/or secreted proteases such as CAPs are likely to exist in ENaC expressing epithelia and are thought to act on the extra-cellular domain of the channel. One possible candidate for an endogenous ENaC-activating protease is prostaticin, the mammalian homologue of *Xenopus* CAP1 [343]. Prostaticin is an attractive candidate since it is expressed in the kidney and in cultured collecting duct cells [2, 241] and its expression seems to be regulated by aldosterone [233], the main hormonal regulator of ENaC. However, prostaticin has a pH optimum of about 9 and is practically inactive at physiological urine pH [365]. Moreover, although the serine protease inhibitor aprotinin abolishes prostaticin-induced activation of ENaC [2], mutations within the catalytic triad of prostaticin (mCAP1) do not prevent its stimulatory effect on ENaC currents in co-expression experiments [9, 43]. In contrast, mutating the catalytic triad of the related proteases mCAP2 and mCAP3 abolishes their stimulatory effect on ENaC [9]. These findings suggest that prostaticin may act indirectly by altering the activity of downstream proteases. Thus, more than one protease is probably involved in ENaC regulation. Another candidate is tissue kallikrein which recently has been reported to be involved in ENaC processing in the kidney [252]. Tissue kallikrein is synthesised in large amounts in the CNT [17, 98, 262] and released into the urine [190, 212] from where it could act on ENaC either directly or indirectly by activating other proteases [252].

Remarkably, kallikrein synthesis in the CNT and its subsequent release into the urine are stimulated by aldosterone [211], dietary Na⁺ restriction [242, 300] and in particular dietary K⁺ loading [122, 341] indicating that kallikrein could be involved in ENaC regulation under these conditions. Interestingly, kallikrein failed to activate ENaC heterologously expressed in *Xenopus laevis* oocytes [59]. Moreover, renal ENaC cleavage is preserved in kallikrein-deficient mice, and these animals do not develop a salt-losing phenotype even when stressed by dietary Na⁺ restriction [252]. However, these findings do not rule out a functional role of kallikrein in ENaC regulation, but support the concept that ENaC activation by proteases is a highly redundant process. Indeed, in analogy to known kinase/phosphatase networks, the channel-activating proteases may be part of a complex and highly regulated protease cascade with tissue-specific properties [281, 283]. The recent discovery of endogenous CAP inhibitors adds to the complexity of this regulatory pathway [346].

ENaC function appears to be regulated also by intracellular proteases. Proteolytic cleavage by furin [323] or other Golgi-associated convertases are thought to be important for ENaC maturation in the biosynthetic pathway before the channel reaches the plasma membrane [128]. Western blot analysis of a range of ENaC expressing cells and tissues has revealed the presence of distinct ENaC cleavage products in particular of the α - and γ -subunit [283]. The channel is thought to be in its mature and active form in its cleaved state, but there is evidence for the presence of both cleaved and non-cleaved channels in the plasma membrane [141].

At present, the precise molecular mechanism of proteolytic channel activation remains unclear. Cleavage occurs at specific sites within the extra-cellular loops of the α - and γ -subunits but not the β -subunit [3, 75, 142, 254, 283]. Cleavage at these sites probably results in the release of inhibitory peptides from the extra-cellular loops of α - and γ ENaC [43, 53, 55]. Cleavage sites for furin [140], prostaticin [43], plasmin [248] and elastase [3] have been identified and were studied in heterologous expression systems. Mutational analysis indicated that similar stimulatory effects can be achieved by cleaving the channel at different but closely adjacent sites within a functionally important region. In particular, cleavage of the γ -subunit appears to play a pivotal role in proteolytic ENaC activation [3, 54, 75, 127]. At least two functionally distinct ENaC populations are present in the plasma membrane: active channels with a somewhat variable but rather high open probability (P_O) of about 0.5 [114] and near-silent channels with an exceedingly low P_O of less than 0.05 [99, 162, 280]. Proteolytic cleavage may cause a conformational change of the channel favouring its open state. In fact, extracellularly applied trypsin appears to have a dual

function on ENaC open probability. It activates near-silent channels [48, 49, 75] and stimulates the gating of channels that are already active in the membrane [75]. Relieving Na⁺ self-inhibition may also add to the stimulatory effect of proteases on ENaC [31, 60, 301]. In addition, indirect mechanisms involving the downstream activation of G-proteins have been reported to contribute to ENaC activation by trypsin [19].

Most of our knowledge about ENaC activation by extracellular proteases stems from studies in model system like *Xenopus laevis* oocytes and cultured cells including renal epithelial cell lines. Nevertheless, the consistent observation of low molecular weight forms of γ ENaC and α ENaC in the kidneys of rodents with elevated plasma aldosterone levels (e.g. [89, 104, 170, 214] indicated that proteolytic cleavage of ENaC occurs in native tissue. Importantly, the appearance of cleaved products correlated with increasing ENaC currents [89, 107]. Moreover, functional evidence for ENaC activation by extracellular proteases in renal tubules is emerging. In trypsin-treated isolated perfused rabbit, CCDs net Na⁺ absorption significantly exceeded that measured in control tubules by about 70% [224]. Moreover, application of kallikrein elicits an amiloride-sensitive increase in the intracellular Na⁺ concentration in principal cells of isolated and micro-perfused mouse CCDs [252]. Finally, whole-cell patch clamp recordings demonstrated that application of trypsin can stimulate the amiloride-sensitive current in principal cells of micro-dissected split open rat [107] and mouse [235] distal tubules. Collectively, these studies provide proof of principle that extra-cellular serine proteases can stimulate ENaC activity in native renal tissue. Functionally, the process of ENaC activation by extracellular proteases may provide a mechanism for the fast adaptation of ENaC function to altered functional requirements. Thus, a rapid activation of the so-called near-silent channels [49] already present in the luminal membrane may precede other regulatory mechanism like the biosynthesis and insertion of additional pre-existing or newly synthesised channels in the apical plasma membrane. The predominant apical localisation of ENaC in the (early) CNT makes the CNT particularly susceptible for this type of regulation.

In addition to their physiological function, proteases may also be involved in the pathogenesis of renal Na⁺ retention in renal diseases. Patients with crescentic glomerulonephritis have significantly higher urinary concentrations of neutrophil elastase, than healthy controls [240]. Likewise, plasminogen appears in the urine of patients with nephrotic syndrome [182, 333]. After conversion to plasmin by tubular urokinase-type plasminogen activator [253], the generated plasmin may contribute to ENaC activation [248, 320]. Indeed, the urine from puromycin aminonucleoside (PAN)-nephrotic rats has recently been shown to contain plasmin and to activate ENaC [320]. In contrast, urine from

control rats or heat-inactivated urine from PAN-nephrotic rats had no stimulatory effect [320]. Whether the increased proteolytic cleavage of ENaC contributes to renal Na⁺ retention in nephrotic syndrome warrants future analysis. The concentration of proteases may also be increased in the urine of diabetic patients [321] which is supported by a recent report that plasmin is increased in the urine of obese, diabetic and hypertensive ZSF1 rats [248]. Thus, it is tempting to speculate that an inappropriate ENaC activation by elevated levels of urinary proteases may contribute to arterial hypertension associated with diabetes mellitus and metabolic syndrome. Moreover, renal disease may not only affect the activity of proteases but may also shift the balance between endogenous proteases and protease inhibitors. In this context, it is of interest that serpinh1, a serine protease inhibitor, has recently been identified in an integrated genomic–transcriptomic approach as a hypertension-related gene [362]. Thus, the pathophysiological aspects of proteolytic ENaC regulation await further investigation and the identification of relevant proteases and protease inhibitors along the nephron and in urine samples in various disease states. In the future, specific protease inhibitors may become valuable therapeutic tools to prevent excessive ENaC activation under certain pathophysiological conditions. Moreover, the relative importance of intra- versus extracellular proteolytic processing of ENaC remains to be determined and may vary in different tissues and nephron segments under different (patho-) physiological conditions.

Regulation of ENaC by kinases

ENaC phosphorylation by kinases has long been thought to contribute to ENaC regulation [114]. In cultured renal epithelial cells, aldosterone and insulin have been shown to increase the phosphorylation of the COOH terminal ends of the α -, β - and γ -subunits of ENaC [307, 369]. Moreover, the COOH termini of ENaC subunits were found to be phosphorylated by cytosolic fractions derived from rat colon [58]. This phosphorylation is thought to involve at least three different types of kinases, including the ERK and the casein kinase 2 (CK-2) [303, 304].

Since these initial observations, several kinases have been identified to control ENaC function either by direct phosphorylation of ENaC subunits or by phosphorylation of proteins interacting and regulating ENaC. Perhaps the best studied kinase in this context is the aldosterone-induced kinase Sgk1 (see above) which stimulates cell surface activity and density of ENaC via phosphorylation of α ENaC (increasing Po) [74] and Nedd4–2 (increasing N) [187, 201, 249], respectively. Moreover, Sgk1 may stimulate ENaC function via direct inhibition of the Dot1a–Af9

repressor complex that controls the transcription of α ENaC and possibly other aldosterone-induced genes [368]. The *in vivo* significance of Sgk1 for ENaC regulation has been confirmed in several studies on two different Sgk1-deficient mouse models which both exhibit a salt-losing phenotype [95, 358]. However, only one of the studies attributed the salt losing phenotype to a reduced ENaC activity in the CCD [358], whilst the other study did not find any effect on the overall channel activity although the proteolytic cleavage of γ ENaC was diminished [95]. In addition to Sgk1, two Sgk1 paralogues (Sgk2 and Sgk3) have been identified [172]. These kinases have the same consensus motif (RXRXX(S/T)) for phosphorylation as Sgk1 [172] and both profoundly stimulate amiloride-sensitive Na^+ currents when co-expressed with ENaC in heterologous expression systems [103]. However, Sgk2 and Sgk3 are not regulated by corticosteroids [172] and Sgk3-deficient mice do not have renal salt wasting indicating that at least Sgk3 is not involved in ENaC regulation in the kidney [119, 218].

Other kinases thought to interfere with the Nedd4–2/ENaC pathway via direct phosphorylation of ENaC sub-units are ERK [303], CK-2 [304] and the G-protein-coupled receptor kinase GRK2 [78]. Phosphorylation of the COOH-termini of β - and γ ENaC by ERK and CK-2 appears to reduce ENaC cell surface density and activity by increasing the affinity of Nedd4–2 to ENaC [303, 304]. Notably, the activation of ERK can be blocked by the glucocorticoid-induced leucine zipper protein (GILZ) [26, 315, 316]. GILZ is rapidly induced by aldosterone in CCD cells *in vitro* [277] suggesting that aldosterone may regulate the Nedd4–2/ENaC interaction at two different levels: (a) by phosphorylation of Nedd4–2 (via Sgk1) and (b) by inhibition of ERK-dependent ENaC phosphorylation and subsequent Nedd4–2 binding (via GILZ). In contrast to the action of ERK and CK-2, the phosphorylation of the COOH-terminal tail of β ENaC by GRK2 appears to enhance the channel activity by disruption of the Nedd4–2/ENaC interaction [78]. The observed stimulatory action of GRK2 on ENaC was proposed to explain the reported association of GRK2 over-activity with hypertension [78]. The cAMP-activated PKA is another kinase that may directly phosphorylate ENaC [307]. Although definitive proof for this has not yet emerged, Yang and co-workers recently showed that two putative ERK consensus motifs in the C termini of rat β - and γ ENaC are critically involved in the regulatory pathway, by which cAMP activates the channel [364]. PKA was also suggested to increase both the phosphorylation of Sgk1 [250] and Nedd4–2 [312] further supporting the idea that the aldosterone and vasopressin signalling pathway converge in ENaC regulation. Moreover, vasopressin and cAMP may affect ENaC via the recently identified exchange protein directly activated by cAMP (Epac) pathway [38]. Epac1 and Epac2 are highly abundant in the ASDN [191].

Several other kinases have been suggested to regulate ENaC function independent from direct ENaC phosphorylation. One of these kinases is the with-no-lysine (K)-kinase WNK1. WNK1 is highly expressed in the kidney and is implicated in the pathogenesis of Gordon's syndrome, a severe form of arterial hypertension with hyperkalemia, which is thought to be related to a hyperactivity of the thiazide-sensitive NCC in the DCT [152]. Recent studies suggested that WNK1 may also activate Sgk1 by a phosphatidylinositol 3-kinase-dependent non-catalytic mechanism, which finally increases ENaC activity and possibly contributes to the hypertensive phenotype [359, 360]. In addition, I κ B kinase- β [185], the phosphatidylinositol 3-kinase [317] and protein kinase C δ [219] were recently shown to activate ENaC. However, kinases may not only increase but also inhibit ENaC function. Recent evidence suggests that the metabolic sensor AMP-activated kinase may limit ENaC activity under metabolic stress when the intra-cellular ATP/AMP ratio is shifted to AMP [25, 52, 357] and may prevent cellular Na^+ loading when ATP supply to the Na-K-ATPase is limited. Pharmacological 5'AMP-activated protein kinase (AMPK) activation or over-expression of an activating AMPK mutant in a mouse collecting duct cell line inhibited amiloride-sensitive short circuit currents [52]. Additional experiments in heterologous expression systems indicated that the AMPK activation promotes Nedd4–2-dependent ENaC retrieval from the plasma membrane by mechanisms that are independent from Sgk1, PKA or ERK activation and may be caused by ENaC phosphorylation [25].

Thus, a variety of kinases involved in regulation of ENaC have been identified mainly in *in vitro* systems. The significance of these kinases for regulation of the channel in the kidney *in vivo* warrants further investigation and it remains to be established whether axial heterogeneity of their expression and activity may contribute to a differential regulation of ENaC along the nephron. To understand this, it will be important to determine the kinases and phosphatases involved in ENaC regulation in the different nephron segments. It would not be surprising to find CNT specific mechanisms for ENaC regulation by phosphorylation and dephosphorylation processes which may explain the different regulation of ENaC activity in this nephron segment compared to the collecting duct.

Regulation of ENaC function and trafficking by associated proteins

It is an emerging paradigm that membrane transport proteins do not function in isolation but interact with associated regulatory proteins which modulate channel function and trafficking (Fig. 4). Sphingolipid- and

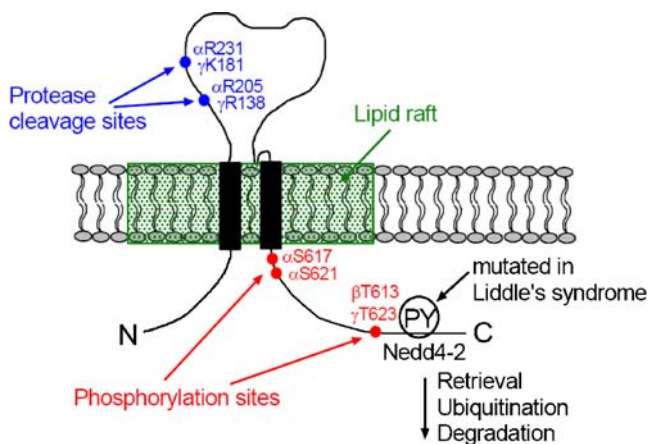


Fig. 4 Molecular mechanisms of ENaC regulation. For simplicity, only one channel subunit is shown. Putative phosphorylation and proteolytic cleavage sites in the three channel subunits ($\alpha\beta\gamma$) are indicated with amino acid positions corresponding to the rat sequence. Proteolytic processing occurs at two putative furin cleavage sites in α ENaC and at one furin site and one prostaticin site (γ K181) in γ ENaC. In the γ -subunit of human and mouse ENaC, additional elastase and plasmin cleavage sites have recently been identified and are localised distal to the prostaticin cleavage site (not shown). Proteolytic cleavage is thought to result in the release of inhibitory peptide domains. The C-terminal PY motif (PPXY) is mutated in patients with Liddle's syndrome, a severe form of salt-sensitive arterial hypertension. The mutation prevents the binding of Nedd4-2 to the PY motif and subsequent channel ubiquitylation, retrieval and proteasomal degradation. Channel phosphorylation at positions β T613 and γ T623 is thought to reduce the ability of the channel to interact with Nedd4-2 thereby reducing Nedd4-2-mediated channel retrieval. The phosphorylation site α S621 has been shown to be critical for rapid ENaC activation by recombinant SGK1 in outside-out patches. The differential role of the various phosphorylation sites remains to be determined. Additional regulatory proteins are likely to be associated with ENaC and may be co-assembled in so called lipid rafts. However, the association of ENaC with lipid rafts is still a matter of debate

cholesterol-rich micro-domains, so called lipid rafts [309], may serve as assembly platforms to facilitate the trafficking of ENaC and its functional association with regulatory proteins, e.g. with Nedd4 (see below) which may also be localised in lipid rafts [255]. Indeed, there is some evidence that in A6 renal epithelial cells ENaC is present in lipid rafts [131, 132] and that ENaC function is modified by its lipid environment [13, 349] and by removing cholesterol from the plasma membrane [15, 354]. However, at present, the localisation of ENaC within lipid rafts and the role of the lipid environment for ENaC function and regulation are still a matter of debate [126]. In this context, it is interesting to note that phosphatidylinositides have been reported to play an important role in the regulation of ENaC (for recent review, see [260]). Both phosphatidylinositol 4,5-bisphosphate (PIP₂) and phosphatidylinositol 3,4,5-trisphosphate (PIP₃) are thought to be permissive for ENaC activity, and increased levels of PIP₂ or PIP₃ in the membrane are associated with an increase in ENaC activity [180, 256,

258, 329, 366]. Recently, it has been reported that resting levels of PIP₂ and PIP₃ in the apical membrane of collecting duct cells affect basal ENaC activity [261, 317]. Thus, a wide range of signalling pathways influencing PIP₂ or PIP₃ levels may contribute to ENaC regulation. Attempts to identify putative PIP₂ and PIP₃ binding sites within the β - and γ -subunit of ENaC have yielded interesting but controversial results [180, 256, 258]. Moreover, it is not yet clear whether PIP₂ and PIP₃ enhance the open probability of ENaC by directly binding to the channel or by binding to closely associated proteins [260].

There is good evidence that in the kidney, *in vivo* long-term regulation of ENaC activity is mainly achieved by changes in the cell surface abundance of the channel [47, 280, 313]. The number of ENaC channels in the luminal membrane is the net result of synthesis and exocytotic delivery to the cell surface and of the endocytotic retrieval of channels from the luminal membrane. Endocytosed proteins either recycle back via recycling endosomes or will become degraded via lysosomal or proteasomal pathways. The cellular and molecular mechanisms that control these key steps of ENaC trafficking begin to be elucidated. One of the best studied ENaC regulatory proteins is the ubiquitin-protein ligase Nedd4-2. The C-termini of all three ENaC subunits ($\alpha\beta\gamma$) contain a proline-rich PPXY (PY) motif, which is believed to be important for the interaction with Nedd4-2, promoting the ubiquitylation, endocytosis and proteasomal degradation of the channel [318]. Studies in *Xenopus laevis* oocytes and polarised MDCK renal epithelial cells have demonstrated that Liddle's syndrome mutations and/or deletions of the PY motif in β - or γ ENaC reduce the endocytic retrieval of ENaC from the membrane [1, 118, 204] probably by interfering with Nedd4-2-dependent ubiquitylation and subsequent clathrin-dependent endocytosis [204]. This results in an increase in the number of ENaC channels in the membrane. In addition, Liddle's syndrome mutations have been shown to increase channel open probability [7, 99], to enhance proteolytic channel cleavage [171] and to reduce Na⁺ feedback inhibition of ENaC expressed in *Xenopus laevis* oocytes [161]. Thus, the functional consequences of an altered interaction between Nedd4-2 and ENaC in Liddle's syndrome are not limited to an inhibition of Nedd4-2-mediated channel retrieval from the apical plasma membrane. This indicates that this interaction is highly relevant for many aspects of ENaC regulation. Therefore, it is not surprising that other regulatory mechanisms affect ENaC activity by modifying the ability of Nedd4-2 to functionally interact with ENaC. As described above, phosphorylation of Nedd4-2 by Sgk1 [70, 311] or PKA [25, 312] blocks its ability to ubiquitylate ENaC and increases apical membrane channel density by reducing its endocytosis. Members of 14-3-3 protein family are thought to participate in this regulatory process through

direct interaction with the phosphorylated form of Nedd4–2. By maintaining Nedd4–2 in an inactive phosphorylated state, 14-3-3 proteins appear to modulate the cell-surface density of ENaC cooperatively with Sgk1 kinase [24, 144, 229]. Aldosterone selectively increases the expression of particular 14-3-3 isoforms [192], and association of these isoforms as heterodimers with phospho-Nedd4–2 appears to be required for Na⁺ transport stimulation [192]. N4WBP5A is another potential ENaC regulatory protein that stimulates ENaC currents and surface expression probably by binding to the WW domains of Nedd4–2 thereby preventing their interaction with the PY motifs of ENaC [175]. Deubiquitylating enzymes (DUBs) represent an additional regulatory mechanism to counteract Nedd4–2-mediated ENaC inhibition [338]. Indeed, it has been shown that an aldosterone induced ubiquitin-specific protease, Usp2-45, deubiquitylates ENaC and stimulates ENaC-mediated Na⁺ transport in cultured mpkCCD cells and in *Xenopus laevis* oocytes [91]. A recent report demonstrated that Usp2-45 deubiquitylation of ENaC not only prevents ENaC retrieval from the plasma membrane but also promotes proteolytic channel activation [289]. Interestingly, a vasopressin-inducible ubiquitin-specific protease 10 was reported to increase ENaC cell surface expression not by deubiquitylation of ENaC but by deubiquitylating and stabilising sorting nexin 3, a protein thought to promote ENaC trafficking to the plasma membrane [41]. Recently, Butterworth and co-workers used a chemical probe approach to identify deubiquitylating enzymes active in the cortical collecting duct cell line mpkCCD [46]. One of the isolated DUBs was identified as the ubiquitin C-terminal hydrolase (UCH) isoform L3 (UCH-L3) that turned out to be a predominant DUB in endosomal compartments of the CCD cells. Pharmacological inhibition and siRNA-mediated knockdown of UCH-L3 increased ENaC ubiquitylation and reduced the activity and cell surface density of the channel at the plasma membrane [46]. Whether UCH-L3 is constitutively active or whether its function is regulated remains to be elucidated. That ubiquitylation of ENaC is relevant for its function *in vivo* was evidenced by the recent development of a Nedd4–2-deficient mouse model. Consistent with the proposed role of Nedd4–2, Nedd4–2-deficient mice show a salt-sensitive arterial hypertension that can be effectively treated with amiloride [305]. Likewise, genetic analysis provided some evidence that Nedd4–2 variants and polymorphisms are associated with salt sensitivity of blood pressure variations in humans [10, 66, 93]. Moreover, one naturally occurring human Nedd4–2 polymorphism was characterised in the oocyte expression system and found to have reduced ENaC inhibitory effects probably due to enhanced phosphorylation [102].

The Nedd4–2/ubiquitylation pathway is an important but not the only mechanism by which ENaC activity is

regulated. That other mechanisms interfere with the regulation of ENaC is already indicated by the observation that the hormonal stimulation of ENaC remains preserved when the interaction between ENaC and Nedd4–2 is compromised. In mpkCCD cells, channels with mutated PY motifs in both β - and γ ENaC subunits still respond to aldosterone and vasopressin [12]. Likewise, in a transgenic mouse model with Liddle's syndrome, the responsiveness of ENaC to aldosterone is not only preserved but even enhanced in the renal collecting duct [67] and in the colon [22]. These latter findings are consistent with the early observation that the mineralocorticoid response was fully conserved in one of the patients with hereditary pseudohypoaldosteronism originally described by Dr. Liddle [193]. In the last few years, several other ENaC-associated proteins regulating the function of the channel have been described [117, 284, 286]. Data derived from heterologous expression systems suggest that the aldosterone-induced protein NDRG2 [355], the GILZ [26, 315, 316], K-Ras2 [215], the SNARE protein syntaxin 1a [61, 132, 263, 295], the SNARE-binding protein complexin [45] and the heat shock-induced proteins Hsc70 and Hsp70 [115, 340] contribute to the control of ENaC trafficking and activity. Experiments on the colonic epithelial HT-29 cell line indicated that the Ras-related Rab GTPases interfere with ENaC trafficking as well. Immunoprecipitations showed that ENaC interacts with Rab3 and Rab27a [294]. Over-expression of these Rabs reduced ENaC activity by reducing the cell surface expression of the channel [294]. Introduction of isoform-specific small inhibitory RNA reversed the inhibitory effect of the over-expressed Rab proteins [294, 296, 297]. Moreover, recent experiments in CHO cells transfected with ENaC and Rab proteins indicated that Rab11a co-localises with ENaC at intracellular sites and participates to the exchange of ENaC subunits from an intracellular storage pool to the plasma membrane [159]. However, the precise regulatory mechanism and physiological role of these proteins in the context of ENaC regulation remain to be established (Fig. 4).

There are numerous reports about a functional interaction of ENaC and the cystic fibrosis transmembrane conductance regulator (CFTR) chloride channel [21, 179]. In the lungs of cystic fibrosis (CF) patients, the failure of defective CFTR to inhibit ENaC is thought to cause hyperabsorption of Na⁺ and fluid possibly contributing to the formation of dry sticky mucus, a hallmark of pulmonary CF pathophysiology [40, 80]. The finding that airway-specific over-expression of ENaC produces cystic fibrosis-like lung disease in mice [209] and that the symptoms can be prevented by amiloride therapy [370] supports the concept that increased ENaC activity may contribute to CF pathophysiology. Recombinant expression studies [179, 319] have shown ENaC to be inhibited by cAMP-dependent activation of CFTR, and

similar observations have been made in various epithelial tissues including mouse renal CCD cells [189]. In the ASDN, CFTR-mediated release of ATP [290] may lead to paracrine inhibition of ENaC via the stimulation of purinergic receptors [65, 188, 259]. The recent finding that mice lacking P2Y2 receptors have salt-sensitive hypertension suggests that tonic purinergic inhibition of renal ENaC may be physiologically relevant [276]. However, the molecular mechanism and physiological relevance of a regulatory relationship between ENaC and CFTR remain a subject of considerable controversy and may vary in different tissues [173, 176, 179, 230, 266]. The complexity of the ENaC–CFTR relationship is further demonstrated by studies that suggest that ENaC may have a stimulatory effect on CFTR activity [56, 147, 151] possibly by stabilising ENaC at the apical cell surface [203]. Furthermore, in *Xenopus laevis* oocytes, ENaC upregulates the renal potassium channel Kir1.1 (ROMK) in a CFTR-dependent manner [174]. CFTR is abundantly expressed in the kidney [64] and renal collecting duct cells [73, 189, 327]. Nevertheless, findings from cultured cells and heterologous expression systems have to be interpreted with caution and need to be confirmed in native renal tissue. In salt-restricted mice [163], the natriuresis induced by amiloride was shown to be significantly greater in CF mice than in wild-type controls, consistent with an increased renal ENaC activity in CF animals. However, renal abnormalities reported in CF patients are subtle [356] and a physiological role of CFTR in renal ENaC regulation remains to be demonstrated.

Conclusion and perspectives

As outlined in this review, the CNT is a major site for the fine tuning of renal Na^+ excretion and hence for the maintenance of Na^+ balance and the long-term control of arterial blood pressure. The rate-limiting step for Na^+ absorption in the CNT is ENaC. The importance of the CNT for ENaC-mediated Na^+ absorption has previously been under-estimated possibly because the CNT is relatively short and poorly accessible for *in vitro* studies. Indeed, most of the studies on ENaC and its regulation in native renal tissue have been performed in the collecting duct rather than in the CNT. However, the CNTs collectively comprise approximately 8% of tubular mass in the renal cortex and account for up to 10% of the overall renal Na^+ absorption. The physiological relevance of ENaC-mediated Na^+ transport in the CNT is evidenced by the observation that the collecting duct-specific deletion of αENaC in mice is fully compensated by the residual activity of ENaC in the CNT (and in the DCT2). ENaC activity has an axial gradient along the nephron with the highest activity in the CNT and with a gradual decline along the collecting duct. Indeed, in animals maintained on a standard diet, the only

nephron segment with constitutive ENaC activity is probably the CNT and in some species the DCT2. Thus, under normal physiological conditions, the CNT is likely to be the primary site of aldosterone-mediated regulation of ENaC activity to respond to small changes in dietary Na^+ intake with corresponding changes in renal Na^+ excretion. Hence, the CNT probably is the major site of action for diuretics such as amiloride or aldosterone antagonists. So far, little is known about the mechanisms that establish the gradient of ENaC expression along the nephron and that specifically regulate ENaC activity in the CNT. However, it may well be relevant to understand these mechanisms since they may be involved in ENaC dysregulation under pathophysiological conditions and may contribute to states of renal Na^+ retention and the development of arterial hypertension. In this context, it will be an important challenge for future studies to characterise nephron-specific mechanisms of ENaC regulation. The axial gradient of Nedd4–2 expression along the CNT and CD may be one of the reasons for the different cell surface activity of ENaC along the ASDN. Other channel-associated proteins, the subunit composition of the channel, the expression profile of kinases and phosphatases, the lipid environment or the activation of ENaC by nephron specific proteases may contribute to a differential regulation of ENaC along the nephron. A better understanding of these factors may lead to the identification of new therapeutic targets and new perspectives for the diagnosis and treatment of renal Na^+ retention and salt-sensitive arterial hypertension.

Acknowledgements Cited work of the authors' laboratories was supported by grants from the Swiss National Science Foundation (to J. L.), the Cloëtta Foundation (to J.L.), the Novartis Research Foundation (to J.L.), the Wellcome Trust (to C.K.), the Deutsche Forschungsgemeinschaft (SFB 423: Kidney injury: Pathogenesis and regenerative mechanism; to C.K.), the Johannes und Frieda Marohn-Stiftung (to C. K.) and the Interdisciplinary Centre of Clinical Research (IZKF) of the University of Erlangen-Nürnberg (to C.K.).

References

1. Abriel H, Loffing J, Rebhun JF, Pratt JH, Schild L, Horisberger JD, Rotin D, Staub O (1999) Defective regulation of the epithelial Na^+ channel by Nedd4 in Liddle's syndrome. *J Clin Invest* 103:667–673
2. Adachi M, Kitamura K, Miyoshi T, Narikiyo T, Iwashita K, Shiraishi N, Nonoguchi H, Tomita K (2001) Activation of epithelial sodium channels by prostasin in *Xenopus* oocytes. *J Am Soc Nephrol* 12:1114–1121
3. Adebamiro A, Cheng Y, Rao US, Danahay H, Bridges RJ (2007) A segment of γENaC mediates elastase activation of Na^+ transport. *J Gen Physiol* 130:611–629
4. Almeida AJ, Burg MB (1982) Sodium transport in the rabbit connecting tubule. *Am J Physiol* 243:F330–F334

5. Alvarez de la Rosa D, Zhang P, Naray Fejes Toth A, Fejes Toth G, Canessa CM (1999) The serum and glucocorticoid kinase *sgk* increases the abundance of epithelial sodium channels in the plasma membrane of *Xenopus* oocytes. *J Biol Chem* 274:37834–37839
6. Alvarez de la Rosa D, Coric T, Todorovic N, Shao D, Wang T, Canessa CM (2003) Distribution and regulation of expression of serum- and glucocorticoid-induced kinase-1 in the rat kidney. *J Physiol* 551:455–466
7. Anantharam A, Tian Y, Palmer LG (2006) Open probability of the epithelial sodium channel is regulated by intracellular sodium. *J Physiol* 574:333–347
8. Anantharam A, Palmer LG (2007) Determination of epithelial Na⁺ channel subunit stoichiometry from single-channel conductances. *J Gen Physiol* 130:55–70
9. Andreasen D, Vuagniaux G, Fowler-Jaeger N, Hummler E, Rossier BC (2006) Activation of epithelial sodium channels by mouse channel activating proteases (mCAP) expressed in *Xenopus* oocytes requires catalytic activity of mCAP3 and mCAP2 but not mCAP1. *J Am Soc Nephrol* 17:968–976
10. Araki N, Umemura M, Miyagi Y, Yabana M, Miki Y, Tamura K, Uchino K, Aoki R, Goshima Y, Umemura S, Ishigami T (2008) Expression, transcription, and possible antagonistic interaction of the human *Nedd4L* gene variant: implications for essential hypertension. *Hypertension* 51:773–777
11. Arteaga MF, Canessa CM (2005) Functional specificity of *Sgk1* and *Akt1* on ENaC activity. *Am J Physiol Renal Physiol* 289:F90–F96
12. Auberson M, Hoffmann-Pochon N, Vandewalle A, Kellenberger S, Schild L (2003) Epithelial Na⁺ channel mutants causing Liddle's syndrome retain ability to respond to aldosterone and vasopressin. *Am J Physiol Renal Physiol* 285:F459–F471
13. Awayda MS, Shao W, Guo F, Zeidel M, Hill WG (2004) ENaC-membrane interactions: regulation of channel activity by membrane order. *J Gen Physiol* 123:709–727
14. Bachmann S, Bostanjoglo M, Schmitt R, Ellison DH (1999) Sodium transport-related proteins in the mammalian distal nephron—distribution, ontogeny and functional aspects. *Anat Embryol (Berl)* 200:447–468
15. Balut C, Steels P, Radu M, Ameloot M, Driessche WV, Jans D (2006) Membrane cholesterol extraction decreases Na⁺ transport in A6 renal epithelia. *Am J Physiol Cell Physiol* 290:C87–C94
16. Bankir L, Fernandes S, Bardoux P, Bouby N, Bichet DG (2005) Vasopressin-V2 receptor stimulation reduces sodium excretion in healthy humans. *J Am Soc Nephrol* 16:1920–1928
17. Barajas L, Powers K, Carretero O, Scicli AG, Inagami T (1986) Immunocytochemical localization of renin and kallikrein in the rat renal cortex. *Kidney Int* 29:965–970
18. Baxendale-Cox LM, Duncan RL (1999) Insulin increases sodium (Na⁺) channel density in A6 epithelia: implications for expression of hypertension. *Biol Res Nurs* 1:20–29
19. Bengrine A, Li J, Hamm LL, Awayda MS (2007) Indirect activation of the epithelial Na⁺ channel by trypsin. *J Biol Chem* 282:26884–26896
20. Bens M, Chassin C, Vandewalle A (2006) Regulation of NaCl transport in the renal collecting duct: lessons from cultured cells. *Pflugers Arch* 453:133–146
21. Berdiev BK, Qadri YJ, Benos DJ (2009) Assessment of the CFTR and ENaC association. *Mol Biosyst* 5:123–127
22. Bertog M, Cuffe JE, Pradervand S, Hummler E, Hartner A, Porst M, Hilgers KF, Rossier BC, Korbmayer C (2008) Aldosterone responsiveness of the epithelial sodium channel (ENaC) in colon is increased in a mouse model for Liddle's syndrome. *J Physiol* 586:459–475
23. Beutler KT, Masilamani S, Turban S, Nielsen J, Brooks HL, Ageloff S, Fenton RA, Packer RK, Knepper MA (2003) Long-term regulation of ENaC expression in kidney by angiotensin II. *Hypertension* 41:1143–1150
24. Bhalla V, Daidie D, Li H, Pao AC, LaGrange LP, Wang J, Vandewalle A, Stockand JD, Staub O, Pearce D (2005) Serum- and glucocorticoid-regulated kinase 1 regulates ubiquitin ligase neural precursor cell-expressed, developmentally down-regulated protein 4–2 by inducing interaction with 14-3-3. *Mol Endocrinol* 19:3073–3084
25. Bhalla V, Oyster NM, Fitch AC, Wijngaarden MA, Neumann D, Schlattner U, Pearce D, Hallows KR (2006) AMP-activated kinase inhibits the epithelial Na⁺ channel through functional regulation of the ubiquitin ligase *Nedd4-2*. *J Biol Chem* 281:26159–26169
26. Bhalla V, Soundararajan R, Pao AC, Li H, Pearce D (2006) Disinhibitory pathways for control of sodium transport: regulation of ENaC by *SGK1* and *GILZ*. *Am J Physiol Renal Physiol* 291:F714–F721
27. Bhalla V, Hallows KR (2008) Mechanisms of ENaC regulation and clinical implications. *J Am Soc Nephrol* 19:1845–1854
28. Bickel CA, Verbalis JG, Knepper MA, Ecelbarger CA (2001) Increased renal Na-K-ATPase, NCC, and β -ENaC abundance in obese Zucker rats. *Am J Physiol Renal Physiol* 281:F639–F648
29. Bickel CA, Knepper MA, Verbalis JG, Ecelbarger CA (2002) Dysregulation of renal salt and water transport proteins in diabetic Zucker rats. *Kidney Int* 61:2099–2110
30. Biner HL, Arpin-Bott MP, Loffing J, Wang X, Knepper M, Hebert SC, Kaissling B (2002) Human cortical distal nephron: distribution of electrolyte and water transport pathways. *J Am Soc Nephrol* 13:836–847
31. Bize V, Horisberger JD (2007) Sodium self-inhibition of human epithelial sodium channel: selectivity and affinity of the extracellular sodium sensing site. *Am J Physiol* 293:F1137–F1146
32. Blazer-Yost BL, Cox M, Furlanetto R (1989) Insulin and IGF I receptor-mediated Na⁺ transport in toad urinary bladders. *Am J Physiol* 257:C612–C620
33. Blazer-Yost BL, Liu X, Helman SI (1998) Hormonal regulation of ENaCs: insulin and aldosterone. *Am J Physiol* 274:C1373–C1379
34. Blazer-Yost BL, Esterman MA, Vlahos CJ (2003) Insulin-stimulated trafficking of ENaC in renal cells requires PI 3-kinase activity. *Am J Physiol Cell Physiol* 284:C1645–C1653
35. Blazer-Yost BL, Vahle JC, Byars JM, Bacallao RL (2004) Real-time three-dimensional imaging of lipid signal transduction: apical membrane insertion of epithelial Na⁺ channels. *Am J Physiol Cell Physiol* 287:C1569–C1576
36. Bondanelli M, Ambrosio MR, degli Uberti EC (2001) Pathogenesis and prevalence of hypertension in acromegaly. *Pituitary* 4:239–249
37. Boros S, Bindels RJ, Hoenderop JG (2008) Active Ca²⁺ reabsorption in the connecting tubule. *Pflugers Arch* (in press)
38. Bos JL (2003) Epac: a new cAMP target and new avenues in cAMP research. *Nat Rev Mol Cell Biol* 4:733–738
39. Bostanjoglo M, Reeves WB, Reilly RF, Velazquez H, Robertson N, Litwack G, Morsing P, Dorup J, Bachmann S, Ellison DH (1998) 11 β -hydroxysteroid dehydrogenase, mineralocorticoid receptor, and thiazide-sensitive Na-Cl cotransporter expression by distal tubules. *J Am Soc Nephrol* 9:1347–1358
40. Boucher RC (2007) Airway surface dehydration in cystic fibrosis: pathogenesis and therapy. *Annu Rev Med* 58:157–170
41. Boulkroun S, Ruffieux-Daidie D, Vitagliano JJ, Poirot O, Charles RP, Lagnaz D, Firsov D, Kellenberger S, Staub O (2008) Vasopressin-inducible ubiquitin-specific protease 10 increases ENaC cell surface expression by deubiquitylating and stabilizing sorting nexin 3. *Am J Physiol Renal Physiol* 295:F889–F900
42. Brooks HL, Allred AJ, Beutler KT, Coffman TM, Knepper MA (2002) Targeted proteomic profiling of renal Na⁺ transporter and

- channel abundances in angiotensin II type 1a receptor knockout mice. *Hypertension* 39:470–473
43. Bruns JB, Carattino MD, Sheng S, Maarouf AB, Weisz OA, Pilewski JM, Hughey RP, Kleyman TR (2007) Epithelial Na⁺ channels are fully activated by furin- and prostasin-dependent release of an inhibitory peptide from the gamma-subunit. *J Biol Chem* 282:6153–6160
 44. Butterworth MB, Edinger RS, Johnson JP, Frizzell RA (2005) Acute ENaC stimulation by cAMP in a kidney cell line is mediated by exocytic insertion from a recycling channel pool. *J Gen Physiol* 125:81–101
 45. Butterworth MB, Frizzell RA, Johnson JP, Peters KW, Edinger RS (2005) PKA-dependent ENaC trafficking requires the SNARE-binding protein complexin. *Am J Physiol Renal Physiol* 289:F969–F977
 46. Butterworth MB, Edinger RS, Ovaia H, Burg D, Johnson JP, Frizzell RA (2007) The deubiquitinating enzyme UCH-L3 regulates the apical membrane recycling of the epithelial sodium channel. *J Biol Chem* 282:37885–37893
 47. Butterworth MB, Edinger RS, Frizzell RA, Johnson JP (2009) Regulation of the epithelial sodium channel by membrane trafficking. *Am J Physiol Renal Physiol* 296:F10–F24
 48. Caldwell RA, Boucher RC, Stutts MJ (2004) Serine protease activation of near-silent epithelial Na⁺ channels. *Am J Physiol Cell Physiol* 286:C190–C194
 49. Caldwell RA, Boucher RC, Stutts MJ (2005) Neutrophil elastase activates near-silent epithelial Na⁺-channels and increases airway epithelial Na⁺-transport. *Am J Physiol* 288:L813–L819
 50. Canessa CM, Schild L, Buell G, Thorens B, Gautschi I, Horisberger JD, Rossier BC (1994) Amiloride-sensitive epithelial Na⁺ channel is made of three homologous subunits. *Nature* 367:463–467
 51. Canessa CM (2007) Structural biology: unexpected opening. *Nature* 449:293–294
 52. Carattino MD, Edinger RS, Grieser HJ, Wise R, Neumann D, Schlattner U, Johnson JP, Kleyman TR, Hallows KR (2005) Epithelial sodium channel inhibition by AMP-activated protein kinase in oocytes and polarized renal epithelial cells. *J Biol Chem* 280:17608–17616
 53. Carattino MD, Sheng S, Bruns JB, Pilewski JM, Hughey RP, Kleyman TR (2006) The epithelial Na⁺ channel is inhibited by a peptide derived from proteolytic processing of its alpha subunit. *J Biol Chem* 281:18901–18907
 54. Carattino MD, Hughey RP, Kleyman TR (2008) Proteolytic processing of the epithelial sodium channel γ subunit has a dominant role in channel activation. *J Biol Chem* 283:25290–25295
 55. Carattino MD, Passero CJ, Steren CA, Maarouf AB, Pilewski JM, Myerburg MM, Hughey RP, Kleyman TR (2008) Defining an inhibitory domain in the α -subunit of the epithelial sodium channel. *Am J Physiol Renal Physiol* 294:F47–F52
 56. Chabot H, Vives MF, Dagenais A, Grygorczyk C, Berthiaume Y, Grygorczyk R (1999) Downregulation of epithelial sodium channel (ENaC) by CFTR co-expressed in *Xenopus* oocytes is independent of Cl⁻ conductance. *J Membr Biol* 169:175–188
 57. Chen SY, Bhargava A, Mastroberardino L, Meijer OC, Wang J, Buse P, Firestone GL, Verrey F, Pearce D (1999) Epithelial sodium channel regulated by aldosterone-induced protein sgk. *Proc Natl Acad Sci U S A* 96:2514–2519
 58. Chigaev A, Lu G, Shi H, Asher C, Xu R, Latter H, Seger R, Garty H, Reuveny E (2001) In vitro phosphorylation of COOH termini of the epithelial Na⁺ channel and its effects on channel activity in *Xenopus* oocytes. *Am J Physiol* 280:F1030–F1036
 59. Chraibi A, Vallet V, Firsov D, Hess SK, Horisberger JD (1998) Protease modulation of the activity of the epithelial sodium channel expressed in *Xenopus* oocytes. *J Gen Physiol* 111:127–138
 60. Chraibi A, Horisberger JD (2002) Na self inhibition of human epithelial Na channel: temperature dependence and effect of extracellular proteases. *J Gen Physiol* 120:133–145
 61. Condliffe SB, Carattino MD, Frizzell RA, Zhang H (2003) Syntaxin 1A regulates ENaC via domain-specific interactions. *J Biol Chem* 278:12796–12804
 62. Coscoy S, Lingueglia E, Lazdunski M, Barbry P (1998) The Phe-Met-Arg-Phe-amide-activated sodium channel is a tetramer. *J Biol Chem* 273:8317–8322
 63. Costanzo LS (1984) Comparison of calcium and sodium transport in early and late rat distal tubules: effect of amiloride. *Am J Physiol* 246:F937–F945
 64. Crawford I, Maloney PC, Zeitlin PL, Guggino WB, Hyde SC, Turley H, Gatter KC, Harris A, Higgins CF (1991) Immunocytochemical localization of the cystic fibrosis gene product CFTR. *Proc Natl Acad Sci U S A* 88:9262–9266
 65. Cuffe JE, Bielfeld-Ackermann A, Thomas J, Leipziger J, Korbmacher C (2000) ATP stimulates Cl⁻ secretion and reduces amiloride-sensitive Na⁺ absorption in M-1 mouse cortical collecting duct cells. *J Physiol* 524(Pt 1):77–90
 66. Dahlberg J, Nilsson LO, von Wowerm F, Melander O (2007) Polymorphism in NEDD4L is associated with increased salt sensitivity, reduced levels of P-renin and increased levels of Nt-proANP. *PLoS ONE* 2:e432
 67. Dahlmann A, Pradervand S, Hummler E, Rossier BC, Frindt G, Palmer LG (2003) Mineralocorticoid regulation of epithelial Na⁺ channels is maintained in a mouse model of Liddle's syndrome. *Am J Physiol* 285:F310–F318
 68. Dai LJ, Ritchie G, Kerstan D, Kang HS, Cole DE, Quamme GA (2001) Magnesium transport in the renal distal convoluted tubule. *Physiol Rev* 81:51–84
 69. de Seigneux S, Kim SW, Hemmingsen SC, Frokiaer J, Nielsen S (2006) Increased expression but not targeting of ENaC in adrenalectomized rats with PAN-induced nephrotic syndrome. *Am J Physiol Renal Physiol* 291:F208–F217
 70. Debonneville C, Flores SY, Kamynina E, Plant PJ, Tauxe C, Thomas MA, Münster C, Chraibi A, Pratt JH, Horisberger J-D, Pearce D, Löffing J, Staub O (2001) Phosphorylation of Nedd4–2 by Sgk1 regulates epithelial Na⁺ channel cell surface expression. *EMBO J* 20:7052–7059
 71. DeFronzo RA (1981) The effect of insulin on renal sodium metabolism. A review with clinical implications. *Diabetologia* 21:165–171
 72. Deschenes G, Wittner M, Stefano A, Jounier S, Doucet A (2001) Collecting duct is a site of sodium retention in PAN nephrosis: a rationale for amiloride therapy. *J Am Soc Nephrol* 12:598–601
 73. Devuyst O, Burrow CR, Schwiebert EM, Guggino WB, Wilson PD (1996) Developmental regulation of CFTR expression during human nephrogenesis. *Am J Physiol* 271:F723–F735
 74. Diakov A, Korbmacher C (2004) A novel pathway of epithelial sodium channel activation involves a serum- and glucocorticoid-inducible kinase consensus motif in the C terminus of the channel's α -subunit. *J Biol Chem* 279:38134–38142
 75. Diakov A, Bera K, Mokrushina M, Krueger B, Korbmacher C (2008) Cleavage in the γ -subunit of the epithelial sodium channel (ENaC) plays an important role in the proteolytic activation of near-silent channels. *J Physiol* 586:4587–4608
 76. Dijkink L, Hartog A, Deen PM, van Os CH, Bindels RJ (1999) Time-dependent regulation by aldosterone of the amiloride-sensitive Na⁺ channel in rabbit kidney. *Pflugers Arch* 438:354–360
 77. Dijkink L, Hartog A, van Os CH, Bindels RJ (2002) The epithelial sodium channel (ENaC) is intracellularly located as a tetramer. *Pflugers Arch* 444:549–555
 78. Dinudom A, Fotia AB, Lefkowitz RJ, Young JA, Kumar S, Cook DI (2004) The kinase Grk2 regulates Nedd4/Nedd4–2-dependent

- control of epithelial Na⁺ channels. Proc Natl Acad Sci U S A 101:11886–11890
79. Djelidi S, Fay M, Cluzeaud F, Escoubet B, Eugene E, Capurro C, Bonvalet JP, Farman N, Blot-Chabaud M (1997) Transcriptional regulation of sodium transport by vasopressin in renal cells. J Biol Chem 272:32919–32924
 80. Donaldson SH, Boucher RC (2007) Sodium channels and cystic fibrosis. Chest 132:1631–1636
 81. Dorup J (1985) Ultrastructure of distal nephron cells in rat renal cortex. J Ultrastruct Res 92:101–118
 82. Dorup J (1988) Ultrastructure of three-dimensionally localized distal nephron segments in superficial cortex of the rat kidney. J Ultrastruct Mol Struct Res 99:169–187
 83. Dorup J, Morsing P, Rasch R (1992) Tubule-tubule and tubule-arteriole contacts in rat kidney distal nephrons. A morphologic study based on computer-assisted three-dimensional reconstructions. Lab Invest 67:761–769
 84. Doucet A, Katz AI (1981) Mineralocorticoid receptors along the nephron: [3H]aldosterone binding in rabbit tubules. Am J Physiol 241:F605–F611
 85. Dupont J, LeRoith D (2001) Insulin and insulin-like growth factor I receptors: similarities and differences in signal transduction. Horm Res 55(Suppl 2):22–26
 86. Ecelbarger CA, Kim GH, Terris J, Masilamani S, Mitchell C, Reyes I, Verbalis JG, Knepper MA (2000) Vasopressin-mediated regulation of epithelial sodium channel abundance in rat kidney. Am J Physiol Renal Physiol 279:F46–F53
 87. Ecelbarger CA, Tiwari S (2006) Sodium transporters in the distal nephron and disease implications. Curr Hypertens Rep 8:158–165
 88. Entingh-Pearsall A, Kahn CR (2004) Differential roles of the insulin and insulin-like growth factor-I (IGF-I) receptors in response to insulin and IGF-I. J Biol Chem 279:38016–38024
 89. Ergonul Z, Frindt G, Palmer LG (2006) Regulation of maturation and processing of ENaC subunits in the rat kidney. Am J Physiol Renal Physiol 291:F683–F693
 90. Eskandari S, Snyder PM, Kreman M, Zampighi GA, Welsh MJ, Wright EM (1999) Number of subunits comprising the epithelial sodium channel. J Biol Chem 274:27281–27286
 91. Fakitsas P, Adam G, Daidie D, van Bemmelen MX, Fouladkou F, Patrignani A, Wagner U, Warth R, Camargo SM, Staub O, Verrey F (2007) Early aldosterone-induced gene product regulates the epithelial sodium channel by deubiquitylation. J Am Soc Nephrol 18:1084–1092
 92. Farman N, Vandewalle A, Bonvalet JP (1982) Aldosterone binding in isolated tubules II. An autoradiographic study of concentration dependency in the rabbit nephron. Am J Physiol 242:F69–F77
 93. Fava C, von Wowern F, Berglund G, Carlson J, Hedblad B, Rosberg L, Burri P, Almgren P, Melander O (2006) 24-h ambulatory blood pressure is linked to chromosome 18q21–22 and genetic variation of NEDD4L associates with cross-sectional and longitudinal blood pressure in Swedes. Kidney Int 70:562–569
 94. Fejes-Toth G, Naray-Fejes-Toth A (2001) Immunohistochemical localization of colonic H-K-ATPase to the apical membrane of connecting tubule cells. Am J Physiol Renal Physiol 281:F318–F325
 95. Fejes-Toth G, Frindt G, Naray-Fejes-Toth A, Palmer LG (2008) Epithelial Na⁺ channel activation and processing in mice lacking SGK1. Am J Physiol Renal Physiol 294:F1298–F1305
 96. Fenton RA, Brond L, Nielsen S, Praetorius J (2007) Cellular and subcellular distribution of the type-2 vasopressin receptor in the kidney. Am J Physiol Renal Physiol 293:F748–F760
 97. Feraille E, Mordasini D, Gonin S, Deschenes G, Vinciguerra M, Doucet A, Vandewalle A, Summa V, Verrey F, Martin PY (2003) Mechanism of control of Na, K-ATPase in principal cells of the mammalian collecting duct. Ann N Y Acad Sci 986:570–578
 98. Figueroa CD, MacIver AG, Mackenzie JC, Bhoola KD (1988) Localisation of immunoreactive kininogen and tissue kallikrein in the human nephron. Histochemistry 89:437–442
 99. Firsov D, Schild L, Gautschi I, Merillat AM, Schneeberger E, Rossier BC (1996) Cell surface expression of the epithelial Na⁺ channel and a mutant causing Liddle syndrome: a quantitative approach. Proc Natl Acad Sci U S A 93:15370–15375
 100. Firsov D, Gautschi I, Merillat AM, Rossier BC, Schild L (1998) The heterotetrameric architecture of the epithelial sodium channel (ENaC). EMBO J 17:344–352
 101. Flores SY, Loffing-Cueni D, Kamynina E, Daidie D, Gerbex C, Chabanel S, Dudler J, Loffing J, Staub O (2005) Aldosterone-induced serum and glucocorticoid-induced kinase 1 expression is accompanied by Nedd4–2 phosphorylation and increased Na⁺ transport in cortical collecting duct cells. J Am Soc Nephrol 16:2279–2287
 102. Fouladkou F, Alikhani-Koopaei R, Vogt B, Flores SY, Malbert-Colas L, Lecomte MC, Loffing J, Frey FJ, Frey BM, Staub O (2004) A naturally occurring human Nedd4–2 variant displays impaired ENaC regulation in *Xenopus laevis* oocytes. Am J Physiol Renal Physiol 287:F550–F561
 103. Friedrich B, Feng Y, Cohen P, Risler T, Vandewalle A, Broer S, Wang J, Pearce D, Lang F (2003) The serine/threonine kinases SGK2 and SGK3 are potent stimulators of the epithelial Na⁺ channel alpha, beta, gamma-ENaC. Pflugers Arch 445:693–696
 104. Frindt G, Masilamani S, Knepper MA, Palmer LG (2001) Activation of epithelial Na channels during short-term Na deprivation. Am J Physiol Renal Physiol 280:F112–F118
 105. Frindt G, McNair T, Dahlmann A, Jacobs-Palmer E, Palmer LG (2002) Epithelial Na channels and short-term renal response to salt deprivation. Am J Physiol Renal Physiol 283:F717–F726
 106. Frindt G, Palmer LG (2004) Na channels in the rat connecting tubule. Am J Physiol Renal Physiol 286:F669–F674
 107. Frindt G, Ergonul Z, Palmer LG (2008) Surface expression of epithelial Na channel protein in rat kidney. J Gen Physiol 131:617–627
 108. Fronius M, Clauss WG (2008) Mechano-sensitivity of ENaC: may the (shear) force be with you. Pflugers Arch 455:775–785
 109. Fuller PJ, Young MJ (2005) Mechanisms of mineralocorticoid action. Hypertension 46:1227–1235
 110. Funder JW (2005) Mineralocorticoid receptors: distribution and activation. Heart Fail Rev 10:15–22
 111. Gamba G (2005) Molecular physiology and pathophysiology of electroneutral cation-chloride cotransporters. Physiol Rev 85:423–493
 112. Garg LC, Knepper MA, Burg MB (1981) Mineralocorticoid effects on Na-K-ATPase in individual nephron segments. Am J Physiol 240:F536–F544
 113. Garty H, Edelman IS (1983) Amiloride-sensitive trypsinization of apical sodium channels. Analysis of hormonal regulation of sodium transport in toad bladder. J Gen Physiol 81:785–803
 114. Garty H, Palmer LG (1997) Epithelial sodium channels: function, structure, and regulation. Physiol Rev 77:359–396
 115. Goldfarb SB, Kashlan OB, Watkins JN, Suaud L, Yan W, Kleyman TR, Rubenstein RC (2006) Differential effects of Hsc70 and Hsp70 on the intracellular trafficking and functional expression of epithelial sodium channels. Proc Natl Acad Sci U S A 103:5817–5822
 116. Gonzalez-Rodriguez E, Gaeggeler HP, Rossier BC (2007) IGF-1 vs insulin: respective roles in modulating sodium transport via the PI-3 kinase/Sgk1 pathway in a cortical collecting duct cell line. Kidney Int 71:116–125
 117. Gormley K, Dong Y, Sagnella GA (2003) Regulation of the epithelial sodium channel by accessory proteins. Biochem J 371:1–14

118. Goulet CC, Volk KA, Adams CM, Prince LS, Stokes JB, Snyder PM (1998) Inhibition of the epithelial Na⁺ channel by interaction of Nedd4 with a PY motif deleted in Liddle's syndrome. *J Biol Chem* 273:30012–30017
119. Grahmmer F, Artunc F, Sandulache D, Rexhepaj R, Friedrich B, Risler T, McCormick JA, Dawson K, Wang J, Pearce D, Wulff P, Kuhl D, Lang F (2006) Renal function of gene-targeted mice lacking both SGK1 and SGK3. *Am J Physiol Regul Integr Comp Physiol* 290:R945–R950
120. Grimm PR, Foutz RM, Brenner R, Sansom SC (2007) Identification and localization of BK-beta subunits in the distal nephron of the mouse kidney. *Am J Physiol Renal Physiol* 293: F350–F359
121. Grimm PR, Sansom SC (2007) BK channels in the kidney. *Curr Opin Nephrol Hypertens* 16:430–436
122. Guder WG, Hallbach J, Fink E, Kaissling B, Wirthensohn G (1987) Kallikrein (kininogenase) in the mouse nephron: effect of dietary potassium. *Biol Chem Hoppe Seyler* 368:637–645
123. Hager H, Kwon TH, Vinnikova AK, Masilamani S, Brooks HL, Frokiaer J, Knepper MA, Nielsen S (2001) Immunocytochemical and immunoelectron microscopic localization of α -, β -, and γ -ENaC in rat kidney. *Am J Physiol Renal Physiol* 280:F1093–F1106
124. Hammerman MR, Miller SB (1993) The growth hormone insulin-like growth factor axis in kidney revisited. *Am J Physiol* 265:F1–F14
125. Hansen TK, Moller J, Thomsen K, Frandsen E, Dall R, Jorgensen JO, Christiansen JS (2001) Effects of growth hormone on renal tubular handling of sodium in healthy humans. *Am J Physiol Endocrinol Metab* 281:E1326–E1332
126. Hanwell D, Ishikawa T, Saleki R, Rotin D (2002) Trafficking and cell surface stability of the epithelial Na⁺ channel expressed in epithelial Madin–Darby canine kidney cells. *J Biol Chem* 277:9772–9779
127. Harris M, Firsov D, Vuagniaux G, Stutts MJ, Rossier BC (2007) A novel neutrophil elastase inhibitor prevents elastase activation and surface cleavage of the epithelial sodium channel expressed in *Xenopus laevis* oocytes. *J Biol Chem* 282:58–64
128. Harris M, Garcia-Caballero A, Stutts MJ, Firsov D, Rossier BC (2008) Preferential assembly of epithelial sodium channel (ENaC) subunits in *Xenopus* oocytes: role of furin-mediated endogenous proteolysis. *J Biol Chem* 283:7455–7463
129. Harrison-Bernard LM, Navar LG, Ho MM, Vinson GP, el-Dahr SS (1997) Immunohistochemical localization of ANG II AT1 receptor in adult rat kidney using a monoclonal antibody. *Am J Physiol* 273:F170–F177
130. Hebert SC, Desir G, Giebisch G, Wang W (2005) Molecular diversity and regulation of renal potassium channels. *Physiol Rev* 85:319–371
131. Hill WG, An B, Johnson JP (2002) Endogenously expressed epithelial sodium channel is present in lipid rafts in A6 cells. *J Biol Chem* 277:33541–33544
132. Hill WG, Butterworth MB, Wang H, Edinger RS, Lebowitz J, Peters KW, Frizzell RA, Johnson JP (2007) The epithelial sodium channel (ENaC) traffics to apical membrane in lipid rafts in mouse cortical collecting duct cells. *J Biol Chem* 282:37402–37411
133. Ho KY, Kelly JJ (1991) Role of growth hormone in fluid homeostasis. *Horm Res* 36(Suppl 1):44–48
134. Hoenderop JG, Nilius B, Bindels RJ (2005) Calcium absorption across epithelia. *Physiol Rev* 85:373–422
135. Horisberger JD, Chraïbi A (2004) Epithelial sodium channel: a ligand-gated channel? *Nephron Physiol* 96:37–41
136. Hou J, Speirs HJ, Seckl JR, Brown RW (2002) Sgk1 gene expression in kidney and its regulation by aldosterone: spatio-temporal heterogeneity and quantitative analysis. *J Am Soc Nephrol* 13:1190–1198
137. Howie AJ, Smithson N, Rollason TP (1993) Reconsideration of the development of the distal tubule of the human kidney. *J Anat* 183(Pt 1):141–147
138. Huang DY, Boini KM, Friedrich B, Metzger M, Just L, Osswald H, Wulff P, Kuhl D, Vallon V, Lang F (2006) Blunted hypertensive effect of combined fructose and high-salt diet in gene-targeted mice lacking functional serum- and glucocorticoid-inducible kinase SGK1. *Am J Physiol Regul Integr Comp Physiol* 290:R935–R944
139. Huang DY, Boini KM, Osswald H, Friedrich B, Artunc F, Ullrich S, Rajamanickam J, Palmada M, Wulff P, Kuhl D, Vallon V, Lang F (2006) Resistance of mice lacking the serum- and glucocorticoid-inducible kinase SGK1 against salt-sensitive hypertension induced by a high-fat diet. *Am J Physiol Renal Physiol* 291:F1264–F1273
140. Hughey RP, Bruns JB, Kinlough CL, Harkleroad KL, Tong Q, Carattino MD, Johnson JP, Stockand JD, Kleyman TR (2004) Epithelial sodium channels are activated by furin-dependent proteolysis. *J Biol Chem* 279:18111–18114
141. Hughey RP, Bruns JB, Kinlough CL, Kleyman TR (2004) Distinct pools of epithelial sodium channels are expressed at the plasma membrane. *J Biol Chem* 279:48491–48494
142. Hughey RP, Carattino MD, Kleyman TR (2007) Role of proteolysis in the activation of epithelial sodium channels. *Curr Opin Nephrol Hypertens* 16:444–450
143. Hummler E, Vallon V (2005) Lessons from mouse mutants of epithelial sodium channel and its regulatory proteins. *J Am Soc Nephrol* 16:3160–3166
144. Ichimura T, Yamamura H, Sasamoto K, Tominaga Y, Taoka M, Kakiuchi K, Shinkawa T, Takahashi N, Shimada S, Isobe T (2005) 14–3-3 proteins modulate the expression of epithelial Na⁺ channels by phosphorylation-dependent interaction with Nedd4–2 ubiquitin ligase. *J Biol Chem* 280:13187–13194
145. Imai M (1979) The connecting tubule: a functional subdivision of the rabbit distal nephron segments. *Kidney Int* 15:346–356
146. Jasti J, Furukawa H, Gonzales EB, Goux E (2007) Structure of acid-sensing ion channel 1 at 1.9 Å resolution and low pH. *Nature* 449:316–323
147. Ji HL, Chalfant ML, Jovov B, Lockhart JP, Parker SB, Fuller CM, Stanton BA, Benos DJ (2000) The cytosolic termini of the beta- and gamma-ENaC subunits are involved in the functional interactions between cystic fibrosis transmembrane conductance regulator and epithelial sodium channel. *J Biol Chem* 275:27947–27956
148. Ji HL, Benos DJ (2004) Degenerin sites mediate proton activation of $\delta\beta\gamma$ -epithelial sodium channel. *J Biol Chem* 279:26939–26947
149. Ji HL, Bishop LR, Anderson SJ, Fuller CM, Benos DJ (2004) The role of Pre-H2 domains of α - and δ -epithelial Na⁺ channels in ion permeation, conductance, and amiloride sensitivity. *J Biol Chem* 279:8428–8440
150. Ji HL, Su XF, Kedar S, Li J, Barbry P, Smith PR, Matalon S, Benos DJ (2006) δ -subunit confers novel biophysical features to $\alpha\beta\gamma$ -human ENaC via a physical interaction. *J Biol Chem* 281:8233–8241
151. Jiang Q, Li J, Dubroff R, Ahn YJ, Foskett JK, Engelhardt J, Kleyman TR (2000) Epithelial sodium channels regulate cystic fibrosis transmembrane conductance regulator chloride channels in *Xenopus* oocytes. *J Biol Chem* 275:13266–13274
152. Kahle KT, Ring AM, Lifton RP (2008) Molecular physiology of the WNK kinases. *Annu Rev Physiol* 70:329–355
153. Kaissling B (1977) Ultrastructural characterization of the connecting tubule and the different segments of the collecting duct system in the rabbit kidney. *Curr Probl Clin Biochem* 8:435–446
154. Kaissling B, Kriz W (1979) Structural analysis of the rabbit kidney. *Adv Anat Embryol Cell Biol* 56:1–123

155. Kaissling B, Kriz W (1982) Axial heterogeneity of the 'distal tubule'. *Contrib Nephrol* 33:29–47
156. Kaissling B, Le Hir M (1982) Distal tubular segments of the rabbit kidney after adaptation to altered Na- and K-intake. I. Structural changes. *Cell Tissue Res* 224:469–492
157. Kaissling B, Kriz W (1992) Morphology of the loop of Henle, distal tubule and collecting duct. In: EE W (ed) *Handbook of physiology: section on renal physiology*. Oxford University Press, New York, pp 109–167
158. Kamenicky P, Viengchareun S, Blanchard A, Meduri G, Zizzari P, Imbert-Teboul M, Doucet A, Chanson P, Lombes M (2008) Epithelial sodium channel is a key mediator of growth hormone-induced sodium retention in acromegaly. *Endocrinology* 149:3294–3305
159. Karpushev AV, Levchenko V, Pavlov TS, Lam VY, Vinnakota KC, Vandewalle A, Wakatsuki T, Staruschenko A (2008) Regulation of ENaC expression at the cell surface by Rab11. *Biochem Biophys Res Commun* 377:521–525
160. Katz AI, Doucet A, Morel F (1979) Na-K-ATPase activity along the rabbit, rat, and mouse nephron. *Am J Physiol* 237:F114–F120
161. Kellenberger S, Gautschi I, Rossier BC, Schild L (1998) Mutations causing Liddle syndrome reduce sodium-dependent downregulation of the epithelial sodium channel in the *Xenopus* oocyte expression system. *J Clin Invest* 101:2741–2750
162. Kellenberger S, Schild L (2002) Epithelial sodium channel/degnerin family of ion channels: a variety of functions for a shared structure. *Physiol Rev* 82:735–767
163. Kibble JD, Neal AM, Colledge WH, Green R, Taylor CJ (2000) Evidence for cystic fibrosis transmembrane conductance regulator-dependent sodium reabsorption in kidney, using *Cfr* (*tm2cam*) mice. *J Physiol* 526(Pt 1):27–34
164. Kim J, Kim YH, Cha JH, Tisher CC, Madsen KM (1999) Intercalated cell subtypes in connecting tubule and cortical collecting duct of rat and mouse. *J Am Soc Nephrol* 10:1–12
165. Kim SW, Wang W, Nielsen J, Praetorius J, Kwon TH, Knepper MA, Frokiaer J, Nielsen S (2004) Increased expression and apical targeting of renal ENaC subunits in puromycin aminonucleoside-induced nephrotic syndrome in rats. *Am J Physiol Renal Physiol* 286:F922–F935
166. Kim SW, Frokiaer J, Nielsen S (2007) Pathogenesis of oedema in nephrotic syndrome: role of epithelial sodium channel. *Nephrology (Carlton)* 12(Suppl 3):S8–S10
167. Kim YH, Pech V, Spencer KB, Beierwaltes WH, Everett LA, Green ED, Shin W, Verlander JW, Sutliff RL, Wall SM (2007) Reduced ENaC protein abundance contributes to the lower blood pressure observed in *pendrin*-null mice. *Am J Physiol Renal Physiol* 293:F1314–F1324
168. Kleyman TR, Emst SA, Coupaye-Gerard B (1994) Arginine vasopressin and forskolin regulate apical cell surface expression of epithelial Na⁺ channels in A6 cells. *Am J Physiol* 266:F506–F511
169. Kleyman TR, Myerburg MM, Hughey RP (2006) Regulation of ENaCs by proteases: an increasingly complex story. *Kidney Int* 70:1391–1392
170. Knepper MA, Kim GH, Masilamani S (2003) Renal tubule sodium transporter abundance profiling in rat kidney: response to aldosterone and variations in NaCl intake. *Ann N Y Acad Sci* 986:562–569
171. Knight KK, Olson DR, Zhou R, Snyder PM (2006) Liddle's syndrome mutations increase Na⁺ transport through dual effects on epithelial Na⁺ channel surface expression and proteolytic cleavage. *Proc Natl Acad Sci U S A* 103:2805–2808
172. Kobayashi T, Deak M, Morrice N, Cohen P (1999) Characterization of the structure and regulation of two novel isoforms of serum- and glucocorticoid-induced protein kinase. *Biochem J* 344(Pt 1):189–197
173. Konig J, Schreiber R, Voelcker T, Mall M, Kunzelmann K (2001) The cystic fibrosis transmembrane conductance regulator (CFTR) inhibits ENaC through an increase in the intracellular Cl⁻ concentration. *EMBO Rep* 2:1047–1051
174. Konstas AA, Koch JP, Tucker SJ, Korbmacher C (2002) Cystic fibrosis transmembrane conductance regulator-dependent up-regulation of Kir1.1 (ROMK) renal K⁺ channels by the epithelial sodium channel. *J Biol Chem* 277:25377–25384
175. Konstas AA, Shearwin-Whyatt LM, Fotia AB, Degger B, Riccardi D, Cook DI, Korbmacher C, Kumar S (2002) Regulation of the epithelial sodium channel by N4WBP5A, a novel Nedd4/Nedd4–2-interacting protein. *J Biol Chem* 277:29406–29416
176. Konstas AA, Koch JP, Korbmacher C (2003) cAMP-dependent activation of CFTR inhibits the epithelial sodium channel (ENaC) without affecting its surface expression. *Pflugers Arch* 445(4):513–521
177. Kosari F, Sheng S, Li J, Mak DO, Foskett JK, Kleyman TR (1998) Subunit stoichiometry of the epithelial sodium channel. *J Biol Chem* 273:13469–13474
178. Kumar JM, Brooks DP, Olson BA, Laping NJ (1999) Sgk, a putative serine/threonine kinase, is differentially expressed in the kidney of diabetic mice and humans. *J Am Soc Nephrol* 10:2488–2494
179. Kunzelmann K, Schreiber R, Nitschke R, Mall M (2000) Control of epithelial Na⁺ conductance by the cystic fibrosis transmembrane conductance regulator. *Pflugers Arch* 440:193–201
180. Kunzelmann K, Bachhuber T, Reeger R, Markovich D, Sun J, Schreiber R (2005) Purinergic inhibition of the epithelial Na⁺ transport via hydrolysis of PIP2. *FASEB J* 19:142–143
181. Lang F, Klingel K, Wagner CA, Stegen C, Warntges S, Friedrich B, Lanzendorfer M, Melzig J, Moschen I, Steuer S, Waldegger S, Sauter M, Paulmichl M, Gerke V, Risler T, Gamba G, Capasso G, Kandolf R, Hebert SC, Massry SG, Broer S (2000) Deranged transcriptional regulation of cell-volume-sensitive kinase hSGK in diabetic nephropathy. *Proc Natl Acad Sci U S A* 97:8157–8162
182. Lang F, Bohmer C, Palmada M, Seebohm G, Strutz-Seebohm N, Vallon V (2006) (Patho) physiological significance of the serum- and glucocorticoid-inducible kinase isoforms. *Physiol Rev* 86:1151–1178
183. Lau SO, Tkachuck JY, Hasegawa DK, Edson JR (1980) Plasminogen and antithrombin III deficiencies in the childhood nephrotic syndrome associated with plasminogenuria and antithrombinuria. *J Pediatr* 96:390–392
184. Le Hir M, Kaissling B, Dubach UC (1982) Distal tubular segments of the rabbit kidney after adaptation to altered Na- and K-intake. II. Changes in Na-K-ATPase activity. *Cell Tissue Res* 224:493–504
185. Lebowitz J, Edinger RS, An B, Perry CJ, Onate S, Kleyman TR, Johnson JP (2004) IκBkinase-β (IKKβ) modulation of epithelial sodium channel activity. *J Biol Chem* 279:41985–41990
186. Lee IH, Dinudom A, Sanchez-Perez A, Kumar S, Cook DI (2007) Akt mediates the effect of insulin on epithelial sodium channels by inhibiting Nedd4–2. *J Biol Chem* 282:29866–29873
187. Lee IH, Campbell CR, Cook DI, Dinudom A (2008) Regulation of epithelial Na⁺ channels by aldosterone: role of Sgk1. *Clin Exp Pharmacol Physiol* 35:235–241
188. Lehrmann H, Thomas J, Kim SJ, Jacobi C, Leipziger J (2002) Luminal P2Y2 receptor-mediated inhibition of Na⁺ absorption in isolated perfused mouse CCD. *J Am Soc Nephrol* 13:10–18
189. Letz B, Korbmacher C (1997) cAMP stimulates CFTR-like Cl⁻ channels and inhibits amiloride-sensitive Na⁺ channels in mouse CCD cells. *Am J Physiol* 272:C657–C666
190. Lewis SA, Alles WP (1986) Urinary kallikrein: a physiological regulator of epithelial Na⁺ absorption. *Proc Natl Acad Sci U S A* 83:5345–5348

191. Li Y, Konings IB, Zhao J, Price LS, de Heer E, Deen PM (2008) Renal expression of exchange protein directly activated by cAMP (Epac) 1 and 2. *Am J Physiol Renal Physiol* 295:F525–F533
192. Liang X, Peters KW, Butterworth MB, Frizzell RA (2006) 14-3-3 isoforms are induced by aldosterone and participate in its regulation of epithelial sodium channels. *J Biol Chem* 281:16323–16332
193. Liddle GW, Bledsoe T, Coppage WS (1963) A familial renal disorder simulating primary aldosteronism but with negligible aldosterone secretion. *Trans Assoc Am Physicians* 76:199–213
194. Lifton RP, Gharavi AG, Geller DS (2001) Molecular mechanisms of human hypertension. *Cell* 104:545–556
195. Loffing-Cueni D, Flores SY, Sauter D, Daidie D, Siegrist N, Meneton P, Staub O, Loffing J (2006) Dietary sodium intake regulates the ubiquitin-protein ligase Nedd4-2 in the renal collecting system. *J Am Soc Nephrol* 17:1264–1274
196. Loffing J, Loffing-Cueni D, Macher A, Hebert SC, Olson B, Knepper MA, Rossier BC, Kaissling B (2000) Localization of epithelial sodium channel and aquaporin-2 in rabbit kidney cortex. *Am J Physiol Renal Physiol* 278:F530–F539
197. Loffing J, Pietri L, Aregger F, Bloch-Faure M, Ziegler U, Meneton P, Rossier BC, Kaissling B (2000) Differential subcellular localization of ENaC subunits in mouse kidney in response to high- and low-Na diets. *Am J Physiol Renal Physiol* 279:F252–F258
198. Loffing J, Zecevic M, Feraille E, Kaissling B, Asher C, Rossier BC, Firestone GL, Pearce D, Verrey F (2001) Aldosterone induces rapid apical translocation of ENaC in early portion of renal collecting system: possible role of SGK. *Am J Physiol Renal Physiol* 280:F675–F682
199. Loffing J, Kaissling B (2003) Sodium and calcium transport pathways along the mammalian distal nephron: from rabbit to human. *Am J Physiol Renal Physiol* 284:F628–F643
200. Loffing J, Vallon V, Loffing-Cueni D, Aregger F, Richter K, Pietri L, Bloch-Faure M, Hoenderop JG, Shull GE, Meneton P, Kaissling B (2004) Altered renal distal tubule structure and renal Na⁺ and Ca²⁺ handling in a mouse model for Gitelman's syndrome. *J Am Soc Nephrol* 15:2276–2288
201. Loffing J, Flores SY, Staub O (2006) Sgk kinases and their role in epithelial transport. *Annu Rev Physiol* 68:461–490
202. Lourdel S, Loffing J, Favre G, Paulais M, Nissant A, Fakitsas P, Creminon C, Feraille E, Verrey F, Teulon J, Doucet A, Deschenes G (2005) Hyperaldosteronemia and activation of the epithelial sodium channel are not required for sodium retention in puromycin-induced nephrosis. *J Am Soc Nephrol* 16:3642–3650
203. Lu C, Jiang C, Pribanic S, Rotin D (2007) CFTR stabilizes ENaC at the plasma membrane. *J Cyst Fibros* 6:419–422
204. Lu C, Pribanic S, Debonneville A, Jiang C, Rotin D (2007) The PY motif of ENaC, mutated in Liddle syndrome, regulates channel internalization, sorting and mobilization from subapical pool. *Traffic* 8:1246–1264
205. Madala Halagappa VK, Tiwari S, Riaz S, Hu X, Ecelbarger CM (2008) Chronic candesartan alters expression and activity of NKCC2, NCC, and ENaC in the obese Zucker rat. *Am J Physiol Renal Physiol* 294:F1222–F1231
206. Madsen KM, Tisher CC (1986) Structural–functional relationship along the distal nephron. *Am J Physiol* 250:F1–F15
207. Madsen KM, Verlander JW, Tisher CC (1988) Relationship between structure and function in distal tubule and collecting duct. *J Electron Microscop* 9:187–208
208. Malik B, Price SR, Mitch WE, Yue Q, Eaton DC (2006) Regulation of epithelial sodium channels by the ubiquitin-proteasome proteolytic pathway. *Am J Physiol Renal Physiol* 290:F1285–F1294
209. Mall M, Grubb BR, Harkema JR, O'Neal WK, Boucher RC (2004) Increased airway epithelial Na⁺ absorption produces cystic fibrosis-like lung disease in mice. *Nat Med* 10:487–493
210. Malnic G, Klose RM, Giebisch G (1966) Micropuncture study of distal tubular potassium and sodium transport in rat nephron. *Am J Physiol* 211:529–547
211. Marchetti J, Imbert-Teboul M, Alhenc-Gelas F, Allegrini J, Menard J, Morel F (1984) Kallikrein along the rabbit microdissected nephron: a micromethod for its measurement. Effect of adrenalectomy and DOCA treatment. *Pflugers Arch* 401:27–33
212. Margolius H, Geller R, Pisano J, Sjoerdsma A (1971) Altered urinary kallikrein excretion in human hypertension. *The Lancet* 2:1063–1065
213. Marunaka Y, Hagiwara N, Tohda H (1992) Insulin activates single amiloride-blockable Na channels in a distal nephron cell line (A6). *Am J Physiol* 263:F392–F400
214. Masilamani S, Kim GH, Mitchell C, Wade JB, Knepper MA (1999) Aldosterone-mediated regulation of ENaC α , β , and γ subunit proteins in rat kidney. *J Clin Invest* 104:R19–R23
215. Mastroberardino L, Spindler B, Forster I, Loffing J, Assandri R, May A, Verrey F (1998) Ras pathway activates epithelial Na⁺ channel and decreases its surface expression in *Xenopus* oocytes. *Mol Biol Cell* 9:3417–3427
216. Matsumoto PS, Ohara A, Duchatelle P, Eaton DC (1993) Tyrosine kinase regulates epithelial sodium transport in A6 cells. *Am J Physiol* 264:C246–C250
217. May A, Puoti A, Gaeggeler HP, Horisberger JD, Rossier BC (1997) Early effect of aldosterone on the rate of synthesis of the epithelial sodium channel alpha subunit in A6 renal cells. *J Am Soc Nephrol* 8:1813–1822
218. McCormick JA, Feng Y, Dawson K, Behne MJ, Yu B, Wang J, Wyatt AW, Henke G, Grahmmer F, Mauro TM, Lang F, Pearce D (2004) Targeted disruption of the protein kinase SGK3/CISK impairs postnatal hair follicle development. *Mol Biol Cell* 15:4278–4288
219. McEneaney V, Harvey BJ, Thomas W (2008) Aldosterone regulates rapid trafficking of epithelial sodium channel subunits in renal cortical collecting duct cells via protein kinase D activation. *Mol Endocrinol* 22:881–892
220. Meneton P, Loffing J, Warnock DG (2004) Sodium and potassium handling by the aldosterone-sensitive distal nephron: the pivotal role of the distal and connecting tubule. *Am J Physiol Renal Physiol* 287:F593–F601
221. Mennitt PA, Wade JB, Ecelbarger CA, Palmer LG, Frindt G (1997) Localization of ROMK channels in the rat kidney. *J Am Soc Nephrol* 8:1823–1830
222. Moller J, Jorgensen JO, Marqvorsen J, Frandsen E, Christiansen JS (2000) Insulin-like growth factor I administration induces fluid and sodium retention in healthy adults: possible involvement of renin and atrial natriuretic factor. *Clin Endocrinol (Oxf)* 52:181–186
223. Morel F (1981) Sites of hormone action in the mammalian nephron. *Am J Physiol* 240:F159–F164
224. Morimoto T, Liu W, Woda C, Carattino MD, Wei Y, Hughey RP, Apodaca G, Satlin LM, Kleymen TR (2006) Mechanism underlying flow stimulation of sodium absorption in the mammalian collecting duct. *Am J Physiol Renal Physiol* 291:F663–F669
225. Morris RG, Schafer JA (2002) cAMP increases density of ENaC subunits in the apical membrane of MDCK cells in direct proportion to amiloride-sensitive Na⁺ transport. *J Gen Physiol* 120:71–85
226. Morsing P, Velazquez H, Ellison D, Wright FS (1993) Resetting of tubuloglomerular feedback by interrupting early distal flow. *Acta Physiol Scand* 148:63–68
227. Mujais SK, Kauffman S, Katz AI (1986) Angiotensin II binding sites in individual segments of the rat nephron. *J Clin Invest* 77:315–318

228. Mutig K, Paliege A, Kahl T, Jons T, Muller-Esterl W, Bachmann S (2007) Vasopressin V2 receptor expression along rat, mouse, and human renal epithelia with focus on TAL. *Am J Physiol Renal Physiol* 293:F1166–F1177
229. Nagaki K, Yamamura H, Shimada S, Saito T, Hisanaga S, Taoka M, Isoe T, Ichimura T (2006) 14-3-3 Mediates phosphorylation-dependent inhibition of the interaction between the ubiquitin E3 ligase Nedd4-2 and epithelial Na⁺ channels. *Biochemistry* 45:6733–6740
230. Nagel G, Szellas T, Riordan JR, Friedrich T, Hartung K (2001) Non-specific activation of the epithelial sodium channel by the CFTR chloride channel. *EMBO Rep* 2:249–254
231. Nagy Z, Busjahn A, Bähring S, Faulhaber HD, Gohlke HR, Knoblauch H, Rosenthal M, Muller-Myhsok B, Schuster H, Luft FC (1999) Quantitative trait loci for blood pressure exist near the IGF-1, the Liddle syndrome, the angiotensin II-receptor gene and the renin loci in man. *J Am Soc Nephrol* 10:1709–1716
232. Naray-Fejes-Toth A, Canessa C, Cleaveland ES, Aldrich G, Fejes-Toth G (1999) sgk is an aldosterone-induced kinase in the renal collecting duct. Effects on epithelial Na⁺ channels. *J Biol Chem* 274:16973–16978
233. Nariakiyo T, Kitamura K, Adachi M, Miyoshi T, Iwashita K, Shiraiishi N, Nonoguchi H, Chen LM, Chai KX, Chao J, Tomita K (2002) Regulation of prostaticin by aldosterone in the kidney. *J Clin Invest* 109:401–408
234. Neiss WF, Klehn KL (1981) The postnatal development of the rat kidney, with special reference to the chemodifferentiation of the proximal tubule. *Histochemistry* 73:251–268
235. Nesterov V, Dahlmann A, Bertog M, Korbmacher C (2008) Trypsin can activate the epithelial sodium channel (ENaC) in microdissected mouse distal nephron. *Am J Physiol Renal Physiol* 295:F1052–F1062
236. Nicco C, Wittner M, DiStefano A, Jounier S, Bankir L, Bouby N (2001) Chronic exposure to vasopressin upregulates ENaC and sodium transport in the rat renal collecting duct and lung. *Hypertension* 38:1143–1149
237. Nicod M, Michlig S, Flahaut M, Salinas M, Fowler Jaeger N, Horisberger JD, Rossier BC, Firsov D (2002) A novel vasopressin-induced transcript promotes MAP kinase activation and ENaC downregulation. *EMBO J* 21:5109–5117
238. Nielsen J, Kwon TH, Masilamani S, Beutler K, Hager H, Nielsen S, Knepper MA (2002) Sodium transporter abundance profiling in kidney: effect of spironolactone. *Am J Physiol Renal Physiol* 283:F923–F933
239. Nielsen J, Kwon TH, Frokiaer J, Knepper MA, Nielsen S (2007) Maintained ENaC trafficking in aldosterone-infused rats during mineralocorticoid and glucocorticoid receptor blockade. *Am J Physiol Renal Physiol* 292:F382–F394
240. Oda T, Hotta O, Taguma Y, Kitamura H, Sudo K, Horigome I, Chiba S, Yoshizawa N, Nagura H (1997) Involvement of neutrophil elastase in crescentic glomerulonephritis. *Hum Pathol* 28:720–728
241. Olivieri O, Castagna A, Guarini P, Chiecchi L, Sabaini G, Pizzolo F, Corrocher R, Righetti PG (2005) Urinary prostaticin: a candidate marker of epithelial sodium channel activation in humans. *Hypertension* 46:683–688
242. Omata K, Carretero OA, Itoh S, Scicli AG (1983) Active and inactive kallikrein in rabbit connecting tubules and urine during low and normal sodium intake. *Kidney Int* 24:714–718
243. Orce GG, Castillo GA, Margolius HS (1980) Inhibition of short-circuit current in toad urinary bladder by inhibitors of glandular kallikrein. *Am J Physiol* 239:F459–F465
244. Osathanondh V, Potter EL (1966) Development of human kidney as shown by microdissection. IV. Development of tubular portions of nephrons. *Arch Pathol* 82:391–402
245. Pacha J, Frindt G, Antonian L, Silver RB, Palmer LG (1993) Regulation of Na channels of the rat cortical collecting tubule by aldosterone. *J Gen Physiol* 102:25–42
246. Palmer LG, Frindt G (2007) Na⁺ and K⁺ transport by the renal connecting tubule. *Curr Opin Nephrol Hypertens* 16:477–483
247. Palmer LG, Frindt G (2007) High-conductance K channels in intercalated cells of the rat distal nephron. *Am J Physiol Renal Physiol* 292:F966–F973
248. Passero CJ, Mueller GM, Rondon-Berrios H, Tofovic SP, Hughey RP, Kleyman TR (2008) Plasmin activates epithelial Na⁺ channels by cleaving the γ subunit. *J Biol Chem* 283:36586–36591
249. Pearce D (2003) SGK1 regulation of epithelial sodium transport. *Cell Physiol Biochem* 13:13–20
250. Perrotti N, He RA, Phillips SA, Haft CR, Taylor SI (2001) Activation of serum- and glucocorticoid-induced protein kinase (Sgk) by cyclic AMP and insulin. *J Biol Chem* 276:9406–9412
251. Peti-Peterdi J, Warnock DG, Bell PD (2002) Angiotensin II directly stimulates ENaC activity in the cortical collecting duct via AT(1) receptors. *J Am Soc Nephrol* 13:1131–1135
252. Picard N, Eladari D, El Moghrabi S, Planes C, Bourgeois S, Houillier P, Wang Q, Burnier M, Deschenes G, Knepper MA, Meneton P, Chambrey R (2008) Defective ENaC processing and function in tissue kallikrein-deficient mice. *J Biol Chem* 283:4602–4611
253. Piedagnel R, Tiger Y, Lelongt B, Ronco PM (2006) Urokinase (u-PA) is produced by collecting duct principal cells and is post-transcriptionally regulated by SV40 large-T, arginine vasopressin, and epidermal growth factor. *J Cell Physiol* 206:394–401
254. Planes C, Caughey GH (2007) Regulation of the epithelial Na⁺ channel by peptidases. *Curr Top Dev Biol* 78:23–46
255. Plant PJ, Lafont F, Lecat S, Verkade P, Simons K, Rotin D (2000) Apical membrane targeting of Nedd4 is mediated by an association of its C2 domain with annexin XIIIb. *J Cell Biol* 149:1473–1484
256. Pochynyuk O, Staruschenko A, Tong Q, Medina J, Stockand JD (2005) Identification of a functional phosphatidylinositol 3, 4, 5-trisphosphate binding site in the epithelial Na⁺ channel. *J Biol Chem* 280:37565–37571
257. Pochynyuk O, Tong Q, Staruschenko A, Ma HP, Stockand JD (2006) Regulation of the epithelial Na⁺ channel (ENaC) by phosphatidylinositides. *Am J Physiol Renal Physiol* 290:F949–F957
258. Pochynyuk O, Tong Q, Medina J, Vandewalle A, Staruschenko A, Bugaj V, Stockand JD (2007) Molecular determinants of PI(4, 5) P2 and PI(3, 4, 5) P3 regulation of the epithelial Na⁺ channel. *J Gen Physiol* 130:399–413
259. Pochynyuk O, Bugaj V, Rieg T, Insel PA, Mironova E, Vallon V, Stockand JD (2008) Paracrine regulation of the epithelial Na⁺ channel in the mammalian collecting duct by purinergic P2Y2 receptor tone. *J Biol Chem* 283:36599–36607
260. Pochynyuk O, Bugaj V, Stockand JD (2008) Physiologic regulation of the epithelial sodium channel by phosphatidylinositides. *Curr Opin Nephrol Hypertens* 17:533–540
261. Pochynyuk O, Bugaj V, Vandewalle A, Stockand JD (2008) Purinergic control of apical plasma membrane PI(4, 5) P2 levels sets ENaC activity in principal cells. *Am J Physiol Renal Physiol* 294:F38–F46
262. Proud D, Knepper MA, Pisano JJ (1983) Distribution of immunoreactive kallikrein along the rat nephron. *Am J Physiol* 244:F510–F515
263. Qi J, Peters KW, Liu C, Wang JM, Edinger RS, Johnson JP, Watkins SC, Frizzell RA (1999) Regulation of the amiloride-sensitive epithelial sodium channel by syntaxin 1A. *J Biol Chem* 274:30345–30348
264. Raciti D, Reggiani L, Geffers L, Jiang Q, Bacchion F, Subrizi AE, Clements D, Tindal C, Davidson DR, Kaissling B, Brandli

- AW (2008) Organization of the pronephric kidney revealed by large-scale gene expression mapping. *Genome Biol* 9:R84
265. Rauh R, Dinudom A, Fotia AB, Paulides M, Kumar S, Korbmacher C, Cook DI (2006) Stimulation of the epithelial sodium channel (ENaC) by the serum- and glucocorticoid-inducible kinase (Sgk) involves the PY motifs of the channel but is independent of sodium feedback inhibition. *Pflugers Arch* 452:290–299
266. Reddy MM, Light MJ, Quinton PM (1999) Activation of the epithelial Na⁺ channel (ENaC) requires CFTR Cl⁻ channel function. *Nature* 402:301–304
267. Reif MC, Troutman SL, Schafer JA (1986) Sodium transport by rat cortical collecting tubule. Effects of vasopressin and desoxycorticosterone. *J Clin Invest* 77:1291–1298
268. Reilly RF, Ellison DH (2000) Mammalian distal tubule: physiology, pathophysiology, and molecular anatomy. *Physiol Rev* 80:277–313
269. Ren Y, Garvin JL, Liu R, Carretero OA (2007) Crosstalk between the connecting tubule and the afferent arteriole regulates renal microcirculation. *Kidney Int* 71:1116–1121
270. Ren Y, D'Ambrosio MA, Garvin JL, Wang H, Carretero OA (2009) Possible mediators of connecting tubule glomerular feedback. *Hypertension* 53:319
271. Renard S, Lingueglia E, Voilley N, Lazdunski M, Barbry P (1994) Biochemical analysis of the membrane topology of the amiloride-sensitive Na⁺ channel. *J Biol Chem* 269:12981–12986
272. Riazi S, Khan O, Hu X, Ecelbarger CA (2006) Aldosterone infusion with high-NaCl diet increases blood pressure in obese but not lean Zucker rats. *Am J Physiol Renal Physiol* 291:F597–F605
273. Riazi S, Khan O, Tiwari S, Hu X, Ecelbarger CA (2006) Rosiglitazone regulates ENaC and Na-K-2Cl cotransporter (NKCC2) abundance in the obese Zucker rat. *Am J Nephrol* 26:245–257
274. Riazi S, Madala-Halagappa VK, Hu X, Ecelbarger CA (2006) Sex and body-type interactions in the regulation of renal sodium transporter levels, urinary excretion, and activity in lean and obese Zucker rats. *Genet Med* 3:309–327
275. Riazi S, Maric C, Ecelbarger CA (2006) 17-Beta Estradiol attenuates streptozotocin-induced diabetes and regulates the expression of renal sodium transporters. *Kidney Int* 69:471–480
276. Rieg T, Bunday RA, Chen Y, Deschenes G, Junger W, Insel PA, Vallon V (2007) Mice lacking P2Y2 receptors have salt-resistant hypertension and facilitated renal Na⁺ and water reabsorption. *FASEB J* 21:3717–3726
277. Robert-Nicoud M, Flahaut M, Elalouf JM, Nicod M, Salinas M, Bens M, Doucet A, Wincker P, Artiguenave F, Horisberger JD, Vandewalle A, Rossier BC, Firsov D (2001) Transcriptome of a mouse kidney cortical collecting duct cell line: effects of aldosterone and vasopressin. *Proc Natl Acad Sci U S A* 98:2712–2716
278. Rohrwasser A, Morgan T, Dillon HF, Zhao L, Callaway CW, Hillas E, Zhang S, Cheng T, Inagami T, Ward K, Terreros DA, Lalouel JM (1999) Elements of a paracrine tubular renin-angiotensin system along the entire nephron. *Hypertension* 34:1265–1274
279. Ronzaud C, Loffing J, Bleich M, Gretz N, Grone HJ, Schutz G, Berger S (2007) Impairment of sodium balance in mice deficient in renal principal cell mineralocorticoid receptor. *J Am Soc Nephrol* 18:1679–1687
280. Rossier BC (2002) Hormonal regulation of the epithelial sodium channel ENaC: N or P(o)? *J Gen Physiol* 120:67–70
281. Rossier BC (2004) The epithelial sodium channel: activation by membrane-bound serine proteases. *Proc Am Thorac Soc* 1:4–9
282. Rossier BC, Schild L (2008) Epithelial sodium channel: medullian versus essential hypertension. *Hypertension* 52:595–600
283. Rossier BC, Stutts MJ (2009) Activation of the epithelial sodium channel (ENaC) by serine proteases. *Annu Rev Physiol* 71:16.1–16.19
284. Rotin D (2000) Regulation of the epithelial sodium channel (ENaC) by accessory proteins. *Curr Opin Nephrol Hypertens* 9:529–534
285. Rotin D (2008) Role of the UPS in Liddle syndrome. *BMC Biochem* 9(Suppl 1):S5
286. Rotin D, Schild L (2008) ENaC and its regulatory proteins as drug targets for blood pressure control. *Curr Drug Targets* 9:709–716
287. Rubera I, Loffing J, Palmer LG, Frindt G, Fowler-Jaeger N, Sauter D, Carroll T, McMahon A, Hummler E, Rossier BC (2003) Collecting duct-specific gene inactivation of alphaENaC in the mouse kidney does not impair sodium and potassium balance. *J Clin Invest* 112:554–565
288. Rubera I, Hummler E, Beermann F (2008) Transgenic mice and their impact on kidney research. *Pflugers Arch* (in press)
289. Ruffieux-Daidie D, Poirot O, Boulkroun S, Verrey F, Kellenberger S, Staub O (2008) Deubiquitylation regulates activation and proteolytic cleavage of ENaC. *J Am Soc Nephrol* 19:2170–2180
290. Sabirov RZ, Okada Y (2005) ATP release via anion channels. *Purinergic Signal* 1:311–328
291. Sagnella GA, Swift PA (2006) The renal epithelial sodium channel: genetic heterogeneity and implications for the treatment of high blood pressure. *Curr Pharm Des* 12:2221–2234
292. Sauter D, Fernandes S, Goncalves-Mendes N, Boulkroun S, Bankir L, Loffing J, Bouby N (2006) Long-term effects of vasopressin on the subcellular localization of ENaC in the renal collecting system. *Kidney Int* 69:1024–1032
293. Sawicki PT, Heinemann L, Starke A, Berger M (1992) Hyperinsulinaemia is not linked with blood pressure elevation in patients with insulinoma. *Diabetologia* 35:649–652
294. Saxena S, Singh M, Engisch K, Fukuda M, Kaur S (2005) Rab proteins regulate epithelial sodium channel activity in colonic epithelial HT-29 cells. *Biochem Biophys Res Commun* 337:1219–1223
295. Saxena SK, George CM, Pinskiy V, McConnell B (2006) Epithelial sodium channel is regulated by SNAP-23/syntaxin 1A interplay. *Biochem Biophys Res Commun* 343:1279–1285
296. Saxena SK, Horiuchi H, Fukuda M (2006) Rab27a regulates epithelial sodium channel (ENaC) activity through synaptotagmin-like protein (SLP-5) and Munc13-4 effector mechanism. *Biochem Biophys Res Commun* 344:651–657
297. Saxena SK, Singh M, Shibata H, Kaur S, George C (2006) Rab4 GTP/GDP modulates amiloride-sensitive sodium channel (ENaC) function in colonic epithelia. *Biochem Biophys Res Commun* 340:726–733
298. Schafer JA, Hawk CT (1992) Regulation of Na⁺ channels in the cortical collecting duct by AVP and mineralocorticoids. *Kidney Int* 41:255–268
299. Schmitt R, Ellison DH, Farman N, Rossier BC, Reilly RF, Reeves WB, Oberbaumer I, Tapp R, Bachmann S (1999) Developmental expression of sodium entry pathways in rat nephron. *Am J Physiol* 276:F367–F381
300. Scicli AG, Rabito SF, Carretero OA (1983) Blood and urinary kinins in human subjects during normal and low sodium intake. *Adv Exp Med Biol* 156(Pt B):877–882
301. Sheng S, Carattino MD, Bruns JB, Hughey RP, Kleyman TR (2006) Furin cleavage activates the epithelial Na⁺ channel by relieving Na⁺ self-inhibition. *Am J Physiol Renal Physiol* 290:F1488–F1496
302. Sheng S, Johnson JP, Kleyman TR (2007) Epithelial Na⁺ channels. In: Alpern RJ, Hebert SC (eds) *Seldin and Giebisch's the kidney*. Elsevier, Amsterdam, pp 889–924
303. Shi H, Asher C, Chigaev A, Yung Y, Reuveny E, Seger R, Garty H (2002) Interactions of beta and gamma ENaC with Nedd4 can be facilitated by an ERK-mediated phosphorylation. *J Biol Chem* 277:13539–13547

304. Shi H, Asher C, Yung Y, Kligman L, Reuveny E, Seger R, Garty H (2002) Casein kinase 2 specifically binds to and phosphorylates the carboxy termini of ENaC subunits. *Eur J Biochem* 269:4551–4558
305. Shi PP, Cao XR, Sweezer EM, Kinney TS, Williams NR, Husted RF, Nair R, Weiss RM, Williamson RA, Sigmund CD, Snyder PM, Staub O, Stokes JB, Yang B (2008) Salt-sensitive hypertension and cardiac hypertrophy in mice deficient in the ubiquitin ligase Nedd4-2. *Am J Physiol Renal Physiol* 295:F462–F470
306. Shigaev A, Asher C, Latter H, Garty H, Reuveny E (2000) Regulation of sgk by aldosterone and its effects on the epithelial Na⁺ channel. *Am J Physiol Renal Physiol* 278:F613–F619
307. Shimkets RA, Lifton R, Canessa CM (1998) In vivo phosphorylation of the epithelial sodium channel. *Proc Natl Acad Sci U S A* 95:3301–3305
308. Silver RB, Frindt G (1993) Functional identification of H-K-ATPase in intercalated cells of cortical collecting tubule. *Am J Physiol* 264:F259–F266
309. Simons K, Ikonen E (1997) Functional rafts in cell membranes. *Nature* 387:569–572
310. Snyder PM, Cheng C, Prince LS, Rogers JC, Welsh MJ (1998) Electrophysiological and biochemical evidence that DEG/ENaC cation channels are composed of nine subunits. *J Biol Chem* 273:681–684
311. Snyder PM, Olson DR, Thomas BC (2002) Serum and glucocorticoid-regulated kinase modulates Nedd4-2-mediated inhibition of the epithelial Na⁺ channel. *J Biol Chem* 277:5–8
312. Snyder PM, Olson DR, Kabra R, Zhou R, Steines JC (2004) cAMP and serum and glucocorticoid-inducible kinase (SGK) regulate the epithelial Na⁺ channel through convergent phosphorylation of Nedd4-2. *J Biol Chem* 279:45753–45758
313. Snyder PM (2005) Minireview: regulation of epithelial Na⁺ channel trafficking. *Endocrinology* 146:5079–5085
314. Song J, Hu X, Riaz S, Tiwari S, Wade JB, Ecelbarger CA (2006) Regulation of blood pressure, the epithelial sodium channel (ENaC), and other key renal sodium transporters by chronic insulin infusion in rats. *Am J Physiol Renal Physiol* 290:F1055–F1064
315. Soundararajan R, Zhang TT, Wang J, Vandewalle A, Pearce D (2005) A novel role for glucocorticoid-induced leucine zipper protein in epithelial sodium channel-mediated sodium transport. *J Biol Chem* 280:39970–39981
316. Soundararajan R, Wang J, Melters D, Pearce D (2007) Differential activities of glucocorticoid-induced leucine zipper protein isoforms. *J Biol Chem* 282:36303–36313
317. Staruschenko A, Pochynyuk O, Vandewalle A, Bugaj V, Stockand JD (2007) Acute regulation of the epithelial Na⁺ channel by phosphatidylinositide 3-OH kinase signaling in native collecting duct principal cells. *J Am Soc Nephrol* 18:1652–1661
318. Staub O, Rotin D (2006) Role of ubiquitylation in cellular membrane transport. *Physiol Rev* 86:669–707
319. Stutts MJ, Canessa CM, Olsen JC, Hamrick M, Cohn JA, Rossier BC, Boucher RC (1995) CFTR as a cAMP-dependent regulator of sodium channels. *Science* 269:847–850
320. Svenningsen P, Bistrup C, Friis UG, Bertog M, Haerteis S, Krueger B, Stubbe J, Jensen ON, Thiesson HC, Uehnholt TR, Jespersen B, Jensen BL, Korbmacher C, Skott O (2009) Plasmin in nephrotic urine activates the epithelial sodium channel. *J Am Soc Nephrol* 20:299–310
321. Tashiro K, Koyanagi I, Ohara I, Ito T, Saitoh A, Horikoshi S, Tomino Y (2004) Levels of urinary matrix metalloproteinase-9 (MMP-9) and renal injuries in patients with type 2 diabetic nephropathy. *J Clin Lab Anal* 18:206–210
322. Thomas CP, Itani OA (2004) New insights into epithelial sodium channel function in the kidney: site of action, regulation by ubiquitin ligases, serum- and glucocorticoid-inducible kinase and proteolysis. *Curr Opin Nephrol Hypertens* 13:541–548
323. Thomas G (2002) Furin at the cutting edge: from protein traffic to embryogenesis and disease. *Nat Rev Mol Cell Biol* 3:753–766
324. Tiwari S, Halagappa VK, Riaz S, Hu X, Ecelbarger CA (2007) Reduced expression of insulin receptors in the kidneys of insulin-resistant rats. *J Am Soc Nephrol* 18:2661–2671
325. Tiwari S, Nordquist L, Halagappa VK, Ecelbarger CA (2007) Trafficking of ENaC subunits in response to acute insulin in mouse kidney. *Am J Physiol Renal Physiol* 293:F178–F185
326. Tiwari S, Sharma N, Gill PS, Igarashi P, Kahn CR, Wade JB, Ecelbarger CM (2008) Impaired sodium excretion and increased blood pressure in mice with targeted deletion of renal epithelial insulin receptor. *Proc Natl Acad Sci U S A* 105:6469–6474
327. Todd-Turla KM, Rusvai E, Naray-Fejes-Toth A, Fejes-Toth G (1996) CFTR expression in cortical collecting duct cells. *Am J Physiol* 270:F237–F244
328. Tomita K, Pisano JJ, Knepper MA (1985) Control of sodium and potassium transport in the cortical collecting duct of the rat. Effects of bradykinin, vasopressin, and deoxycorticosterone. *J Clin Invest* 76:132–136
329. Tong Q, Gamper N, Medina JL, Shapiro MS, Stockand JD (2004) Direct activation of the epithelial Na⁺ channel by phosphatidylinositol 3, 4, 5-trisphosphate and phosphatidylinositol 3, 4-bisphosphate produced by phosphoinositide 3-OH kinase. *J Biol Chem* 279:22654–22663
330. Turnheim K (1991) Intrinsic regulation of apical sodium entry in epithelia. *Physiol Rev* 71:429–445
331. Vallet V, Chraïbi A, Gaeggeler HP, Horisberger JD, Rossier BC (1997) An epithelial serine protease activates the amiloride-sensitive sodium channel. *Nature* 389:607–610
332. Vallet V, Pfister C, Loffing J, Rossier BC (2002) Cell-surface expression of the channel activating protease xCAP-1 is required for activation of ENaC in the *Xenopus* oocyte. *J Am Soc Nephrol* 13:588–594
333. Vaziri ND, Gonzales EC, Shayestehfar B, Barton CH (1994) Plasma levels and urinary excretion of fibrinolytic and protease inhibitory proteins in nephrotic syndrome. *J Lab Clin Med* 124:118–124
334. Verlander JW, Moudy RM, Campbell WG, Cain BD, Wingo CS (2001) Immunohistochemical localization of H-K-ATPase α_2c -subunit in rabbit kidney. *Am J Physiol Renal Physiol* 281:F357–F365
335. Verrey F (1994) Antidiuretic hormone action in A6 cells: effect on apical Cl and Na conductances and synergism with aldosterone for NaCl reabsorption. *J Membr Biol* 138:65–76
336. Verrey F, Groscurth P, Bolliger U (1995) Cytoskeletal disruption in A6 kidney cells: impact on endo/exocytosis and NaCl transport regulation by antidiuretic hormone. *J Membr Biol* 145:193–204
337. Verrey F, Hummler E, Schild L, Rossier BC (2007) Mineralocorticoid action in the aldosterone-sensitive distal nephron. In: Alpern RJ, Hebert SC (eds) *Seldin and Giebisch's the kidney*. Elsevier, Amsterdam, pp 889–924
338. Verrey F, Fakitsas P, Adam G, Staub O (2008) Early transcriptional control of ENaC (de) ubiquitylation by aldosterone. *Kidney Int* 73:691–696
339. Vettor R, Mazzonetto P, Macor C, Scandellari C, Federspil G (1994) Effect of endogenous organic hyperinsulinaemia on blood pressure and serum triglycerides. *Eur J Clin Invest* 24:350–354
340. Vila-Carriles WH, Zhou ZH, Bubien JK, Fuller CM, Benos DJ (2007) Participation of the chaperone Hsc70 in the trafficking and functional expression of ASIC2 in glioma cells. *J Biol Chem* 282:34381–34391
341. Vio CP, Figueroa CD (1987) Evidence for a stimulatory effect of high potassium diet on renal kallikrein. *Kidney Int* 31:1327–1334

342. Volk T, Konstas AA, Bassalay P, Ehmke H, Korbmacher C (2004) Extracellular Na⁺ removal attenuates rundown of the epithelial Na⁺-channel (ENaC) by reducing the rate of channel retrieval. *Pflugers Arch* 447:884–894
343. Vuagniaux G, Vallet V, Jaeger NF, Pfister C, Bens M, Farman N, Courtois-Coutry N, Vandewalle A, Rossier BC, Hummler E (2000) Activation of the amiloride-sensitive epithelial sodium channel by the serine protease mCAP1 expressed in a mouse cortical collecting duct cell line. *J Am Soc Nephrol* 11:828–834
344. Vuagniaux G, Vallet V, Jaeger NF, Hummler E, Rossier BC (2002) Synergistic activation of ENaC by three membrane-bound channel-activating serine proteases (mCAP1, mCAP2, and mCAP3) and serum- and glucocorticoid-regulated kinase (Sgk1) in *Xenopus* oocytes. *J Gen Physiol* 120:191–201
345. Wagner CA, Devuyt O, Bourgeois S, Mohebbi N (2009) Regulated acid-base transport in the collecting duct. *Pflugers Arch* (in press)
346. Wakida N, Kitamura K, Tuyen DG, Maekawa A, Miyoshi T, Adachi M, Shiraishi N, Ko T, Ha V, Nonoguchi H, Tomita K (2006) Inhibition of prostaticin-induced ENaC activities by PN-1 and regulation of PN-1 expression by TGF- β 1 and aldosterone. *Kidney Int* 70:1432–1438
347. Waldmann R, Champigny G, Bassilana F, Voilley N, Lazdunski M (1995) Molecular cloning and functional expression of a novel amiloride-sensitive Na⁺ channel. *J Biol Chem* 270:27411–27414
348. Wang J, Barbry P, Maiyar AC, Rozansky DJ, Bhargava A, Leong M, Firestone GL, Pearce D (2001) SGK integrates insulin and mineralocorticoid regulation of epithelial sodium transport. *Am J Physiol Renal Physiol* 280:F303–F313
349. Wang J, Zhang ZR, Chou CF, Liang YY, Gu Y, Ma HP (2009) Cyclosporine stimulates the renal epithelial sodium channel by elevating cholesterol. *Am J Physiol Renal Physiol* 296:F284–F290
350. Wang SN, Lapage J, Hirschberg R (1999) Glomerular ultrafiltration of IGF-I may contribute to increased renal sodium retention in diabetic nephropathy. *J Lab Clin Med* 134:154–160
351. Wang T, Giebisch G (1996) Effects of angiotensin II on electrolyte transport in the early and late distal tubule in rat kidney. *Am J Physiol* 271:F143–F149
352. Wang WH, Giebisch G (2008) Regulation of potassium (K) handling in the renal collecting duct. *Pflugers Arch* (in press)
353. Weisz OA, Wang JM, Edinger RS, Johnson JP (2000) Non-coordinate regulation of endogenous epithelial sodium channel (ENaC) subunit expression at the apical membrane of A6 cells in response to various transporting conditions. *J Biol Chem* 275:39886–39893
354. West A, Blazer-Yost B (2005) Modulation of basal and peptide hormone-stimulated Na transport by membrane cholesterol content in the A6 epithelial cell line. *Cell Physiol Biochem* 16:263–270
355. Wielputz MO, Lee IH, Dinudom A, Boulkroun S, Farman N, Cook DI, Korbmacher C, Rauh R (2007) (NDRG2) stimulates amiloride-sensitive Na⁺ currents in *Xenopus laevis* oocytes and fisher rat thyroid cells. *J Biol Chem* 282:28264–28273
356. Wilson PD (1999) Cystic fibrosis transmembrane conductance regulator in the kidney: clues to its role? *Exp Nephrol* 7:284–289
357. Woolthead AM, Scott JW, Hardie DG, Baines DL (2005) Phenformin and 5-aminoimidazole-4-carboxamide-1- β -D-ribofuranoside (AICAR) activation of AMP-activated protein kinase inhibits transepithelial Na⁺ transport across H441 lung cells. *J Physiol* 566:781–792
358. Wulff P, Vallon V, Huang DY, Volkl H, Yu F, Richter K, Jansen M, Schlunz M, Klingel K, Löffing J, Kauselmann G, Bosl MR, Lang F, Kuhl D (2002) Impaired renal Na⁺ retention in the sgk1-knockout mouse. *J Clin Invest* 110:1263–1268
359. Xu BE, Stippec S, Chu PY, Lazrak A, Li XJ, Lee BH, English JM, Ortega B, Huang CL, Cobb MH (2005) WNK1 activates SGK1 to regulate the epithelial sodium channel. *Proc Natl Acad Sci U S A* 102:10315–10320
360. Xu BE, Stippec S, Lazrak A, Huang CL, Cobb MH (2005) WNK1 activates SGK1 by a phosphatidylinositol 3-kinase-dependent and non-catalytic mechanism. *J Biol Chem* 280:34218–34223
361. Xu JZ, Hall AE, Peterson LN, Bienkowski MJ, Eessalu TE, Hebert SC (1997) Localization of the ROMK protein on apical membranes of rat kidney nephron segments. *Am J Physiol* 273:F739–F748
362. Yagil C, Hubner N, Monti J, Schulz H, Sapojnikov M, Luft FC, Ganten D, Yagil Y (2005) Identification of hypertension-related genes through an integrated genomic-transcriptomic approach. *Circ Res* 96:617–625
363. Yamamura H, Ugawa S, Ueda T, Nagao M, Shimada S (2004) Protons activate the delta-subunit of the epithelial Na⁺ channel in humans. *J Biol Chem* 279:12529–12534
364. Yang LM, Rinke R, Korbmacher C (2006) Stimulation of the epithelial sodium channel (ENaC) by cAMP involves putative ERK phosphorylation sites in the C termini of the channel's beta- and gamma-subunit. *J Biol Chem* 281:9859–9868
365. Yu JX, Chao L, Chao J (1994) Prostaticin is a novel human serine proteinase from seminal fluid. Purification, tissue distribution, and localization in prostate gland. *J Biol Chem* 269:18843–18848
366. Yue G, Malik B, Eaton DC (2002) Phosphatidylinositol 4, 5-bisphosphate (PIP₂) stimulates epithelial sodium channel activity in A6 cells. *J Biol Chem* 277:11965–11969
367. Zhai XY, Thomsen JS, Birn H, Kristoffersen IB, Andreassen A, Christensen EI (2006) Three-dimensional reconstruction of the mouse nephron. *J Am Soc Nephrol* 17:77–88
368. Zhang W, Xia X, Reisenauer MR, Rieg T, Lang F, Kuhl D, Vallon V, Kone BC (2007) Aldosterone-induced Sgk1 relieves Dot1a-Af9-mediated transcriptional repression of epithelial Na⁺ channel alpha. *J Clin Invest* 117:773–783
369. Zhang YH, Alvarez de la Rosa D, Canessa CM, Hayslett JP (2005) Insulin-induced phosphorylation of ENaC correlates with increased sodium channel function in A6 cells. *Am J Physiol Cell Physiol* 288:C141–C147
370. Zhou Z, Treis D, Schubert SC, Harm M, Schatterny J, Hirtz S, Duerr J, Boucher RC, Mall MA (2008) Preventive but not late amiloride therapy reduces morbidity and mortality of lung disease in β ENaC-overexpressing mice. *Am J Respir Crit Care Med* 178:1245–1256
371. Zuber AM, Singer D, Penninger JM, Rossier BC, Firsov D (2007) Increased renal responsiveness to vasopressin and enhanced V2 receptor signaling in RGS2^{-/-} mice. *J Am Soc Nephrol* 18:1672–1678