

Recurrent *FXVD2* p.Gly41Arg mutation in patients with isolated dominant hypomagnesaemia

Jeroen H.F. de Baaij^{1,*}, Eiske M. Dorresteyn^{2,*}, Eric A.M. Hennekam³, Erik-Jan Kamsteeg⁴, Rowdy Meijer⁴, Karin Dahan⁵, Michelle Muller⁶, Marinus A. van den Dorpel⁷, René J.M. Bindels¹, Joost G.J. Hoenderop¹, Olivier Devuyst⁸ and Nine V.A.M. Knoers³

¹Department of Physiology, Radboud Institute for Molecular Life Sciences, Radboud University Medical Center, Nijmegen, The Netherlands, ²Pediatric Nephrology, Erasmus MC, Sophia Childrens Hospital, Rotterdam, The Netherlands, ³Department of Medical Genetics, University Medical Centre Utrecht, Utrecht 3508 AB, The Netherlands, ⁴Department of Human Genetics, Radboud Institute for Molecular Life Sciences, Radboud University Medical Center, Nijmegen, The Netherlands, ⁵Institut de Génétique et de Pathologie, IPG, Gosselies, Belgium, ⁶Centre Hospitalier Peltzer-La Tourelle, Verviers, Belgium, ⁷Department of Internal Medicine, Maasstad Hospital, Rotterdam, The Netherlands and ⁸Institute of Physiology, ZIHP, University of Zurich, Zürich, Switzerland

Correspondence and offprint requests to: Nine V.A.M. Knoers; E-mail: V.V.A.Knoers@umcutrecht.nl

*These authors contributed equally to this work.

ABSTRACT

Background. Magnesium (Mg^{2+}) is an essential ion for cell growth, neuroplasticity and muscle contraction. Blood Mg^{2+} levels <0.7 mmol/L may cause a heterogeneous clinical phenotype, including muscle cramps and epilepsy and disturbances in K^+ and Ca^{2+} homeostasis. Over the last decade, the genetic origin of several familial forms of hypomagnesaemia has been found. In 2000, mutations in *FXVD2*, encoding the γ -subunit of the $Na^+-K^+-ATPase$, were identified to cause isolated dominant hypomagnesaemia (IDH) in a large Dutch family suffering from hypomagnesaemia, hypocalciuria and chondrocalcinosis. However, no additional patients have been identified since then. **Methods.** Here, two families with hypomagnesaemia and hypocalciuria were screened for mutations in the *FXVD2* gene. Moreover, the patients were clinically and genetically characterized.

Results. We report a p.Gly41Arg *FXVD2* mutation in two families with hypomagnesaemia and hypocalciuria. Interestingly, this is the same mutation as was described in the original study. As in the initial family, several patients suffered from muscle cramps, chondrocalcinosis and epilepsy. Haplotype analysis revealed an overlapping haplotype in all families, suggesting a founder effect.

Conclusions. The recurrent p.Gly41Arg *FXVD2* mutation in two new families with IDH confirms that *FXVD2* mutation causes hypomagnesaemia. Until now, no other *FXVD2* mutations have been reported which could indicate that other

FXVD2 mutations will not cause hypomagnesaemia or are embryonically lethal.

Keywords: distal convoluted tubule, *FXVD2*, kidney, magnesium, $Na^+-K^+-ATPase$

INTRODUCTION

Hypomagnesaemia is a common electrolyte imbalance resulting in muscle cramps, muscle weakness and cardiac arrhythmias [1]. The use of certain types of drugs including calcineurin inhibitors, proton-pump inhibitors and diuretics may cause low serum magnesium (Mg^{2+}) levels [2]. In a small percentage of patients, the Mg^{2+} disturbance is of genetic origin [3]. Hypomagnesaemia-causing mutations often affect Mg^{2+} transport processes operating in the renal distal convoluted tubule (DCT). The final urinary Mg^{2+} excretion is determined in the DCT, since Mg^{2+} reabsorption does not take place beyond that nephron segment [3]. As a consequence, patients with reduced Mg^{2+} uptake in DCT have renal Mg^{2+} wasting.

In 2000, we identified a c.115G>A (p.Gly41Arg) mutation in the *FXVD2* domain containing ion transport regulator 2 gene (*FXVD2*) causative for isolated dominant hypomagnesaemia (IDH, [MIM 154020]) in a large Dutch family [4–6]. Although originally described as two families, haplotype analysis revealed a 10.5 cM overlapping region suggesting a founder effect [4]. Patients in this family had normal urinary Mg^{2+} values, but showed lowered urinary Ca^{2+} excretion and suffered from

episodes of convulsions [7]. Some patients developed symptoms of chondrocalcinosis, related to chronic hypomagnesaemia [8].

FXVD2 encodes the γ -subunit of the Na^+/K^+ -ATPase and is involved in stabilization of the α -subunit of that complex [9]. Moreover, the γ -subunit decreases the affinity of the Na^+/K^+ -ATPase for Na^+ and K^+ and increases the affinity for ATP [10]. The p.Gly41Arg mutation causes a trafficking defect preventing the γ -subunit to reach the basolateral membrane [5, 11]. In the kidney, two splice variants of *FXVD2* are expressed. *FXVD2a* is expressed strongly in the thick ascending limb and proximal tubule and only discretely in the DCT [12]. In contrast, *FXVD2b* expression is restricted to the basolateral membrane of the DCT and connecting tubule. In addition, HNF-1- β can activate *FXVD2a* transcription, and mutations in the HNF-1- β transcription factor gene (*HNF1B*) cause hypomagnesaemia [13–15]. Given that each *FXVD2* splice variant differentially modifies Na^+/K^+ -ATPase activity, it has been hypothesized that the ratio between *FXVD2a* and *FXVD2b* expression may determine Na^+/K^+ -ATPase activity. However, the mechanism by which changes in basolateral *FXVD2* expression affects renal Mg^{2+} reabsorption remains to be elucidated.

Since the report of the original family in 2000, new families with *FXVD2* mutations have not been described. As a result, the relevance of *FXVD2* mutations for hypomagnesaemia has been questioned over the years. For the first time since the initial report, we now present two new families harbouring the same p.Glu41Arg mutation in *FXVD2*. To provide further insight into the role of this mutation in hypomagnesaemia, full molecular and genealogical analyses were performed. Furthermore, we aimed to increase the current phenotypic knowledge and describe the clinical presentations and treatment of patients with *FXVD2* mutations.

MATERIALS AND METHODS

Patients

All patients in this study were diagnosed with hypomagnesaemia and were screened by the DNA diagnostics department of the Radboudumc Nijmegen for hypomagnesaemia-causing mutations. Informed consent for participation in research was obtained in accordance with Institutional Review Board

guidelines. Serum and urine electrolytes were determined by general laboratory screenings. Laboratory findings of all patients are presented in Table 1.

Mutation analysis

Extraction of DNA from whole blood was performed using standard protocols. *FXVD2* mutation screening was performed using polymerase chain reaction (PCR) primers designed on the coding sequence of the human *FXVD2* gene (NM_001680.4, NM_021603.3) including exon–intron boundaries [5]. Amplified sequences were separated on agarose gel by electrophoresis and directly Sanger sequenced according to standard methods on a 3730 Sequence Analyzer (Applied Biosystems). Mutation nomenclature is according to HGVS using NM_001680.4 as a reference sequence.

Haplotype analysis

Microsatellite markers D11S4092, D11S4127, D11S939, D11S1356 and D11S4195 encompassing the *FXVD2* gene on chromosome 11q23 were amplified by PCR using fluorescently labelled primers. PCR products are denatured and analysed on a 3730 Sequence Analyzer (Applied Biosystems).

Genealogy study

In-depth genealogical analysis was performed to identify common ancestors of *FXVD2* patients. Lists of descendants from index patients were compiled and pedigrees were generated using Dutch and Belgian civil registers and church books.

RESULTS

Recurrent *FXVD2* mutation in patients with hypomagnesaemia

In two families with hypomagnesaemia, a c.115G>A mutation in the *FXVD2* gene was identified by mutation analysis. The mutation results in a p.Gly41Arg change at amino acid level. Interestingly, the c.115G>A mutation has previously been reported in a large Dutch family in 2000 and no other *FXVD2* mutations have been found since [5].

FXVD2 mutation in a Dutch family

The first family is a Dutch family with three affected family members (Figure 1). The proband (Figure 1, NL II.1) was discovered suffering from hypokalaemia and hypomagnesaemia during admission for lung embolism at the age of 34 (Table 1).

Table 1. Laboratory values of affected individuals

Patient	NL II.1	NL III.1	NL III.2	B II.2	B III.2	B IV.1
Serum magnesium (mmol/L, nl 0.7–0.95)	0.38	0.45	0.45	0.56	0.35	0.5
Serum potassium (mmol/L, nl 3.5–5.1)	3.3	4.2	3.8	4.0	3.0	3.6
Serum bicarbonate (mmol/L, nl 21–27)	29.6	24	22	26	27	31
Serum sodium (mmol/L, nl 135–145)		138	142	142	137	139
eGFR (mL/1.73 mL/min, nl >90)	123	133	124	43	125	85
Urinary magnesium excretion/day (mmol/day, nl 3.0–5.0)	8.9			8.1	10.6	8.4
Fractional magnesium excretion (% nl <4%)	8.3	11.9	6			
Urinary calcium excretion/day (mmol/day, nl 1.5–7.5)	1.3			0.8	1.52	0.3
Urinary calc/creat (mmol/mmol, nl <0.7)	0.08	0.04	0.05			
Urinary sodium excretion/day (mmol/day, nl 40–220)			119	358	218	147

1 meq Mg = 0.5 mmol Mg = 12.3 mg Mg. 1 meq Ca = 0.5 mmol Ca = 20.5 mg Ca (1 mmol = 41 mg) nl. = normal (reference value).

Note: Values in subject B II.2 are those recorded under supplementation, and not a presentation.

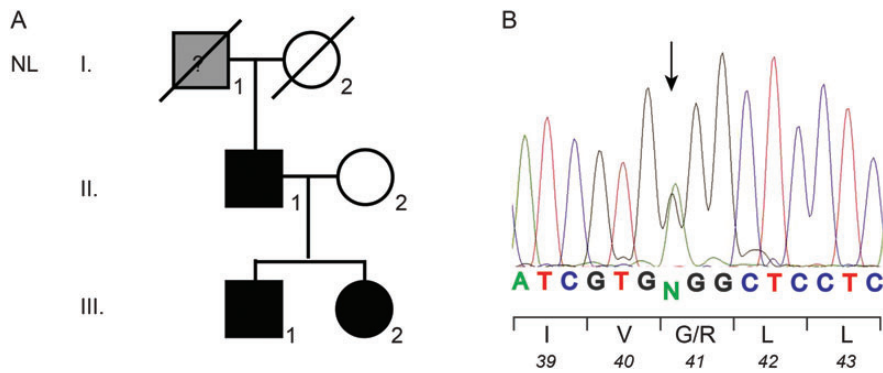


FIGURE 1: Family with isolated hypomagnesaemia from the Netherlands. (A) Pedigree of the Dutch family with hypomagnesaemia. Black-filled symbols denote affected and genetically confirmed family members, grey symbols denote potentially affected family members. (B) Mutation analysis chromatogram of the proband (NL II.1). The mutation is indicated by an arrow and the nucleotide changes and resulting effect at the amino acid level are shown.

He had a chronic history of muscle cramps and fatigue and reported a spacious fluid intake. He is an only child and his parents are deceased. He reported no relevant symptoms of his father (Figure 1, NL I.1) besides a spacious fluid intake and recurrent miscarriages of his mother (Figure 1, NL I.2). The proband is currently treated with Mg^{2+} supplements stabilizing the serum Mg^{2+} and K^+ levels at ± 0.45 and ± 3.4 mmol/L, respectively.

Hereafter, his two children were admitted to the outpatient clinic for evaluation because of muscle cramps. They both showed hypomagnesaemia. The daughter (Figure 1, NL III.1), 9 years old, reported muscle cramps and uncertainty about keeping balance, without falling. His son (Figure 1, NL III.2), 7 years old, reported an increased fluid intake and nightly muscle cramps and is known with an attention deficit disorder. Both children had a normal growth pattern, normal blood pressure, no dysmorphic features and unremarkable renal ultrasound and X-ray of the hand. Laboratory evaluation revealed isolated hypomagnesaemia with hypermagnesuria and hypocalciuria (with normal serum creatinine) (Table 1). Because the dominant inheritance of hypomagnesaemia in this family was not compatible with Gitelman syndrome, genetic analysis was performed for diagnostic purposes. No mutations were found in the *HNF1B* and *SLC12A3* genes. A heterozygous missense mutation in the *FXD2* gene [c.121G>A (p.Gly41Arg)] was found in all three affected individuals. The children are free of symptoms with Mg^{2+} supplementation three times a day, achieving serum Mg^{2+} and K^+ concentrations in the low-normal range.

FXD2 mutation in a Belgian family

The second family originates from Belgium. The proband is a 67-year-old man admitted for a work-up of hypokalaemia and hypomagnesaemia (Figure 2, B II.2). Hypomagnesaemia and hypokalaemia were first discovered at age 44, during a blood electrolyte analysis following an episode of tetanic cramps. Magnesium and potassium supplements were then initiated, with variable compliance. The patient reported chronic fatigue, with general weakness, dysesthesia of the face and hands, and frequent cramps of the lower limbs, which generated difficulties in walking. He complained about continuous thirst and nocturia. Blood pressure was 180/85 mmHg (supine) and 150/90 mmHg (standing). The

clinical examination was otherwise unremarkable. The patient had chondrocalcinosis evidenced by X-ray of the knees.

Blood and urine analyses revealed renal failure (plasma creatinine 1.62 mg/dL, eGFR 43 mL/min/m²), with hypomagnesaemia (all serum electrolytes within normal range) hypermagnesuria and hypocalciuria (Table 1). Facing the chronic history of hypomagnesaemia with inappropriate urinary Mg^{2+} loss and hypocalciuria, Gitelman syndrome was suspected. Genetic testing of *SLC12A3*, *CLCNKB* and *HNF1B* (sequencing of all exons, exon–intron boundaries plus multiplex ligation-dependent probe amplification) was negative.

The patient reported that his mother (Figure 2, B I.2, deceased at age 62) was known for Mg^{2+} problems. She suffered from chronic fatigue and articulation problems. In addition, she took Mg^{2+} supplements, as well as the proband's daughter (B III.2) and granddaughter (B IV.1).

The daughter of the proband (Figure 2, B III.2), aged 41 years, complained of fatigue since childhood, with limited physical activity. She had cramps and dysesthesia of the face and hands. She was diagnosed with hypomagnesaemia as a young adult and has taken Mg^{2+} supplements since then. Plasma analyses revealed persistent hypomagnesaemia and hypokalaemia, with normal HCO_3^- and normal renal function. The urinary Mg^{2+} loss was inappropriately high (Table 1).

The granddaughter of the proband (B IV.1), aged 16 years, experienced two epileptic crises at 5 and 15 years of age and complained of chronic fatigue. The neurological work-up was negative but hypomagnesaemia and hypokalaemia were noticed, with inappropriate urinary Mg^{2+} loss and hypocalciuria (Table 1). Renal function was normal.

Over the years, plasma Mg^{2+} remained, in the Belgian family, below or just at the low-normal values despite supplementation. Follow-up K^+ levels were improved, with levels of 4.5 mmol/L (B II.2), 3.75 mmol/L (B III.2) and 3.64 mmol/L (B IV.1) observed 1 year after first contact (Table 1). These values, which were all within normal limits, were however variable and not always confirmed during follow-up in other institutions.

Common haplotype bearing the FXD2 mutation

To examine whether the newly identified families share the same haplotype as the original family, marker analysis was

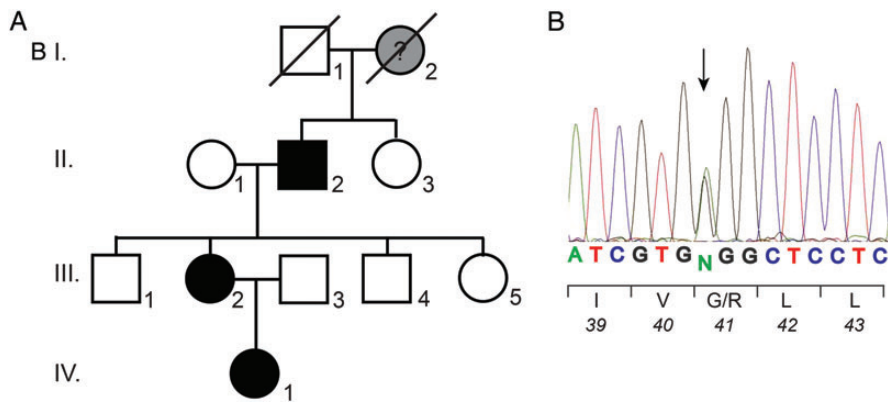


FIGURE 2: Family with isolated hypomagnesaemia from Belgium. (A) Pedigree of the Belgian family with hypomagnesaemia. Blackened symbols denote affected and genetically confirmed family members, grey symbols denote potentially affected family members. (B) Mutation analysis chromatogram of the proband (B II.2). The mutation is indicated by an arrow and the nucleotide changes and resulting effect at the amino acid level are shown.

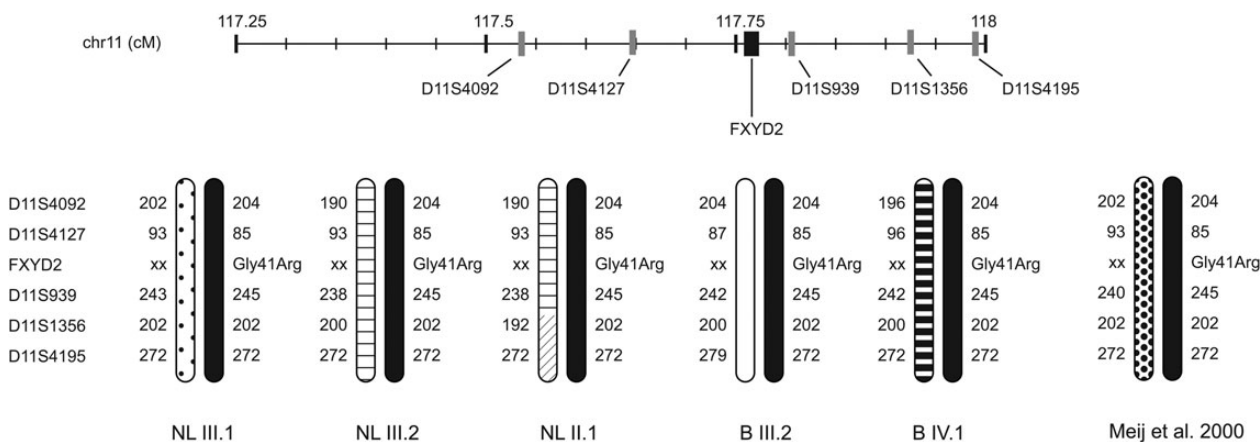


FIGURE 3: Haplotype analysis of patients with *FXYD2* mutations. STS marker analysis of patients with *FXYD2* mutations with markers from the chromosome 11q23 (Chr11:117 250 000–118 000 000, hg38). All families share the same haplotype.

initiated. Five markers encompassing the *FXYD2* gene were selected: D11S4092, D11S4127, D11S939, D11S1356 and D11S4195 (Figure 3). For this analysis, relatives from the original family were included. Indeed, patients from all three families share the same haplotype, suggesting that the families are related through a common ancestor. Genealogical analysis did not result in the identification of this common ancestor. Although the Belgian family was shown to originate from the same geographical region (surroundings of Liège, Belgium) as the family described in the original paper from 2000, no common ancestor was found in 9–12 generations back.

DISCUSSION

In this study, a c.115G>A (p.Gly41Arg) mutation in *FXYD2* was identified in two families with hereditary hypomagnesaemia. Importantly, these are the first new patients reported since 2000 confirming that *FXYD2* mutations cause hypomagnesaemia. In both patient families, the same c.115G>A

mutation was detected that was previously described in a large Dutch family. All three families shared the same haplotype, suggesting a founder effect.

Although the genetic cause was only found in 2000 [4], the first patients with mutations in the *FXYD2* gene were clinically evaluated in 1987 [16, 17]. Twenty-two individuals harbouring *FXYD2* mutations showed IDH, hypocalciuria and occasionally also hypomagnesaemia-associated chondrocalcinosis was detected. Since the first identification of the *FXYD2* p.Gly41Arg mutation in 2000 [15], no other *FXYD2* mutations have been reported in the literature or detected in our diagnostic testing facility. Therefore, the role of *FXYD2* in hypomagnesaemia has been questioned. The identification of the new Dutch and Belgian families with *FXYD2* mutations confirms its importance in renal Mg^{2+} handling. Moreover, several regulatory factors of *FXYD2* have additionally been implicated in Mg^{2+} homeostasis. The transcription of *FXYD2* is induced by HNF-1- β [14] and patients with *HNF1B* mutations also develop hypomagnesaemia (Renal Cyst and Diabetes syndrome, [MIM 137920]) [13]. Recently, pterin-4- α -carbinolamine dehydratase (encoded by *PCBD1*) was identified as an additional

transcriptional regulator of *FXVD2* and again patients with *PCBD1* mutations showed hypomagnesaemia [MIM 126090] [15]. Although the exact molecular mechanism by which the *PCBD1-HNF1B-FXVD2* axis regulates renal Mg^{2+} reabsorption is still unclear, the effects of *FXVD2*-encoded γ -subunit on Na^+-K^+ -ATPase activity have been well established. The γ -subunit increases the affinity of the Na^+-K^+ -ATPase for ATP and decreases the affinity for Na^+ and K^+ [10]. The p. Gly41 residue is located central in the α -helix that forms the γ -subunit (PDB: 2mkv). Mutation of the small glycine residue in the larger arginine residue may disrupt the structure of the γ -subunit. To date, other *FXVD2* mutations have not been identified, suggesting that other *FXVD2* mutations may not cause hypomagnesaemia. Alternatively, the importance of γ -subunit for Na^+-K^+ -ATPase activity could suggest that more severe mutations in *FXVD2* render a dysfunctional Na^+-K^+ -ATPase and therefore may be embryonic lethal.

In the new families from the Netherlands and Belgium, both hypomagnesaemia and hypocalciuria could be confirmed in all patients. Of note, hypomagnesaemia was associated with moderate hypokalaemia in the two patients with lowest serum Mg^{2+} values. Hypokalaemia is often secondary to hypomagnesaemia [5]. Hypomagnesaemia results in decreased intracellular Mg^{2+} levels in the distal part of the nephron, possibly due to the fact the Mg^{2+} normally inhibits the renal outer medullary K^+ channel minimizing renal K^+ secretion. In addition, several patients reported high fluid intake and thirst. These manifestations are typically encountered in patients suffering from chronic hypokalaemia, as described for instance in Gitelman syndrome [18, 19]. Hypokalaemia has been shown to induce a down-regulation of AQP2 water channels in the collecting duct, impairing the urinary concentration [20]. In turn, this could stimulate compensatory thirst, in order to maintain the plasma osmolality and sodium levels.

Other clinical manifestations of the patients harbouring *FXVD2* mutations include renal failure (chronic kidney disease stage 3) (BE II.2), but other factors in the development of renal failure cannot be excluded (e.g. analgesics and NSAID for chronic pain due to chondrocalcinosis). All affected family members reported muscle cramps. In addition, one patient suffered from episodes of epilepsy (B IV.1). Moreover, chondrocalcinosis was detected in the proband of the Belgian family (B II.2). Both epilepsy and chondrocalcinosis were observed in the other patients from the original family [13, 14], and are classical complications of hypomagnesaemia. In the Dutch family, daily supplementation using $Mg(OH)_2$ achieved plasma Mg^{2+} levels in the low-normal range.

Genealogical analysis, going back to 1700 of all three patients' families with the similar *FXVD2* mutation did not result in the identification of a common ancestor. Interestingly, the ancestry of two families could be traced back to the same geographical area near Liège in Belgium. If indeed the common ancestor lived before 1700, the dominant inheritance of IDH suggests that more, still unidentified, descendants of this common ancestor could live in the Netherlands and Belgium. However, given the variety of this phenotype and the non-specificity of the symptoms these patients often remain undetected. Increasing the awareness of this syndrome may help

identifying more patients with *FXVD2* mutations and allow proper treatment by Mg^{2+} supplementation.

In conclusion, this study reports two new families with IDH caused by *FXVD2* mutations. Further insight in the clinical spectrum associated with genetic Mg^{2+} disorders can provide useful information for clinicians to make an early differential diagnosis. *FXVD2* mutations should be considered in patients with hypomagnesaemia and hypocalciuria.

ACKNOWLEDGEMENTS

This work was supported by grants from the Netherlands Organization for Scientific Research (ZonMw 9120.8026, NWO ALW 818.02.001) and the EURENomics project from the European Union seventh Framework Programme (FP7/2007-2013, agreement nu 305608). Action de Recherche Concertée (ARC10/15-029, Communauté Française de Belgique); the FNRS and FRSM; Inter-University Attraction Pole (IUAP, Belgium Federal Government); the NCCR Kidney.CH programme (Swiss National Science Foundation); the Gebert Ruff Stiftung (Project GRS-038/12) and the Swiss National Science Foundation 310030-146490.

CONFLICT OF INTEREST STATEMENT

None declared.

REFERENCES

- Martin KJ, González EA, Slatopolsky E. Clinical consequences and management of hypomagnesemia. *J Am Soc Nephrol* 2009; 20: 2291–2295
- Lameris AL, Monnens LA, Bindels RJ *et al.* Drug-induced alterations in Mg^{2+} homeostasis. *Clin Sci (Lond)* 2012; 123: 1–14
- de Baaij JHF, Hoenderop JGJ, Bindels RJM. Regulation of magnesium balance: lessons learned from human genetic disease. *Clin Kidney J* 2012; 5 (Suppl 1): i15–i24
- Meij IC, Saar K, van den Heuvel LP *et al.* Hereditary isolated renal magnesium loss maps to chromosome 11q23. *Am J Hum Genet* 1999; 64: 180–188
- Meij IC, Koenderink JB, van Bokhoven H *et al.* Dominant isolated renal magnesium loss is caused by misrouting of the $Na(+),K(+)$ -ATPase gamma-subunit. *Nat Genet* 2000; 26: 265–266
- Meij IC, Koenderink JB, De Jong JC *et al.* Dominant isolated renal magnesium loss is caused by misrouting of the Na^+,K^+ -ATPase gamma-subunit. *Ann NY Acad Sci* 2003; 986: 437–443
- Geven WB, Monnens LA, Willems HL *et al.* Renal magnesium wasting in two families with autosomal dominant inheritance. *Kidney Int* 1987; 31: 1140–1144
- Richette P, Ayoub G, Lahalle S *et al.* Hypomagnesemia associated with chondrocalcinosis: a cross-sectional study. *Arthritis Rheum* 2007; 57: 1496–1501
- Mishra NK, Peleg Y, Cirri E *et al.* FXVD proteins stabilize Na,K -ATPase: amplification of specific phosphatidylserine-protein interactions. *J Biol Chem* 2011; 286: 9699–9712
- Arystarkhova E, Sweadner KJ. Splice variants of the gamma subunit (FXVD2) and their significance in regulation of the Na, K -ATPase in kidney. *J Bioenerg Biomembr* 2005; 37: 381–386
- Cairo ER, Friedrich T, Swarts HG *et al.* Impaired routing of wild type FXVD2 after oligomerisation with FXVD2-G41R might explain the dominant nature of renal hypomagnesemia. *Biochim Biophys Acta* 2008; 1778: 398–404

12. Arystarkhova E, Wetzel RK, Sweadner KJ. Distribution and oligomeric association of splice forms of Na(+)-K(+)-ATPase regulatory gamma-subunit in rat kidney. *Am J Physiol Renal Physiol* 2002; 282: F393–F407
13. Adalat S, Woolf AS, Johnstone KA *et al.* HNF1B mutations associate with hypomagnesemia and renal magnesium wasting. *J Am Soc Nephrol* 2009; 20: 1123–1131
14. Ferre S, Veenstra GJ, Bouwmeester R *et al.* HNF-1B specifically regulates the transcription of the gamma-subunit of the Na⁺/K⁺-ATPase. *Biochem Biophys Res Commun* 2011; 404: 284–290
15. Ferre S, de Baaij JH, Ferreira P *et al.* Mutations in PCBD1 cause hypomagnesemia and renal magnesium wasting. *J Am Soc Nephrol* 2014; 25: 574–586
16. Yang L, Frindt G, Palmer LG. Magnesium modulates ROMK channel-mediated potassium secretion. *J Am Soc Nephrol* 2010; 21: 2109–2116
17. Huang CL, Kuo E. Mechanism of hypokalemia in magnesium deficiency. *J Am Soc Nephrol* 2007; 18: 2649–2652
18. Devuyst O, Konrad M, Jeunemaitre X. Tubular disorders of electrolyte regulation. In: Avner ED, Harmon WE, Niaudet P, Yoshikawa N (eds), *Pediatric Nephrology*, 6th edn. New York: Springer, 2009, pp. 929–978.
19. Riveira-Munoz E, Chang Q, Godefroid N *et al.* Transcriptional and functional analyses of *SLC12A3* mutations: new clues for the pathogenesis of Gitelman's syndrome. *J Am Soc Nephrol* 2007; 18: 1271–1283
20. Marples D, Frøkiaer J, Dørup J *et al.* Hypokalemia-induced downregulation of aquaporin-2 water channel expression in rat kidney medulla and cortex. *J Clin Invest* 1996; 97: 1960–1968

Received for publication: 22.9.2014; Accepted in revised form: 15.12.2014

Nephrol Dial Transplant (2015) 30: 957–969
doi: 10.1093/ndt/gfv015
Advance Access publication 1 February 2015

Protective role of cyclosporine A and minocycline on mitochondrial disequilibrium-related podocyte injury and proteinuria occurrence induced by adriamycin

Na Guan^{1,*}, Ya-Li Ren^{2,*}, Xiao-Ya Liu¹, Ying Zhang³, Pei Pei³, Sai-Nan Zhu⁴ and Qingfeng Fan^{1,5,*}

¹Department of Pediatrics, Peking University First Hospital, Beijing 100034, China, ²Department of Electron Microscopy, Peking University First Hospital, Beijing 100034, China, ³Department of Central Laboratory, Peking University First Hospital, Beijing 100034, China, ⁴Department of Biostatistics, Peking University First Hospital, Beijing 100034, China and ⁵Present address: Renal-Electrolyte and Hypertension Division, Perelman School of Medicine, University of Pennsylvania, Philadelphia, PA 19104, USA

Correspondence and offprint requests to: Na Guan; E-mail: guanna@163.com

*These authors contributed equally to this work.

ABSTRACT

Background. Dysfunction of mitochondria is involved in podocyte injury in some kidney diseases, but the relationship between abnormal mitochondrial morphology and podocyte injury as well as the underlying mechanism is still unclear. This study aims to investigate dynamic changes of mitochondrial morphology and the potential molecular events in an adriamycin (ADR)-induced podocyte injury model.

Methods. Podocyte apoptosis was evaluated by annexin V assay. Podocyte mitochondrial membrane potential (MMP) was measured with MitoCapture kit. Double staining was used to show the distribution changes of mitochondria and actin filament as well as mitofusin proteins and podocin. Mitochondrial shape descriptors were obtained using analySIS

Image system. Effects of cyclosporine A (CsA) or minocycline (Mcy) on mitochondrial morphology were explored in ADR-induced nephropathy rats.

Results. ADR caused podocyte damage displaying as induction of cellular apoptosis and increase of activated caspase 3 and cytochrome *c*. The MMP level was decreased remarkably in ADR-treated podocytes. Mitochondrial morphological changes induced by ADR occurred rapidly from large and ellipsoid shape to the small, long and irregular. ADR significantly decreased surface area, perimeter and circularity, while increasing aspect ratio of mitochondria. In addition, mitochondria number transiently increased at 6 h following ADR application. Mitochondria intensity was increased along with punctate mitochondria formation, which co-localized with polymerized actin cytoskeleton in ADR podocytes. In ADR-induced nephropathy rats, 24-h proteinuria was decreased significantly by CsA or