

OBSTETRICS

Can remifentanil use in obstetrics be improved by optimal patient-controlled analgesia bolus timing?

B. Rehberg^{1*}, N. Wickboldt^{1,2}, C. Juillet³ and G. Savoldelli¹

¹ Service d'Anesthésiologie, Hôpitaux Universitaires de Genève et Faculté de médecine, Université de Genève, Rue Gabrielle-Perret-Gentil 4, CH-1211 Genève 14, Switzerland

² Department of Adult Intensive Care Medicine at Royal London Hospital, Barts Health NHS Trust, Whitechapel Road, London E1 1BB, UK

³ Département de médecine et des urgences, Hôpital neuchâtelois, Neuchâtel, Switzerland

* Corresponding author. E-mail: benno.rehberg-klug@hcuge.ch

Editor's key points

- Patient-controlled remifentanil boluses may have a role in the management of labour pain.
- Ideally, peak levels of remifentanil should coincide with maximum uterine contractions.
- This study used quantifying contraction strength to improve modelling of remifentanil concentrations.
- It was not possible to coordinate peak remifentanil concentrations with contraction strength.
- Safe use of remifentanil boluses in obstetric pain management will still require careful clinical monitoring.

Background. The safety of patient-controlled i.v. analgesia (PCA) with remifentanil for obstetrical analgesia remains a matter of concern. The efficacy of remifentanil bolus application, that is, the coincidence between pain and remifentanil effect-site concentration, may be improved by forecasting contractions, but it is not known whether such a technique would also improve safety.

Methods. We recorded pain intensity during labour continuously using a handheld dynamometer in 43 parturients. Using these data, we compared different models in their ability to predict future contractions. In addition, we modelled remifentanil effect-site concentration using three simulated modes of bolus administration, with and without prediction of future contractions.

Results. The average duration of pain during contractions recorded by the dynamometer was 45 [14 standard deviation (SD)] s. The time interval between painful contractions was highly variable, with a mean of 151 (31 SD) s during the first and 154 (52 SD) s during the second recording. Using a simple algorithm (three-point moving average), the SD of the difference between predicted and observed inter-contraction intervals can be reduced from 0.95 to 0.79 min. However, the coincidence between remifentanil concentration and pain during contraction is not substantially improved when using these models to guide remifentanil bolus application.

Conclusions. Because of the large variability of inter-contraction intervals, the use of prediction models will not influence the mean remifentanil concentration in-between contractions. Using models predicting future contractions to improve the timing of remifentanil PCA bolus administration will not diminish the need of continuous clinical surveillance and other safety measures.

Keywords: analgesia, obstetrical; analgesia, patient-controlled; forecasting; pharmacokinetics; remifentanil; safety

Accepted for publication: 18 August 2014

The use of remifentanil for analgesia during labour has become increasingly popular in recent years.^{1–3} However, as documented by several case reports,^{4–7} serious side-effects do exist, and therefore, studies looking at the optimization of the efficacy and safety of remifentanil patient-controlled analgesia (PCA) during labour are needed.

In theory, the efficacy of remifentanil application during labour will be determined by the effect-site concentration of remifentanil reached during a contraction. An optimal effect would be achieved if the remifentanil concentration is sufficiently high to be effectively analgesic during the total duration

of pain during a contraction. On the contrary, the safety of remifentanil use during labour will be theoretically determined by the remifentanil effect-site concentration in-between two painful contractions, inducing respiratory depression. Thus, an optimal remifentanil application during labour would achieve high ('effective') remifentanil concentrations during each painful contraction and low ('safe') concentrations in between painful contractions.

With standard PCA systems, a bolus is demanded by the parturient at the beginning of the pain felt with a contraction. This way, peak remifentanil concentration will not be optimally

timed. At the beginning of the painful contraction, remifentanyl concentration is still insufficient to alleviate the pain, whereas it will be still high after the end of the pain, inducing respiratory depression. Several attempts have already been made to improve the use of remifentanyl during labour by modifying the bolus application^{8–9} or forecasting future contractions.¹⁰ The latter solution appears to be promising, since a remifentanyl bolus may be delivered just before the beginning of a contraction, allowing peak remifentanyl concentration to coincide with peak pain during the contraction.

To our knowledge, no study has until now attempted to compare the timing of pain during contractions and the remifentanyl concentrations achieved with either standard bolus application at the beginning of the pain sensation or with optimized bolus delivery by prediction before the start of a contraction. Such a comparison would allow a better understanding of efficacy and safety of remifentanyl use during labour.

Our study included an experimental part (clinical observation in the labour ward) and a mathematical modelling part. The study had three objectives. First, we aimed to record the timing and duration of pain during contractions using a new approach consisting of handgrip force measured by a handheld dynamometer (first part). In the second part of the study, we used these data to simulate time series of (painful) contractions and also remifentanyl concentrations achieved with either standard bolus application at the beginning of the pain sensation or with optimized bolus delivery by prediction of the contractions. The objective of optimization is to find an optimum coincidence of remifentanyl concentration and the intensity of pain during uterine contractions.

Finally, different models of prediction of future contractions were compared and the most parsimonious chosen for further evaluation of efficacy and safety of a hypothetical optimized remifentanyl PCA application system during labour.

Methods

After institutional review board approval (Commission centrale d'éthique de la recherche sur l'être humain des HUG 12-077) and written informed consent, 43 parturients were included in the study. Parturients received information about the study on arrival in the delivery suite.

Experimental part of the study

After informed consent, the handling of the dynamometer was explained and reference values for handgrip force corresponding to subjective pain levels of moderate pain (5 on a scale of 0–10) and extreme pain (10 on a scale of 0–10) were obtained.

The dynamometer (Noraxon Biofeedback dynamometer, Velamed, Cologne, Germany) was connected via an analogue–digital interface to a portable computer. Handgrip force measured by the dynamometer was recorded continuously using Signal software (CED, Cambridge, UK) during periods of 20 min each. Women were instructed to compress the dynamometer with a force corresponding to their subjective pain level and hold it until the pain has subsided. In parallel, the external tocographic signal of uterine contractions and an abdominal wall electromyogram were recorded.

The first recording (20 min) of frequency and intensity of contractions was taken during the first stage of labour when women experienced regular painful contractions, not yet requiring analgesia except for physical relaxation techniques provided by the midwife.

A second recording of 20 min duration was obtained during more advanced labour at the time when women demanded epidural analgesia, but before epidural placement. There was no minimal cervical dilation for epidural analgesia and therefore, the time during labour for the second recording was variable, from early to late first stage of labour.

Analysis

The duration of the pain during contractions was measured as the time for which the dynamometer signal deviated from baseline, indicating pain. The interval between painful contractions was measured as the time between two starting points of the deviation from baseline on the dynamometer signal. These durations and intervals were compared with those recorded by external tocography.

Mathematical modelling

Modelling of contraction time series

Time series of duration and intervals of painful contractions obtained from the dynamometer signal were further analysed using the R statistical software.¹¹ Let δ_i be the contraction interval between contraction $i-1$ and i and knowing the first contraction interval, we are trying to forecast with an horizon of 1 the next contraction interval:

$$\delta_{i+1} = \Omega(\delta_0, \dots, \delta_i)$$

The simplest way to forecast the next interval is to use the previous one ('naïve' forecasting):

$$\delta_{i+1} = \delta_i.$$

Another simple way of forecasting is to use a moving average of the last n contraction intervals. Here, we used $n=2-4$, because sample calculations with higher n did not improve forecasting.

More elaborate forecasting methods are exponential smoothing (ETS) and the autoregressive integrated moving average (ARIMA), both available as functions of the R forecast package.¹¹ The functions were used to provide automatic adaptation of all parameters and choice of an optimized model based on maximum likelihood estimation and Akaike's information criterion.¹² For each new contraction, a new optimal model was computed with both ETS and ARIMA and then used to forecast the next contraction interval.

To obtain longer time series to test the different prediction models, inter-contraction time interval data of at least 100 min duration derived from external tocography monitoring from an additional 25 parturients were used.

Modelling of remifentanyl concentration

Remifentanyl effect-site concentrations were modelled using STANPUMP (Steven Shafer, Stanford, available at www.stanpump.com).

opentci.org) and the model published by Minto and colleagues.¹³ Simulations are based on a typical patient, 25 yr old, with a height of 165 cm, and a weight of 70 kg. Bolus dose was $35 \mu\text{g}$ ($0.5 \mu\text{g kg}^{-1}$), and the bolus was assumed to be delivered within 10 s. Bolus doses vary widely in the literature, the dose chosen was the mean dose of the studies included in the systematic review of Schnabel and colleagues.³

The average effect-site concentration of remifentanyl during contractions was used as an estimate of PCA efficacy, and the average effect-site concentration in the inter-contraction interval was used as an estimate of PCA safety.

Comparison of the models predicting contractions

For each labour data set, we computed the prediction error defined as the difference x_i between the exact delay between two consecutive contractions and the predicted counterpart using a method M . For every forecasting method used, the error is normally distributed with mean $E(x)=0$. We were interested to find the method M which would give the smallest standard deviation (SD) of the prediction error, meaning that on average, the prediction by M is the most accurate. Since χ_M is normally distributed over zero with variance σ_M , we use

a Bartlett's test to verify homoscedasticity for the different forecasting methods. For the Bartlett's test, the null hypothesis is that there is no difference in prediction variance whatever the forecasting method is, thus a significant P -value indicates that there are at least two variances that are significantly different.

Results

The 43 participating women had an average age of 32 (4 SD) yr, weighed on average 75 (11 SD) kg, and had an average height of 164 (5 SD) cm, resulting in an average BMI of 28 kg m^{-2} (4 SD). Two-thirds of the women were nulliparous, and one-third had induced labour. In two-thirds of the women, cervical dilatation was still less than 20 mm when the second recording of pain during contractions was performed (at our institution, most women demand and receive epidural analgesia early during labour). An original tracing of the dynamometer is shown in Figure 1. As reported elsewhere, hand grip force recorded by the dynamometer was moderately correlated with subjective pain intensity.¹⁴ Pain during contractions recorded via the dynamometer corresponded well with those on the tocographic tracing and onset of pain coincides with

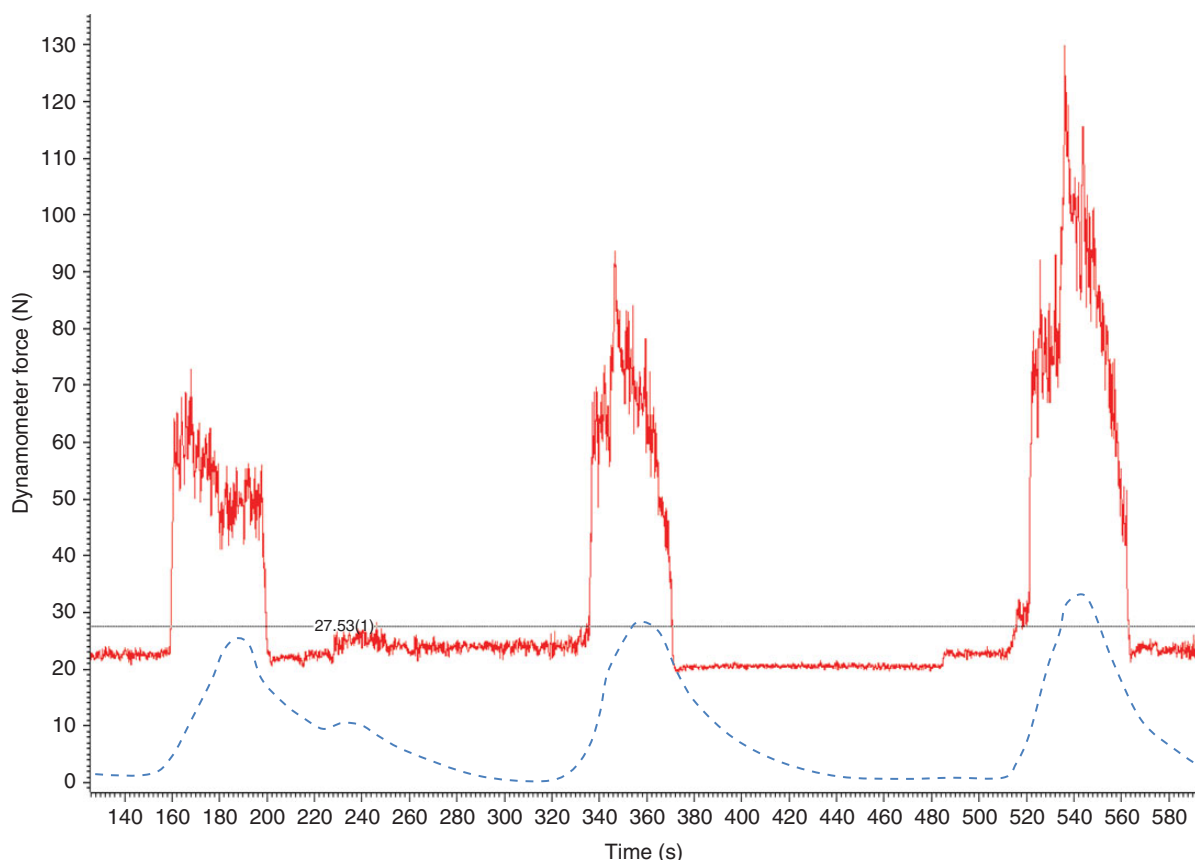


Fig 1 Original tracings of the handheld dynamometer for an exemplary parturient (continuous line) in parallel with the external tocography recording (dashed line). Handgrip force is given in newtons and time in seconds. The baseline limit (dotted line) is determined by averaging baseline fluctuations of the dynamometer signal.

the onset of contractions. However, the duration of pain during the contractions was shorter than the duration of the rise in abdominal wall tension for most contractions. The average duration of pain during contractions recorded by the dynamometer was 45 s both during the first and the second recording, with an SD of 14 s.

The time interval between painful contractions was highly variable, with a mean of 151 (31 SD) s during the first and 154 (52 SD) s during the second recording. Examples of time series data (four patients with the longest time series of more than 200 min) of the inter-contraction time interval are shown in Figure 2.

Using the time series of the inter-contraction time intervals, different models were tested in their ability to predict future contractions.

Prediction of future contractions by modelling contraction time series

The 'goodness of fit' of the different models can be described by the differences between predicted values and actual values or rather the SD of these differences, since the differences themselves will have a standard distribution with a mean of zero. In Table 1, the SD s of these differences are shown for all

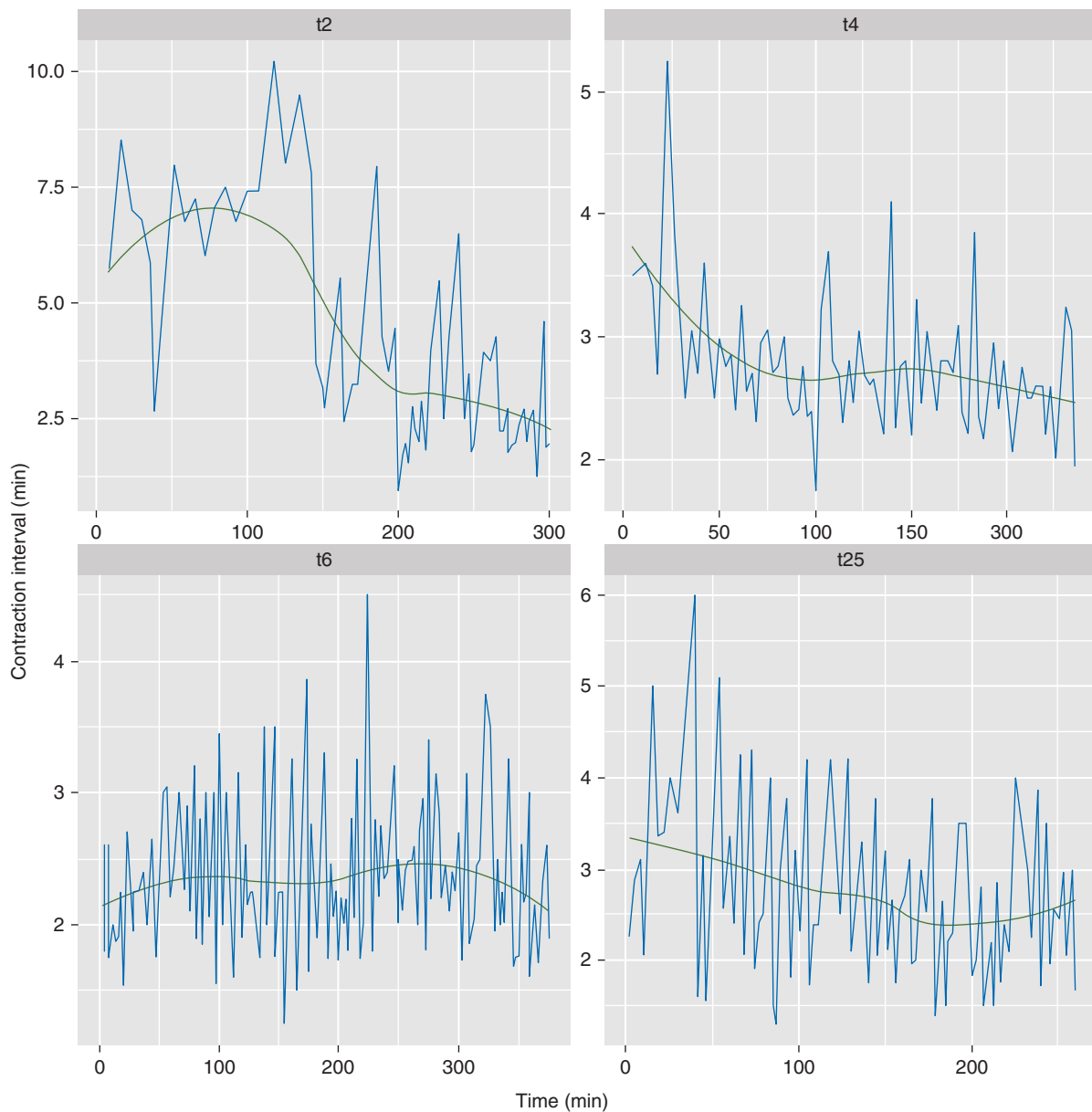


Fig 2 Time series data of the inter-contraction time interval from four patients (coded t2, t4, t6, t25) with uninterrupted time series of more than 200 min.

Table 1 sds (in min) of the differences between observed and predicted inter-contraction intervals for all patients with long (>100 min) time series and the different forecast models: naïve, moving average (mean) of the last 2, 3, and 4 intervals, ETS, and autoregressive integrated moving average (ARIMA). *P*-values are given for Bartlett's test to check for equal variances between different models (null hypothesis—no differences between the variances for all models)

Patient	Naïve	Mean 2	Mean 3	Mean 4	ETS	ARIMA	<i>P</i> -value
1	1.70	1.64	1.63	1.74	1.86	1.74	0.65
2	1.00	1.00	0.98	0.98	0.93	0.97	0.91
3	0.69	0.61	0.57	0.54	0.55	0.54	0.17
4	0.81	0.67	0.62	0.60	0.56	0.54	0.00
5	0.52	0.49	0.49	0.51	0.51	0.53	0.91
6	0.88	0.79	0.78	0.79	0.82	0.80	0.77
7	1.23	0.90	0.92	0.88	0.87	0.85	0.01
8	0.74	0.66	0.62	0.57	0.61	0.59	0.51
9	0.89	0.74	0.77	0.70	0.65	0.63	0.62
10	1.22	1.11	0.97	0.94	0.91	0.86	0.03
11	1.54	1.51	1.34	1.31	1.20	1.21	0.47
12	1.44	1.14	1.10	1.05	1.03	0.98	0.05
13	1.74	1.50	1.48	1.48	1.62	1.65	0.72
14	0.43	0.36	0.36	0.36	0.38	0.39	0.14
15	0.48	0.42	0.39	0.37	0.37	0.36	0.01
16	1.01	0.83	0.77	0.75	0.74	0.68	0.02
17	0.42	0.37	0.34	0.33	0.34	0.33	0.26
18	0.66	0.52	0.50	0.49	0.46	0.44	0.01
19	0.73	0.59	0.55	0.56	0.55	0.56	0.20
20	1.24	1.05	1.05	1.02	1.15	1.11	0.47
21	0.68	0.64	0.59	0.55	0.51	0.51	0.01
22	0.69	0.64	0.55	0.55	0.59	0.54	0.11
23	0.66	0.59	0.52	0.52	0.52	0.62	0.04
24	1.36	1.08	1.05	1.01	1.00	1.04	0.03
Average	0.95	0.83	0.79	0.77	0.78	0.77	

models and each of the 24 patients with long (>100 min) time series. For eight of the 24 cases, a Bartlett's test for equal variances yielded a significant difference between models (Table 1). Differences between simple moving average forecasting models (at least with means of ≥ 3) and the more elaborate ETS and ARIMA models are negligible.

A simple three-point moving average model was thus considered a parsimonious compromise between forecasting efficacy and complexity (which coincides with computationally demanding calculation) and used for further calculations.

Modelling of remifentanil effect-site concentration

Using the average duration of pain during contractions and the inter-contraction intervals obtained by the dynamometer recordings, remifentanil effect-site concentration was modelled in relation to the timing of pain during the contractions. To simplify modelling, the duration of pain during contractions was modelled as fixed, using the mean duration obtained from the dynamometer recordings.

Figure 3 shows, for one patient, the remifentanil plasma and effect-site concentrations when the remifentanil bolus is administered at the beginning of the pain sensation (Fig. 3A), in an ideal situation where remifentanil concentration is

optimized to coincide with the pain sensation (Fig. 3B), and when automatically administered using a three-point moving average prediction algorithm (Fig. 3C). Although the prediction algorithm improves correlation of pain duration and remifentanil effect-site concentration, sometimes the model predicts a contraction which does not occur (arrows in Fig. 3).

For most patients, the efficacy of a remifentanil PCA, measured as the average remifentanil concentration during a contraction (and the 'instantaneous' concentration at the beginning of the pain sensation during contractions), can be improved when using an optimized timing by a simple three-point moving average forecast of contractions (Fig. 4).

The mean concentration of remifentanil in-between two contractions, however, which is a factor of the safety of a remifentanil PCA, is less changed when bolus timing is optimized (Fig. 4).

Discussion

The experimental part of this study provides data about the timing, duration, and spacing of pain during the first stage of labour, and about its regularity or rather irregularity. A study of a large cardiotocography database has found similar values for the intervals in between contractions,¹⁵ obviously without giving information about pain duration and, more

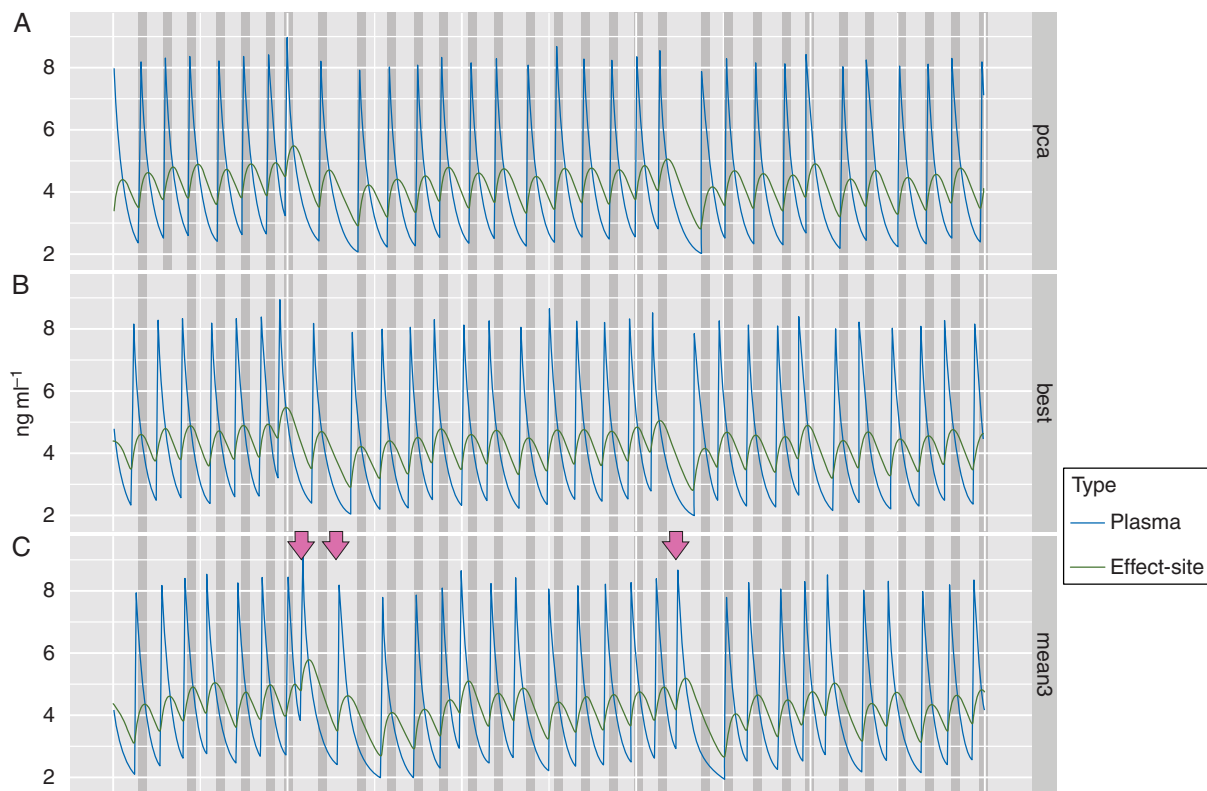


Fig 3 Modelled remifentanyl plasma and effect-site concentration during a series of contractions of an exemplary patient. Painful contractions are indicated by dark grey bars. Different modes of bolus application are compared: (A, upper set of traces) the remifentanyl bolus is administered at the beginning of the pain sensation (traditional PCA setting); (B, second set of traces) in an ideal situation where remifentanyl effect-site concentration is optimized to coincide with the pain sensation; (C, third set of traces) automatic bolus application with prediction of the time point by a moving average algorithm of the last three contraction intervals. The arrow marks contractions predicted by the model which do not occur in reality.

importantly, about the irregularity of individual time series of contractions.

In order to record the timing of pain during contractions, it is not sufficient to simply register uterine tone, since the correlation between uterine tone and pain is highly variable.¹⁶ In addition, standard external tocography yields a highly unreliable signal, and internal tocography is invasive and rarely available. A signal given by the parturient herself may indicate the pain duration of a contraction more consistently. We had tested a system where parturients registered the pain during contractions by pressing a handheld dynamometer, since handgrip force has been shown to correlate with descriptors of pain intensity.¹⁷ A preliminary analysis had shown that pain onset coincided well with the onset of contractions, but that pain duration was often shorter than the duration of contractions on the tocographic recording. Therefore, we used the dynamometer data to calculate the mean duration of pain during contractions. To generate time series of contractions, however, which are calculated using the onset of contractions only, the tocographic data are sufficient.

The results gathered in the first part of the study allowed us to perform the mathematical modelling part. In this simulation, we were able to show that a simple algorithm can

indeed predict the occurrence of future contractions quite well, despite the observed irregularity.

Differences of simple moving average algorithms and the complex ETS and ARIMA models are small in terms of the accuracy of prediction. Both optimal ETS model and optimal ARIMA model will eventually yield, through iterative refinement of model parameters, the best forecasting model for a specific labour data set. Nevertheless, the process being iterative and needing several contraction intervals to bootstrap, it is possible to obtain, in certain cases, suboptimal results compared with more simple models.

Finally, if a three-point moving average forecast algorithm of contractions is used, the mean remifentanyl concentration during a contraction, and especially at the beginning of a contraction, can be increased for most patients. This in turn increases the efficacy of a remifentanyl PCA. The average remifentanyl concentration in between two contractions, however, is much less dependent on the timing of a bolus, and will be only slightly lower when a remifentanyl bolus is applied before a (predicted) contraction. When considering this a factor of the safety of a remifentanyl PCA, even optimal bolus application will not much improve safety. The finding from our experimental data that pain during contractions is

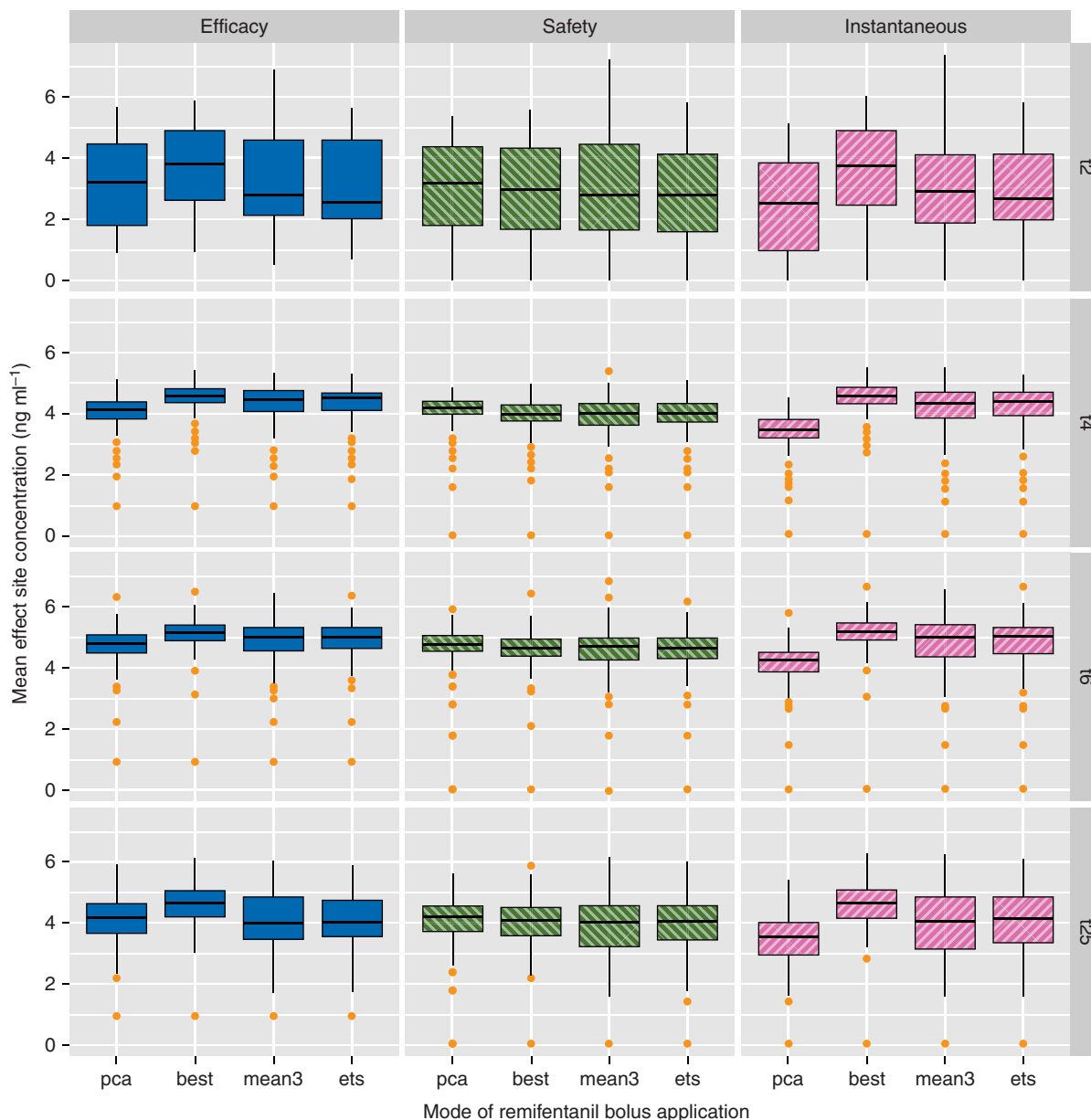


Fig 4 Comparison of the different modes of remifentanyl bolus application (PCA, bolus is administered at the beginning of a contraction; BEST, bolus is administered at the ideal time point to maximize efficacy; MEAN3, bolus is administered at the time point predicted by a three-point moving average model; ETS, bolus is administered at the time point predicted by an ETS model) in terms of efficacy, safety, and effect-site concentration at the beginning of pain during a contraction ('instantaneous'). Shown are simulated mean effect-site concentrations for the four exemplary patients with time series of more than 200 min. Box plots denote outliers_{min} < Q1 - 1.5 IQR < Q1 < Q2 < Q3 < Q3 + 1.5 IQR < outliers_{max} with IQR = Q3 - Q1.

actually shorter than the duration of contractions estimated in previous studies using tocographic recordings puts further weight on the importance of inter-contraction remifentanyl concentration.

Our study is certainly limited by the fact that we only simulated remifentanyl bolus application and modelled remifentanyl concentrations using the pharmacokinetic-pharmacodynamic model of Minto and colleagues.¹³ Since remifentanyl pharmacokinetics are linear,¹⁸ simulation is a valid way to

predict clinical scenarios. The Minto model is not very dependent on age in the age range concerned by obstetrical analgesia. It is based on lean body mass and thus independent of weight gain during pregnancy. However, no pharmacokinetic-pharmacodynamic studies exist for pregnant patients. In addition, peak respiratory depression may arrive even later than the peak remifentanyl effect estimated by the model used. Whereas the peak analgesic effect may coincide with the peak effect predicted by the Minto model,¹⁹ peak respiratory

depression has been found to occur about 2.5 min after a bolus, and thus considerably later.²⁰ Unfortunately, no pharmacokinetic–pharmacodynamic exists for respiratory depression, and thus we were not able to simulate this important side-effect directly.

In addition, the safety of a remifentanil PCA—improved by prediction of future contraction and guided bolus application—will not only be determined by average concentrations, but also by those arriving at the outer limits of the probability distributions. The irregularity of inter-contraction intervals observed in the experimental part of our study is large, and thus from time to time, a bolus will be applied at a time when no contraction will follow for several minutes (see examples in Fig. 3), potentially leading to respiratory depression.

Recently, several cases of respiratory, cardiac arrest, or both with the use of a remifentanil PCA during labour have been reported,^{4–7} and editorials have discussed the safety of this alternative to epidural analgesia during labour.^{1–21} Even if the efficacy of remifentanil PCA may be improved by optimized bolus application, our simulations suggest that this would only have a minimal impact on patient safety. Sedation is an important warning sign of opioid overdose, and thus, we suggest that optimized bolus application should never be used with automatic bolus application. Instead, a signal ('green light') could be given to the parturient, who will have to press the bolus button herself. With this approach, the parturient stays in total control of her analgesia, a factor known to influence maternal satisfaction.²²

However, remifentanil respiratory depression can occur very fast, and thus sedation is not a sufficient warning sign. One-to-one care by a midwife is recommended, and continuous presence of a caregiver appears to be vital. In at least two of the published case reports, the incident occurred during a short absence of the midwife, underlining the importance of a continuous presence of a caregiver.

It has also been suggested that remifentanil bolus calculation be based on lean body weight instead of actual weight.²³ We have used actual weight for our simulations, since remifentanil clearance in pregnant women at term has been found to be rather increased,²⁴ and actual dose should best be titrated to effect to avoid under- and overdosing. Muchatuta and Kinsella²¹ recommended in their editorial a 3 min lockout to avoid a second bolus being given before the maximum respiratory depression of a first bolus has been attained. Considering our finding that even in first-stage labour, the average interval between two contractions is <3 min, a 3 min lockout will impede pain relief. Our results suggest that optimizing bolus application by prediction of future contraction may lead to a better overlap of pain and remifentanil effect and thus improve safety. However, this effect is small, and will not diminish the need of consequent surveillance without interruptions.

In summary, we have shown, based on time series of painful contractions during labour, that future contractions can be predicted by a simple algorithm with sufficient precision to improve the efficacy of remifentanil PCA during first-stage labour. However, safety will only be improved slightly by

optimized bolus application, and thus, the need for safety measures will not be changed by this technique.

Authors' contributions

B.R.: study design, patient recruitment, data analysis, remifentanil concentration modelling, and writing up of the first draft of the paper. N.W.: patient recruitment, data collection and analysis, and finalizing the manuscript. C.J.: data analysis, modelling of contractions, and finalizing the manuscript. G.S.: study organization and finalizing the manuscript.

Acknowledgement

We would like to thank all participating parturients and midwives for their support of the study.

Declaration of interest

None declared.

Funding

This work was supported by the 'Fonds de Service' of the Department of Anesthesiology, Pharmacology and Intensive Care of the Hôpitaux Universitaires de Genève.

References

- Kranke P, Girard T, Lavand'homme P, et al. Must we press on until a young mother dies? Remifentanil patient controlled analgesia in labour may not be suited as a 'poor man's epidural'. *BMC Pregnancy Childbirth* 2013; **13**: 139
- Leong WL, Sng BL, Sia ATH. A comparison between remifentanil and meperidine for labor analgesia: a systematic review. *Anesth Analg* 2011; **113**: 818–25
- Schnabel A, Hahn N, Broscheit J, et al. Remifentanil for labour analgesia: a meta-analysis of randomised controlled trials. *Eur J Anaesthesiol* 2012; **29**: 177–85
- Pruefer C, Bewlay A. Respiratory arrest with remifentanil patient-controlled analgesia—another case. *Anaesthesia* 2012; **67**: 1044–5
- Bonner JC, McClymont W. Respiratory arrest in an obstetric patient using remifentanil patient-controlled analgesia. *Anaesthesia* 2012; **67**: 538–40
- Marr R, Hyams J, Bythell V. Cardiac arrest in an obstetric patient using remifentanil patient-controlled analgesia. *Anaesthesia* 2013; **68**: 283–7
- Kinney MAO, Rose CH, Traynor KD, et al. Emergency bedside cesarean delivery: lessons learned in teamwork and patient safety. *BMC Res Notes* 2012; **5**: 412
- Volmanen PVE, Akural EI, Raudaskoski T, et al. Timing of intravenous patient-controlled remifentanil bolus during early labour. *Acta Anaesthesiol Scand* 2011; **55**: 486–94
- Jost A, Ban B, Kamenik M. Modified patient-controlled remifentanil bolus delivery regimen for labour pain. *Anaesthesia* 2013; **68**: 245–52
- Huang Z, Shyu M-L, Tien J, Vigoda MM, Birnbach D. Prediction of uterine contractions using knowledge-assisted sequential pattern analysis. *IEEE Trans Biomed Eng* 2013; **60**: 1290–7
- R Development Core Team. *R: A Language and Environment for Statistical Computing*. Vienna, Austria: R Foundation for Statistical Computing, 2008. Available from <http://www.R-project.org>

- 12 Hyndman R, Khandakar Y. Automatic time series forecasting: the forecast package for R. *J Stat Softw* 2008; **27**: 1–29
- 13 Minto CF, Schnider TW, Egan TD, et al. Influence of age and gender on the pharmacokinetics and pharmacodynamics of remifentanil. I. Model development. *Anesthesiology* 1997; **86**: 10–23
- 14 Wickboldt N, Savoldelli G, Rehberg-Klug B. Assessment of labour pain using hand grip force. *ASA Annu Meet Abstr* 2013; **A1073**
- 15 Oppenheimer LW, Bland ES, Dabrowski A, Holmes P, McDonald O, Wen SW. Uterine contraction pattern as a predictor of the mode of delivery. *J Perinatol* 2002; **22**: 149–53
- 16 Corli O, Grossi E, Roma G, Battagliarin G. Correlation between subjective labour pain and uterine contractions: a clinical study. *Pain* 1986; **26**: 53–60
- 17 Gracely RH, McGrath F, Dubner R. Ratio scales of sensory and affective verbal pain descriptors. *Pain* 1978; **5**: 5–18
- 18 Egan TD, Lemmens HJ, Fiset P, et al. The pharmacokinetics of the new short-acting opioid remifentanil (GI87084B) in healthy adult male volunteers. *Anesthesiology* 1993; **79**: 881–92
- 19 Egan TD, Kern SE, Muir KT, White J. Remifentanil by bolus injection: a safety, pharmacokinetic, pharmacodynamic, and age effect investigation in human volunteers. *Br J Anaesth* 2004; **92**: 335–43
- 20 Babenco HD, Conard PF, Gross JB. The pharmacodynamic effect of a remifentanil bolus on ventilatory control. *Anesthesiology* 2000; **92**: 393–8
- 21 Muchatuta NA, Kinsella SM. Remifentanil for labour analgesia: time to draw breath? *Anaesthesia* 2013; **68**: 231–5
- 22 Hodnett ED. Pain and women's satisfaction with the experience of childbirth: a systematic review. *Am J Obstet Gynecol* 2002; **186**: S160–72
- 23 Tveit TO, Halvorsen A, Seiler S, Rosland JH. Efficacy and side effects of intravenous remifentanil patient-controlled analgesia used in a stepwise approach for labour: an observational study. *Int J Obstet Anesth* 2013; **22**: 19–25
- 24 Kan RE, Hughes SC, Rosen MA, Kessin C, Preston PG, Lobo EP. Intravenous remifentanil: placental transfer, maternal and neonatal effects. *Anesthesiology* 1998; **88**: 1467–74

Handling editor: L. Colvin