

# High-density lipoprotein, beta cells, and diabetes

Arnold von Eckardstein<sup>1</sup> and Christian Widmann<sup>2\*</sup>

<sup>1</sup>Institute of Clinical Chemistry, University Hospital Zurich, Zurich, Switzerland; and <sup>2</sup>Department of Physiology, Faculty of Biology and Medicine, University of Lausanne, Bugnon 7, 1005 Lausanne, Switzerland

Received 17 April 2014; revised 21 May 2014; accepted 30 May 2014; online publish-ahead-of-print 4 June 2014

High-density lipoproteins (HDLs) exert a series of potentially beneficial effects on many cell types including anti-atherogenic actions on the endothelium and macrophage foam cells. HDLs may also exert anti-diabetogenic functions on the beta cells of the endocrine pancreas, notably by potently inhibiting stress-induced cell death and enhancing glucose-stimulated insulin secretion. HDLs have also been found to stimulate insulin-dependent and insulin-independent glucose uptake into skeletal muscle, adipose tissue, and liver. These experimental findings and the inverse association of HDL-cholesterol levels with the risk of diabetes development have generated the notion that appropriate HDL levels and functionality must be maintained in humans to diminish the risks of developing diabetes. In this article, we review our knowledge on the beneficial effects of HDLs in pancreatic beta cells and how these effects are mediated. We discuss the capacity of HDLs to modulate endoplasmic reticulum stress and how this affects beta-cell survival. We also point out the gaps in our understanding on the signalling properties of HDLs in beta cells. Hopefully, this review will foster the interest of scientists in working on beta cells and diabetes to better define the cellular pathways activated by HDLs in beta cells. Such knowledge will be of importance to design therapeutic tools to preserve the proper functioning of the insulin-secreting cells in our body.

**Keywords** HDLs • Pancreatic beta cells • Diabetes • Signalling • Protective signals • ER stress • Apoptosis

**This article is part of the Spotlight Issue on HDL biology: new insights in metabolism, function, and translation.**

## 1. Introduction

Diabetes mellitus is defined by the finding of a fasting and postprandial plasma glucose level higher than 7.0 and 11.1 mM, respectively, or a glycated haemoglobin A1c level above 6.5%. Diabetes mellitus is differentiated into diabetes mellitus type 1 (T1DM), diabetes mellitus type 2 (T2DM), and several rarer forms of diabetes such as gestational diabetes or inherited forms.<sup>1</sup> The rarer T1DM predominantly develops in children and adolescents and is caused by a primary loss of insulin production due to autoimmune beta-cell destruction. The much more frequent T2DM is manifested mostly in adults after many years of insulin resistance. In this case, diabetes develops when the pancreatic beta cells can no longer produce the increased insulin secretion required to compensate insulin resistance. Usually, the pre-diabetic insulin-resistant state is clinically silent but revealed upon finding of impaired fasting plasma glucose (5.6–7.0 mM), glucose intolerance (2 h plasma glucose level after exposure to 75 g glucose ranging between 7.0 and 11.1 mM), or glycated haemoglobin level ranging between 5.4 and 6.5%.<sup>1</sup> This pre-diabetic state is frequently accompanied by abdominal obesity (waist circumference > 102 cm in men or > 88 cm in women), arterial hypertension, and a dyslipidaemia characterized by fasting plasma triglycerides above 2.3 mM as well as high-density lipoprotein (HDL) cholesterol levels below 1.05 mM in men or below 1.25 mM in women. These confounding cardiovascular risk factors, which are

defining criteria of the metabolic syndrome, put pre-diabetic patients at substantially increased risk for cardiovascular disease.<sup>1</sup>

By its increasing prevalence, T2DM has become a major public health problem. From 1990 to 2010, diabetes-related mortality doubled and since has become the worldwide ninth most prevalent cause of death. With respect to potential years of life lost, diabetes ranks 19 worldwide and 13 in Western Europe.<sup>2</sup> The major reasons for premature mortality of diabetic patients are cardiovascular diseases, chronic kidney disease, and cancer. Glycaemic control is a mainstay to prevent acute metabolic decompensation and microvascular complications, notably nephropathy and retinopathy, as well as peripheral neuropathy. Lowering of low-density lipoprotein cholesterol (LDL-C) by statins has emerged as the most effective means of reducing the risk of myocardial infarction, even in diabetic subjects. However, statins were also found to dose-dependently increase the risk of manifesting diabetes mellitus, especially in patients who are already affected by one or several components of the metabolic syndrome and hence have increased risks of both cardiovascular events and manifestation of diabetes mellitus.<sup>3–5</sup> It has been argued that the cardiovascular benefit of statins measured by the reduction of clinical endpoints outweighs the risk of diabetes mellitus, the latter being revealed by hyperglycaemia rather than by a hard clinical endpoint. It is, however, also important to note that the impact of statins for microvascular and neurological complications of diabetes is not well established.

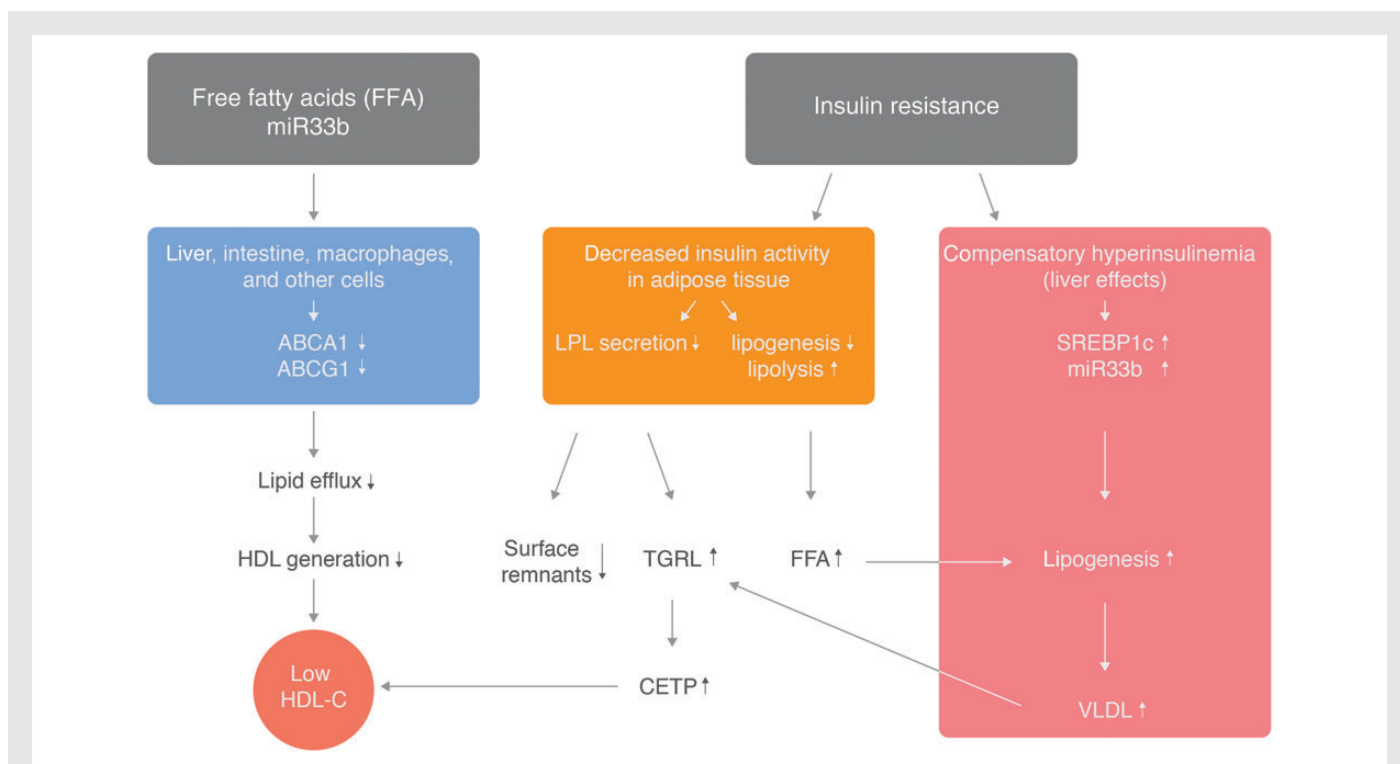
\* Corresponding author. Tel: +41 21 692 5123; fax: +41 21 692 5505, Email: christian.widmann@unil.ch

## 2. Low high-density lipoprotein levels as a risk factor for diabetes (and cardiovascular disease) development

A low level of HDL-cholesterol (HDL-C) is a well-defined risk factor for the development of cardiovascular diseases<sup>6</sup> and overall survival in general,<sup>7</sup> even when LDL-C levels are optimally controlled.<sup>8,9</sup> More recently, evidence has accumulated that a low HDL-C level also is an independent risk factor for the development of diabetes.<sup>10–13</sup>

While a low HDL-C level (<1 mM HDL-cholesterol) is a bad prognosis for both diabetes and cardiovascular disease development, very high HDL-C levels do not appear to be associated with less risk than intermediate HDL-C levels, at least for cardiovascular diseases.<sup>14</sup> In two recent meta-analyses of population studies and statin trials published in *JAMA*<sup>15</sup> and *Circulation*,<sup>16</sup> the 20% individuals with the highest HDL-cholesterol levels (HDL-C concentrations above 1.62 and 1.47 mM, respectively) were not better protected from coronary heart diseases than the individuals in the 60th–80th percentiles with HDL-cholesterol concentrations in the *JAMA* and *Circulation* studies ranging from 1.35 to 1.62 mM and 1.24 to 1.47 mM, respectively.

Like the association with coronary heart disease, the association of low HDL-C with an increased risk of T2DM is independent of other risk factors and confounders such as glucose, HbA1c, body mass index, triglycerides, and blood pressure. This statistical independence does not imply causality. In fact, the association of low HDL-C with increased risk of T2DM was traditionally interpreted to be a bystander of insulin resistance rather than an indication of pathogenic causality. Indeed, there are indications for reverse causality, meaning that low HDL-cholesterol levels are the consequence of the pre-diabetic and diabetic state rather than a cause of diabetes. In particular, indirect mechanisms involving triglyceride-rich lipoproteins, free fatty acids, microRNA 33 (miR33), insulin resistance, and the resulting hyperinsulinaemia may promote a decrease in HDL-cholesterol (*Figure 1*). This may explain why research on the anti-diabetic potential of HDL has been relatively neglected until recently (i.e. the middle of the last decade). This contrasts with the research on the anti-atherogenic role of HDLs that has been stimulated for more than 50 years by the inverse association of low HDL-C and cardiovascular risks. In this dispute of causality, one must also consider the option that both relationships may be true: in a vicious cycle, increased insulin resistance and hyperinsulinaemia compromise HDL metabolism and lead to quantitative and qualitative alterations of HDL, which in turn interfere



**Figure 1** Disturbed HDL metabolism in insulin resistance. Insulin resistance implies both reduced insulin sensitivity of some organs and increased response of other organs to the compensatory hyperinsulinaemia. Hyperinsulinism increases hepatic production of triglycerides and very-low-density lipoproteins by up-regulating the expression of the transcription factor SREBP1c (sterol regulatory element binding protein 1c) and the microRNA miR33b that is encoded by an intron of SREBP1c.<sup>17–19</sup> In the adipose tissue, insulin resistance is interfering with lipogenesis and enhances lipolysis so that the concentration of circulating free fatty acids is increasing, which in turn results in the stimulation of hepatic lipogenesis and hence VLDL production. The increased secretion of VLDL produces hypertriglyceridaemia, which is not sufficiently cleared because of reduced lipoprotein lipase (LPL) activity. LPL is released from adipocytes upon insulin stimulation, but this is compromised in insulin resistance. Reduced lipolysis of VLDL decreases the production of surface remnants that contribute to the maturation of HDL. Moreover, hypertriglyceridaemia increases the activity of cholesteryl ester transfer protein (CETP) that exchanges cholesteryl esters of HDL against triglycerides of VLDL. This leads to a decrease in the concentration of HDL cholesterol.<sup>17</sup> Finally, the production of HDL precursors in the liver and intestine is disturbed in insulin resistance states because the ATP-binding cassette transporters A1 and G1 are inhibited by free fatty acids at both the transcriptional and post-translational levels, as well as by miR33 acting at the post-transcriptional level.<sup>18,20</sup>

with the production and action of insulin.<sup>17–19,21</sup> The insulin-secreting pancreatic beta cells and the cells that respond to insulin such as skeletal muscle cells are two cell categories that could benefit from a beneficial effect of HDLs in the context of glucose homeostasis and diabetes.<sup>22</sup> Positive effects of HDLs on insulin-independent glucose uptake and utilization by adipocytes, myocytes, and hepatocytes as well as HDL-mediated control of inflammation could also participate in the protection against diabetes.<sup>23–27</sup> These latter effects have been the focus of recent excellent review articles.<sup>22,28</sup> Therefore and because it is beta-cell failure that determines the conversion of insulin-resistant pre-diabetes into manifest T2DM, we here focus on the role played by HDLs in beta cells and on the mechanisms that can be activated by HDLs in these cells to mediate their beneficial effects. But before we move to the main topic of this review, let us raise two points that are sometimes overlooked when working with HDLs.

### 3. Signalling molecules carried by high-density lipoproteins: the problem of heterogeneity and scarcity

HDL particles are the most complex and heterogeneous lipoproteins. More than 80 different proteins and hundreds of different lipid species have been found associated with HDL particles.<sup>29</sup> In addition, HDLs can carry various miRNAs and deliver them to different tissues.<sup>30,31</sup> HDL particles are mainly produced by the liver, but also, to a lower extent, by the intestine. These tissues produce the major HDL-protein component, apolipoprotein A-I (ApoA-I), as well as its major lipids (phosphatidylcholine and cholesterol). Many minor HDL components are not only produced by hepatocytes (e.g. paraoxonase) but also by other organs [e.g. ApoM both in the liver and kidney; clusterin and sphingosine-1-phosphate (S1P) almost ubiquitously]. HDLs acquire these bioactive molecules by interacting with other cell types. For example, both native and reconstituted HDLs were found to induce S1P efflux from cardiomyocytes and erythrocytes [Ref.<sup>32</sup> and Suter and von Eckardstein (unpublished results)]. Hence, HDLs can locally induce the release of bioactive molecules (e.g. S1P, phosphatidylserine, clusterin, or ApoE) and incorporate them in their structure. In this scenario, even artificial HDL consisting only of ApoA-I and phosphatidylcholine may acquire additional bioactive molecules when exposed to target cells (e.g. pancreatic beta cells). They can then present these bioactive molecules to cells in an autocrine manner or transport them to other cells to elicit paracrine or endocrine effects.

A given HDL particle may not carry all the molecules identified by isolation of HDLs through ultracentrifugation, gel filtration, or affinity chromatography. Indeed, some bioactive components are only carried by a minority of HDL particles.<sup>29</sup> For example, S1P, which has been reported to mediate the capacity of HDLs to induce NO release and relaxation of the vascular endothelium,<sup>33</sup> is found on ~2% of circulating HDLs,<sup>29</sup> potentially even less if there is a sub-group of HDL particles that is 'specialized' in carrying S1P and therefore carries more than one S1P molecule per HDL particle. The scarcity of some bioactive molecules may greatly complicate the interpretation of studies assessing the signalling capacities of HDLs because the concentration of HDL particles carrying a given bioactive molecule is rarely determined. It should, however, not be concluded that if a bioactive molecule is rarely encountered on HDL particles, it should not play a physiological role. If we take S1P

for example, the concentration of HDLs carrying this lipid is about 500 nM. This should be amply sufficient to induce vasorelaxation of vessels as the half-maximal response induced by purified S1P is ~100 nM.<sup>33</sup>

### 4. The high-density lipoprotein concentration conundrum

A rather wide range of concentrations of native or reconstituted HDL as well as lipid-free apolipoproteins has been used by various laboratories to induce specific cellular responses such as cholesterol efflux, cell protection, and the stimulation of various signal transduction pathways. Yet, it is often difficult to compare the experimental settings from various publications because the amounts of HDLs reported in the literature are calibrated in multiple ways based on either total protein, ApoA-I, cholesterol, or phosphatidylcholine using mass or molar concentrations. As HDLs are quite heterogeneous in composition, it is difficult to give exact conversion numbers but roughly one can calculate, based on the content of cholesterol vs. protein in HDLs (18 vs. 52%),<sup>34</sup> that 1 mM (~0.4 mg/mL) HDL-cholesterol corresponds to ~1.2 mg/mL HDL-protein, about 80% of which corresponds to ApoA-I. Efficacious doses range from around 50 µg/mL HDL-protein (~0.06 mM HDL-cholesterol) to 1 mg/mL HDL-protein (~1.2 mM HDL-cholesterol). The maximal HDL concentrations used experimentally are within the range of plasmatic concentrations (1–2 mM HDL-cholesterol). Are non-endothelial cells exposed to such plasmatic concentrations *in vivo*? HDL concentrations have been determined in a few extravascular compartments. For example, there are 0.4, 0.7, and 0.3–0.6 mM HDL-cholesterol in the lymph, the synovial fluid, and the ovarian follicular fluid, respectively.<sup>35–38</sup> Hence, these concentrations amount to only 20–50% of the intravascular ones. If one considers that the islets of Langerhans are vascularized by fenestrated capillaries, HDL concentrations in the vicinity of beta cells may, however, not be far from 1 mg/mL HDL-protein or 1 mM HDL-cholesterol.<sup>39</sup>

Importantly, the different HDL concentrations eliciting given cellular responses in specific cell types may point to different mechanism of action. Responses that are elicited at low concentrations may be mediated by interactions of HDL with specific receptors (e.g. SR-BI, S1P receptors), while responses to high HDL concentrations could be receptor-independent, as a consequence for example of alterations in cellular cholesterol homeostasis resulting from aqueous diffusion of cholesterol from the plasma membrane to HDL particles.<sup>29</sup> Discrepant responses to HDLs in different beta-cell types, e.g. primary cells from human or murine islets, rat (INS1E) or mouse (MIN6) insulinomas, in the context of different stress stimuli (e.g. thapsigargin, tunicamycin, cytokines, LDLs) may point to different modes of action and mechanisms elicited by HDLs.

In experiments using lipid-free ApoA-I, a wide range of concentrations has also been used: 10 µg/mL (2 µM) to 900 mg/L (32 µM). However, in this case, only the lower concentration appears to reflect physiological situations. Higher concentrations correspond to total plasmatic ApoA-I that is both lipid-free and lipid-bound. However, only 5–10% of total plasma ApoA-I occurs in a lipid-free form which, by its electrophoretic preβ1-mobility, can be differentiated from the lipidated ApoA-I of the α- or even pre-α-migrating HDL particles.<sup>40,41</sup> In extravascular and interstitial fluids, the proportion of preβ1-HDL (i.e. lipid-free ApoA-I) is higher than in plasma but does not amount to 100% of total ApoA-I<sup>42</sup> and is diluted when compared with plasma (because the HDL concentration

in the extravascular space is lower than in plasma; see above). Moreover, due to its much smaller structural heterogeneity, cellular responses to lipid-free ApoA-I appear to be initiated by less diverse mechanisms than responses to the highly heterogeneous HDL particles: as yet only ATP-binding cassette sub-family A member 1 (ABCA1) and the ectopic  $\beta$ -chain of the  $F_0F_1$  ATPase have been identified as cell proteins interacting with lipid-free ApoA-I.<sup>43–45</sup> In these cases, these interactions could be detected at rather low ApoA-I concentrations (10–30  $\mu\text{g}/\text{mL}$ ) in all cell types, but beta cells where 10-fold higher concentrations were used to enhance glucose-stimulated insulin secretion.<sup>46</sup>

## 5. High-density lipoproteins are potent beta-cell protectors

The majority of data reporting a beneficial effect of HDLs in beta cells concern their survival. Numerous studies have indeed shown that HDLs are very efficient in inhibiting apoptosis of beta cells. *Figure 2* reports the capacity of HDLs to counteract beta-cell death induced by a variety of stimuli. These include inflammatory cytokines, free fatty acids (e.g. palmitate), thapsigargin, tunicamycin, protein overexpression, etc. Many of these stimuli induce endoplasmic reticulum (ER) stress. As ER stress has been proposed to be a driving parameter in beta-cell dysfunction and death in the course of diabetes development,<sup>59–61</sup> the capacity of HDLs to protect beta cells from ER stressors could be one mechanism underlying their potential ability to prevent type 2 diabetes (see below).

As can be seen in *Figure 2*, the beta-cell protective concentrations of HDLs are around 1 mM HDL-cholesterol in most cases. In Min6 cells, the protection against thapsigargin and tunicamycin decreases at lower HDL concentrations,<sup>52</sup> indicating that 1 mM HDL-cholesterol is the optimal protective concentration in these particular conditions. Interestingly, however, about 10 times lower amounts of HDLs were necessary to inhibit thapsigargin-induced apoptosis in the rat INS1e insulinoma cell line. Maximal anti-apoptotic effects were seen at HDL-protein concentrations as low as 100 mg/L (corresponding to 0.12 mM HDL-cholesterol) (Annema and von Eckardstein, unpublished results). Whether this is a reflection of different mechanisms of protection in INS1 cells compared with other insulinoma cells remains to be determined. Protection of rat beta cells against LDL-mediated death by doses that are 100-fold lower than 1 mM HDL-cholesterol<sup>56</sup> (*Figure 2*) is an odd, and as yet not reproduced, observation.

Little information is available on the molecules carried by HDLs that mediate their anti-apoptotic effect. The inhibitory effect of HDL on IL1 $\beta$ - and high glucose-induced apoptosis of primary beta cells in murine islets was found in both the protein and lipid fractions of HDLs and mimicked by both lipid-free ApoA-I (at a concentration of 20 mg/L) and S1P (at a 1  $\mu\text{M}$  concentration, which is in the upper physiological concentration range).<sup>57</sup> In contrast, the components mediating the protective effect of HDLs against the ER stressors thapsigargin, tunicamycin, palmitic acid, and oxidized LDL have not yet been identified.

In the previous paragraph, we have proposed that responses induced by mM ranges of cholesterol could be HDL receptor-independent. SR-BI, the HDL receptor mediating, for example, eNOS activation in CHO cells and human microvascular endothelial cells,<sup>62</sup> may therefore not be involved in HDL-mediated protection of beta cells. Indeed, this has been verified experimentally. Beta cells lacking SR-BI, either as a result of gene knock-out or siRNA-mediated silencing, are protected

by HDLs as efficiently as control SR-BI-positive cells.<sup>53,57</sup> The way HDL particles engage beta cells remains therefore mysterious.

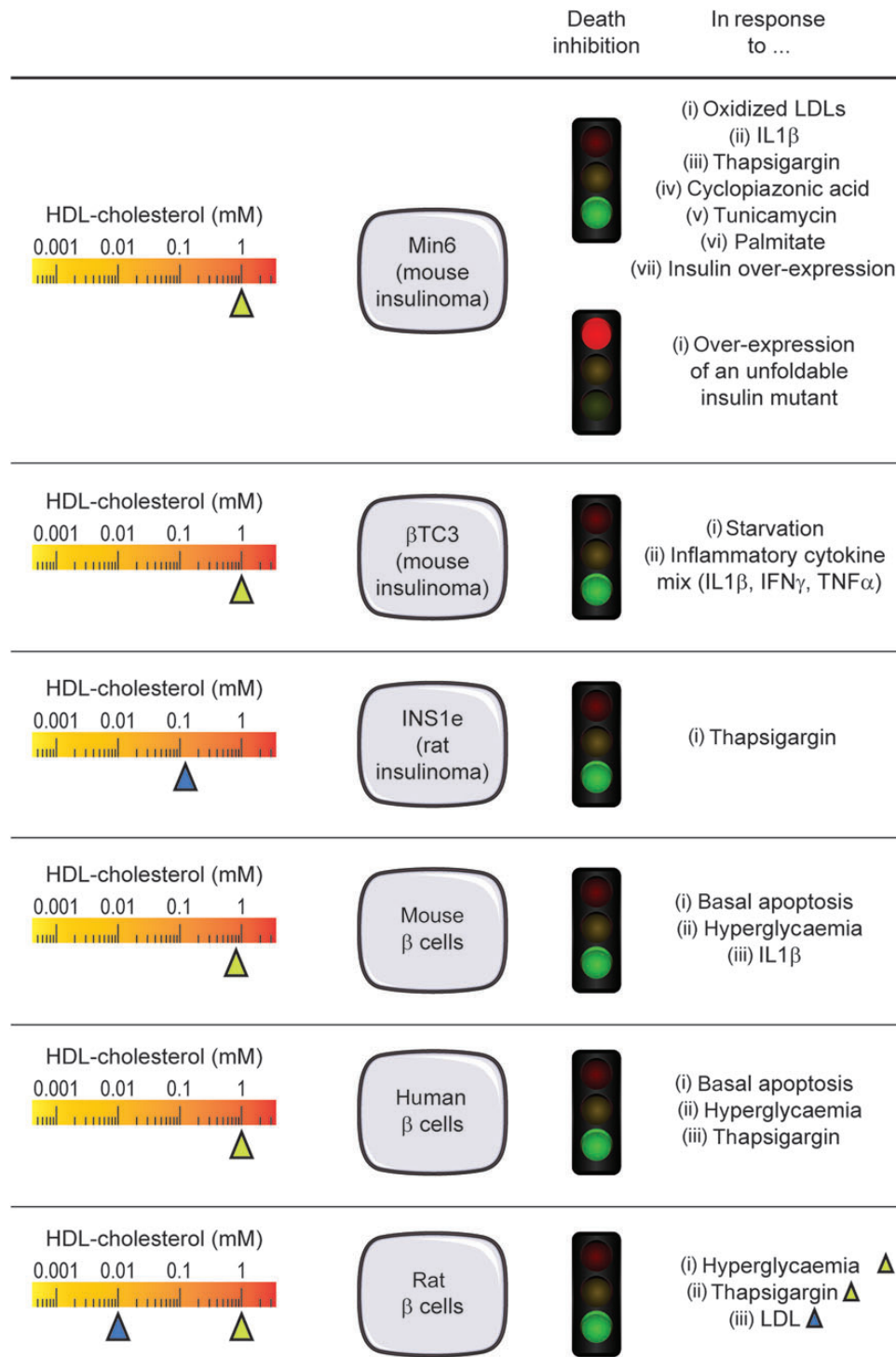
## 6. High-density lipoprotein and anti-apoptotic signalling pathways: still a black box!

How do HDLs induce their anti-apoptotic activity in beta cells? What is the signalling mode employed? Anti-apoptotic signalling pathways include NF $\kappa$ B signalling,<sup>63</sup> Akt signalling,<sup>64</sup> and the unfolded protein response (UPR), but which ones are involved in HDL-mediated beta cell protection?

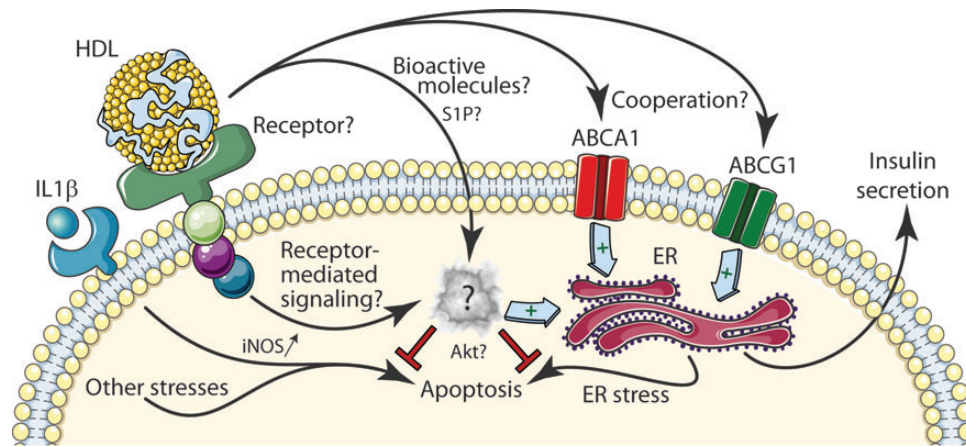
The NF $\kappa$ B transcription factors can inhibit cell death responses by inducing the expression of anti-apoptotic genes, such as those coding for inhibitor of apoptosis family members, but they can also induce pro-apoptotic genes, such as death receptors.<sup>65</sup> Hence depending on the cell type and how the cells are stimulated, NF $\kappa$ B can either promote or inhibit apoptosis. Pancreatic beta cells appear not very tolerant to NF $\kappa$ B stimulation, especially when this signalling route is sustained or strongly activated.<sup>66–68</sup> NF $\kappa$ B activation has indeed been shown to induce beta-cell apoptosis in a number of situations.<sup>69,70</sup> One could argue that these responses require a strong NF $\kappa$ B stimulation and that NF $\kappa$ B could be protective when stimulated to low extent. However, even when mildly activated, NF $\kappa$ B does not contribute to cell survival.<sup>71</sup> Therefore, NF $\kappa$ B is an unlikely target of HDLs in beta cells and indeed HDLs do not appear to stimulate this transcription factor in beta cells<sup>54</sup> (nor do they do in other cell types<sup>72</sup>).

Akt (also known as PKB) is a kinase family of proteins with powerful anti-apoptotic activities.<sup>73,74</sup> For example, the anti-apoptotic RasGAP fragment generated by the caspase-3/RasGAP stress sensing module<sup>74</sup> protects cells, including beta cells, in an Akt-dependent manner.<sup>70,75–77</sup> Other protective responses in beta cells that require Akt include those activated by Cyclin-dependent kinase 5,<sup>78</sup> Glucose metabolism-related protein 1,<sup>79</sup> Erythropoietin,<sup>80</sup> Adiponectin,<sup>81</sup> Glucose-dependent insulinotropic polypeptide,<sup>82</sup> Cxcl12,<sup>83</sup> FGF-21,<sup>84</sup> and even glucose itself.<sup>85</sup> It has to be noted that Akt activation can, in some situations, lead to beta cells death. For example, palmitate appears to require Akt to induce apoptosis in the rat insulinoma INS-1 cell line.<sup>86</sup> Additionally, forced expression of a constitutive active Akt mutant in INS-1 cells causes their death, unless NF $\kappa$ B is inhibited.<sup>70</sup> Hence, Akt modulates beta-cell apoptosis in a context-dependent manner. Nevertheless, as Akt is involved in beta-cell survival in many instances, it is conceivable that HDLs use Akt to protect beta cells, especially since it is known that this kinase is activated by HDLs in other cell types<sup>87–90</sup> and this has, at least on one instance, shown to be required for the HDL-mediated anti-apoptotic response.<sup>91</sup> To our knowledge, there is only one published study that assessed Akt activation by HDLs in beta cells.<sup>56</sup> This was done by immuno-precipitating Akt and assessing the ability of the pulled down material to phosphorylate glycogen synthase kinase, one of the Akt substrates. Using this methodology, the authors reported an augmentation of Akt activity induced by HDLs but the data were neither quantitated nor was the number of replicated experiments mentioned. Moreover, whether Akt was involved in the protective activity of HDLs was not investigated in this study. The implication of Akt in the anti-apoptotic response mediated by HDLs remains therefore to be demonstrated (*Figure 3*).

Oxidized LDLs were reported to reduce the expression of the anti-apoptotic Bcl2 protein and induce apoptosis of MIN6 cells. This was



**Figure 2** HDLs are potent inhibitors of beta cell death. This figure depicts the effect of HDLs against apoptosis induced by the stimuli reported in the right-most column in the indicated cell types. When HDLs protect a given cell type, a green light is shown, while when there is no protection, a red light is depicted. In the left-most column, the HDL concentration used is indicated by the cursor. When the cursor is yellow, the HDL concentration used in the studies reporting the effect of HDL on beta-cell apoptosis was determined based on the cholesterol content of the particles. When the cursor is blue, this concentration was based on the protein content of the particles but was converted here back to HDL-cholesterol concentrations. Min6 cells are derived from pancreatic tumours of C57BL/6 mice expressing the SV40 large T antigen under the control of the human insulin promoter.<sup>47</sup> The  $\beta$ TC3 cell line is derived from pancreatic tumours of B6D2F1/J mice expressing the SV40 large T antigen under the control of the rat insulin II promoter.<sup>48,49</sup> INS1 cells are derived from X-ray-induced NEDH rat pancreatic tumors.<sup>50,51</sup> References for the data presented in this figure: Min6 cells<sup>52–55</sup>;  $\beta$ TC3<sup>54,56</sup>; INS1e (Annema and von Eckardstein, unpublished results); mouse  $\beta$  cells<sup>57</sup> rat  $\beta$  cells<sup>53,58</sup>; human  $\beta$  cells.<sup>53,57</sup>



**Figure 3** HDLs and beta-cell protection: a series of missing links. HDLs exert potent anti-apoptotic signals in beta cells and they may favour insulin secretion. At present, virtually nothing is known on how this is achieved at the molecular level (see the question mark inside a puff of smoke). At the cellular level, HDLs can maintain the ER functionality in response to certain types of stresses (e.g. palmitate) and thereby diminish ER stress and apoptosis. This will obviously also have a positive impact on insulin secretion but other mechanisms (e.g. cooperation with ABC transporters) can conceptually also participate in enhanced insulin secretion. Even in the presence of an ER stress can HDLs inhibit apoptosis (e.g. when cells are stimulated with the tunicamycin ER stressor). HDLs can also protect beta cells against stimuli that do not induce an ER stress response such as some inflammatory cytokines (e.g. IL1 $\beta$ ) or starvation. Whether the anti-apoptotic activity of HDLs in beta cells relies on specific receptors, whether there is a signalling cascade that is activated following binding of HDLs to their putative receptors, or whether bioactive molecules (e.g. S1P) are transferred from the HDL particle to the beta cell to mediate the protective response will need to be investigated. Note that in beta cells SR-BI, the classical HDL docking platform/receptor, is dispensable for the HDL-mediated effects.

reported to be mediated by an up-regulation of JNK [c-Jun N-terminal kinase; also known as mitogen-activated protein kinase 8 (MAPK8)] as a consequence of a decrease in the expression of islet-brain 1 (IB1; also known as MAPK8 interacting protein 1). HDL counteracted the pro-apoptotic effects of oxidized LDLs on Bcl2, JNK, and IB1. However, it has not been clarified if these anti-apoptotic effects of HDLs on the JNK pathway are exerted directly on the beta cells by interference with the apoptotic signalling or indirectly by inactivating oxidized LDLs.<sup>55</sup>

In murine islets, HDLs were found to down-regulate the extrinsic death receptor FAS and to up-regulate its inhibitor FLIP.<sup>57</sup> Additionally, IL1 $\beta$ -induced up-regulation of iNOS (inducible nitric oxide synthase) was suppressed by HDLs. However, no interference experiments were reported to show that HDLs inhibit IL1 $\beta$ -induced apoptosis through these pathways. Interestingly, the expression of Bcl-2 and SOCS-3, which are also known to inhibit apoptosis in beta cells in response to cytokines,<sup>76,92,93</sup> were not altered.<sup>57</sup>

## 7. High-density lipoprotein and the endoplasmic reticulum connection

As indicated above, many apoptotic inducers in beta cells induce ER stress which leads to the activation of a conserved physiological stress response called the UPR. The UPR is activated when the functionality of the ER is perturbed such as when too much protein misfolding in the ER takes place. The UPR consists in the activation of three main signaling arms depending on three key proteins: inositol-requiring protein 1 $\alpha$  (IRE1 $\alpha$ ), protein kinase RNA-like ER kinase (PERK), and activating transcription factor 6 (ATF6).<sup>94,95</sup> These proteins are kept inactive when binding to the Bip (GRP78) chaperone. In the presence of an ER

stress, the ER accumulates misfolded protein. Bip binds these misfolded proteins and this frees and activates IRE1 $\alpha$ , PERK, and ATF6. The initial consequence of this activation is to induce the expression of genes that will help restoring the folding capacity of the ER and the elimination of terminally misfolded proteins on the one hand and to decrease the loading of the ER with newly synthesized proteins by inhibiting global translation on the other hand.<sup>94,95</sup> If this 'repair' phase fails, the UPR eventually activates an apoptotic response leading to the elimination of the non-functioning cell.<sup>94,95</sup> The initial phase of the UPR may also be involved in physiological adaptation to metabolic changes and in several differentiation and cellular activation processes.<sup>94</sup>

Many of the apoptotic stimuli that can be counteracted by HDLs (Figure 2) are able to induce ER stress. This raises the possibility that HDL modulate such ER stress responses to exert their protective function in beta cells. Recent data show this to be true in certain cases but not in others.<sup>52,53</sup>

Thapsigargin is an irreversible inhibitor of SERCA (sarco/ER Ca<sup>2+</sup>-ATPase), an ER-associated calcium pump.<sup>96</sup> SERCA inhibition leads to disruption of the calcium gradient between the ER and the cytoplasm and this causes profound ER stress as assessed by increased activation of IRE1, PERK, and ATF6.<sup>53,97–100</sup> HDLs were found to fully block thapsigargin-induced apoptosis of beta cells, with a concomitant inhibition of UPR activation and restoration of the capacity of the ER to fold proteins and to export them further down the secretory pathway.<sup>53</sup> Blocking trafficking between the ER and the Golgi with Brefeldin A prevented HDLs from inhibiting thapsigargin-induced beta-cell death.<sup>53</sup> This is an indication that HDLs need to preserve the functionality of the ER to counteract the apoptotic response induced by thapsigargin. However, since Brefeldin A can affect cell activity and viability on its own,<sup>101–104</sup> this interpretation should be taken with caution. Palmitate, a patho-physiological relevant pro-diabetogenic compound,

induced, similarly to thapsigargin, the activation of the UPR.<sup>53,105</sup> In this case too, HDLs fully prevented stimulation of ER stressors and apoptosis induced by palmitate and they maintained the functionality of the ER in terms of protein folding and protein trafficking.<sup>53</sup> These results suggest that HDLs protect beta cells by allowing them to retain a functional ER despite the presence of stressful conditions, an obviously clear benefit for professional secretory cells that beta cells are (Figure 3).

Is the capacity of HDLs to maintain ER functionality its only mode of protection in beta cells? The answer to this question is certainly no. First, some apoptotic stimuli, such as starvation or even basal apoptosis, which are counteracted by HDLs, have not been reported to induce an ER stress response. Second, HDLs, while blocking beta-cell death induced by the ER stressor tunicamycin, does not modulate the UPR response activated by tunicamycin. In other words, HDLs inhibit tunicamycin-induced beta-cell apoptosis without a significant reduction in the induction of stress markers (such as Xbp1 splicing, Bip expression, PERK activation, and CHOP induction).<sup>52</sup> In this case, it can be concluded that the protection conferred by HDLs occurs distally to the UPR (Figure 3). HDLs therefore use multiple routes of protection in beta cells, including one that maintains the functionality of the ER.

## 8. Other beneficial effects of high-density lipoproteins in beta cells

Besides protecting beta cells from death, HDLs may also favour their survival and function by augmenting their proliferation or their insulin secretory capacity.<sup>22</sup> Whereas a stimulatory effect of HDL on beta-cell proliferation was ruled out,<sup>57</sup> *in vivo* and *in vitro* evidence has been provided for stimulation of insulin production and secretion. Infusion of reconstituted HDLs in type 2 diabetes patients increased their HOMA-B index, an indirect measurement of pancreatic beta-cell function.<sup>106</sup> Also, the treatment of healthy volunteers for 2 weeks with an inhibitor of cholesteryl ester transfer protein (CETP) was found to increase postprandial insulin and C-peptide levels.<sup>107</sup> Treatment with a CETP inhibitor (CETPi) increased plasma HDL-cholesterol by 46% and HDL-associated ApoA-I by 22% as well as insulin levels by 30% when compared with placebo. The plasma of CETPi-treated volunteers had an increased capacity to stimulate cholesterol efflux and glucose-stimulated insulin secretion from the MIN6 cell. The CETPi itself did not stimulate insulin secretion leading the authors to conclude that the improved secretory potential was caused by an increase in HDL particle size and/or concentration.<sup>107</sup> This small short-term study in normolipidaemic and euglycaemic volunteers mirrors the results of a *post hoc* analysis of the large ILLUMINATE trial.<sup>108</sup> In this randomized controlled endpoint study, the CETPi torcetrapib was found to increase cardiovascular mortality and morbidity of statin-treated patients despite substantial increase in HDL-cholesterol levels, possibly due to off-target effects on aldosterone production and blood pressure. In a *post hoc* analysis of a sub-group of diabetic ILLUMINATE participants, atorvastatin + placebo treatment led to an increase in glucose and HbA1c levels which were not observed in the atorvastatin + torcetrapib treated probands.<sup>108</sup>

*In vitro* data on the effects of HDL or ApoA-I on insulin secretion are however controversial. HDL-treated βTC3 cells and MIN6 cells were found to express more insulin mRNA than untreated control cells.<sup>55,56</sup> Stimulation of the Min6 insulinoma cell line for 1 h with 4–32 μM lipid-free recombinant ApoA-I, ApoA-II, or discoidal

reconstituted HDLs dose-dependently increased both basal and glucose-stimulated insulin secretion.<sup>46</sup> The supraphysiological dosages of 32 μM increased basal and glucose-stimulated insulin secretion by a factor of 4 and 3, respectively. A concentration of 1 mg/mL HDL-protein (~1.2 mM HDL-cholesterol) led to a doubling of insulin secretion but this particular experiment was only performed once.<sup>46</sup> By RNA interference, the authors showed that the stimulatory effect of lipid-free ApoA-I and reconstituted HDLs on insulin secretion depended on ATP-binding cassette (ABC) transporters A1 and G1, respectively.<sup>46</sup>

Min6 cells incubated 3 days with 50 μg/mL HDL-protein (~60 μM HDL-cholesterol) boosted acute glucose-induced insulin secretion by approximately six-fold.<sup>106</sup> However, it is not clear how specific this HDL effect on insulin secretion is. Bovine serum albumin was able to increase glucose-stimulated insulin secretion in Min6 cells (50–60% more than glucose alone),<sup>46</sup> indicating that the mere presence of proteins can positively affect insulin secretion by Min6 cells. Taking into consideration an earlier study reporting no effect of HDLs (0.8–1 mM HDL-cholesterol) on basal or glucose-stimulated insulin secretion by mouse and human islet cells,<sup>57</sup> it appears premature to conclude that HDLs have a direct effect on the insulin secretory capacity of beta cells. In this context, a hyperinsulinaemic euglycaemic clamp in human individuals injected or not with reconstituted HDLs would be particularly informative.

Although the stimulatory effect of HDL on insulin secretion is still controversial, there is good evidence that the ABC transporters ABCA1 and ABCG1 modulate insulin secretion from pancreatic beta cells. These transporters mediate cholesterol efflux, in cells such as macrophages for example, in the presence of lipid-free apolipoproteins (ApoA-I in particular) and HDLs, respectively.<sup>109,110</sup> However, we will see that in beta cells, ABCA1 favours insulin secretion by promoting cholesterol efflux while ABCG1 does so by inducing cholesterol transfer to insulin granules. The evidence for these notions has been generated both *in vivo* and *in vitro*. Mice with a targeted knock-out of ABCA1 in pancreatic beta cells and cross-bred with LDL-receptor knock-out mice to induce hypercholesterolaemia were found to be less glucose tolerant than LDL receptor knock-out only mice.<sup>111</sup> The beta cell-specific ABCA1 knock-out mice also showed reduced insulin secretion in response to glucose administration. Islets isolated from these mice showed altered cholesterol homeostasis and impaired insulin secretion *in vitro*.<sup>111</sup> Later studies by the same group showed that the lack of β-cell ABCA1 results in impaired depolarization-induced exocytotic fusion of insulin granules, disturbances in membrane micro-domain organization, and alteration in Golgi and insulin granule morphology. Acute cholesterol depletion rescued the exocytotic defect in β-cells lacking ABCA1, suggesting that elevated islet cholesterol accumulation directly impairs granule fusion and insulin secretion.<sup>112</sup> *In vitro*, adenoviral overexpression in beta cells of microRNAs 33a and 145 (miR-33a and miR145), which target ABCA1, led to increased cholesterol levels and to decreased glucose-stimulated insulin secretion.<sup>113,114</sup> This compromised insulin secretion was again rescued by cholesterol depletion. Inhibition of miR-33a expression in apolipoprotein E knock-out islets and ABCA1 overexpression in β-cell-specific ABCA1 knock-out islets rescued normal insulin secretion and reduced islet cholesterol.<sup>114</sup> Therefore, cholesterol seems to be one of the bad guys negatively affecting beta-cell function. However, the situation is much more complex than this simple interpretation. Indeed, mice lacking another cholesterol transporter, ABCG1, were also found to be glucose-intolerant due to reduced insulin secretion, but this resulted from an inefficient transfer of cholesterol to insulin granules, which negatively impacted on their

beta-cell insulin secretory capacity.<sup>115</sup> These defects could be rescued by exogenous addition of cholesterol.<sup>115</sup> Hence, when beta cells lack ABCA1, the ensuing insulin secretion dysfunctionality can be alleviated by depleting cells from cholesterol. Yet, when beta cells lack ABCG1, insulin secretion is restored by exogenous addition of cholesterol. These studies show that a delicate balance of cholesterol concentrations between different sub-cellular compartments must be achieved to allow optimal beta-cell functionality. Whether HDLs cooperate with ABCA1 or ABCG1 to induce their cellular effects in beta cells is unknown (Figure 3).

As expected from the data presented above, the ABCA1 and ABCG1 cholesterol transporters play non-redundant functions in beta-cell activity. Combined deficiency of ABCA1 and ABCG1 aggravated the diabetic phenotype found in the single knock-out animals.<sup>116</sup> This also resulted in significant cholesterol accumulation in beta cells. Islet inflammation was also increased as indicated by augmented expression of interleukin-1 $\beta$  and macrophage infiltration.<sup>116</sup>

Taken together, these findings indicate that cholesterol homeostasis and its regulation by ABCA1 and ABCG1 are critical for the secretory  $\beta$ -cell function. The relevance of these findings in humans is unclear however. On the one hand, decreased glucose-induced insulin secretion is reported in ABCA1-deficient patients with Tangier disease or heterozygous carriers of ABCA1 mutations.<sup>117,118</sup> On the other hand, mutations in ABCA1 have not been associated with increased risk of diabetes.<sup>119</sup> Nevertheless, data on the role of ABCA1 and ABCG1 may be of special importance for patients treated with statins, which appear to interfere with insulin secretion by inhibiting the production of cholesterol for granules as well as sterol intermediates which are important for insulin secretion, and by enhancing the uptake of LDL.<sup>21,120</sup>

## 9. Conclusion

The beneficial effect of HDLs on beta cells is undisputable. Numerous studies have shown that HDLs induce potent anti-apoptotic signals in beta cells stressed by a plethora of stressful stimuli. HDLs may also favour their insulin secretory function. In humans, there is a strong association with low HDL levels and an increase in the risk of developing several diseases, including type 2 diabetes. While it is clear that HDLs induce protective signals in beta cells, our knowledge on the molecular mechanisms underlying the beneficial functions of HDLs in beta cells is at best rudimentary. We need now to invest time and resources to decipher the protective signalling pathways activated by HDLs in beta cells. Not only will this increase our fundamental understanding on how pancreatic beta cells can be spared from stress-induced death, this may also lead to the identification of markers associated with diabetes development, with the hope that some of which can be used as prognostic markers. Finally, knowing exactly how beta cells are protected by HDLs is a pre-requisite for the development of drugs that stimulate or mimic the anti-diabetic effects of HDLs in order to lower the risk, for example in overweight patients, to manifest this disease.

## Acknowledgements

A.v.E. and C.W. are members of the European Cooperation in Science and Technology (COST) Action 'HDLnet' (BM904).

**Conflict of interest:** none declared.

## Funding

The research of A.v.E. on HDL and beta cells is supported by grants from the 7th Framework Program of the European Commission ('RESOLVE'; Project number 305707) and Theodor und Ida Herzog-Egli Stiftung.

## References

- Inzucchi SE. Clinical practice. Diagnosis of diabetes. *N Engl J Med* 2012;**367**:542–550.
- Lozano R, Naghavi M, Foreman K, Lim S, Shibuya K, Aboyans V, Abraham J, Adair T, Aggarwal R, Ahn SY, Alvarado M, Anderson HR, Anderson LM, Andrews KG, Atkinson C, Baddour LM, Barker-Collo S, Bartels DH, Bell ML, Benjamin EJ, Bennett D, Bhalla K, Bikbov B, Bin AA, Birbeck G, Blyth F, Bolliger I, Boufous S, Bucello C, Burch M, Burney P, Carapetis J, Chen H, Chou D, Chugh SS, Coffeng LE, Colan SD, Colquhoun S, Colson KE, Condon J, Connor MD, Cooper LT, Corriere M, Cortinovis M, de Vaccaro KC, Couser W, Cowie BC, Criqui MH, Cross M, Dabhadkar KC, Dahodwala N, De LD, Degenhardt L, Delossantos A, Denenberg J, Des Jarlais DC, Dharmaratne SD, Dorsey ER, Driscoll T, Duber H, Ebel B, Erwin PJ, Espindola P, Ezzati M, Feigin V, Flaxman AD, Forouzanfar MH, Fowkes FG, Franklin R, Fransen M, Freeman MK, Gabriel SE, Gakidou E, Gaspari F, Gillum RF, Gonzalez-Medina D, Halasa YA, Haring D, Harrison JE, Havmoeller R, Hay RJ, Hoen B, Hotez PJ, Hoy D, Jacobsen KH, James SL, Jasrasaria R, Jayaraman S, Johns N, Karthikeyan G, Kassebaum N, Keren A, Khoo JP, Knowlton LM, Kobusingye O, Koranteng A, Krishnamurthi R, Lipnick M, Lipshultz SE, Ohno SL, Mabwilingano J, MacIntyre MF, Mallinger L, March L, Marks GB, Marks R, Matsumori A, Matzopoulos R, Mayosi BM, McAnulty JH, McDermott MM, McGrath J, Mensah GA, Merriman TR, Michaud C, Miller M, Miller TR, Mock C, Mocumbi AO, Mokdad AA, Moran A, Mulholland K, Nair MN, Naldi L, Narayan KM, Nasseri K, Norman P, O'Donnell M, Omer SB, Ortblad K, Osborne R, Ozgediz D, Pahari B, Pandian JD, Rivero AP, Padilla RP, Perez-Ruiz F, Perico N, Phillips D, Pierce K, Pope CA III, Porrini E, Pourmalek F, Raju M, Ranganathan D, Rehm JT, Rein DB, Remuzzi G, Rivara FP, Roberts T, De Leon FR, Rosenfeld LC, Rushton L, Sacco RL, Salomon JA, Sampson U, Sanman E, Schwebel DC, Segui-Gomez M, Shepard DS, Singh D, Singleton J, Sliwa K, Smith E, Steer A, Taylor JA, Thomas B, Tleyjeh IM, Towbin JA, Truelsen T, Undurraga EA, Venketasubramanian N, Vijayakumar L, Vos T, Wagner GR, Wang M, Wang W, Watt K, Weinstock MA, Weintraub R, Wilkinson JD, Woolf AD, Wulf S, Yeh PH, Yip P, Zabotian A, Zheng ZJ, Lopez AD, Murray CJ, AlMazroa MA, Memish ZA. Global and regional mortality from 235 causes of death for 20 age groups in 1990 and 2010: a systematic analysis for the Global Burden of Disease Study 2010. *Lancet* 2012;**380**:2095–2128.
- Sattar N, Preiss D, Murray HM, Welsh P, Buckley BM, de Craen AJ, Seshasai SR, McMurray JJ, Freeman DJ, Jukema JW, Macfarlane PW, Packard CJ, Stott DJ, Westendorp RG, Shepherd J, Davis BR, Pressel SL, Marchionni R, Marfisi RM, Maggioni AP, Tavazzi L, Tognoni G, Kjekshus J, Pedersen TR, Cook TJ, Gotto AM, Clearfield MB, Downs JR, Nakamura H, Ohashi Y, Mizuno K, Ray KK, Ford I. Statins and risk of incident diabetes: a collaborative meta-analysis of randomised statin trials. *Lancet* 2010;**375**:735–742.
- Preiss D, Seshasai SR, Welsh P, Murphy SA, Ho JE, Waters DD, DeMicco DA, Barter P, Cannon CP, Sabatine MS, Braunwald E, Kastelein JJ, de Lemos JA, Blazing MA, Pedersen TR, Tikkanen MJ, Sattar N, Ray KK. Risk of incident diabetes with intensive-dose compared with moderate-dose statin therapy: a meta-analysis. *JAMA* 2011;**305**:2556–2564.
- Waters DD, Ho JE, Boekholdt SM, DeMicco DA, Kastelein JJ, Messig M, Breazna A, Pedersen TR. Cardiovascular event reduction versus new-onset diabetes during atorvastatin therapy: effect of baseline risk factors for diabetes. *J Am Coll Cardiol* 2013;**61**:148–152.
- Karadag MK, Akbulut M. Low HDL levels as the most common metabolic syndrome risk factor in heart failure. *Int Heart J* 2009;**50**:571–580.
- Rahilly-Tierney CR, Spiro A III, Vokonas P, Gaziano JM. Relation between high-density lipoprotein cholesterol and survival to age 85 years in men (from the VA normative aging study). *Am J Cardiol* 2011;**107**:1173–1177.
- Acharjee S, Boden WE, Hartigan PM, Teo KK, Maron DJ, Sedlis SP, Kostuk W, Spertus JA, Dada M, Chaitman BR, Mancini GB, Weintraub WS. Low levels of high-density lipoprotein cholesterol and increased risk of cardiovascular events in stable ischemic heart disease patients: a post-hoc analysis from the COURAGE Trial (Clinical Outcomes Utilizing Revascularization and Aggressive Drug Evaluation). *J Am Coll Cardiol* 2013;**62**:1826–1833.
- Barter P, Gotto AM, LaRosa JC, Maroni J, Szarek M, Grundy SM, Kastelein JJ, Bittner V, Fruchart JC. HDL cholesterol, very low levels of LDL cholesterol, and cardiovascular events. *N Engl J Med* 2007;**357**:1301–1310.
- von Eckardstein A, Schulte H, Assmann G. Risk for diabetes mellitus in middle-aged Caucasian male participants of the PROCAM study: implications for the definition of impaired fasting glucose by the American Diabetes Association. *J Clin Endocrinol Metab* 2000;**85**:3101–3108.
- Montonen J, Drogan D, Joost HG, Boeing H, Fritsche A, Schleicher E, Schulze MB, Pischon T. Estimation of the contribution of biomarkers of different metabolic pathways to risk of type 2 diabetes. *Eur J Epidemiol* 2011;**26**:29–38.



12. Wilson PW, Meigs JB, Sullivan L, Fox CS, Nathan DM, D'Agostino RB Sr. Prediction of incident diabetes mellitus in middle-aged adults: the Framingham Offspring Study. *Arch Intern Med* 2007;**167**:1068–1074.
13. Abbasi A, Corpeleijn E, Gansevoort RT, Gans RO, Hillege HL, Stolck RP, Navis G, Bakker SJ, Dullaart RP. Role of HDL cholesterol and estimates of HDL particle composition in future development of type 2 diabetes in the general population: the PREVENT study. *J Clin Endocrinol Metab* 2013;**98**:E1352–E1359.
14. Hersberger M, von Eckardstein A. Low high-density lipoprotein cholesterol: physiological background, clinical importance and drug treatment. *Drugs* 2003;**63**:1907–1945.
15. Di Angelantonio E, Sarwar N, Perry P, Kaptoge S, Ray KK, Thompson A, Wood AM, Lewington S, Sattar N, Packard CJ, Collins R, Thompson SG, Danesh J. Major lipids, apolipoproteins, and risk of vascular disease. *JAMA* 2009;**302**:1993–2000.
16. Boekholdt SM, Arsenault BJ, Hovingh GK, Mora S, Pedersen TR, LaRosa JC, Welch KM, Amarencu P, DeMicco DA, Tonkin AM, Sullivan DR, Kirby A, Colhoun HM, Hitman GA, Betteridge DJ, Durrington PN, Clearfield MB, Downs JR, Gotto AM Jr, Ridker PM, Kastelein JJ. Levels and changes of HDL cholesterol and apolipoprotein A-I in relation to risk of cardiovascular events among statin-treated patients: a meta-analysis. *Circulation* 2013;**128**:1504–1512.
17. Li N, Fu J, Koonen DP, Kuivenhoven JA, Snieder H, Hofker MH. Are hypertriglyceridemia and low HDL causal factors in the development of insulin resistance? *Atherosclerosis* 2014;**233**:130–138.
18. Aranda JF, Madrigal-Matute J, Rotllan N, Fernandez-Hernando C. MicroRNA modulation of lipid metabolism and oxidative stress in cardiometabolic diseases. *Free Radic Biol Med* 2013;**64**:31–39.
19. Rayner KJ, Moore KJ. MicroRNA control of high-density lipoprotein metabolism and function. *Circ Res* 2014;**114**:183–192.
20. Wang Y, Oram JF. Unsaturated fatty acids phosphorylate and destabilize ABCA1 through a protein kinase C $\delta$  pathway. *J Lipid Res* 2007;**48**:1062–1068.
21. von Eckardstein A, Sibling RA. Possible contributions of lipoproteins and cholesterol to the pathogenesis of diabetes mellitus type 2. *Curr Opin Lipidol* 2011;**22**:26–32.
22. Drew BG, Rye KA, Duffy SJ, Barter P, Kingwell BA. The emerging role of HDL in glucose metabolism. *Nat Rev Endocrinol* 2012;**8**:237–245.
23. de Haan W, Bhattacharjee A, Ruddle P, Kang MH, Hayden MR. ABCA1 in adipocytes regulates adipose tissue lipid content, glucose tolerance, and insulin sensitivity. *J Lipid Res* 2014;**55**:516–523.
24. Umemoto T, Han CY, Mitra P, Averill MM, Tang C, Goodspeed L, Omer M, Subramanian S, Wang S, Den Hartigh LJ, Wei H, Kim EJ, Kim J, O'Brien KD, Chait A. Apolipoprotein AI and high-density lipoprotein have anti-inflammatory effects on adipocytes via cholesterol transporters: ATP-binding cassette A-1, ATP-binding cassette G-1, and scavenger receptor B-1. *Circ Res* 2013;**112**:1345–1354.
25. Carey AL, Siebel AL, Reddy-Luthmoodoo M, Natoli AK, D'Souza W, Meikle PJ, Swiridov D, Drew BG, Kingwell BA. Skeletal muscle insulin resistance associated with cholesterol-induced activation of macrophages is prevented by high density lipoprotein. *PLoS ONE* 2013;**8**:e56601.
26. Dalla-Riva J, Stenkula KG, Petrlova J, Lagerstedt JO. Discoidal HDL and apoA-I-derived peptides improve glucose uptake in skeletal muscle. *J Lipid Res* 2013;**54**:1275–1282.
27. Lehti M, Donelan E, Abplanalp W, Al-Massadi O, Habegger KM, Weber J, Ress C, Mansfeld J, Somvanshi S, Trivedi C, Keuper M, Ograjsek T, Striese C, Cucuruz S, Pfluger PT, Krishna R, Gordon SM, Silva RA, Luquet S, Castel J, Martinez S, D'Alessio D, Davidson WS, Hofmann SM. High-density lipoprotein maintains skeletal muscle function by modulating cellular respiration in mice. *Circulation* 2013;**128**:2364–2371.
28. Kingwell BA, Chapman MJ. Future of high-density lipoprotein infusion therapies: potential for clinical management of vascular disease. *Circulation* 2013;**128**:1112–1121.
29. Annema W, von Eckardstein A. High-density lipoproteins. Multifunctional but vulnerable protections from atherosclerosis. *Circ J* 2013;**77**:2432–2448.
30. Vickers KC, Palmisano BT, Shoucri BM, Shamburek RD, Remaley AT. MicroRNAs are transported in plasma and delivered to recipient cells by high-density lipoproteins. *Nat Cell Biol* 2011;**13**:423–433.
31. Regazzi R, Widmann C. Genetics and molecular biology: miRNAs take the HDL ride. *Curr Opin Lipidol* 2012;**23**:165–166.
32. Frias MA, James RW, Gerber-Wicht C, Lang U. Native and reconstituted HDL activate Stat3 in ventricular cardiomyocytes via ERK1/2: role of sphingosine-1-phosphate. *Cardiovasc Res* 2009;**82**:313–323.
33. Nofer JR, van der GM, Tolle M, Wolinska I, von Wnuck LK, Baba HA, Tietge UJ, Godecke A, Ishii I, Kleuser B, Schafers M, Fobker M, Zidek W, Assmann G, Chun J, Levkau B. HDL induces NO-dependent vasorelaxation via the lysophospholipid receptor S1P3. *J Clin Invest* 2004;**113**:569–581.
34. Chapman MJ. Comparative analysis of mammalian plasma lipoproteins. *Methods Enzymol* 1986;**128**:70–143.
35. Nanjee MN, Cooke CJ, Wong JS, Hamilton RL, Olszewski WL, Miller NE. Composition and ultrastructure of size subclasses of normal human peripheral lymph lipoproteins: quantification of cholesterol uptake by HDL in tissue fluids. *J Lipid Res* 2001;**42**:639–648.
36. Busso N, Dudler J, Salvi R, Peclat V, Lenain V, Marcovina S, Darioli R, Nicod P, So AK, Mooser V. Plasma apolipoprotein(a) co-deposits with fibrin in inflammatory arthritic joints. *Am J Pathol* 2001;**159**:1445–1453.
37. Jaspard B, Fournier N, Veitez G, Atger V, Barbaras R, Vieu C, Manent J, Chap H, Perret B, Collet X. Structural and functional comparison of HDL from homologous human plasma and follicular fluid. A model for extravascular fluid. *Arterioscler Thromb Vasc Biol* 1997;**17**:1605–1613.
38. Bloom MS, Kim K, Fujimoto VY, Browne RW. Variability in the components of high-density lipoprotein particles measured in human ovarian follicular fluid: a cross-sectional analysis. *Fertil Steril* 2014;**101**:1431–1440.
39. Krstic RV. *Human Microscopic Anatomy*. Berlin: Springer-Verlag; 1994.
40. von Eckardstein A, Huang Y, Kastelein JJ, Geisel J, Real JT, Kuivenhoven JA, Miccolli R, Nosedà G, Assmann G. Lipid-free apolipoprotein (apo) A-I is converted into alpha-migrating high density lipoproteins by lipoprotein-depleted plasma of normolipidemic donors and apo A-I-deficient patients but not of Tangier disease patients. *Atherosclerosis* 1998;**138**:25–34.
41. Huang Y, DiDonato JA, Levison BS, Schmitt D, Li L, Wu Y, Buffa J, Kim T, Gerstenecker GS, Gu X, Kadiyala CS, Wang Z, Culley MK, Hazen JE, Didonato AJ, Fu X, Berisha SZ, Peng D, Nguyen TT, Liang S, Chuang CC, Cho L, Plow EF, Fox PL, Gogonea V, Tang WH, Parks JS, Fisher EA, Smith JD, Hazen SL. An abundant dysfunctional apolipoprotein A1 in human atheroma. *Nat Med* 2014;**20**:193–203.
42. Lee M, Sommerhoff CP, von EA, Zettl F, Fritz H, Kovanic PT. Mast cell tryptase degrades HDL and blocks its function as an acceptor of cellular cholesterol. *Arterioscler Thromb Vasc Biol* 2002;**22**:2086–2091.
43. Cavellier C, Lorenzi I, Rohrer L, von Eckardstein A. Lipid efflux by the ATP-binding cassette transporters ABCA1 and ABCG1. *Biochim Biophys Acta* 2006;**1761**:655–666.
44. Vantourout P, Radojkovic C, Lichtenstein L, Pons V, Champagne E, Martinez LO. Ecto-F<sub>1</sub>-ATPase: a moonlighting protein complex and an unexpected apoA-I receptor. *World J Gastroenterol* 2010;**16**:5925–5935.
45. Cavellier C, Ohnsorg PM, Rohrer L, von Eckardstein A. The  $\beta$ -chain of cell surface F<sub>0</sub>F<sub>1</sub> ATPase modulates ApoA-I and HDL transcytosis through aortic endothelial cells. *Arterioscler Thromb Vasc Biol* 2012;**32**:131–139.
46. Fryirs MA, Barter PJ, Appavoo M, Tuch BE, Tabet F, Heather AK, Rye KA. Effects of high-density lipoproteins on pancreatic beta-cell insulin secretion. *Arterioscler Thromb Vasc Biol* 2010;**30**:1642–1648.
47. Miyazaki J, Araki K, Yamato E, Ikegami H, Asano T, Shibasaki Y, Oka Y, Yamamura K. Establishment of a pancreatic beta cell line that retains glucose-inducible insulin secretion: special reference to expression of glucose transporter isoforms. *Endocrinology* 1990;**127**:126–132.
48. Hanahan D. Heritable formation of pancreatic beta-cell tumours in transgenic mice expressing recombinant insulin/simian virus 40 oncogenes. *Nature* 1985;**315**:115–122.
49. Efrat S, Linde S, Kofod H, Spector D, Delannoy M, Grant S, Hanahan D, Baekkeskov S. Beta-cell lines derived from transgenic mice expressing a hybrid insulin gene-oncogene. *Proc Natl Acad Sci USA* 1988;**85**:9037–9041.
50. Chick WL, Warren S, Chute RN, Like AA, Lauris V, Kitchen KC. A transplantable insulinoma in the rat. *Proc Natl Acad Sci USA* 1977;**74**:628–632.
51. Asfari M, Janjic D, Meda P, Li G, Halban PA, Wollheim CB. Establishment of 2-mercaptoethanol-dependent differentiated insulin-secreting cell lines. *Endocrinology* 1992;**130**:167–178.
52. Puyal J, Petremand J, Dubuis G, Rummel C, Widmann C. HDLs protect the MIN6 insulinoma cell line against tunicamycin-induced apoptosis without inhibiting ER stress and without restoring ER functionality. *Mol Cell Endocrinol* 2013;**381**:291–301.
53. Petremand J, Puyal J, Chatton JY, Duprez J, Allagnat F, Frias M, James RW, Waeber G, Jonas JC, Widmann C. HDLs protect pancreatic beta-cells against ER stress by restoring protein folding and trafficking. *Diabetes* 2012;**61**:1100–1111.
54. Petremand J, Bulat N, Butty AC, Poussin C, Rutti S, Au K, Ghosh S, Mooser V, Thorens B, Yang J-Y, Widmann C, Waeber G. Involvement of 4E-BP1 in the protection induced by HDL on pancreatic beta cells. *Mol Endocrinol* 2009;**23**:1572–1586.
55. Abderrahmani A, Niederhauser G, Favre D, Abdelli S, Ferdaoussi M, Yang J-Y, Regazzi R, Widmann C, Waeber G. Human high-density lipoprotein particles prevent activation of the JNK pathway induced by human oxidised low-density lipoprotein particles in pancreatic beta cells. *Diabetologia* 2007;**50**:1304–1314.
56. Roehrich ME, Mooser V, Lenain V, Herz J, Nimpf J, Azhar S, Bideau M, Capponi A, Nicod P, Haefliger JA, Waeber G. Insulin-secreting  $\beta$ -cell dysfunction induced by human lipoproteins. *J Biol Chem* 2003;**278**:18368–18375.
57. Rutti S, Ehses JA, Sibling RA, Prazak R, Rohrer L, Georgopoulos S, Meier DT, Niclaus N, Berney T, Donath MY, von Eckardstein A. Low and high-density lipoproteins modulate function, apoptosis and proliferation of primary human and murine pancreatic beta cells. *Endocrinology* 2009;**150**:4521–4530.
58. Cnop M, Hannaert JC, Gruppung AY, Pipeleers DG. Low density lipoprotein can cause death of islet beta-cells by its cellular uptake and oxidative modification. *Endocrinology* 2002;**143**:3449–3453.
59. Oyadomari S, Araki E, Mori M. Endoplasmic reticulum stress-mediated apoptosis in pancreatic beta-cells. *Apoptosis* 2002;**7**:335–345.
60. Eizirik DL, Cardozo AK, Cnop M. The role for endoplasmic reticulum stress in diabetes mellitus. *Endocr Rev* 2008;**29**:42–61.
61. Volchuk A, Ron D. The endoplasmic reticulum stress response in the pancreatic beta-cell. *Diabetes Obes Metab* 2010;**12** (Suppl. 2):48–57.
62. Li XA, Titlow WB, Jackson BA, Giltiay N, Nikolova-Karakashian M, Uittenbogaard A, Smart EJ. High density lipoprotein binding to scavenger receptor, Class B, type I

- activates endothelial nitric-oxide synthase in a ceramide-dependent manner. *J Biol Chem* 2002;**277**:11058–11063.
63. Oeckinghaus A, Ghosh S. The NF- $\kappa$ B family of transcription factors and its regulation. *Cold Spring Harb Perspect Biol* 2009;**1**:a000034.
  64. Brazil DP, Yang ZZ, Hemmings BA. Advances in protein kinase B signalling: AKTion on multiple fronts. *Trends Biochem Sci* 2004;**29**:233–242.
  65. Kucharczak J, Simmons MJ, Fan Y, Gelinac C. To be, or not to be: NF- $\kappa$ B is the answer—role of Rel/NF- $\kappa$ B in the regulation of apoptosis. *Oncogene* 2003;**22**:8961–8982.
  66. Cnop M, Welsh N, Jonas JC, Jorns A, Lenzen S, Eizirik DL. Mechanisms of pancreatic  $\beta$ -cell death in type 1 and type 2 diabetes: many differences, few similarities. *Diabetes* 2005;**54** Suppl 2:S97–S107.
  67. Donath MY, Ehses JA, Maedler K, Schumann DM, Ellingsgaard H, Eppler E, Reinecke M. Mechanisms of  $\beta$ -cell death in type 2 diabetes. *Diabetes* 2005;**54** Suppl 2:S108–S113.
  68. Donath MY, Storling J, Berchtold LA, Billestrup N, Mandrup-Poulsen T. Cytokines and beta-cell biology: from concept to clinical translation. *Endocr Rev* 2008;**29**:334–350.
  69. Ortis F, Pirot P, Naamane N, Kreins AY, Rasschaert J, Moore F, Theatre E, Verhaeghe C, Magnusson NE, Chariot A, Orntoft TF, Eizirik DL. Induction of nuclear factor  $\kappa$ B and its downstream genes by TNF $\alpha$  and IL-1 $\beta$  has a pro-apoptotic role in pancreatic beta cells. *Diabetologia* 2008;**51**:1213–1225.
  70. Bulat N, Jaccard E, Peltzer N, Khalil H, Yang J-Y, Dubuis G, Widmann C. RasGAP-derived fragment N increases the resistance of beta cells towards apoptosis in NOD mice and delays the progression from mild to overt diabetes. *PLoS ONE* 2011;**6**:e22609.
  71. Hammar EB, Irminger JC, Rickenbach K, Parnaud G, Ribaux P, Bosco D, Rouiller DG, Halban PA. Activation of NF- $\kappa$ B by extracellular matrix is involved in spreading and glucose-stimulated insulin secretion of pancreatic beta cells. *J Biol Chem* 2005;**280**:30630–30637.
  72. Norata GD, Callegari E, Inoue H, Catapano AL. HDL3 induces cyclooxygenase-2 expression and prostacyclin release in human endothelial cells via a p38 MAPK/CRE-dependent pathway: effects on COX-2/PGI-synthase coupling. *Arterioscler Thromb Vasc Biol* 2004;**24**:871–877.
  73. Hers I, Vincent EE, Tavare JM. Akt signalling in health and disease. *Cell Signal* 2011;**23**:1515–1527.
  74. Khalil H, Bertrand MJ, Vandenabeele P, Widmann C. Caspase-3 and RasGAP: a stress-sensing survival/demise switch. *Trends Cell Biol* 2013;**24**:83–89.
  75. Yang J-Y, Widmann C. The RasGAP N-terminal fragment generated by caspase cleavage protects cells in a Ras/PI3K/Akt-dependent manner that does not rely on NF $\kappa$ B activation. *J Biol Chem* 2002;**277**:14641–14646.
  76. Yang J-Y, Walicki J, Abderrahmani A, Cornu M, Waeber G, Thorens B, Widmann C. Expression of an uncleavable N-terminal RasGAP fragment in insulin-secreting cells increases their resistance toward apoptotic stimuli without affecting their glucose-induced insulin secretion. *J Biol Chem* 2005;**280**:32835–32842.
  77. Yang J-Y, Walicki J, Jaccard E, Dubuis G, Bulat N, Hornung JP, Thorens B, Widmann C. Expression of the NH<sub>2</sub>-terminal fragment of RasGAP in pancreatic  $\beta$ -cells increases their resistance to stresses and protects mice from diabetes. *Diabetes* 2009;**58**:2596–2606.
  78. Daval M, Gurlo T, Costes S, Huang CJ, Butler PC. Cyclin-dependent kinase 5 promotes pancreatic beta-cell survival via Fak-Akt signaling pathways. *Diabetes* 2011;**60**:1186–1197.
  79. Wang X, Liu Y, Yang Z, Zhang Z, Zhou W, Ye Z, Zhang W, Zhang S, Yang Z, Feng X, Chen F, Hu R. Glucose metabolism-related protein 1 (GMRP1) regulates pancreatic beta cell proliferation and apoptosis via activation of Akt signalling pathway in rats and mice. *Diabetologia* 2011;**54**:852–863.
  80. Shuai H, Zhang J, Zhang J, Xie J, Zhang M, Yu Y, Zhang L. Erythropoietin protects pancreatic beta-cell line NIT-1 cells against cytokine-induced apoptosis via phosphatidylinositol 3-kinase/Akt signaling. *Endocr Res* 2011;**36**:25–34.
  81. Wijesekara N, Krishnamurthy M, Bhattacharjee A, Suhail A, Sweeney G, Wheeler MB. Adiponectin-induced ERK and Akt phosphorylation protects against pancreatic beta cell apoptosis and increases insulin gene expression and secretion. *J Biol Chem* 2010;**285**:33623–33631.
  82. Widenmaier SB, Ao Z, Kim SJ, Warnock G, McIntosh CH. Suppression of p38 MAPK and JNK via Akt-mediated inhibition of apoptosis signal-regulating kinase 1 constitutes a core component of the  $\beta$ -cell pro-survival effects of glucose-dependent insulinotropic polypeptide. *J Biol Chem* 2009;**284**:30372–30382.
  83. Yano T, Liu Z, Donovan J, Thomas MK, Habener JF. Stromal cell derived factor-1 (SDF-1)/CXCL12 attenuates diabetes in mice and promotes pancreatic beta-cell survival by activation of the pro-survival kinase Akt. *Diabetes* 2007;**56**:2946–2957.
  84. Wentz W, Efanov AM, Brenner M, Kharitonov A, Koster A, Sandusky GE, Sewing S, Treinies I, Zitzer H, Gromada J. Fibroblast growth factor-21 improves pancreatic beta-cell function and survival by activation of extracellular signal-regulated kinase 1/2 and Akt signaling pathways. *Diabetes* 2006;**55**:2470–2478.
  85. Srinivasan S, Bernal-Mizrachi E, Ohnogi M, Permutt MA. Glucose promotes pancreatic islet  $\beta$ -cell survival through a PI 3-kinase/Akt-signaling pathway. *Am J Physiol Endocrinol Metab* 2002;**283**:E784–E793.
  86. Higa M, Shimabukuro M, Shimajiri Y, Takasu N, Shinjo T, Inaba T. Protein kinase B/Akt signalling is required for palmitate-induced beta-cell lipotoxicity. *Diabetes Obes Metab* 2006;**8**:228–233.
  87. Mineo C, Yuhanna IS, Quon MJ, Shaul PW. High density lipoprotein-induced endothelial nitric-oxide synthase activation is mediated by Akt and MAP kinases. *J Biol Chem* 2003;**278**:9142–9149.
  88. Rentero C, Evans R, Wood P, Tebar F, Vila dM, Cubells L, de DI, Hayes TE, Hughes WE, Pol A, Rye KA, Enrich C, Grewal T. Inhibition of H-Ras and MAPK is compensated by PKC-dependent pathways in annexin A6 expressing cells. *Cell Signal* 2006;**18**:1006–1016.
  89. Zhang Q, Yin H, Liu P, Zhang H, She M. Essential role of HDL on endothelial progenitor cell proliferation with PI3K/Akt/cyclin D1 as the signal pathway. *Exp Biol Med (Maywood)* 2010;**235**:1082–1092.
  90. Schmidt A, Geigenmuller S, Volker W, Buddecke E. The antiatherogenic and antiinflammatory effect of HDL-associated lysosphingolipids operates via Akt  $\rightarrow$  NF- $\kappa$ B signalling pathways in human vascular endothelial cells. *Basic Res Cardiol* 2006;**101**:109–116.
  91. Nofer JR, Levkau B, Wolinska I, Junker R, Fobker M, von Eckardstein A, Seedorf U, Assmann G. Suppression of endothelial cell apoptosis by high density lipoproteins (HDL) and HDL-associated lysosphingolipids. *J Biol Chem* 2001;**276**:34480–34485.
  92. Dupraz P, Rinsch C, Pralong WF, Rolland E, Zufferey R, Trono D, Thorens B. Lentivirus-mediated Bcl-2 expression in betaTC-tet cells improves resistance to hypoxia and cytokine-induced apoptosis while preserving in vitro and in vivo control of insulin secretion. *Gene Ther* 1999;**6**:1160–1169.
  93. Karlens AE, Heding PE, Frobose H, Ronn SG, Kruhoffer M, Orntoft TF, Darville M, Eizirik DL, Pociof F, Nerup J, Mandrup-Poulsen T, Billestrup N. Suppressor of cytokine signalling (SOCS)-3 protects beta cells against IL-1 $\beta$ -mediated toxicity through inhibition of multiple nuclear factor- $\kappa$ B-regulated proapoptotic pathways. *Diabetologia* 2004;**47**:1998–2011.
  94. Hetz C. The unfolded protein response: controlling cell fate decisions under ER stress and beyond. *Nat Rev Mol Cell Biol* 2012;**13**:89–102.
  95. Jager R, Bertrand MJ, Gorman AM, Vandenabeele P, Samali A. The unfolded protein response at the crossroads of cellular life and death during endoplasmic reticulum stress. *Biol Cell* 2012;**104**:259–270.
  96. Sambrook JF. The involvement of calcium in transport of secretory proteins from the endoplasmic reticulum. *Cell* 1990;**61**:197–199.
  97. Kharroubi I, Ladriere L, Cardozo AK, Dogusan Z, Cnop M, Eizirik DL. Free fatty acids and cytokines induce pancreatic beta-cell apoptosis by different mechanisms: role of nuclear factor- $\kappa$ B and endoplasmic reticulum stress. *Endocrinology* 2004;**145**:5087–5096.
  98. Cardozo AK, Ortis F, Storling J, Feng YM, Rasschaert J, Tonnesen M, Van EF, Mandrup-Poulsen T, Herchuelz A, Eizirik DL. Cytokines downregulate the sarcoendoplasmic reticulum pump Ca<sup>2+</sup> ATPase 2b and deplete endoplasmic reticulum Ca<sup>2+</sup>, leading to induction of endoplasmic reticulum stress in pancreatic  $\beta$ -cells. *Diabetes* 2005;**54**:452–461.
  99. Luciani DS, Gwiazda KS, Yang TL, Kalyniak TB, Bychkivskaya Y, Frey MH, Jeffrey KD, Sampaio AV, Underhill TM, Johnson JD. Roles of IP3R and RyR Ca<sup>2+</sup> channels in endoplasmic reticulum stress and beta-cell death. *Diabetes* 2009;**58**:422–432.
  100. Tonnesen MF, Grunnet LG, Friberg J, Cardozo AK, Billestrup N, Eizirik DL, Storling J, Mandrup-Poulsen T. Inhibition of nuclear factor- $\kappa$ B or Bax prevents endoplasmic reticulum stress- but not nitric oxide-mediated apoptosis in INS-1E cells. *Endocrinology* 2009;**150**:4094–4103.
  101. Shao RG, Shimizu T, Pommier Y. Brefeldin A is a potent inducer of apoptosis in human cancer cells independently of p53. *Exp Cell Res* 1996;**227**:190–196.
  102. Wallen E, Sellers RG, Peehl DM. Brefeldin A induces p53-independent apoptosis in primary cultures of human prostatic cancer cells. *J Urol* 2000;**164**:836–841.
  103. Varadarajan S, Bampton ET, Smalley JL, Tanaka K, Caves RE, Butterworth M, Wei J, Pellecchia M, Mitcheson J, Gant TW, Dinsdale D, Cohen GM. A novel cellular stress response characterised by a rapid reorganisation of membranes of the endoplasmic reticulum. *Cell Death Differ* 2012;**19**:1896–1907.
  104. Moon JL, Kim SY, Shin SW, Park JW. Regulation of brefeldin A-induced ER stress and apoptosis by mitochondrial NADP<sup>+</sup>-dependent isocitrate dehydrogenase. *Biochem Biophys Res Commun* 2012;**417**:760–764.
  105. Lai E, Bikopoulos G, Wheeler MB, Rozakis-Adcock M, Volchuk A. Differential activation of ER stress and apoptosis in response to chronically elevated free fatty acids in pancreatic beta-cells. *Am J Physiol Endocrinol Metab* 2008;**294**:E540–E550.
  106. Drew BG, Duffy SJ, Formosa MF, Natoli AK, Henstridge DC, Penfold SA, Thomas WG, Mukhamedova N, de Court, Forbes JM, Yap FY, Kaye DM, van Hall G, Febbraio MA, Kemp BE, Sviridov D, Steinberg GR, Kingwell BA. High-density lipoprotein modulates glucose metabolism in patients with type 2 diabetes mellitus. *Circulation* 2009;**119**:2103–2111.
  107. Siebel AL, Natoli AK, Yap FY, Carey AL, Reddy-Luthmoodoo M, Sviridov D, Weber CI, Meneses-Lorente G, Maugeais C, Forbes JM, Kingwell BA. Effects of high-density lipoprotein elevation with cholesteryl ester transfer protein inhibition on insulin secretion. *Circ Res* 2013;**113**:167–175.
  108. Barter PJ, Rye KA, Tardif JC, Waters DD, Boekholdt SM, Breazna A, Kastelein JJ. Effect of torcetrapib on glucose, insulin, and hemoglobin A1c in subjects in the Investigation of Lipid Level Management to Understand its Impact in Atherosclerotic Events (ILLUMINATE) trial. *Circulation* 2011;**124**:555–562.
  109. Tang C, Oram JF. The cell cholesterol exporter ABCA1 as a protector from cardiovascular disease and diabetes. *Biochim Biophys Acta* 2009;**1791**:563–572.

110. Kusunohara H, Sugiyama Y. ATP-binding cassette, subfamily G (ABCG family). *Pflugers Arch* 2007;**453**:735–744.
111. Brunham LR, Kruit JK, Pape TD, Timmins JM, Reuwer AQ, Vasanthi Z, Marsh BJ, Rodrigues B, Johnson JD, Parks JS, Verchere CB, Hayden MR.  $\beta$ -cell ABCA1 influences insulin secretion, glucose homeostasis and response to thiazolidinedione treatment. *Nat Med* 2007;**13**:340–347.
112. Kruit JK, Wijesekara N, Fox JE, Dai XQ, Brunham LR, Searle GJ, Morgan GP, Costin AJ, Tang R, Bhattacharjee A, Johnson JD, Light PE, Marsh BJ, Macdonald PE, Verchere CB, Hayden MR. Islet cholesterol accumulation due to loss of ABCA1 leads to impaired exocytosis of insulin granules. *Diabetes* 2011;**60**:3186–3196.
113. Kang MH, Zhang LH, Wijesekara N, de HW, Butland S, Bhattacharjee A, Hayden MR. Regulation of ABCA1 protein expression and function in hepatic and pancreatic islet cells by miR-145. *Arterioscler Thromb Vasc Biol* 2013;**33**:2724–2732.
114. Wijesekara N, Zhang LH, Kang MH, Abraham T, Bhattacharjee A, Warnock GL, Verchere CB, Hayden MR. miR-33a modulates ABCA1 expression, cholesterol accumulation, and insulin secretion in pancreatic islets. *Diabetes* 2012;**61**:653–658.
115. Sturek JM, Castle JD, Trace AP, Page LC, Castle AM, Evans-Molina C, Parks JS, Mirmira RG, Hedrick CC. An intracellular role for ABCG1-mediated cholesterol transport in the regulated secretory pathway of mouse pancreatic beta cells. *J Clin Invest* 2010;**120**:2575–2589.
116. Kruit JK, Wijesekara N, Westwell-Roper C, Vanmierlo T, de Haan W, Bhattacharjee A, Tang R, Wellington CL, Lutjohann D, Johnson JD, Brunham LR, Verchere CB, Hayden MR. Loss of both ABCA1 and ABCG1 results in increased disturbances in islet sterol homeostasis, inflammation, and impaired beta-cell function. *Diabetes* 2012;**61**:659–664.
117. Koseki M, Matsuyama A, Nakatani K, Inagaki M, Nakaoka H, Kawase R, Yuasa-Kawase M, Tsubakio-Yamamoto K, Masuda D, Sandoval JC, Ohama T, Nakagawa-Toyama Y, Matsuura F, Nishida M, Ishigami M, Hirano K, Sakane N, Kumon Y, Suehiro T, Nakamura T, Shimomura I, Yamashita S. Impaired insulin secretion in four Tangier disease patients with ABCA1 mutations. *J Atheroscler Thromb* 2009;**16**:292–296.
118. Vergeer M, Brunham LR, Koetsveld J, Kruit JK, Verchere CB, Kastelein JJ, Hayden MR, Stroes ES. Carriers of loss-of-function mutations in ABCA1 display pancreatic beta-cell dysfunction. *Diabetes Care* 2010;**33**:869–874.
119. Schou J, Tybjaerg-Hansen A, Moller HJ, Nordestgaard BG, Frikke-Schmidt R. ABC transporter genes and risk of type 2 diabetes: a study of 40,000 individuals from the general population. *Diabetes Care* 2012;**35**:2600–2606.
120. Braut M, Ray J, Gomez YH, Mantzoros CS, Daskalopoulou SS. Statin treatment and new-onset diabetes: A review of proposed mechanisms. *Metabolism* 2014;**63**:735–745.