

Images in cardio-thoracic surgery

Anatomic repair of a left main coronary artery aneurysm

Friedrich S. Eckstein^{a,*}, Stephan Windecker^b, Thierry P. Carrel^a

^a Clinic for Cardiovascular Surgery, University Hospital Berne, Switzerland

^b Clinic for Cardiology, University Hospital Berne, Switzerland

Received 7 May 2007; received in revised form 31 May 2007; accepted 14 June 2007; Available online 15 August 2007

Keywords: Coronary; Aneurysm; Reconstruction

A 45-year-old male presented with acute anterior infarction. Coronary angiography revealed a 20 mm × 30 mm left main coronary artery (LMCA) aneurysm (Fig. 1). After separation of the pulmonary artery, anatomic recon-

struction of the LMCA using a Y-bifurcated vein graft segment was performed (Fig. 2). The LAD was additionally grafted with the left ITA.

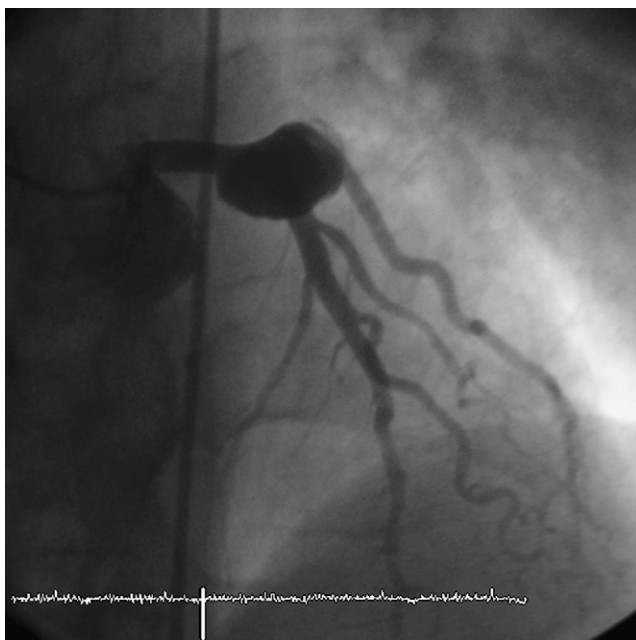


Fig. 1. Left main coronary artery with the LAD and the CX arteries originating from the huge aneurysm.

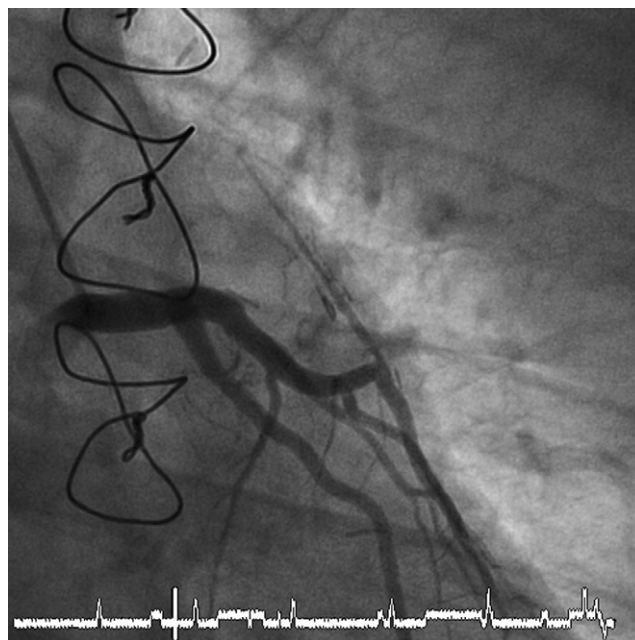


Fig. 2. Postoperative image after 6 months with reconstructed left main stem and still patent LITA to LAD.

* Corresponding author. Address: Clinic for Cardiovascular Surgery, University Hospital Berne, Freiburgstrasse, CH-3010 Berne, Switzerland.
Tel.: +41 31 6322111; fax: +41 31 6322919.
E-mail address: friedrich.Eckstein@insel.ch (F.S. Eckstein).