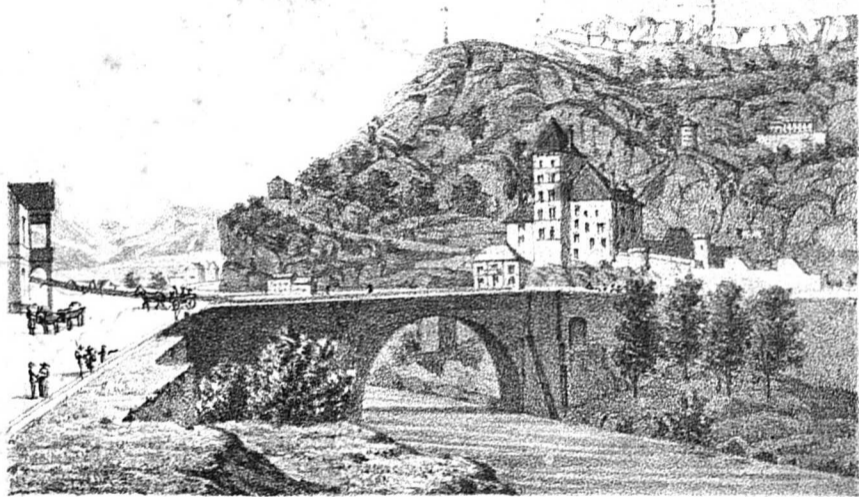


SOUVENIRS  
DE LA  
GROTTE AUX FÉES  
ST MAURICE  
VALAIS



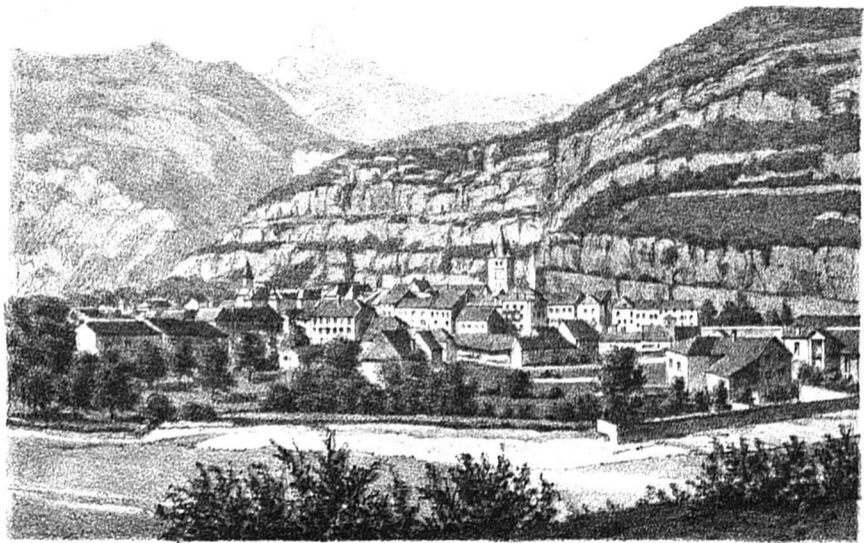
Rh 476

7001/20



VUE DU CHATEAU





— VUE DE ST. MAURICE —

2

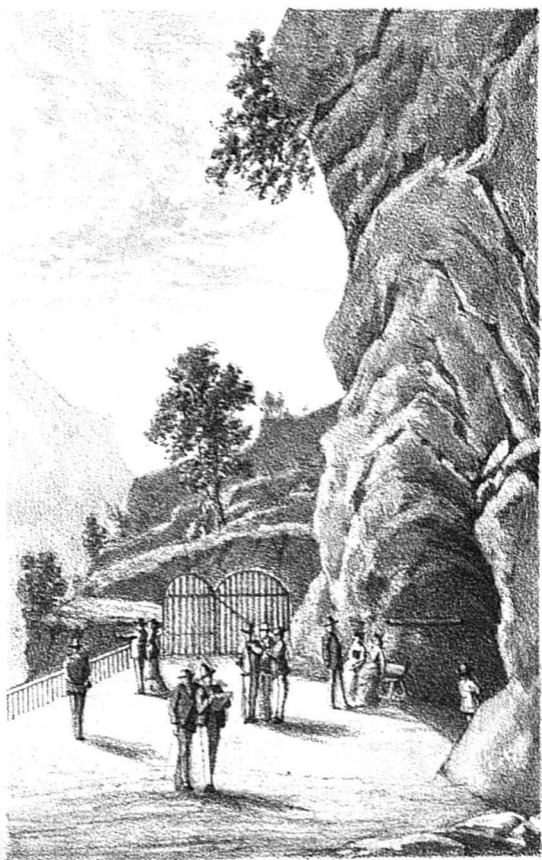




VUE DE L'ABBAYE

Liure de du mage

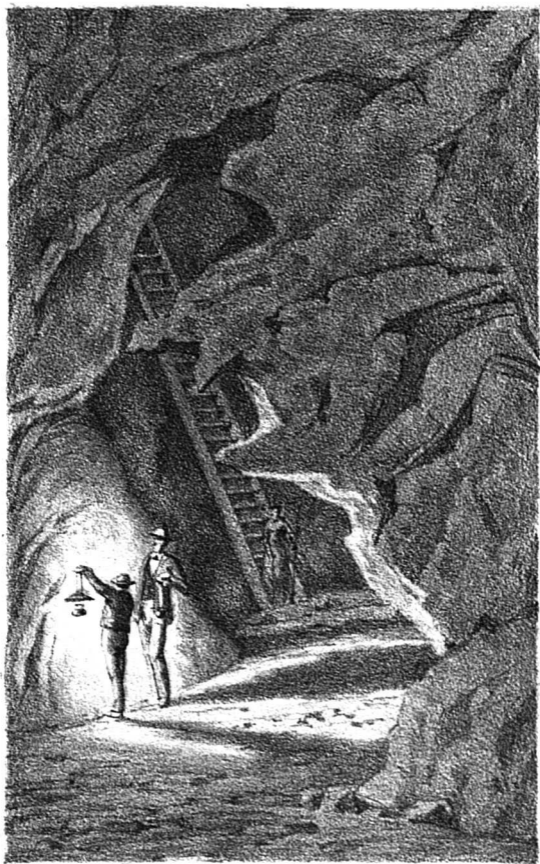
Three wavy horizontal lines drawn in black ink, positioned below the text. The lines are irregular and wavy, resembling a decorative flourish or a series of connected curves.



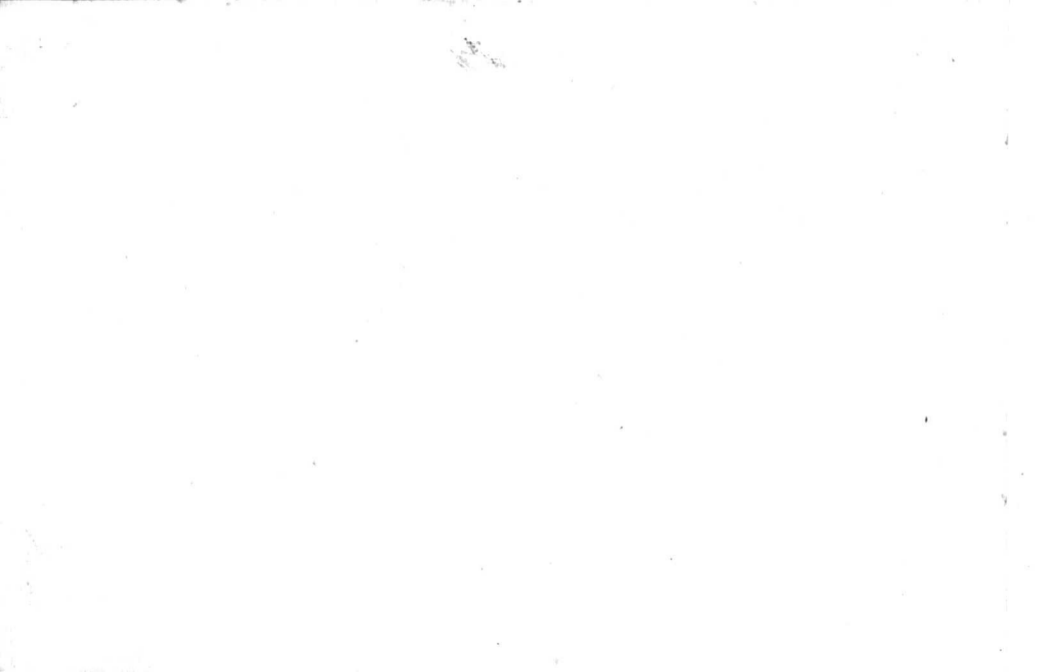
ENTRÉE DE LA GROTTÉ

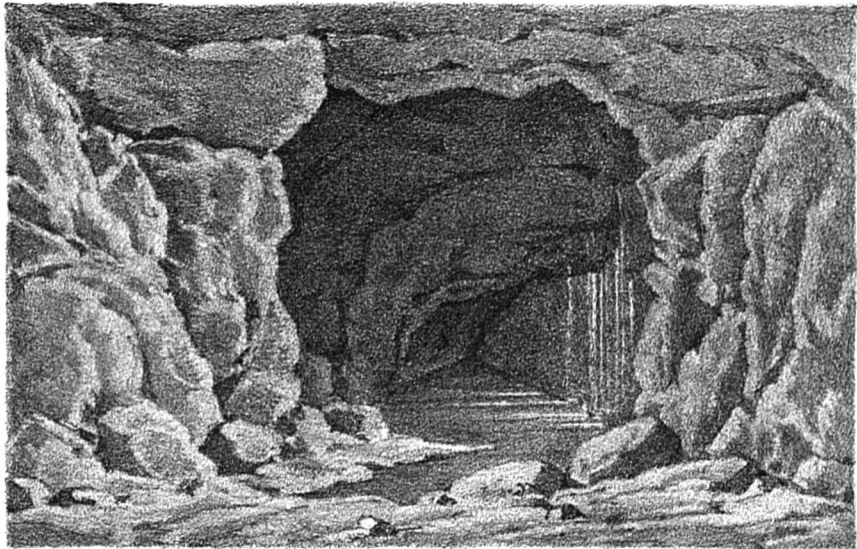
Livre de voyage

no. 1

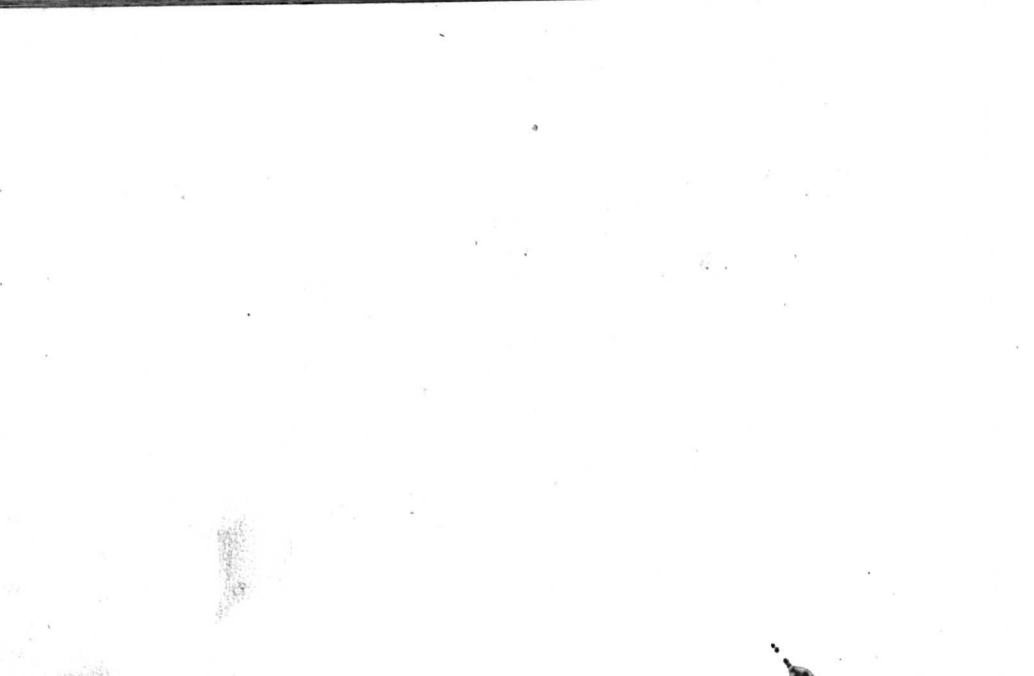


L'ÉCHELLE

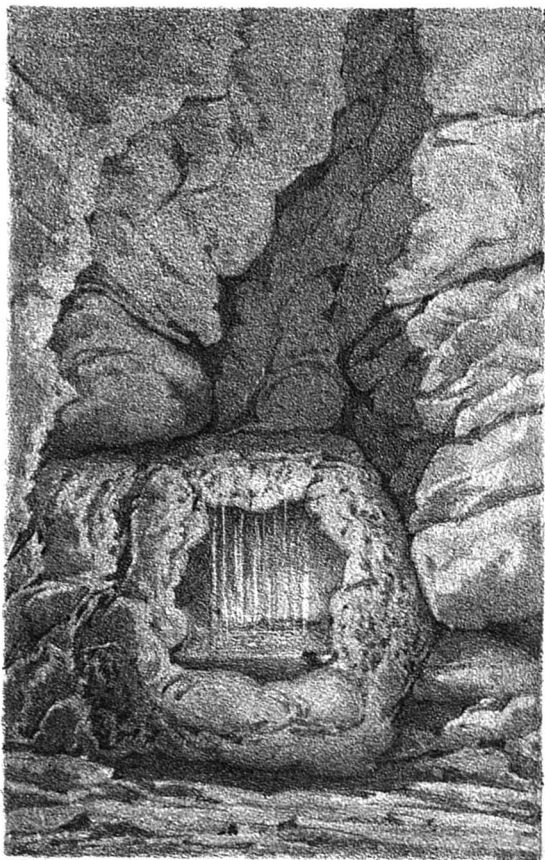




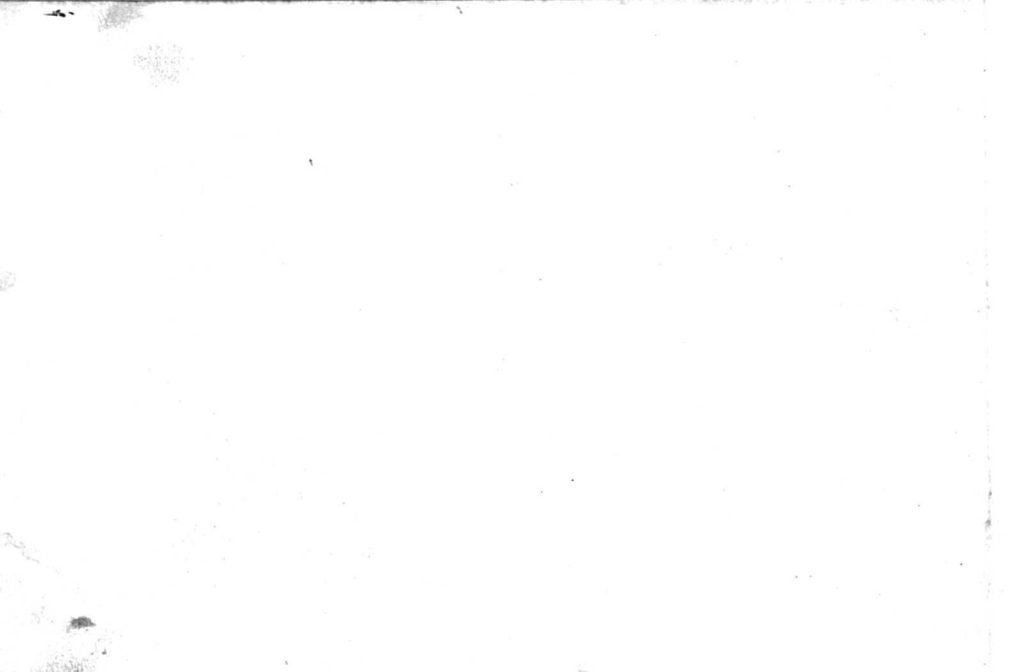
— FONTAINE DE MOÏSE —

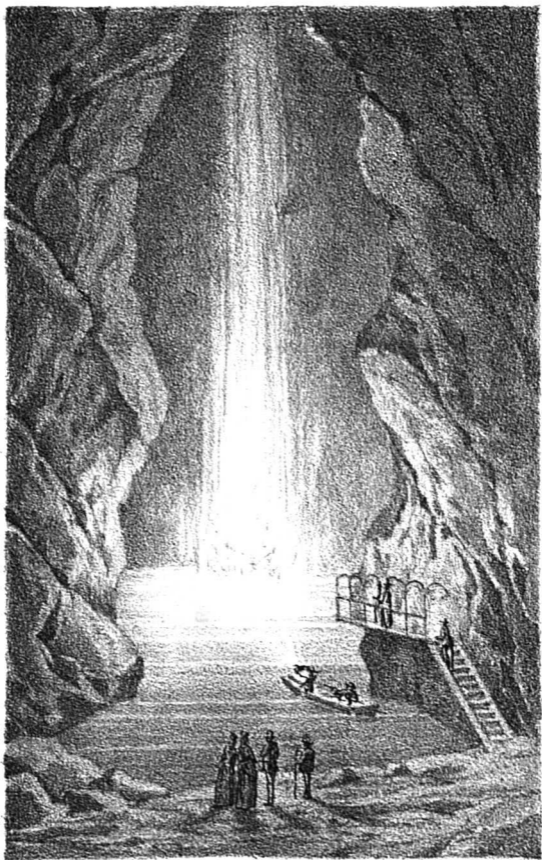




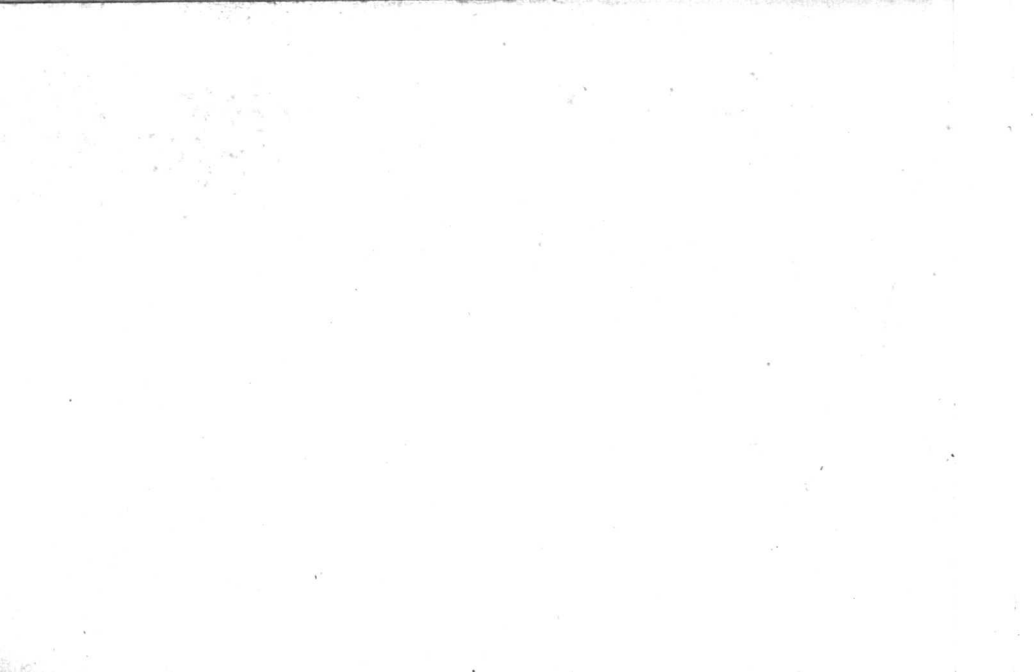


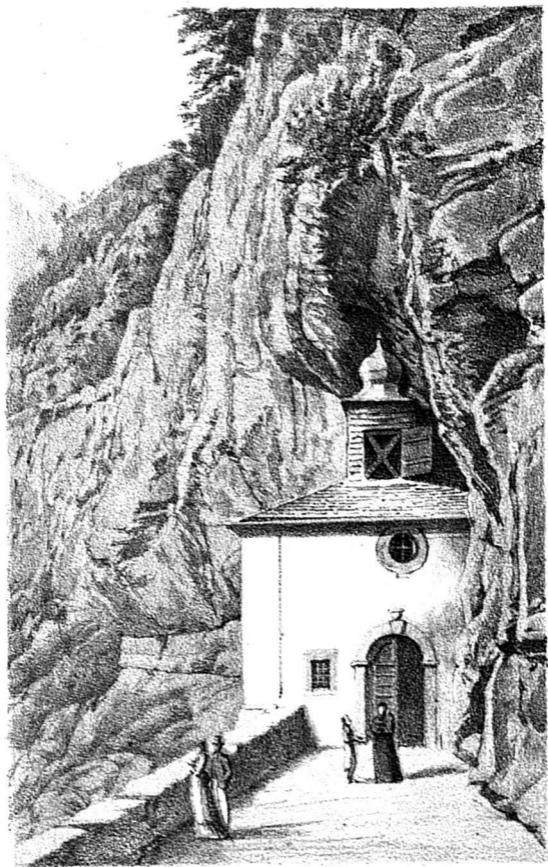
— FONTAINE DES FÉES —



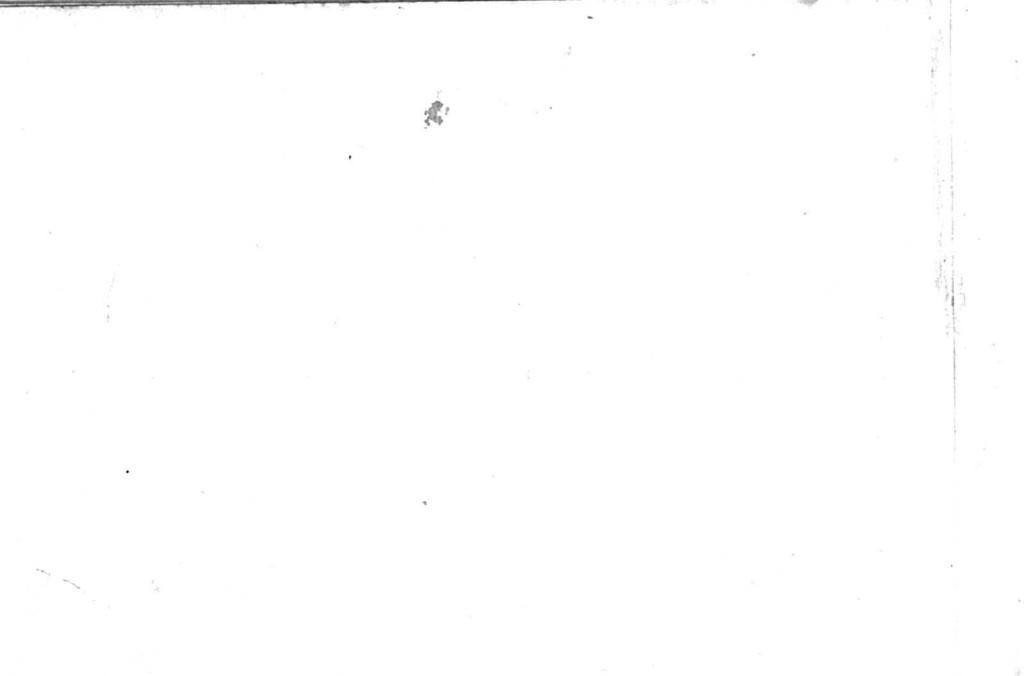


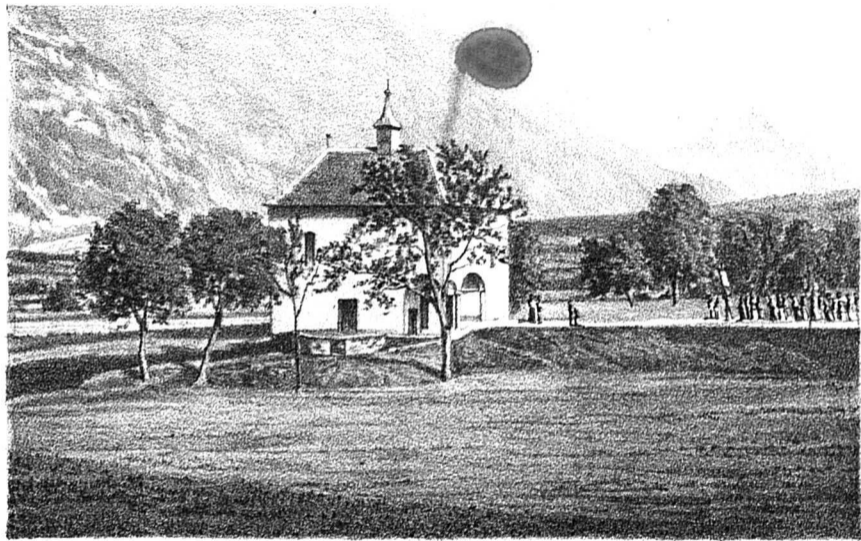
CASCADE





— CHAPELLE DE SEX —

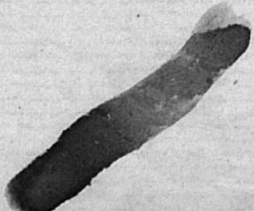
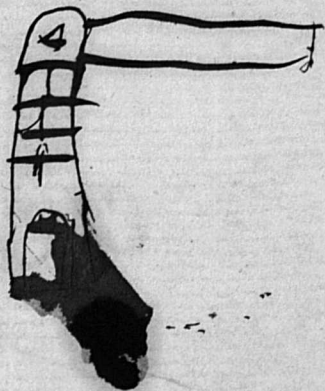




— CHAMP DES MARTYRS —







ca

ca

ca







