

Figure 1. Character 1(0): CAS 228437, *texana*, anterior view.



Figure 2. Character 1(1): CAS 228404, *belliana*, anterior view.

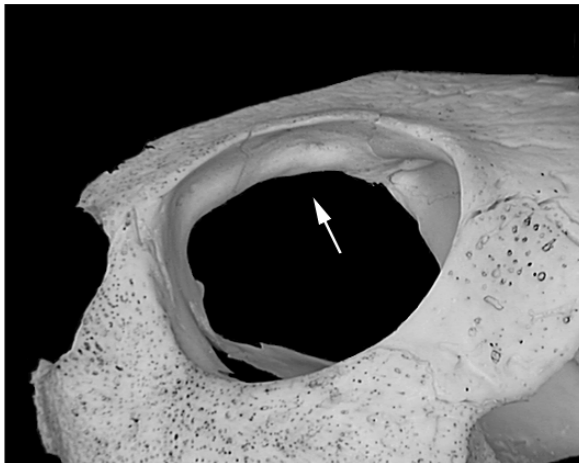


Figure 3. Character 2(0): CAS 228458, *texana*, left lateral view.

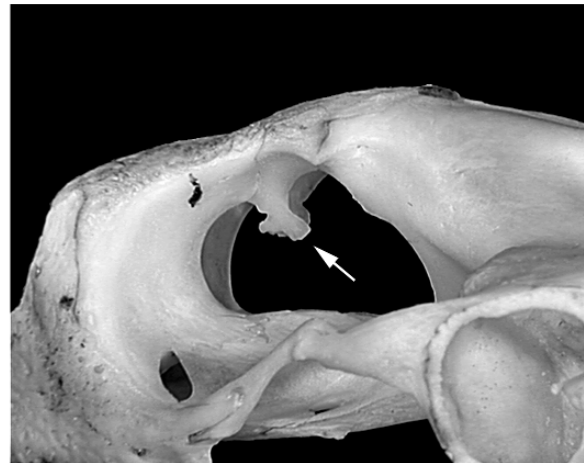


Figure 4. Character 2(1): CAS 228404, *belliana*, left lateral view.

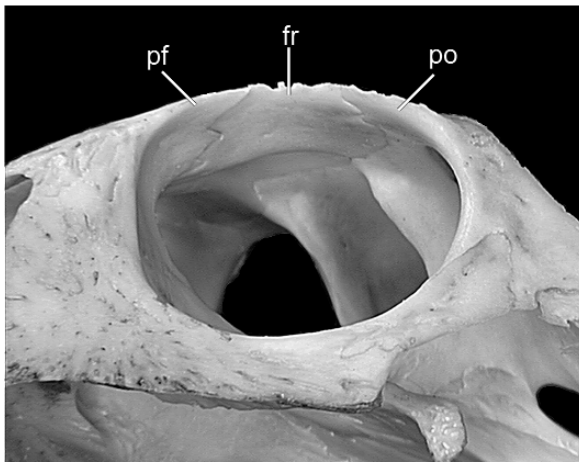


Figure 5. Character 3(0): CAS 228444, *mouhotii*, left ventrolateral view of orbit.

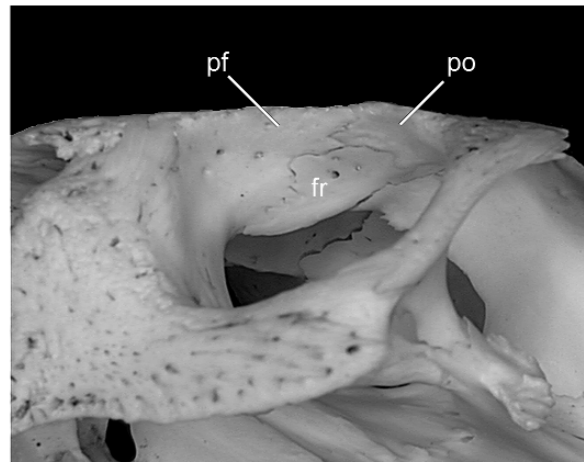


Figure 6. Character 3(1): CAS 228443, *grandis*, left ventrolateral view of orbit.

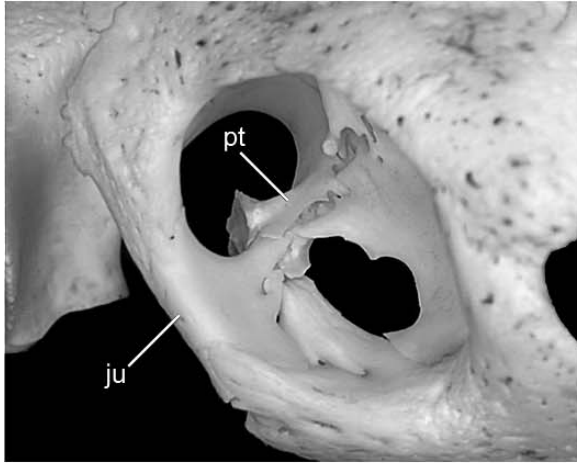


Figure 7. Character 4(0): CAS 228443, *grandis*, right anterolateral view of orbit.

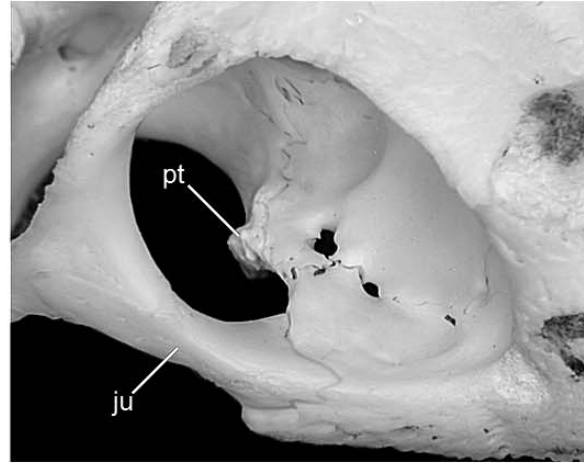


Figure 8. Character 4(1): CAS 228420, *mouhotii*, right anterolateral view of orbit.

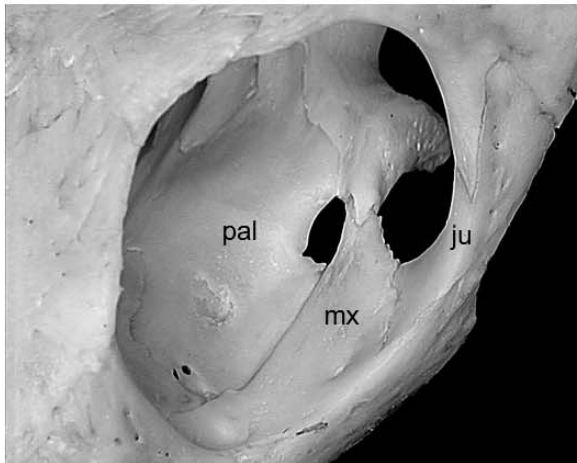


Figure 9. Character 5(0): CAS 228444, *mouhotii*, left anterolateral view of orbit.

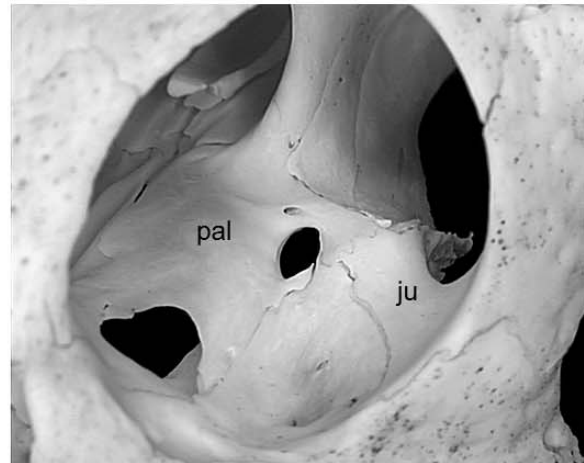


Figure 10. Character 5(1): CAS 228438, *texana*, left anterolateral view of orbit.

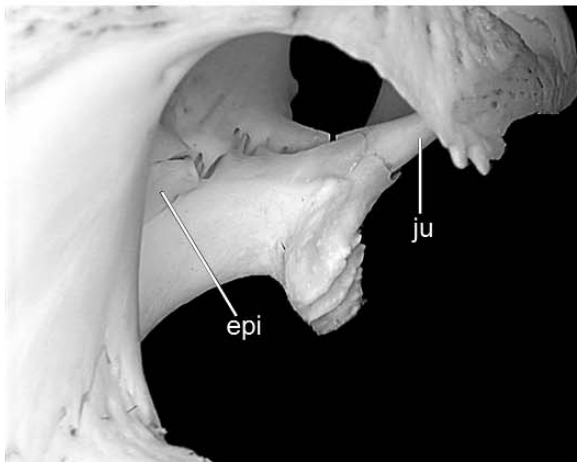


Figure 11. Character 6(0): CAS 228443, *grandis*, right posterolateral view.

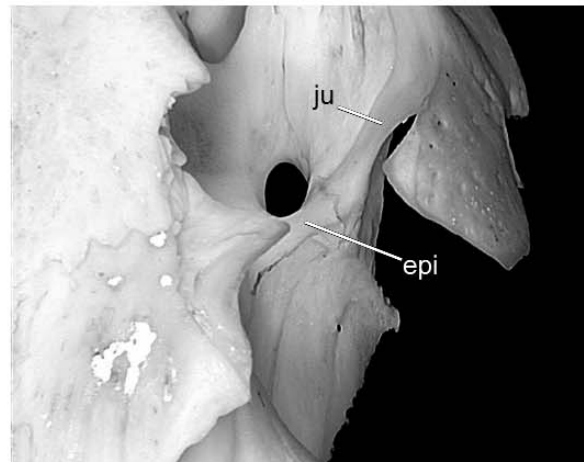


Figure 12. Character 6(1): CAS 228439, *texana*, right posterolateral view, postorbital removed.

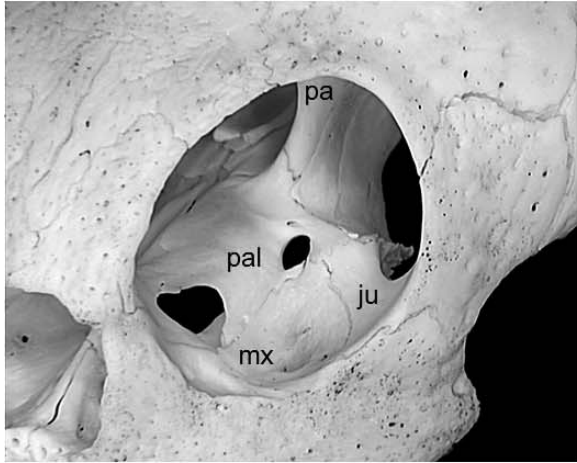


Figure 13. Character 7(0) and 8(0): CAS 228438, *texana*, left anterolateral view of orbit.

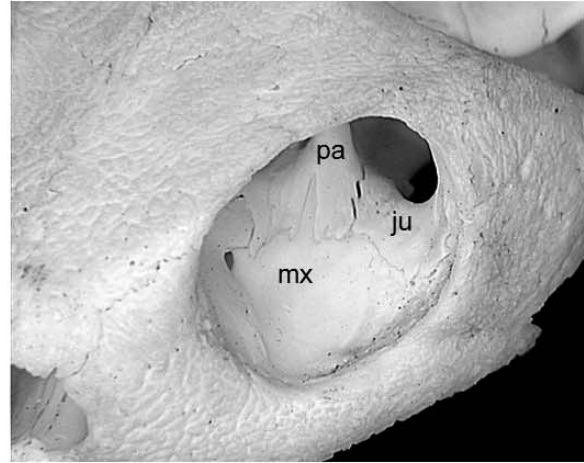


Figure 14. Character 7(1) and 8(1): CAS 228445, *subtrijuga*, left anterolateral view of orbit.

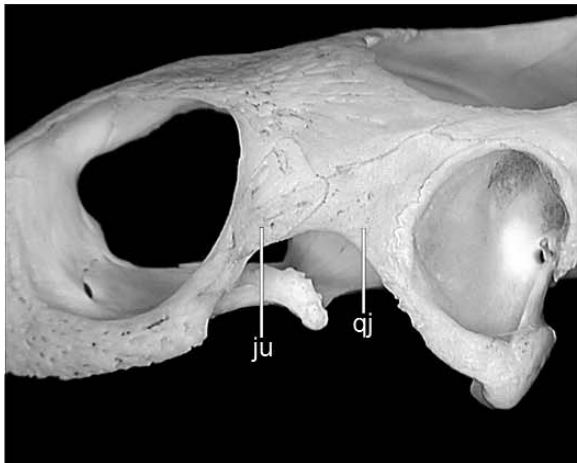


Figure 15. Character 9(0): CAS 228447, *orbicularis*, left lateral view.

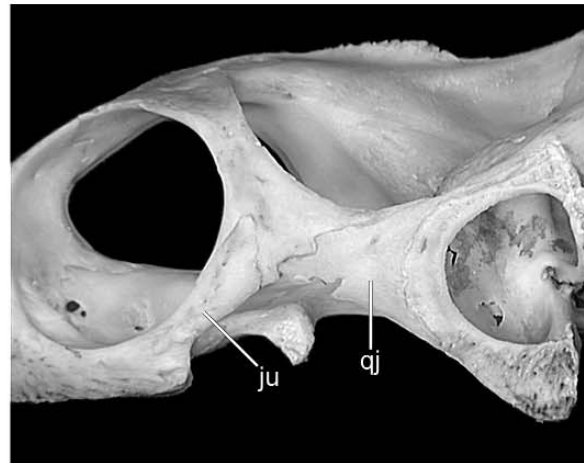


Figure 16. Character 9(1): CAS 228444, *mouhotii*, left lateral view.

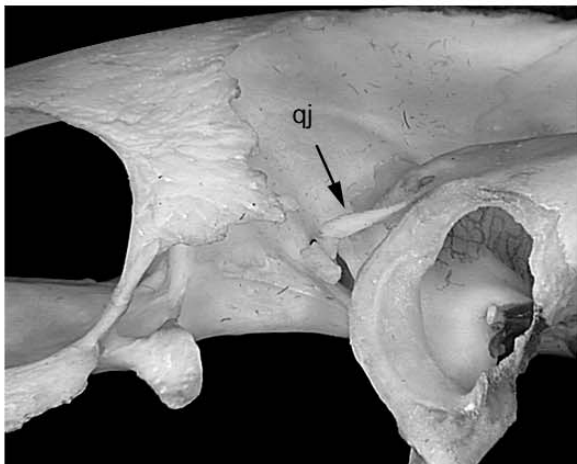


Figure 17. Character 9(2): YPM 14074, *galbinifrons*, left lateral view.



Figure 18. Character 9(2): YPM 14080, *galbinifrons*, left lateral view.



Figure 19. Character 10(0): CAS 228444, *mouhotii*, left lateral view.

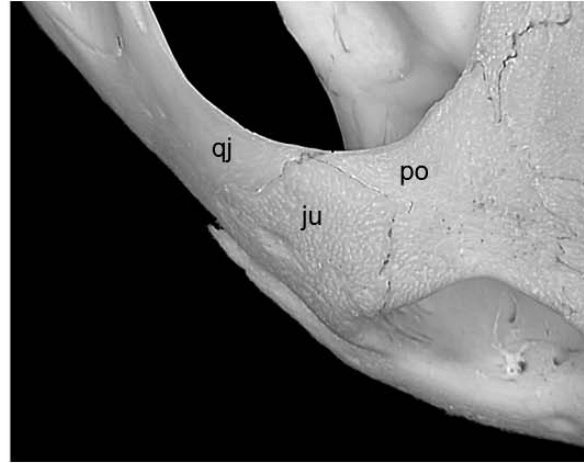


Figure 20. Character 10(0): CAS 228446, *subtrijuga*, left lateral view.

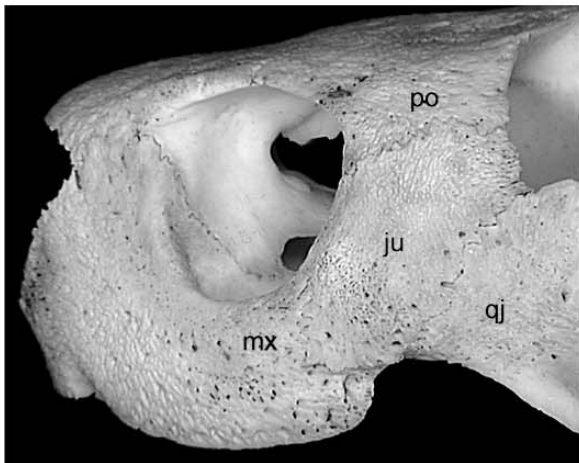


Figure 21. Character 10(1): YPM 10339, *hamiltonii*, left lateral view of orbit.

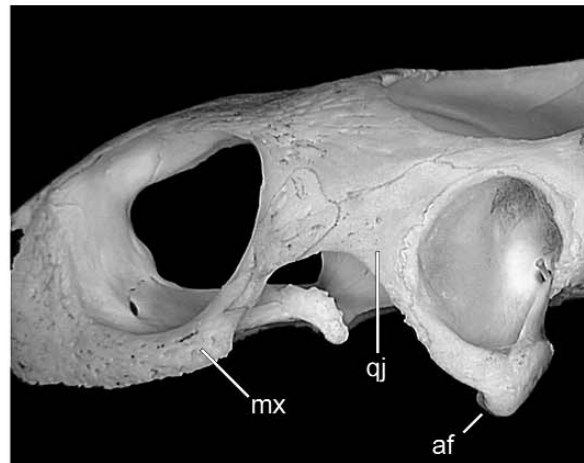


Figure 22. Character 11(0) and 12(0): CAS 228447, *orbicularis*, left lateral view.

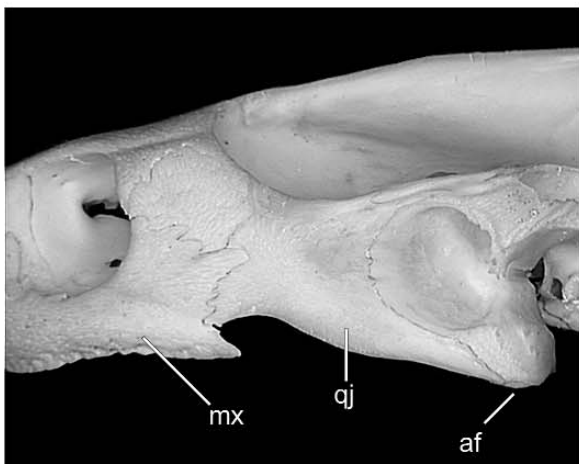


Figure 23. Character 11(1) and 12(1): CAS 228446, *subtrijuga*, left lateral view.

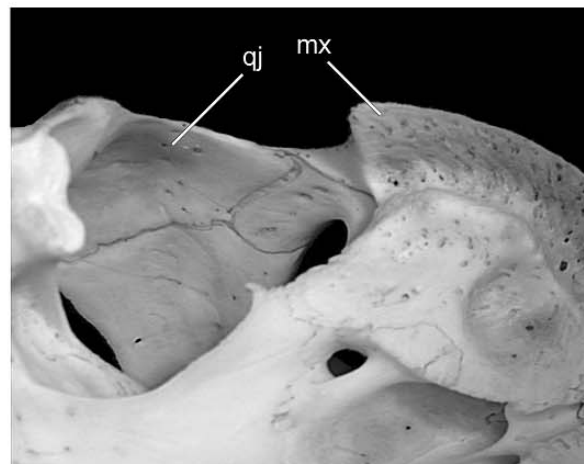


Figure 24. Character 12(1): CAS 228438, *texana*, right posteroventral view of lower temporal fossa.

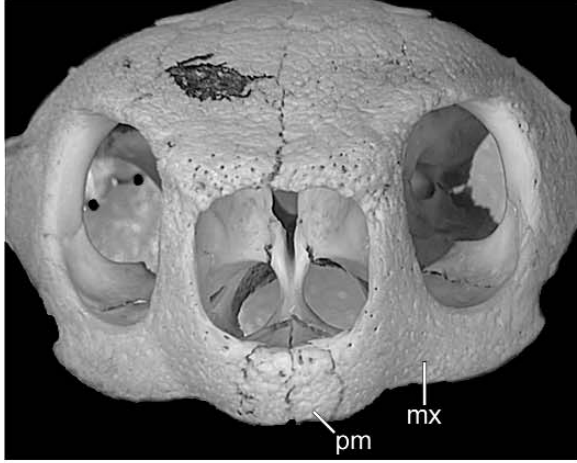


Figure 25. Character 13(0): CAS 228361, *reevesii*, anterior view.

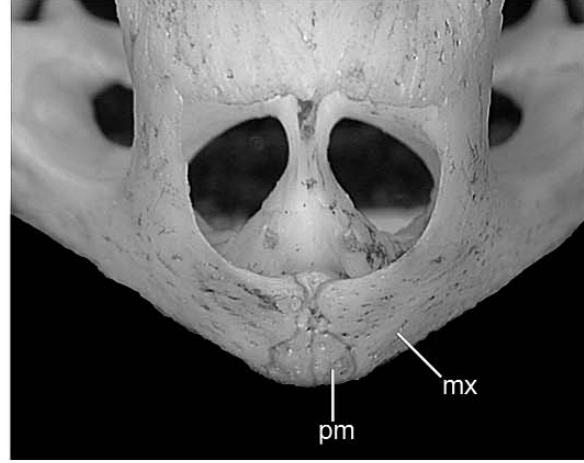


Figure 26. Character 13(0): CAS 228419, *amboinensis*, anterior view.

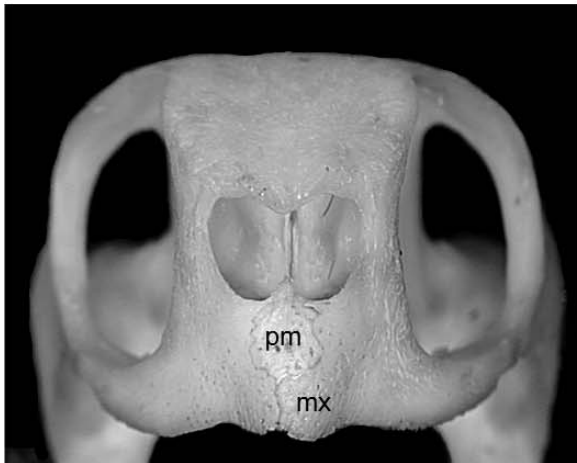


Figure 27. Character 13(1): CAS 228371, *spengleri*, anterior view.

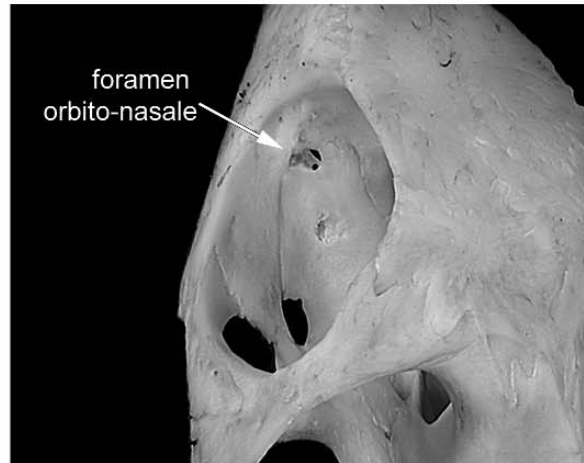


Figure 28. Character 14(0): CAS 228444, *mouhotii*, left posterolateral view of orbit.

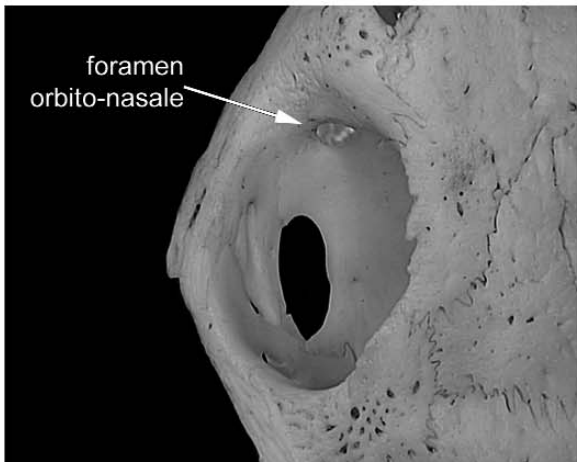


Figure 29. Character 14(0): CAS 228443, *grandis*, left posterolateral view of orbit.

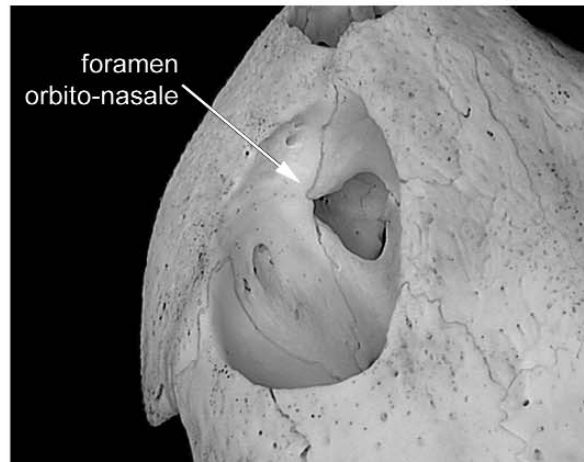


Figure 30. Character 14(1): CAS 228438, *texana*, left posterolateral view of orbit.

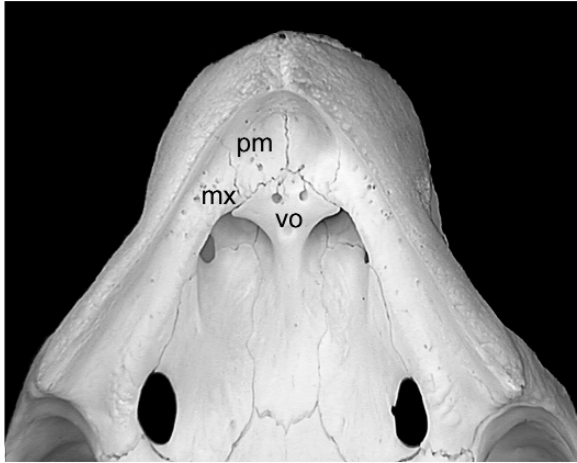


Figure 31. Character 15(0): CAS 228342, *N. platynota*, ventral view of palate.

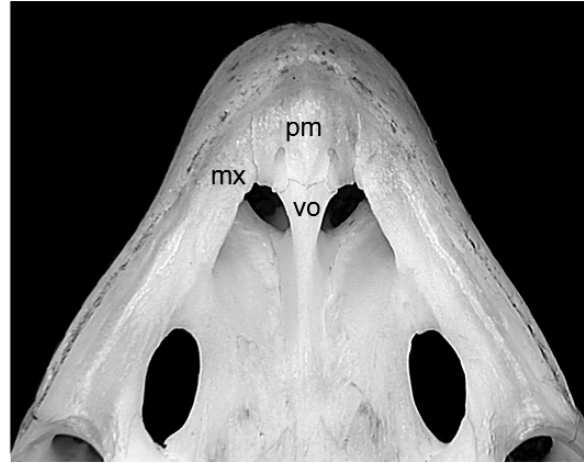


Figure 32. Character 15(1): CAS 228419, *N. amboinensis*, ventral view of palate.

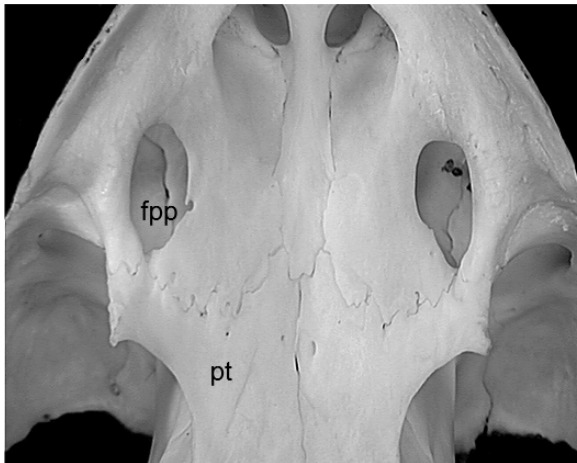


Figure 33. Character 16(0) and 17(0): CAS 228447, *N. orbicularis*, ventral view of palate.

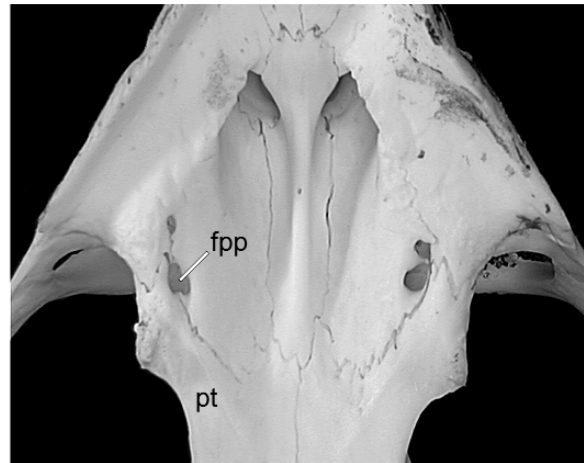


Figure 34. Character 16(1) and 17(1): CAS 228420, *N. mouhotii*, ventral view of palate.

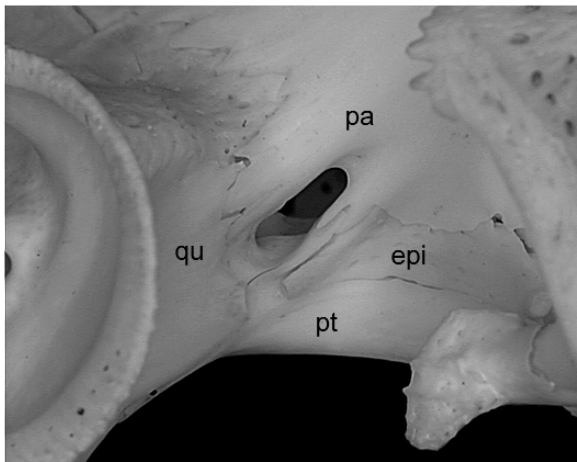


Figure 35. Character 18(0): CAS 228443, *N. grandis*, right lateral view of trigeminal foramen.

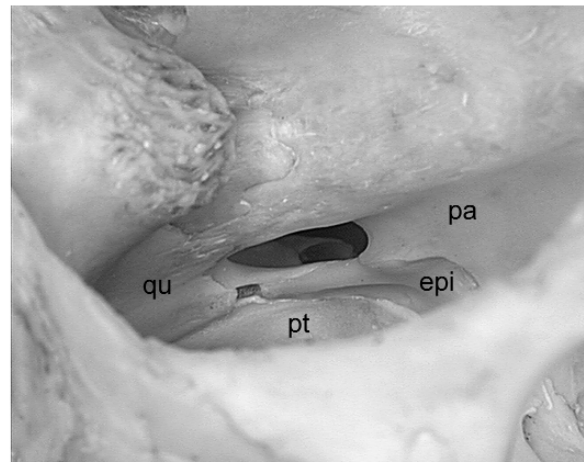


Figure 36. Character 18(1): CAS 228444, *N. mouhotii*, right dorsolateral view of trigeminal foramen.

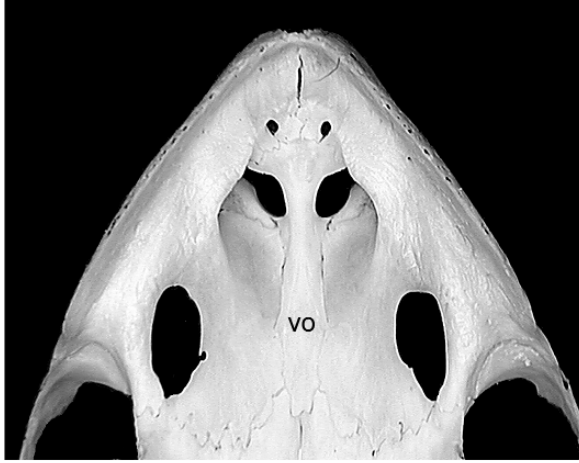


Figure 37. Character 19(0): CAS 228447, *orbicularis*, ventral view of palate.



Figure 38. Character 19(1): TMM 2813, *berlandieri*, ventral view of palate.



Figure 39. Character 20(0): CAS 228335, *crassicollis*, ventral view of palate.

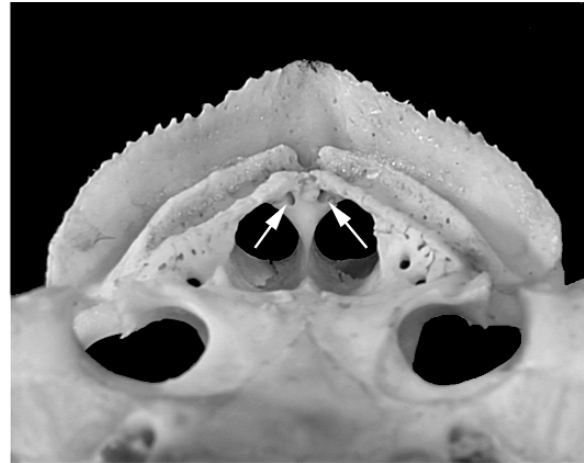


Figure 40. Character 20(1): FMNH 259430, *tentoria*, posteroventral view of palate.

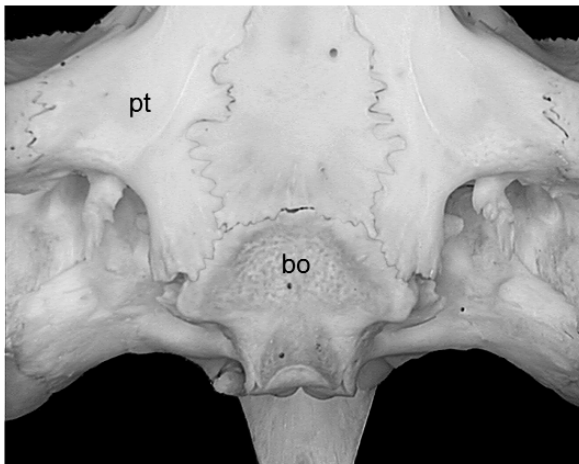


Figure 41. Character 21(0): CAS 228443, *grandis*, ventral view of brain case.

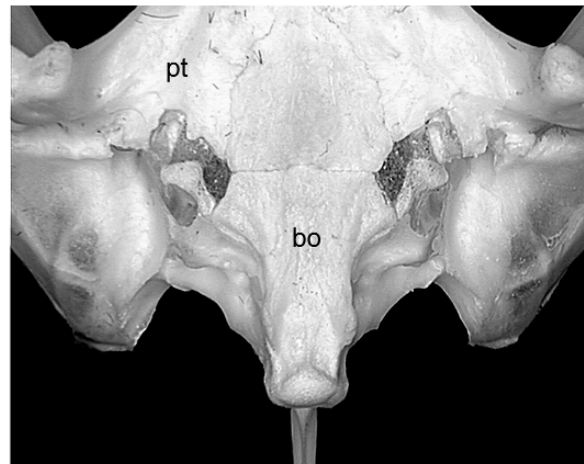


Figure 42. Character 21(1): CAS 228338, *reticularia*, ventral view of brain case.

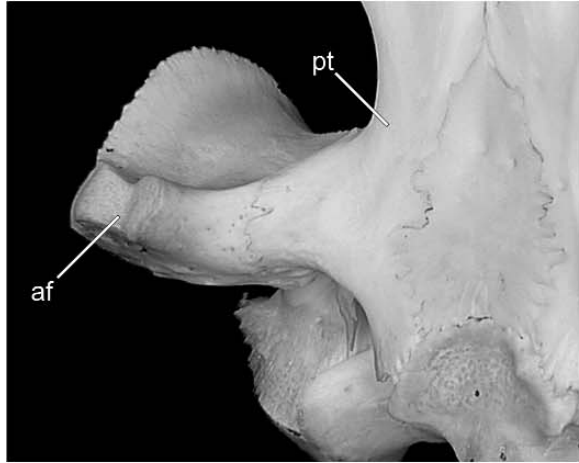


Figure 43. Character 22(0): CAS 228443, *grandis*, ventromedial view of right basicranium.

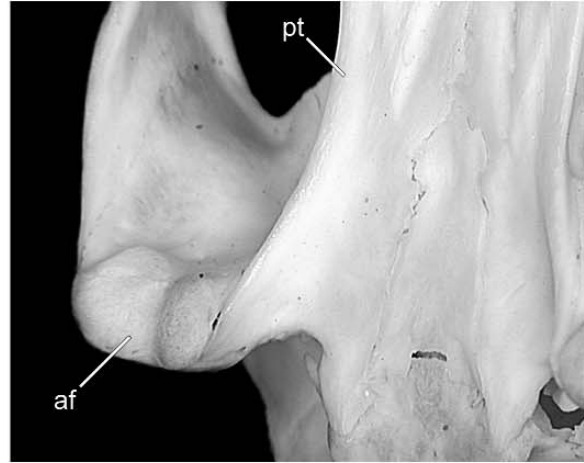


Figure 44. Character 22(1): CAS 228445, *subtrijuga*, ventromedial view of right basicranium.

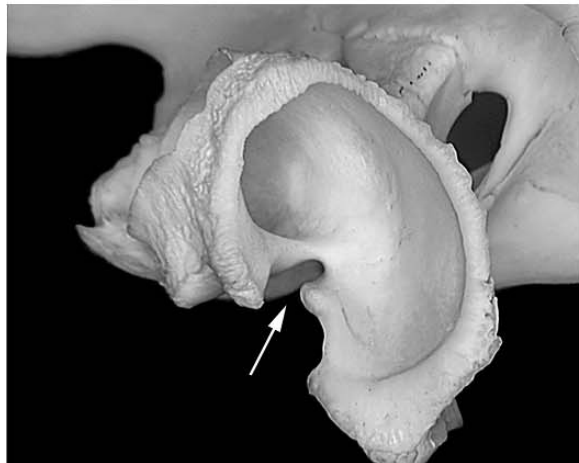


Figure 45. Character 23(0): CAS 228437, *texana*, right lateral view of quadrate.



Figure 46. Character 23(1): CAS 228342, *N. platynota*, right lateral view of quadrate.

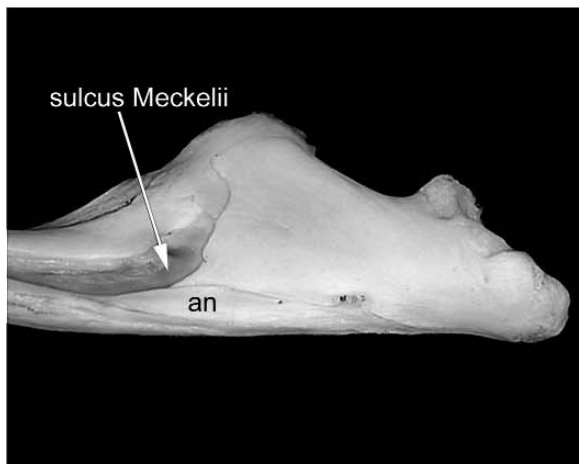


Figure 47. Character 24(0): CAS 228447, *orbicularis*, right lateral view of mandible.

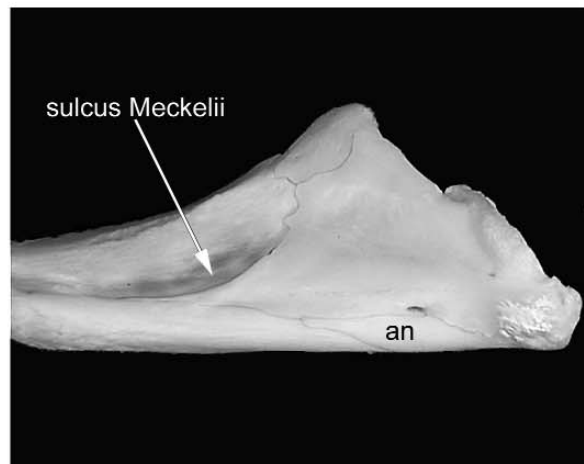


Figure 48. Character 24(1): CAS 228335, *crassicollis*, right lateral view of mandible.



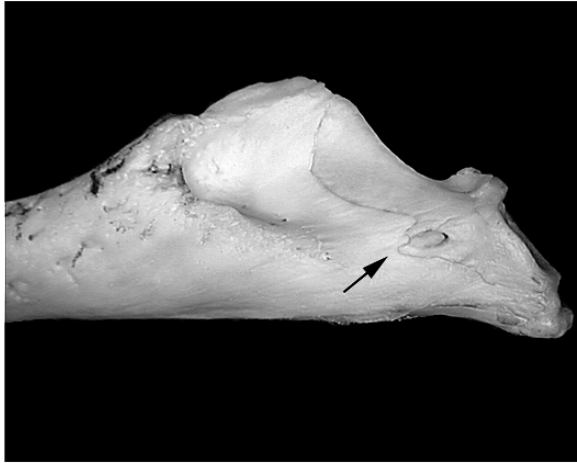


Figure 49. Character 25(0): CAS 228447, *orbicularis*, left lateral view of mandible.

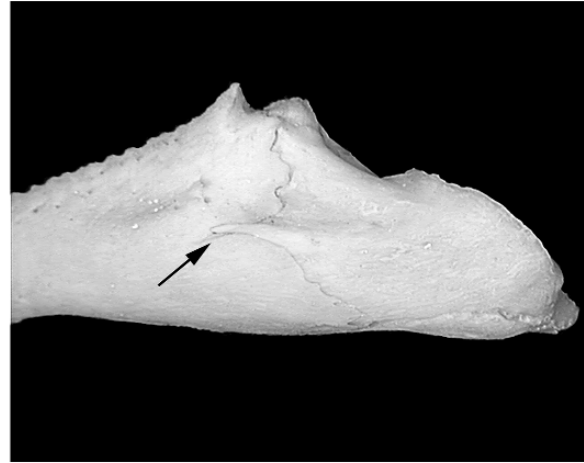


Figure 50. Character 25(1): CAS 228411, *carbonaria*, left lateral view of mandible.



Figure 51. Character 26(0): CAS 228404, *belliana*, left lateral view of mandible.

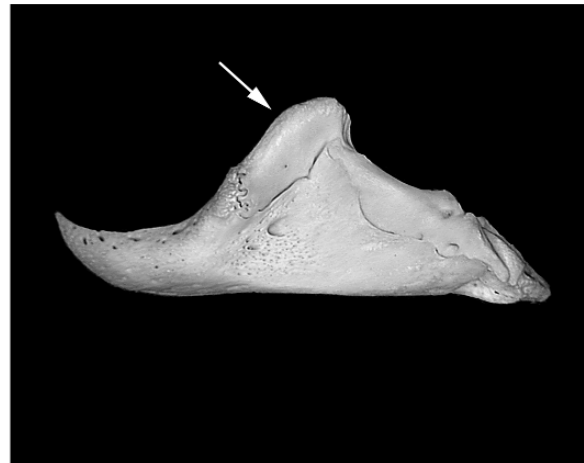


Figure 52. Character 26(1): CAS 228361, *reevesii*, left lateral view of mandible.

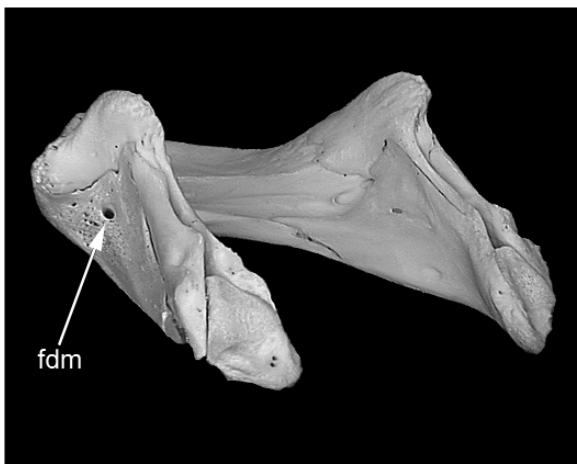


Figure 53. Character 27(0): CAS 228361, *reevesii*, left posterolateral view of mandible.

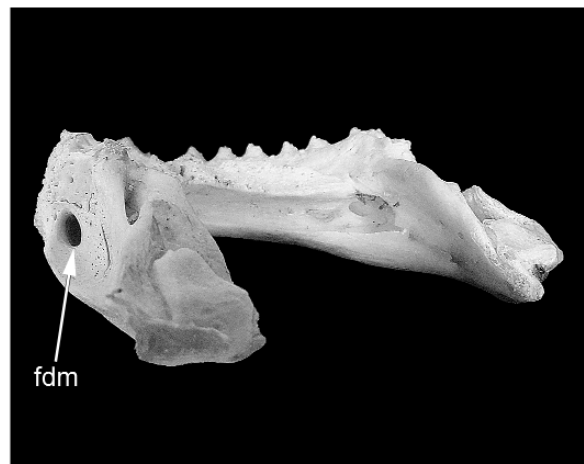


Figure 54. Character 27(1): YPM 10861, *thurjii*, left posterolateral view of mandible.



Figure 55. Character 28(0): CAS 228342, *N. platynota*, ventral view of palate.

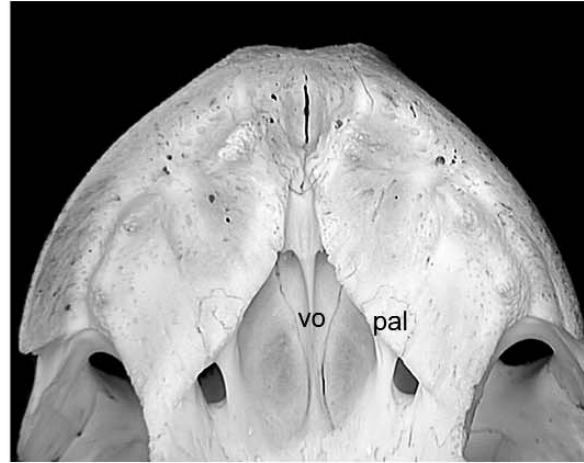


Figure 56. Character 28(1) and 29(0): CAS 228437, *texana*, ventral view of palate.

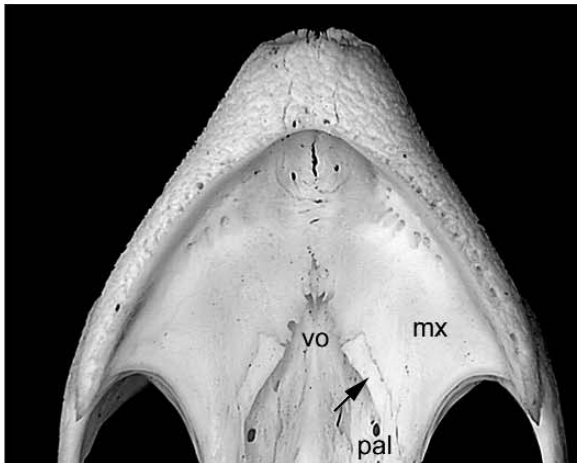


Figure 57. Character 28(1) and 29(0): CAS 228445, *subtrijuga*, ventral view of palate.



Figure 58. Character 29(0): CAS 228419, *amboinensis*, ventral view of palate.



Figure 59. Character 29(1): CAS 228361, *reevesii*, ventral view of palate.



Figure 60. Character 30(0), 31(0), and 32(0): CAS 228447, *orbicularis*, oblique ventral view of palate.



Figure 61. Character 30(1) and 31(1): CAS 228437, *texana*, oblique ventral view of palate.

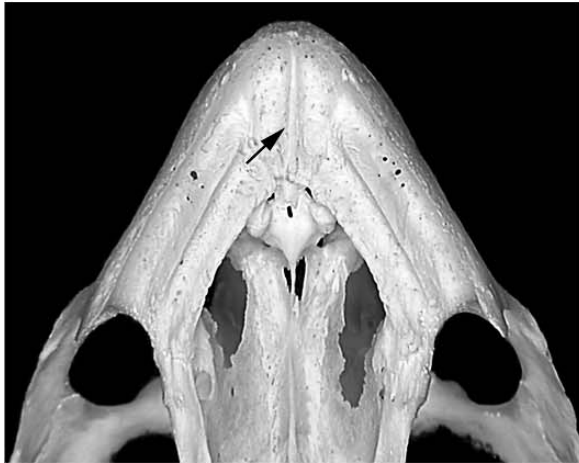


Figure 62. Character 30(1) and 32(1): TMM 2813, *berlandieri*, ventral view of palate.

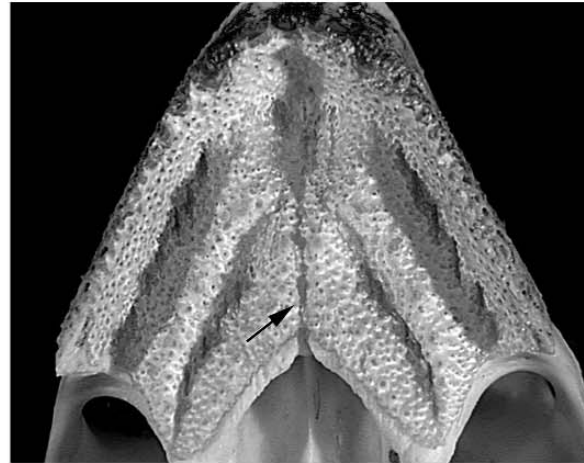


Figure 63. Character 32(2): CM 124246, *petersi*, ventral view of palate.



Figure 64. Character 33(0): CAS 228443, *grandis*, dorsal view of mandible.



Figure 65. Character 33(1): CAS 228361, *reevesii*, dorsal view of mandible.



Figure 66. Character 34(0) and 35(0): CAS 228448, *blandingii*, dorsal view of carapace.



Figure 67. Character 34: CAS 228451, *crassicollis*, dorsal view of juvenile carapace showing tricarinae.



Figure 68. Character 34(1) and 35(1): CAS 228444, *mouhotii*, dorsal view of carapace.

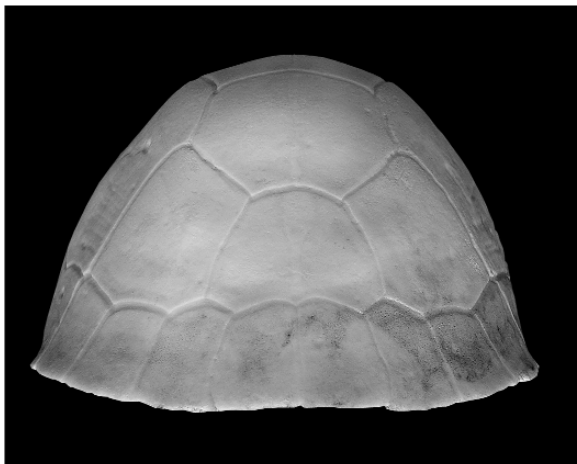


Figure 69. Character 36(0): CAS 228376, *galbinifrons*, posterior view of shell.

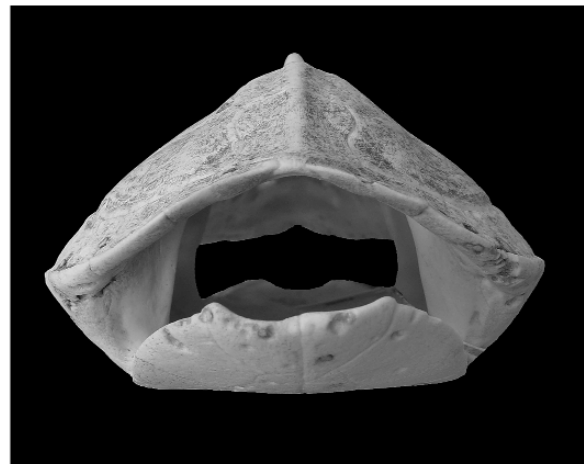


Figure 70. Character 36(1): CM 259430, *tentoria*, anterior view of shell.

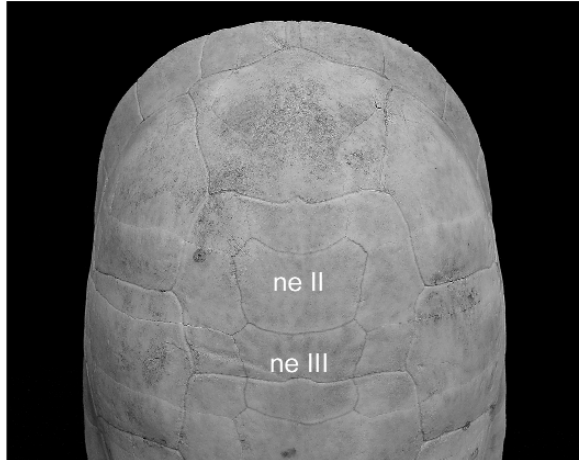


Figure 71. Character 37(0) and 38(0): CAS 228346, *blandingii*, dorsal view of carapace.

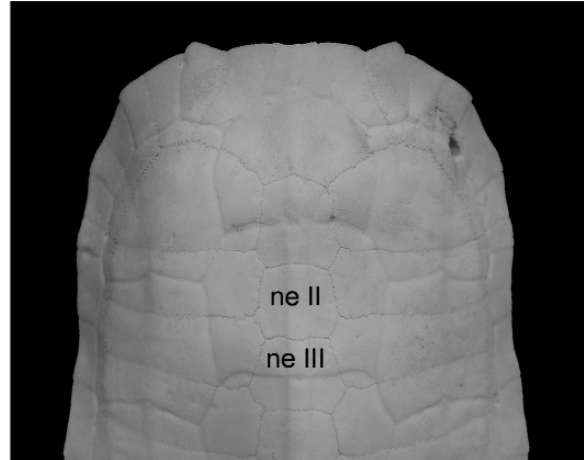


Figure 72. Character 37(1) and 38(1): CAS 228343, *spengleri*, dorsal view of carapace.

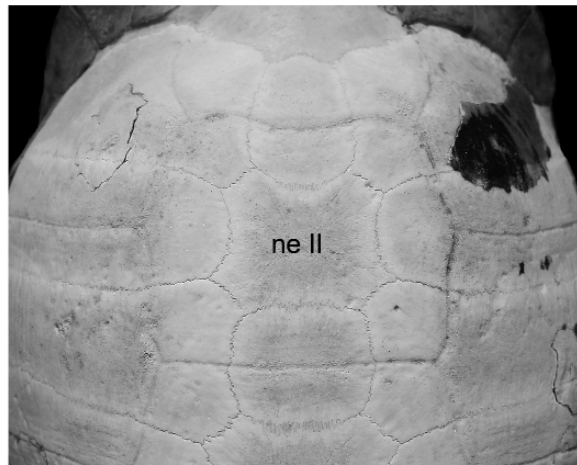


Figure 73. Character 37(2): CAS 228408, *elongata*, dorsal view of carapace.

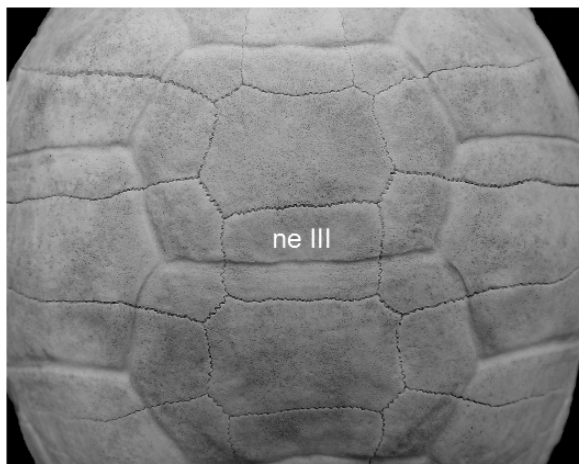


Figure 74. Character 38(2): CAS 228399, *horsfieldi*, dorsal view of carapace.

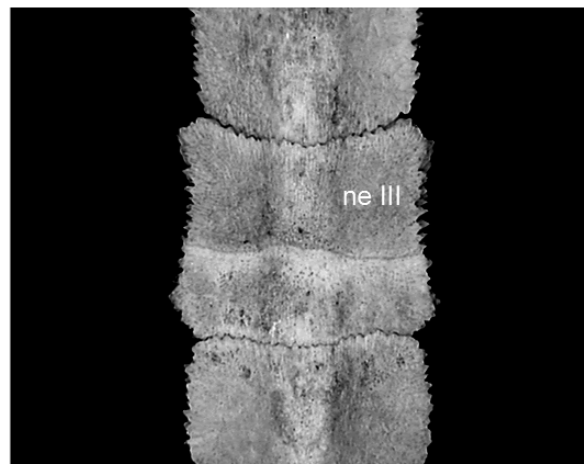


Figure 75. Character 38(3): CAS 228445, *subtrijuga*, dorsal view of neurals II - IV.



Figure 76. Character 39(0): CAS 228399, *horsfieldi*, posterodorsal view of carapace.

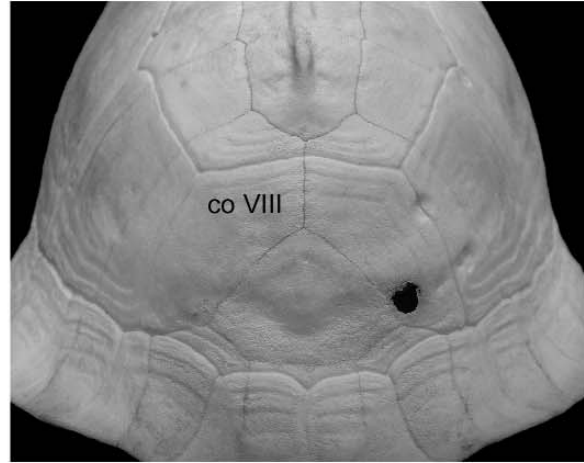


Figure 77. Character 39(1): CAS 228375, *carolina*, posterodorsal view of carapace.

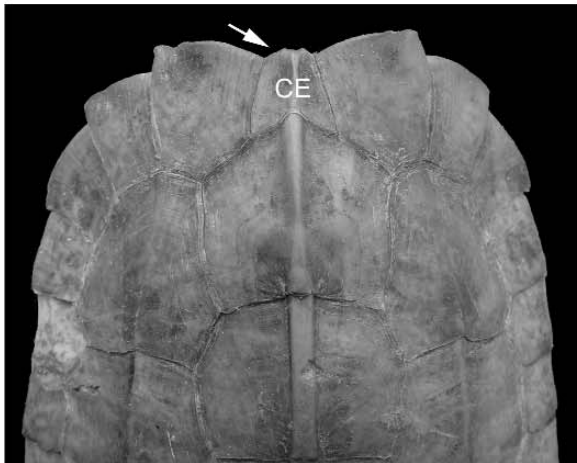


Figure 78. Character 40(0): CAS 228371, *spengleri*, dorsal view of carapace.

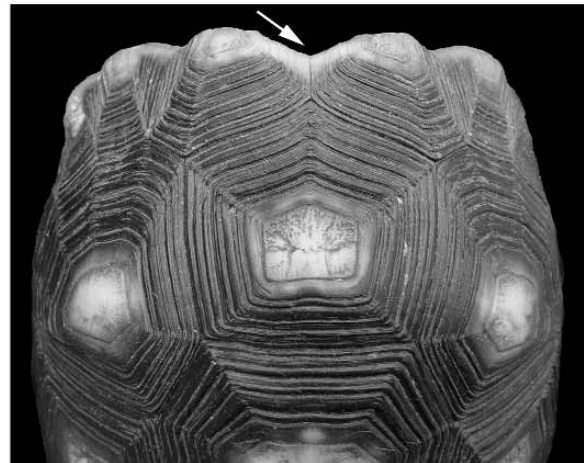


Figure 79. Character 40(1): CAS 228430, *carbonaria*, anterodorsal view of carapace.

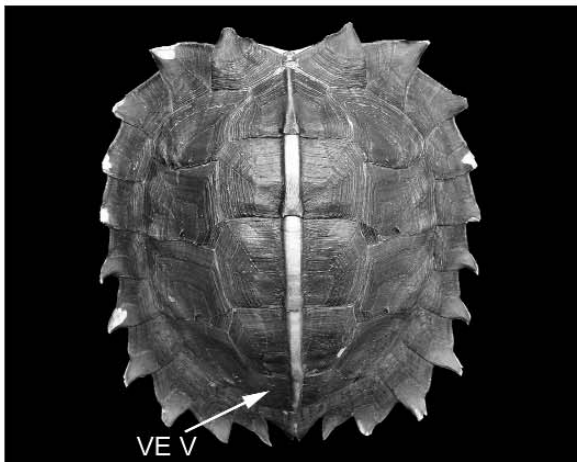


Figure 80. Character 41(0): CAS 228368, *spinosa*, dorsal view of carapace.



Figure 81. Character 41(1): CAS 228450, *N. platynota*, dorsal view of carapace.

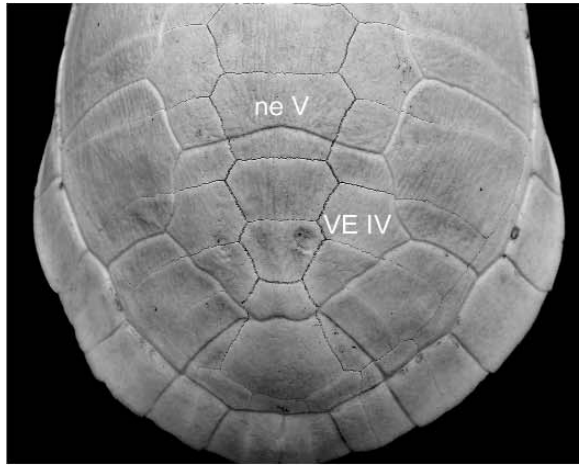


Figure 82. Character 42(0): CAS 228338, *reticularia*, posterodorsal view of carapace.

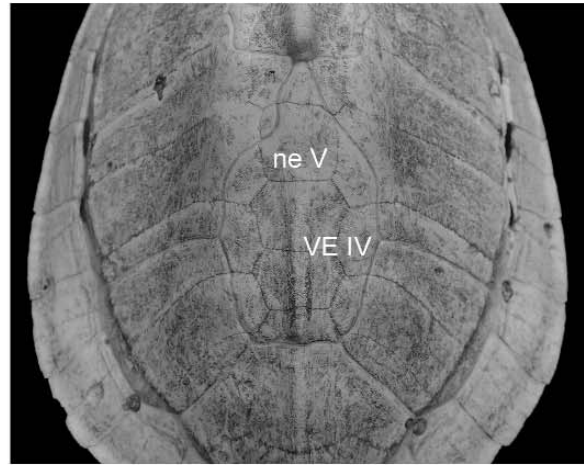


Figure 83. Character 42(1): FMNH 259430, *tentoria*, posterodorsal view of carapace.

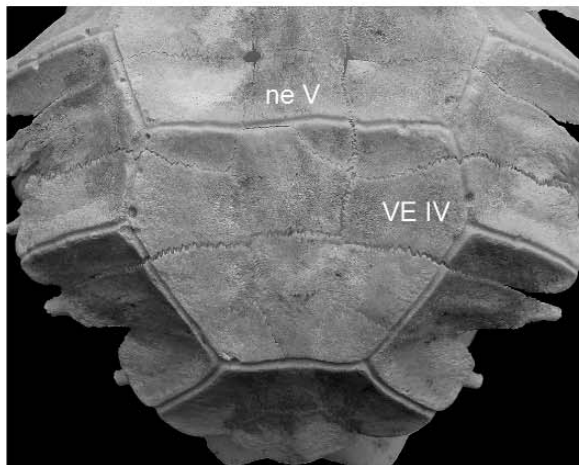


Figure 84. Character 42(2): CAS 228344, *emys*, posterodorsal view of carapace.

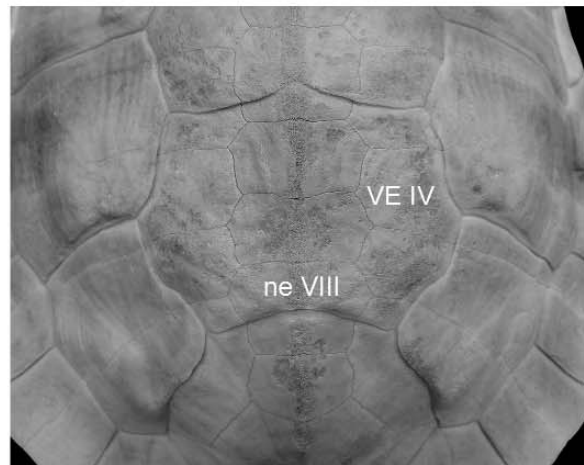


Figure 85. Character 43(0): CAS 228413, *insculpta*, posterodorsal view of carapace.

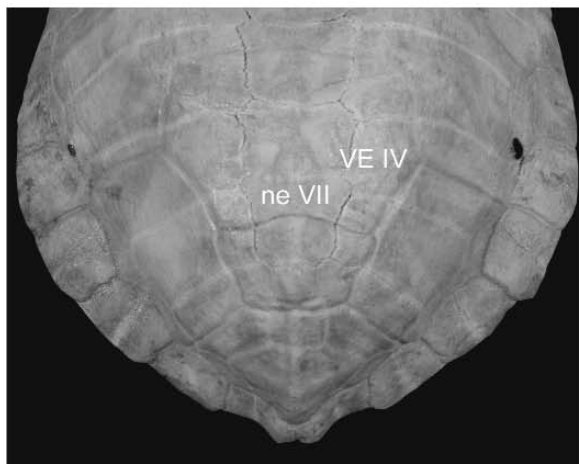


Figure 86. Character 43(1): YPM 14678, *platynota*, posterodorsal view of carapace.

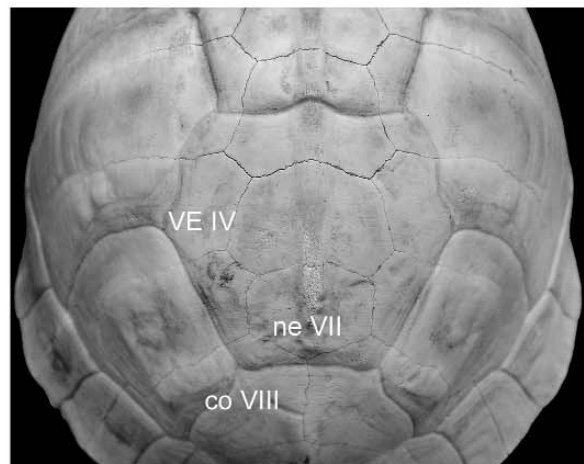


Figure 87. Character 43(2): CAS 228345, *amboinensis*, posterodorsal view of carapace.

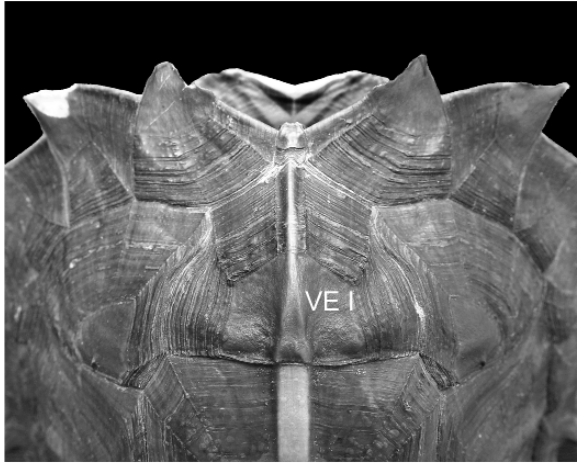


Figure 88. Character 44(0): CAS 228368, *spinosa*, dorsal view of carapace.

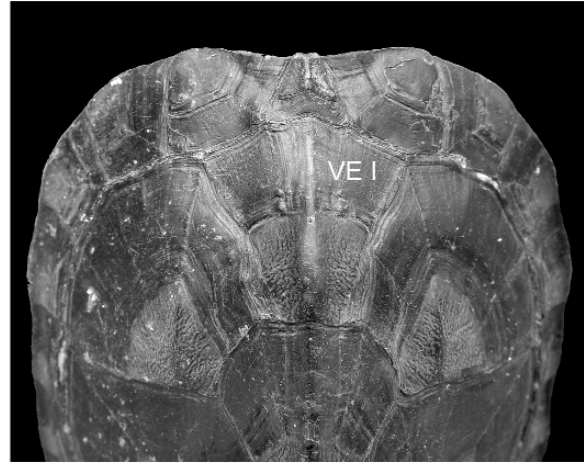


Figure 89. Character 44(1): CAS 228335, *crassicollis*, dorsal view of carapace.

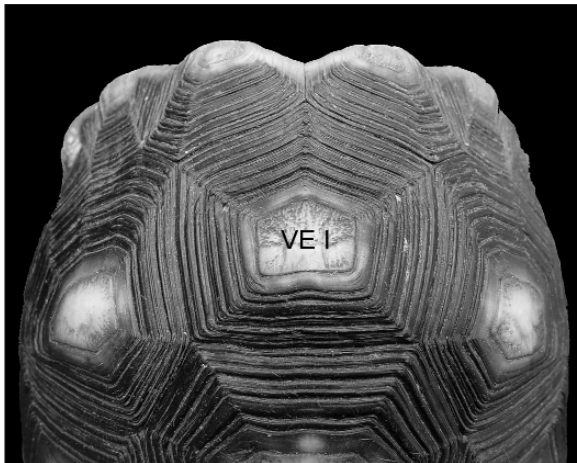


Figure 90. Character 45(0): CAS 228430, *carbonaria*, anterodorsal view of carapace.

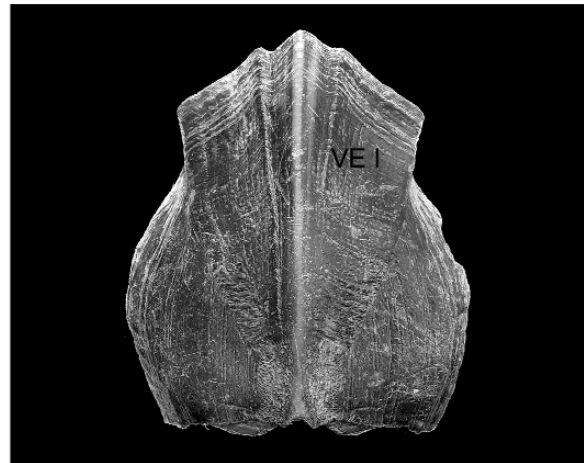


Figure 91. Character 45(1): CAS 228341, *grandis*, dorsal view of first vertebral scute, anterior to top.

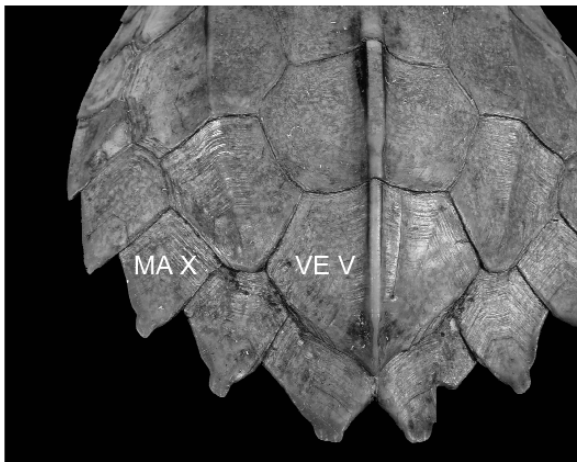


Figure 92. Character 46(0): YPM 11653, *spengleri*, posterodorsal view of carapace.

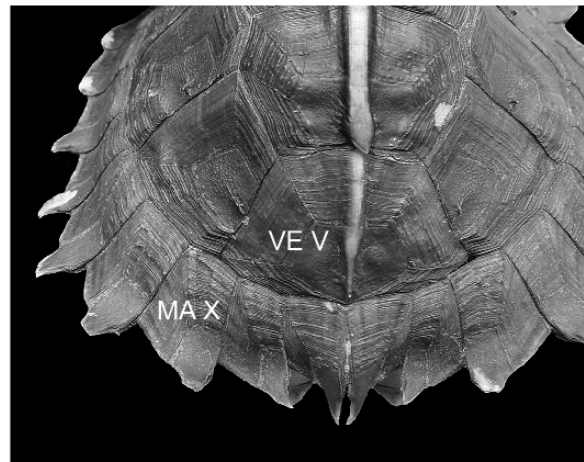


Figure 93. Character 46(1): CAS 228368, *spinosa*, posterodorsal view of carapace.