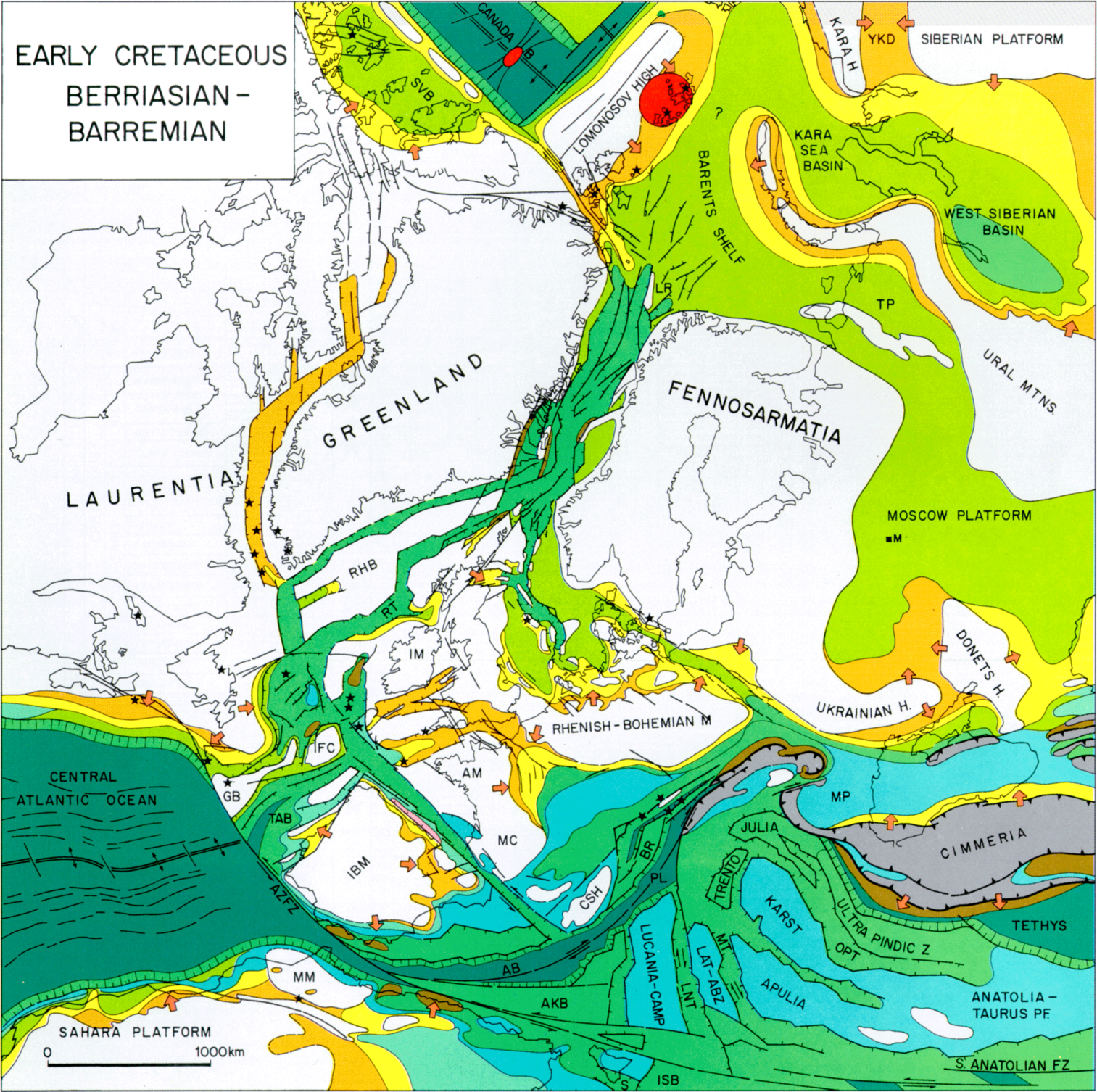


EARLY CRETACEOUS
BERRIASIAN -
BARREMIAN



DEPOSITIONAL ENVIRONMENT AND PRINCIPAL LITHOLOGY

- | | | | |
|--|-----------------------------------------|--|------------------------------------------|
| | MAINLY CONTINENTAL CLASTICS | | MAINLY EVAPORITES |
| | DELTAIC-SHALLOW MARINE, MAINLY SANDS | | EVAPORITES, CLASTICS AND CARBONATES |
| | SHALLOW MARINE, MAINLY SHALES | | EVAPORITES AND CARBONATES |
| | SHALLOW MARINE, CARBONATES AND CLASTICS | | DEEPER MARINE CLASTICS AND/OR CARBONATES |
| | SHALLOW MARINE, MAINLY CARBONATES | | DEEPER MARINE, MAINLY SANDS (FLYSCH) |
| | EVAPORITES AND CLASTICS | | BASINS FLOORED BY OCEANIC CRUST |

POSITIVE AREAS

- | | |
|--|----------------------|
| | ACTIVE FOLD BELTS |
| | INACTIVE FOLD BELTS |
| | ANOROGENIC, CRATONIC |

VOLCANIC ACTIVITY

- | | |
|--|-----------------|
| | PLATEAU BASALTS |
| | ANOROGENIC |
| | OROGENIC |

AUXILIARY SYMBOLS

- | | | | |
|--|------------------------|--|-----------------------------------|
| | FAULTS, WRENCH, NORMAL | | DIRECTION OF CLASTIC INFLUX |
| | MAJOR THRUST FAULTS | | CONTINENTAL SLOPE |
| | SUBDUCTION ZONES | | ACTIVE SEA-FLOOR SPREADING AXIS |
| | MAJOR ANTICLINAL AXIS | | AS ABOVE, WITH MAGNETIC ANOMALIES |

- | | | | |
|---------|------------------------|-----|----------------------------------------|
| AB | ALBORAN BASIN | MC | MASSIVE CENTRAL |
| AKB | ALBORAN-KABYLIAN BLOCK | MM | MOROCCO-MESETA |
| AM | ARMORICAN MASSIF | MP | MOESIAN PLATFORM |
| AZ FZ | AZORES FRACTURE ZONE | MT | MOLISE TROUGH |
| BR | BRIANÇONNAIS | OPT | OLENOS-PINDOS TROUGH |
| CSH | CORSICA-SARDINA HIGH | PL | SOUTH PENNINIC-PIEDMONT-LIGURIAN BASIN |
| FC | FLEMISH CAP | RHB | ROCKALL-HATTON BANK |
| GB | GRAND BANKS | RT | ROCKALL TROUGH |
| IBM | IBERIA MESETA | S | STREPPANOSA BASIN |
| IM | IRISH MASSIF | SVB | SVERDRUP BASIN |
| ISB | IONIAN SEA BASIN | TAB | TAGUS ABYSSAL PLAIN |
| LAT ABZ | LATIU-ABRUZZI BLOCK | TP | TIMAN-PECHORA AREA |
| LNT | LAGONEGRO TROUGH | YKD | YENISSEI-KHATANGA DEPRESSION |
| LR | LOPPA RIDGE | | |