

Development of Mice with Brain-Specific Deletion of Floxed *Glud1* (Glutamate Dehydrogenase 1) Using Cre Recombinase Driven by the Nestin Promoter

Melis Karaca · Pierre Maechler

Received: 21 December 2012/Revised: 8 April 2013/Accepted: 9 April 2013/Published online: 18 April 2013
© Springer Science+Business Media New York 2013

Abstract In the brain, *Glud1*-encoded glutamate dehydrogenase plays a major role in the recycling of the neurotransmitter glutamate. We recently reported a new model of brain-specific *Glud1* null mice (*Cns-Glud1*^{-/-}) lacking glutamate dehydrogenase in the central nervous system. *Cns-Glud1*^{-/-} mice exhibit reduced astrocytic glutamate breakdown and redirection of glutamate pathways without altering synaptic transmission. *Cns-Glud1*^{-/-} mice were generated using LoxP and Nestin-Cre technology. Nestin-Cre mice are widely used to investigate gene deletion in the central nervous system. However, the *Nes-Cre* transgene itself was reported to induce a phenotype related to body weight gain. Here, we review the potential side-effects of *Nes-Cre* and analysed *Cns-Glud1*^{-/-} body weight gain. Overall, Nestin-Cre mice may exhibit transient and moderate growth retardation during the few weeks immediately following weaning. Pending appropriate controls and homogenization of the genetic background, Nestin-Cre technology is a valuable tool enabling disruption of genes of interest in the central nervous system.

Keywords Glutamate dehydrogenase · *Glud1* · Brain · Nestin-Cre

Glucose is the major source of energy delivered to the central nervous system (CNS) by peripheral organs. However,

within the brain, oxidative catabolism of the neurotransmitter glutamate might significantly contribute to ATP production and maintenance of energy homeostasis. Upon glutamate transmission, intersynaptic glutamate clearance is achieved mostly by astrocytes [1]. Active astrocytic internalization of glutamate also ensures detoxification of the extracellular space. However, altered glutamate handling is associated with various neurodegenerative diseases; such as Parkinson's disease, epilepsy, schizophrenia, and Alzheimer's disease [2]. Following its uptake by astrocytes glutamate may be amidated to glutamine and then recycled back to glutamate once transferred to neurons (Fig. 1a). Alternatively, astrocytic glutamate may be deaminated to α -ketoglutarate within mitochondria. This pathway is catalysed either by transaminases or by glutamate dehydrogenase (GDH) before oxidative catabolism in the TCA cycle, thereby promoting ATP generation [3]. In the CNS, GDH is predominantly expressed in astrocytes and to lower levels in neurons [4, 5]. GDH catalyses either the anabolic amination of α -ketoglutarate to glutamate or the catabolic oxidation of glutamate [3]. The enzyme forms homohexamers in mitochondria and is encoded by *Glud1* in all vertebrates [6]. Additionally, a second isoform is found in humans [7], being expressed mostly in astrocytes and testicular supporting cells [8].

We recently reported a new model of brain-specific *Glud1* null mice (*Cns-Glud1*^{-/-}) lacking GDH in the CNS [9]. In astrocytes lacking GDH, oxidative catabolism of glutamate to CO₂ is reduced, indicating lower astrocytic glutamate breakdown. However, brain-targeted NMR measurements have shown that *Cns-Glud1*^{-/-} glutamate levels are maintained to control values, while glutamine concentrations are increased in *Cns-Glud1*^{-/-} brains [9]. This modified pattern of glutamate/glutamine ratio does not induce over-excitability or hypo-excitability. These data

Special Issue: In honor of Andreas Plaitakis.

M. Karaca · P. Maechler (✉)
Department of Cell Physiology and Metabolism, University of
Geneva Medical Centre, 1 rue Michel-Servet, 1211 Geneva 4,
Switzerland
e-mail: Pierre.Maechler@unige.ch

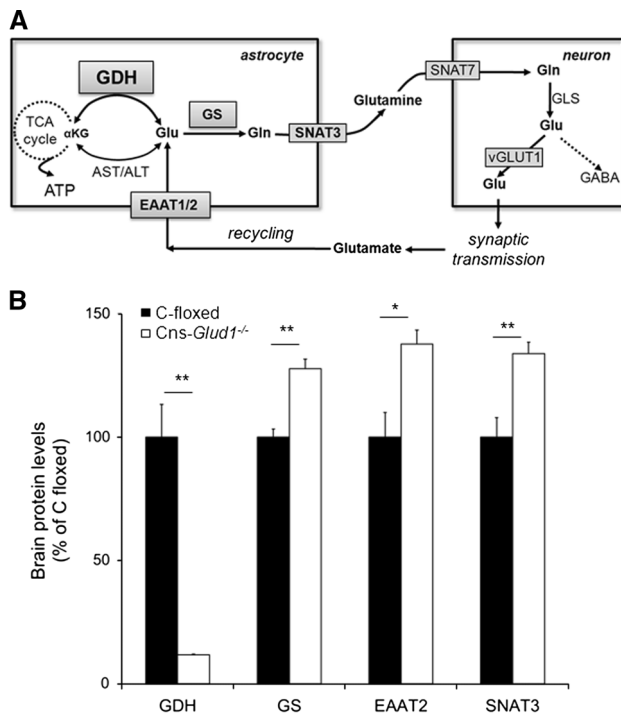


Fig. 1 Abrogation of GDH in brain affects glutamate handling. **a** Simplified representation of glutamate fates in astrocytes and neurons (α KG, α -ketoglutarate; ALT, alanine aminotransferase; AST, aspartate aminotransferase; EAAT 1/2, excitatory amino acid transporters 1/2; GDH, glutamate dehydrogenase; Gln, glutamine; GLS, glutaminase; Glu, glutamate; GS, glutamine synthetase; SNAT 3/7, sodium-coupled amino acid transporters 3/7; vGLUT1, vesicular glutamate transporter 1). **b** Protein levels analysed by immunoblotting [9] of enzymes/transporters related to glutamate pathway in brains from CNS-specific *Glud1* knockout (*Cns-Glud1*^{-/-}) and *Glud1*^{lox/lox} floxed control (C-floxed) mice. Actin (for GDH) and ezerin (for GS, EAAT2 and SNAT3) served as loading control. Values are mean \pm SE, $n = 2-5$, * $p < 0.05$ and ** $p < 0.01$ using the Student's *t* test

suggest preservation of glutamate homeostasis in GDH-null brains, at the expense of an increase in glutamine formation. Redirection of glutamate pathways in *Cns-Glud1*^{-/-} brains is apparently favoured by up-regulation of astrocyte-type glutamate and glutamine transporters and of glutamine synthetase (Fig. 1b and [9]). The *Cns-Glud1*^{-/-} mouse model represents a unique tool to explore the importance of GDH as a key enzyme connecting glucose and glutamate metabolism within the CNS. Furthermore, given the dys-regulation of glutamate in neurodegenerative diseases, GDH appears as a potent target for management of related neurological disorders.

We generated the *Cns-Glud1*^{-/-} brain-specific GDH knockout mice by crossing *Glud1* floxed (*Glud1*^{lox/lox}) mice [10] with animals expressing the *Cre* recombinase under the control of Nestin *cis*-regulatory (*Nes-Cre*) sequence [11]. Heterozygous *Cns-Glud1*^{+/-} were then crossed with *Glud1*^{lox/lox} mice to obtain homozygous *Cns-Glud1*^{-/-}, while

Cre was kept heterozygous [9]. In this specific study [9], animals were maintained on a mixed genetic background (C57BL/6 J \times 129/Sv) to avoid inbred strain-specific phenotypes. Accordingly, floxed *Glud1*^{lox/lox} littermates of *Cns-Glud1*^{-/-} knockouts were used as control animals to optimize standardization of the genetic background between the two groups [9]. In other words, only *Cns-Glud1*^{-/-} knockout mice carried the *Nes-Cre* transgene. No gender differences were noticed.

The *Cre* transgenic lines represent invaluable tools to explore the role of a given protein in a specific tissue (conditional knockout, that can additionally be time-specific (inducible *Cre* systems). Nevertheless, one should consider appropriate controls according to potential *Cre*-mediated effects. Some studies have reported side effects or phenotypes associated with *Cre* activity or transgene insertion [12–14]. For instance, the cause of haematological abnormalities after the systemic activation of *CreER*^{T2} described by Higashi et al. [15] was proposed to be the consequence of *Cre*-mediated genomic rearrangements. Such rearrangement within the mouse genome might happen at pseudo-*loxP* sites, which have been shown to serve as substrates for *Cre* recombinase [15–17]. Some of the unexpected phenotypes associated with the presence of the *Cre* transgene might be due to the disruption of the genome loci where the transgene was integrated.

Another potential confounding effect of *Cre* technology is the misplaced recombination of the floxed target-gene. This is illustrated by some mouse models used to study insulin-secreting cells. In order to target *Cre*-mediated recombination of floxed genes specifically in pancreatic beta-cells, *Rip-Cre* mice have been generated. These animals express the *Cre* recombinase under the control of the rat insulin (*Ins2*) promoter (*Rip-Cre*). However, infidelity of *Rip-Cre* transgene in the hypothalamus has been noticed in one transgenic line (*Tg(Ins2-cre)*^{25Mgn}) [18], although not particularly in another one (*Tg(Ins2-cre)*^{1Herr}) [19], potentially altering gene expression in nutrient-sensing neurons [20]. Such undesired hypothalamic effect might render the transgenic animals more likely to develop glucose intolerance under specific genetic backgrounds. Indeed, it was shown that perturbations in glucose homeostasis observed in a *Tg(Ins2-cre)*^{25Mgn} transgenic line [18] can be accounted for by differences in genetic background [21]. Therefore, misplaced recombination combined with C57BL/6 J background might influence metabolic homeostasis and potentially contribute to a phenotype not fully specific for the beta-cell.

Some studies may have attributed roles to a target-gene, which were in fact partly or fully due to *Cre* toxicity. Limitation of *Cre* technology should not hide other possible pitfalls, potentially more disturbing. Indeed, *Cre*-mediated effects do not rule out alternative major confounding factors, primarily the genetic background, as discussed

above. Whenever possible, the genetic background should be homogenized between the studied groups [22], similarly to human studies based on twins [23].

Nestin-Cre mice are widely used to investigate gene deletion and cell function in the CNS. However, the *Nes-Cre* transgene itself was reported to induce a phenotype related to body weight gain. Indeed, it was observed that Nestin-Cre mice have smaller body weights [24], an effect not observed by others [25]. These apparently conflicting results have not been particularly highlighted to the scientific community, as they appeared as Supplementary Materials [24] and Addendum [25] to their respective papers. Maintained on a pure C57BL/6J background, Nestin-Cre mice purchased from the Jackson Laboratory (Origin, R. Klein, EMBL) display mild hypopituitarism [26]. Discrepancies between laboratories regarding body growth suggest that *Nes-Cre* transgene may render animals more susceptible to factors such as the genetic background or subtle environment specificities. This might have physiological consequences, in particular when *Nes-Cre* transgene is associated with the deletion of genes implicated in metabolic control. The

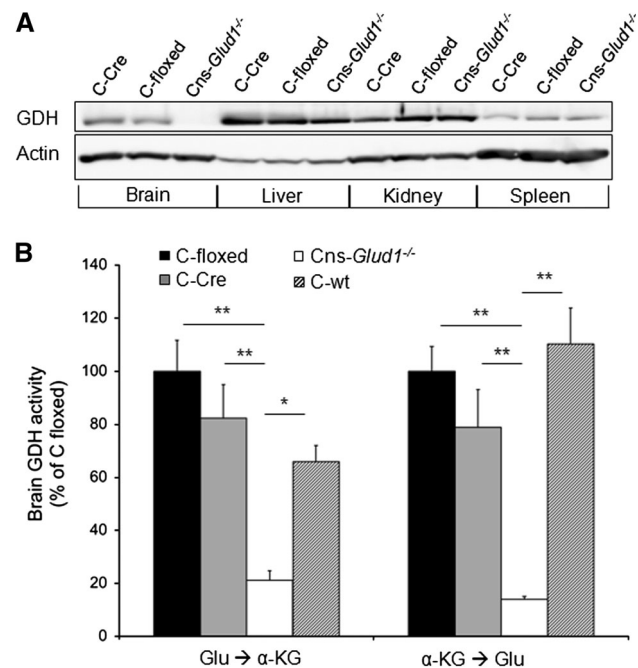


Fig. 2 Expression and activity of GDH in *Cns-Glud1*^{-/-} mice. **a** Brain-specific GDH deletion in *Cns-Glud1*^{-/-} mice was assessed by immunoblotting. GDH expression in brains was compared with non-excitable tissues collected from *Glud1*^{lox/lox} floxed control (C-floxed), *Nes-Cre* control (C-Cre) and CNS-specific *Glud1* knockout (*Cns-Glud1*^{-/-}) mice. Actin served as loading control. Immunoblots are representative of 3 independent preparations. **b** Brain GDH enzymatic activity of C-floxed, C-Cre, *Cns-Glud1*^{-/-}, and wild type control (C-wt) mice measured in both oxidative and reductive directions [10], using glutamate (Glu) and α-ketoglutarate (α-KG) as substrates, respectively. Values are mean ± SE, *n* = 5–7, * *p* < 0.05 and ** *p* < 0.01 using one-way ANOVA

widespread use of Nestin-Cre mice has led to an increasing awareness of potential strain-dependent differences in body weight of these mice.

Given these strain differences, we further evaluated the *Cns-Glud1*^{-/-} mice by comparing these conditional knockout animals with both Nestin-Cre controls carrying the *Nes-Cre* transgene (C-Cre) and *Glud1*-floxed controls lacking *Nes-Cre* but having *loxP* sites in the *Glud1* gene (C-floxed). Immunoblotting analyses showed comparable GDH expression in C-Cre and C-floxed brains as well as in non-excitable peripheral tissues known to express GDH (Fig. 2a). Brain GDH enzymatic activity was not significantly different between the two transgenic control groups, *i.e.* C-Cre and C-floxed mice (Fig. 2b). On the contrary, in brain homogenates of *Cns-Glud1*^{-/-} mice we observed abrogation of GDH activity, both in the oxidative deamination and in the reductive amination directions. Wild type control (C-wt) mice exhibited brain GDH activity

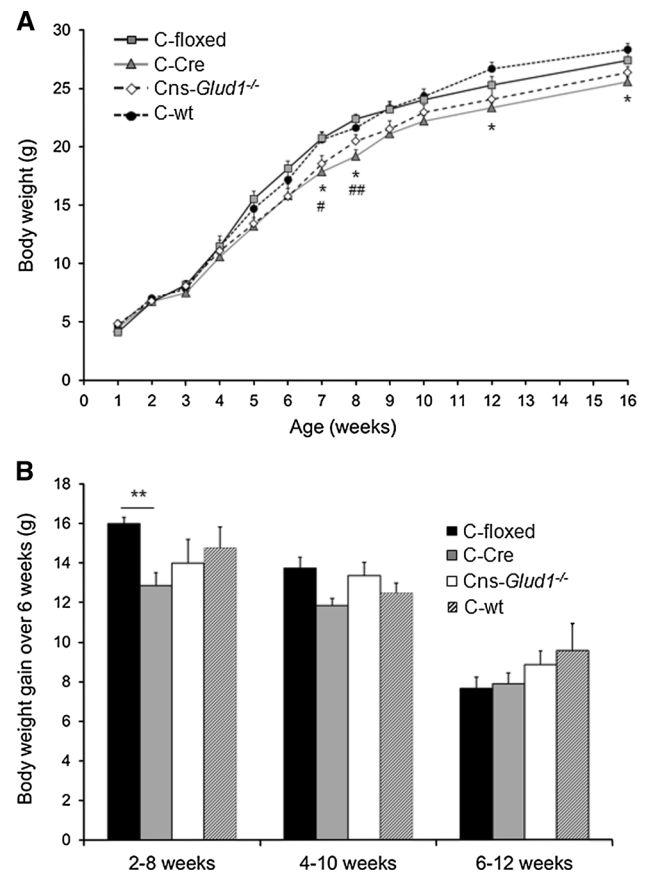


Fig. 3 Effects of *Nes-Cre* and *Cns-Glud1*^{-/-} on body weight. **a** Body weights from *Glud1*^{lox/lox} floxed control (C-floxed), *Nes-Cre* control (C-Cre), CNS-specific *Glud1* knockout (*Cns-Glud1*^{-/-}), and wild type control (C-wt) mice recorded over 16 weeks of life after birth. **b** Increases in body weight for periods of 6 weeks measured over 2–8, 4–10 and 6–12 weeks of age. Values are mean ± SE; *n* = 7–27; * *p* < 0.05, ** *p* < 0.01 C-Cre versus C-wt; # *p* < 0.05, ### *p* < 0.01 C-Cre versus C-floxed, using one-way ANOVA

comparable to the transgenic controls C-Cre and C-floxed (Fig. 2b). Regarding body growth, we observed lower body weights associated with *Nes-Cre* transgene at the age of 7–8 weeks (Fig. 3a) contributed by reduced weight gain during the weeks immediately following weaning (Fig. 3b). The effect was transient and C-Cre animals could catch up body weight in comparison with the other transgenic groups by the age of 10 weeks when body growth stabilized. However, compared to wild type animals having more a C57BL/6J black 6 background, body weights remained slightly lower. Therefore, at the age of 10 weeks onwards, no significant differences in body weights were observed between transgenic mice maintained on a similar mixed genetic background, carrying or not *Nes-Cre* transgene; *i.e.* either C-Cre or *Cns-Glud1*^{-/-} versus *Nes-Cre*-free C-floxed mice. According to these results, we favoured analyses of *Cns-Glud1*^{-/-} mice at the age of 10 weeks onwards [9].

In conclusion, use of Nestin-Cre mice requires special attention regarding interpretation of body weight gain, in particular during the few weeks immediately following weaning. Pending appropriate controls and homogenization of the genetic background, Nestin-Cre technology is a valuable tool enabling disruption of genes of interest in the CNS. For instance, *Cns-Glud1*^{-/-} mice lacking GDH in the CNS uncovered the fine tuning and compartmentalization of glutamate-glutamine handling in the brain.

Acknowledgments The author's laboratory benefits from continuous support from the Swiss National Science Foundation and the State of Geneva. This study was also supported by a grant from the Synapsis Foundation.

References

- Anderson CM, Swanson RA (2000) Astrocyte glutamate transport: review of properties, regulation, and physiological functions. *Glia* 32:1–14
- Kim K, Lee SG, Kegelman TP et al (2011) Role of excitatory amino acid transporter-2 (EAAT2) and glutamate in neurodegeneration: opportunities for developing novel therapeutics. *J Cell Physiol* 226:2484–2493
- Karaca M, Frigerio F, Maechler P (2011) From pancreatic islets to central nervous system, the importance of glutamate dehydrogenase for the control of energy homeostasis. *Neurochem Int* 59:510–517
- Mastorodemos V, Zaganas I, Spanaki C, Bessa M, Plaitakis A (2005) Molecular basis of human glutamate dehydrogenase regulation under changing energy demands. *J Neurosci Res* 79:65–73
- Rothe F, Brosz M, Storm-Mathisen J (1994) Quantitative ultrastructural localization of glutamate dehydrogenase in the rat cerebellar cortex. *Neuroscience* 62:1133–1146
- Michaelidis TM, Tzimagiorgis G, Moschonas NK, Papamatheakis J (1993) The human glutamate dehydrogenase gene family: gene organization and structural characterization. *Genomics* 16:150–160
- Shashidharan P, Michaelidis TM, Robakis NK, Kresovali A, Papamatheakis J, Plaitakis A (1994) Novel human glutamate dehydrogenase expressed in neural and testicular tissues and encoded by an X-linked intronless gene. *J Biol Chem* 269:16971–16976
- Spanaki C, Zaganas I, Kleopa KA, Plaitakis A (2010) Human GLUD2 glutamate dehydrogenase is expressed in neural and testicular supporting cells. *J Biol Chem* 285:16748–16756
- Frigerio F, Karaca M, De Roo M et al (2012) Deletion of glutamate dehydrogenase 1 (Glud1) in the central nervous system affects glutamate handling without altering synaptic transmission. *J Neurochem* 123:342–348
- Carobbio S, Frigerio F, Rubi B et al (2009) Deletion of glutamate dehydrogenase in beta-cells abolishes part of the insulin secretory response not required for glucose homeostasis. *J Biol Chem* 284:921–929
- Tronche F, Kellendonk C, Kretz O et al (1999) Disruption of the glucocorticoid receptor gene in the nervous system results in reduced anxiety. *Nat Genet* 23:99–103
- Forni PE, Scuoppo C, Imayoshi I et al (2006) High levels of Cre expression in neuronal progenitors cause defects in brain development leading to microencephaly and hydrocephaly. *J Neurosci* 26:9593–9602
- Naiche LA, Papaioannou VE (2007) Cre activity causes widespread apoptosis and lethal anemia during embryonic development. *Genesis* 45:768–775
- Schmidt EE, Taylor DS, Prigge JR, Barnett S, Capecchi MR (2000) Illegitimate Cre-dependent chromosome rearrangements in transgenic mouse spermatids. *Proc Natl Acad Sci USA* 97:13702–13707
- Higashi AY, Ikawa T, Muramatsu M et al (2009) Direct hematological toxicity and illegitimate chromosomal recombination caused by the systemic activation of CreERT2. *J Immunol* 182:5633–5640
- Semprini S, Troup TJ, Kotelevtseva N et al (2007) Cryptic loxP sites in mammalian genomes: genome-wide distribution and relevance for the efficiency of BAC/PAC recombinering techniques. *Nucleic Acids Res* 35:1402–1410
- Thyagarajan B, Guimaraes MJ, Groth AC, Calos MP (2000) Mammalian genomes contain active recombinase recognition sites. *Gene* 244:47–54
- Postic C, Shiota M, Niswender KD et al (1999) Dual roles for glucokinase in glucose homeostasis as determined by liver and pancreatic beta cell-specific gene knock-outs using Cre recombinase. *J Biol Chem* 274:305–315
- Herrera PL (2000) Adult insulin- and glucagon-producing cells differentiate from two independent cell lineages. *Development* 127:2317–2322
- Wicksteed B, Brissova M, Yan W et al (2010) Conditional gene targeting in mouse pancreatic α -cells: analysis of ectopic Cre transgene expression in the brain. *Diabetes* 59:3090–3098
- Fex M, Wierup N, Nitert MD, Ristow M, Mulder H (2007) Rat insulin promoter 2-Cre recombinase mice bred onto a pure C57BL/6J background exhibit unaltered glucose tolerance. *J Endocrinol* 194:551–555
- Mishina M, Sakimura K (2007) Conditional gene targeting on the pure C57BL/6 genetic background. *Neurosci Res* 58:105–112
- MacGregor AJ, Snieder H, Schork NJ, Spector TD (2000) Twins. Novel uses to study complex traits and genetic diseases. *Trends Genet* 16:131–134
- Briancon N, McNay DE, Maratos-Flier E, Flier JS (2010) Combined neural inactivation of suppressor of cytokine signaling-3 and protein-tyrosine phosphatase-1B reveals additive, synergistic, and factor-specific roles in the regulation of body energy balance. *Diabetes* 59:3074–3084
- Bence KK, Delibegovic M, Xue B et al (2006) Neuronal PTP1B regulates body weight, adiposity and leptin action. *Nat Med* 12:917–924
- Galichet C, Lovell-Badge R, Rizzoti K (2010) Nestin-Cre mice are affected by hypopituitarism, which is not due to significant activity of the transgene in the pituitary gland. *PLoS ONE* 5:e11443