

High refractive index films of polymer nanocomposites

Lorenz Zimmermann, Martin Weibel, Walter Caseri, and Ulrich W. Suter

Eidgenössische Technische Hochschule, Institut für Polymere, ETH-Zentrum, CH-8092 Zürich, Switzerland

(Received 6 July 1992; accepted 19 March 1993)

Solutions of PbS particles and gelatin were used for the preparation of nanocomposites by a spin-coating process. This allows for the preparation of nanocomposite films with controlled thickness, e.g., between 40 nm and 2 μm for a film containing 45 wt. % PbS. Surface roughness and film thickness were investigated by surface profilometry and scanning electron microscopy (SEM). The refractive index at 632.8 nm can be expressed by a linear function of the volume fraction of PbS in the range of 0 to 55 vol. % PbS. In this range, the refractive index increases from 1.5 to 2.5 with increasing PbS ratio and belongs, therefore, to the highest refractive indices known for polymeric composite materials.

I. INTRODUCTION

Composites between polymers and inorganic particles in the micrometer range are often opaque.^{1,2} Light scattering, responsible for the opacity, can be suppressed either by using materials with nearly matching refractive indices³ or by decreasing the filler's dimensions to a range below ca. 50 nm.^{1,2,4,5} Therefore, nanocomposites of polymers and inorganic colloids can act as optically homogeneous materials with modified optical properties.^{1,2,4,6,7} Nanocomposites containing lead sulfide, for instance, can act as optical filters,⁴ nonlinear optical,⁶ or "ultrahigh" refractive index materials.⁷

The refractive index of polymers is usually between 1.3 and 1.7.⁸ Examples of higher refractive index are, e.g., 2.12 for poly(thiophene)⁹ and 1.7245 for $[\text{CH}_2\text{-CH}=\text{CHCH}_2\text{N}^+(\text{CH}_2\text{CH}_3)_2(\text{CH}_2)_6\text{N}^-(\text{CH}_2\text{CH}_3)_2]_n \cdot n\text{-HgI}_4^{2-}$.¹⁰ Aromatic polyamides can exhibit (isotropic) refractive indices up to 2.05¹¹ or 2.07.¹²

The refractive index of polymers can be enhanced by the addition of colloidal particles with high refractive index,⁷ e.g., PbS that exhibits (at least in crystalline form) a refractive index on the order of 4 in a wide wavelength range.¹³ The highest refractive index for polymeric materials, i.e., pure polymers or polymer composites, has been obtained to date, to our best knowledge, for nanocomposites of lead sulfide and poly(ethyleneoxide).⁷ They exhibit refractive indices of up to 2.9 at 632.8 nm and of up to 3.0–3.4 in the whole range of 1000–2500 nm. These nanocomposites were prepared by adding a hydrogen sulfide solution to a solution containing the polymer and Pb(II) ions. The genesis of colloidal PbS particles and the precipitation of the nanocomposite material take place simultaneously and immediately after addition of hydrogen sulfide. This method allows for the preparation of nanocomposites

filled to ca. 50 vol. % PbS; however, attempts to prepare nanocomposites with a markedly lower PbS-content, e.g., by variation of the initial Pb^{2+} /poly(ethyleneoxide) ratio, failed. Also, experiments aimed at preparing nanocomposite films were inconclusive because of poor film quality.

In this report, we describe the preparation of polymer nanocomposite films with controlled layer thickness and refractive index, starting from homogeneous solutions containing colloidal PbS and a polymer.

II. EXPERIMENTAL

A. Chemical reagents

Gelatin (from pork skin, high gel strength) and lead acetate were obtained from Fluka (Buchs, Switzerland), hydrogen sulfide from Pangas (Lucerne, Switzerland). From gelatin, the following values were obtained by microanalysis: C, 43.41%, H, 6.64%, N, 16.25%, and H_2O , 5.20%.

B. Preparation of nanocomposite films

Hydrogen sulfide solutions were prepared as follows: In a gas wash flask, nitrogen was bubbled for some minutes through ca. 30 ml water under stirring to remove some dissolved oxygen. Then, hydrogen sulfide gas was bubbled through the gas wash flask for 15–30 min; excess hydrogen sulfide was absorbed in sodium hydroxide solution. The concentration of such a hydrogen sulfide solution is 0.04–0.08 M, determined by back-titration with hydrochloric acid.⁷ Higher concentrations (up to 0.17 M) were obtained by cooling the solution during the introduction of the hydrogen sulfide to ca. 5 °C.

For the preparation of films with low PbS content (below 40 wt. %), gelatin (typically ca. 30 mg) was dissolved in water (typically ca. 1 ml) at 50–60 °C, and lead acetate (the amount corresponding to the desired final concentration of PbS in the film) was added after the gelatin was dissolved. For the preparation of films with high PbS content, gelatin (typically 10–50 mg) was dissolved in a 0.1 M lead acetate solution (typically 1.3–2.5 ml) at 50–60 °C. Then, in both cases, the solution was stirred well and cooled to room temperature. Under vigorous stirring hydrogen sulfide solution was added as fast as possible (ca. 1% stoichiometric excess with respect to lead, the solution being at room temperature or at 5 °C, as indicated by the necessary hydrogen sulfide concentration). For the preparation of films with more than ca. 40 wt. % PbS, hydrogen sulfide concentrations of 0.09–0.17 M were used in order to keep the total volume of the solution low. Uniform stirring is important since otherwise coagulation can occur, especially for high PbS/gelatin ratios. After complete mixing the solutions were allowed to stand for 1 h. During this time, gelation increased the viscosity to suitable values for the spin-coating process.

Spin coating was performed on a CONVAC 1001 S/ST 147 using glass substrates, if not otherwise indicated in the text. About three drops of the solution were spread over an area of ca. 10 cm² with a spatula at a spinning rate of 50 rpm (the exact amount of liquid is not critical with respect to the final layer thickness). Thereafter, the spinning rate was increased to 100–4000 rpm, depending on the viscosity of the solution and the required layer thickness. After rotation for 30–90 s, the spinning process was interrupted and started again at 150 rpm for 10 s.

The films then were dried at a pressure of ca. 100 Torr in a slight and constant stream of air. It is important that the film is exactly horizontal for films with high regularity. The stream of air was moistened in order to prevent fissures in the final film. This drying procedure was carried out, e.g., during 2 h for a film thickness of 0.2 µm and 2 days for a film of 30 µm.

Films designated in the text as “annealed films” were subsequently held at 164 °C and 100 Torr for 2 h.

C. Chemical analysis of the nanocomposites

Elemental analysis for carbon and determination of the water content were carried out by Dieter Manser of the Microanalytic Laboratory Service of the Institut für organische Chemie, ETH-Zürich.

Microanalysis of a film containing 40 wt. % PbS (calculated on the basis of the known PbS/gelatin ratio in the solution used for the film preparation) yielded the following values (in parentheses the calculated values based on the analysis of the pure gelatin, see A. Chemical

Reagents): C, 26.53% (26.05%), H, 3.88% (3.98%), N, 9.75% (9.25%), and H₂O, 2.45% (3.12%). This shows in particular that the water/gelatin ratio in the films is comparable to the ratio in “native” gelatin. Further, it was found that the annealing procedure does not reduce the water content significantly.

D. Surface profilometry

Surface profiles, surface roughnesses, and film thicknesses were determined by an Alphastep 200 Surface Profilometer (Tencor Instruments) with a stylus of radius 1.5–2.5 µm. The stylus force was adjusted to 9 mg, and a scan time of 40 s was selected. The surface roughness is calculated as the average deviation in the height of the profile from the mean level. For film thickness measurements, an area of the film was selected that appeared homogeneous to the eye. In this area, a small part of the film was removed with a spatula, creating an artificial step at which the film thickness was determined.

E. Refractive index measurements

Refractive index measurements were performed on a PLASMOS SD 2300 ellipsometer equipped with a He–Ne laser ($\lambda = 632.8$ nm) at an angle of incidence of 70°. Refractive indices were measured at 10 separate spots, and 5 measurements were performed at each spot resulting in a total of 50 measurements per sample. In the text, the corresponding average value is indicated.

To be sure that the measured refractive index is not influenced by interference effects, i.e., reflections of a part of the incident beam on the surface of the substrate (e.g., glass), films of different thicknesses were investigated. An example follows: Films containing 45 wt. % PbS were prepared on glass substrates (refractive index 1.423 ± 0.040 , 95% confidence level) in a thickness range between 40 nm and 2 µm. Between 700 nm and 2 µm thickness, these films show the brown color of colloidal lead sulfide. Their refractive index does not depend on thickness (1.807 ± 0.027 , 95% confidence level). To verify that there is no influence of the substrate, annealed films of 1 and 2 µm were prepared on silicon wafers (refractive index 3.8071 ± 0.0024 , 95% confidence level). Their color is also brown, and the measured refractive indices are 1.818 and 1.802. On glass, refractive indices in the same range are also found for films with a thickness between 40 and 250 nm. They also exhibit a brown color. However, between 250 and 700 nm, the films show interference colors different from brown.^{14,15} In this thickness region, no consistent indices could be deduced from the measurements.

F. Electron microscopy

For transmission electron microscopy, a gelatin capsule (diameter and height ca. 5 mm) was filled with

epon-araldite,¹⁶ turned upside down upon the nanocomposite film (on glass), and cured at 60 °C for 24 h. After cooling to room temperature, the sample was plunged into liquid nitrogen whereupon the polymer components detached from the support. The material was cut in pieces of ca. 4 mm² area and ca. 0.5 mm thickness and embedded again in epon-araldite. After hardening as described above, thin sections (interference color silver) were cut on a Reichert Ultracut Microtome with a diamond knife (Diatome, Biel-Bienne, Switzerland). Sections were floated on the water as trough liquid. The electron micrographs were taken on a Philips EM 301 with an acceleration voltage of 80 kV.

The SEM (scanning electron microscopy) samples were coated with 3 nm platinum-carbon by electron beam evaporation in a BAF 120 (Balzers) device. Specimens were investigated in a Hitachi S-900 in-lens field emission SEM using the secondary electron signal.

III. RESULTS AND DISCUSSION

A. Preparation and characterization of films

Highly filled PbS-polymer nanocomposites can be prepared from homogeneous solutions containing colloidal PbS and polymer (this is favored over exposure to hydrogen sulfide of a film containing Pb²⁺). Among several water-soluble polymers tested, i.e., poly(vinyl alcohol), poly(acrylamide), poly(acrylic acid), poly(ethyleneoxide), and gelatin, the most suitable was found to be gelatin.

The homogeneous polymer-PbS solutions can be used for the preparation of films. The simplest method for this purpose is to evaporate the solvent from a stagnant "puddle", either at ambient conditions, at elevated temperature, or at reduced pressure. This allowed for the preparation of homogeneous films with a PbS content of up to ca. 65 wt. % PbS. It is also possible to prepare homogeneous solutions with PbS/gelatin ratios corresponding to higher PbS contents in the film; however, local phase separation occurs upon solvent evaporation if the PbS/gelatin ratio is too high. Moreover, the films manufactured by this simple solvent evaporation are not uniform (the film thickness decreases with increasing distance from the center of the film).

Another method for the preparation of polymer^{15,17–21} or polymer-dye²² films is spin coating. We found that homogeneous PbS–gelatin films can be created by spin coating with higher PbS content than is possible with the other methods investigated. Uniform films could be obtained when the substrate is initially covered with the PbS–gelatin solution over the entire area where the film is finally desired (here typically 10 cm²); upon spinning (100–4000 rpm), the area originally covered with solution yields an even film, while outside of this area stripes are formed. In this way, it was possible to produce

films with a PbS content of up to 86.4 wt. %. However, films with a PbS content below ca. 70 wt. % were of significantly better quality than those containing more PbS. The films show the brown color of colloidal PbS.

The viscosity of gelatin or gelatin–PbS solutions can be controlled by the concentration and the age of the solution, i.e., the degree of gelation. Good conditions for spin coating were found for a gelation time of 1 h.

Depending on the thickness and PbS content, a portion of light passes through the films, and this light is not scattered as far as can be judged by the eye. It has been suggested that the refractive index of the two components must be closely matched, in nanocomposites, to avoid cloudiness.^{1,2} Our result on PbS-polymer nanocomposites agrees with Mahler's conclusion^{4,5} that this aspect seems to be of little importance, provided that the particle size as well as the interparticle distances are much smaller than the wavelength of light. The absorption spectrum of the PbS films corresponds to that of colloidal PbS with a particle diameter of ca. 5–20 nm.²³

Thermogravimetry (TGA) of a film with a PbS content of 66.6 wt. % shows that the thermal stability of the composite is comparable with that of "native" gelatin alone.

For film thickness measurements, a small part in the interior of the film area was removed mechanically with a spatula, and the difference between substrate and film level was measured by surface profilometry.¹⁷ An example of such a profile is displayed in Fig. 1. The film thickness as a function of rotation rate was investigated for a pure gelatin (20 g/l) and a PbS–gelatin solution (concentration of gelatin 10 g/l and of PbS 8.2 g/l, corresponding to a lead sulfide content in the film of 45 wt. %). By varying the rotation rate from 300 to 2000 rpm, the film thickness decreases from ca. 10 μm to ca. 200 nm for the pure gelatin solutions (Fig. 2); varying the rotation rate from 200 to 3000 rpm decreases the film thickness from ca. 1 μm to ca. 40 nm when PbS is present (Fig. 2). It is obvious that the addition of PbS reduces the film thickness. It has been reported that

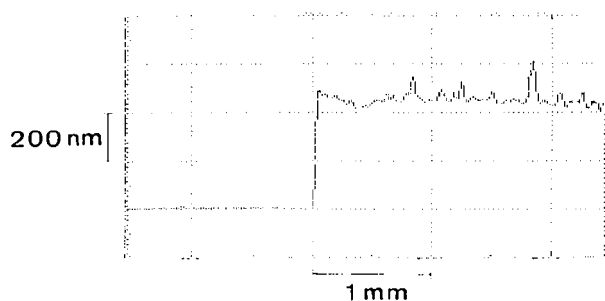


FIG. 1. Step height profile indicating the film thickness for a spin-coated PbS–gelatin nanocomposite containing 45 wt. % PbS.

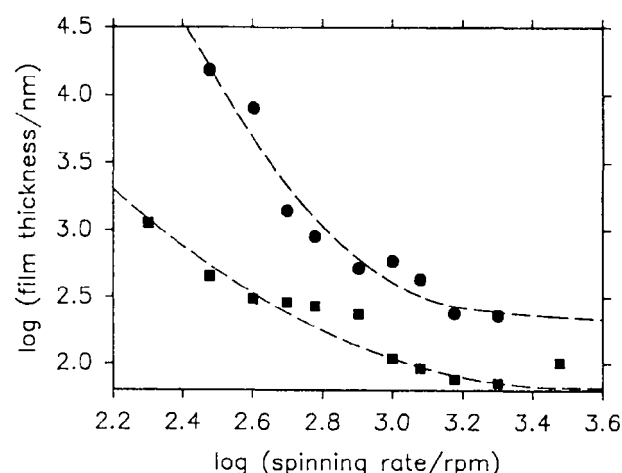
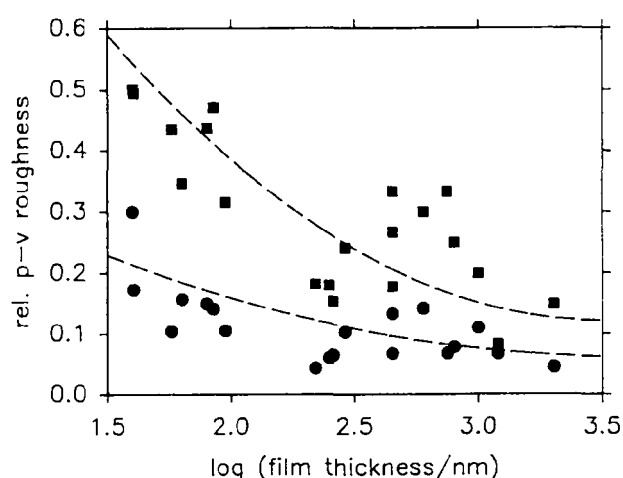


FIG. 2. Film thickness of spin-coated films as a function of the decadic logarithm of the spinning rate (dashed lines are drawn arbitrarily). (●): gelatin and (■): PbS-gelatin nanocomposite containing 45 wt. % PbS. Dashed lines are arbitrary.

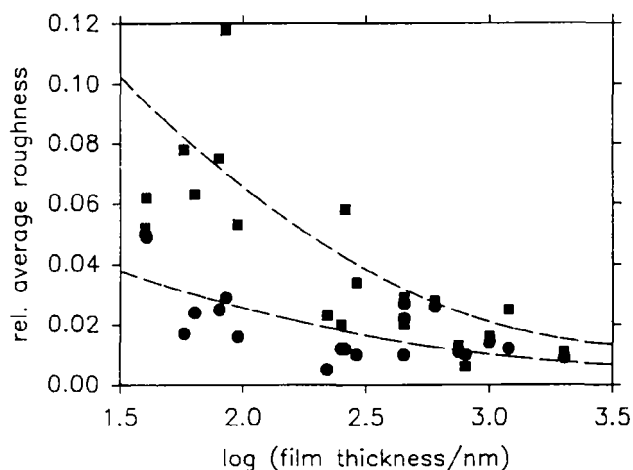
double-logarithmic plots yield a straight line relationship between film thickness and rotation rate for polymers¹⁷ and polymer-dye films,²² but other reports disagree.¹⁵ The films described here do not disclose such a linear dependence (Fig. 2).

The surface roughness of the above films was analyzed by surface profilometry for a film with 45 wt. % PbS. The ratio of surface roughness and film thickness (relative roughness) gives information on the film quality. In the following, the "average roughness" is defined as the average deviation from the mean film level, and the "peak-to-valley roughness" as half the difference between the highest and the lowest detected vertical point. Both types of relative surface roughnesses are displayed over a distance of 80 μm and 5 mm in Figs. 3(a) and 3(b). By necessity, the relative peak-to-valley roughness is larger than the relative average roughness. The relative roughnesses measured over longer distances are larger than those for shorter distances, indicating that there is roughness on a characteristic wavelength on the order of the smaller scanning distance or larger. The relative average roughness does not exceed 0.08, and the relative peak-to-valley roughness is below 0.5. Therefore, no spots were detected on which the substrate is not covered by film.

No significant difference could be detected by scanning electron microscopy (SEM) before and after annealing. Pictures at different magnifications are displayed in Figs. 4(a)–4(c) (86.4 wt. % PbS). A stereo image [Fig. 4(b)] discloses a surface roughness, as evidenced already by surface profilometry. However, no microphase separation and no objects above ca. 100 nm are visible. It is not known from these pictures whether the small, often spherical, particles are single PbS



(a)



(b)

FIG. 3. Relative peak-to-valley (a) and average surface roughness (b) as a function of log film thickness (dashed lines are drawn arbitrarily) of PbS-gelatin nanocomposites containing 45 wt. % PbS measured over a horizontal distance of 5 mm (■) and 80 μm (●).

particles, possibly enveloped by gelatin, or whether these objects are aggregates of smaller particles.

No evidence for large-scale heterogeneities was observed by transmission electron microscopy (TEM). Figure 4(d) shows a micrograph of a nanocomposite with 68 wt. % PbS after heat treatment. The bright stripes on both sides of the film cross section represent the embedding material (see Sec. II). Particles with typical dimensions of 2–5 nm were detected. The particles are crystalline by electron diffraction, and the diffraction pattern agrees with a reference of crystalline PbS.

B. Refractive indices

The refractive index at 632.8 nm was measured before and after annealing of the films (at 164 °C and

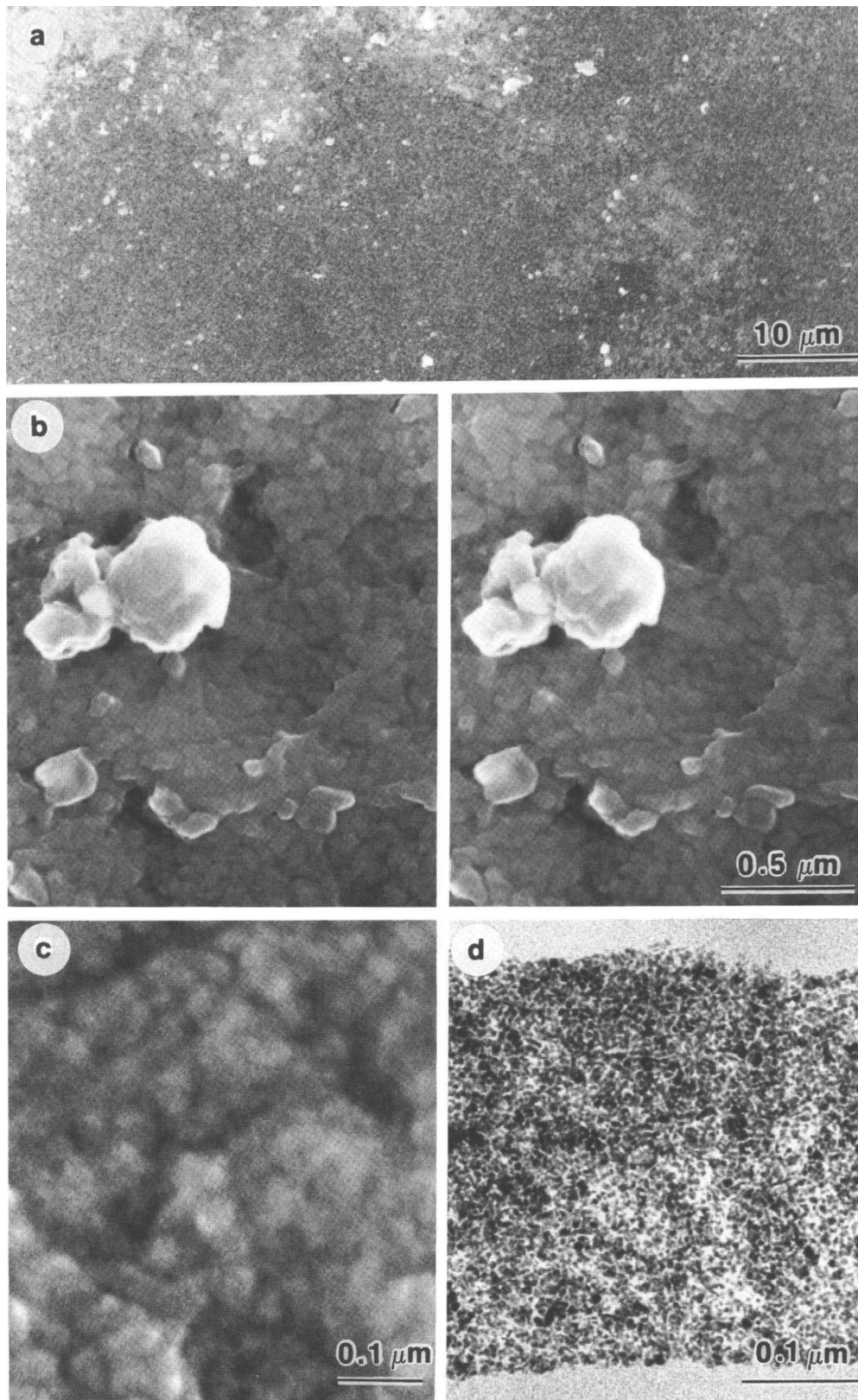


FIG. 4. Electron micrographs of spin-coated PbS-gelatin films. (a)–(c) SEM micrographs of a film containing 86.4 wt.% PbS (the white elevation in the stereo micrograph (b) is not representative of the film, but it helps in getting the stereo impression when it is fixed) and (d) TEM micrograph of a film containing 68 wt.% PbS.

100 Torr for 2 h). The refractive index of films containing 30–86 wt. % PbS lies in the interval of 1.55–2.50, increasing with increasing PbS fraction. It increases upon annealing by ca. 0.02–0.18, or ca. 1–8%, and the scattering of the refractive index measurements becomes smaller upon annealing. Although the highest absolute and relative enhancements upon annealing are preferentially found for high PbS loadings (>65 wt. % PbS), there is no systematic trend observable. The water content is similar before and after annealing. Thus, if the films lost water during the annealing procedure, they would take on about the same amount again after cooling and exposing to the atmosphere. However, measurements of thickness and surface roughness reveal that the films shrink typically by 5–8%, while the average surface roughness decreases typically by 10–20%, measured over a horizontal distance of 5 mm. Thickness variation upon annealing has also been reported for spin-coated polymer films.²⁰ Thus, it seems that the spin-coating process leads to a “frozen-in” film structure. The driving force for the film shrinking might be a rearrangement of the morphology of gelatin (changing the density and, hence, the refractive index of gelatin) or a disappearance of small holes (increasing the volume fraction of the solid components) upon annealing. It seems less likely that the PbS particles change upon annealing.

The refractive index of annealed films as a function of the PbS–gelatin weight and volume ratio is shown in Figs. 5 and 6. The volume ratios were calculated from the weight ratios using densities of $\rho_G = 1.35 \text{ g/cm}^3$ for gelatin²⁴ and $\rho_{\text{PbS}} = 7.5 \text{ g/cm}^3$ for PbS.²⁵ The refractive index appears to depend roughly linearly on the PbS volume fraction. Corresponding curves, based on a fitting of the equation,

$$n = \phi_{\text{PbS}} n_{\text{PbS}} + (1 - \phi_{\text{PbS}}) n_G, \quad (1)$$

are also drawn in Figs. 5 and 6, where n is the measured refractive index of the nanocomposite, n_G is the refractive index of gelatin (to be calculated by the regression analysis), n_{PbS} is the refractive index of the PbS colloid (to be calculated by the regression analysis), and ϕ_{PbS} is the volume fraction of PbS colloid. When plotted against weight fraction PbS, w_{PbS} , the line becomes, of course, a curve of shape,

$$n = \frac{\rho_{\text{PbS}} n_G - w_{\text{PbS}} (\rho_{\text{PbS}} n_G - \rho_G n_{\text{PbS}})}{\rho_{\text{PbS}} - w_{\text{PbS}} (\rho_{\text{PbS}} - \rho_G)}. \quad (2)$$

The error limits of the single refractive index values are typically ± 0.01 to ± 0.05 (95% confidence level) for films with a PbS content below ca. 70 wt. %, where the refractive index is ca. 2. Above 70 wt. % PbS, the error limits increase significantly, due to the difficulties in the preparation of the related films. For

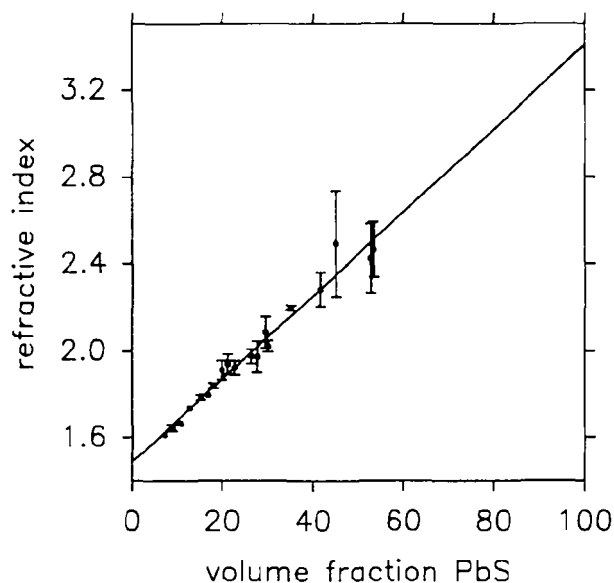


FIG. 5. Refractive index of PbS–gelatin nanocomposites as a function of weight fractions of PbS. Error bars are related to a 95% confidence level (visible only for deviations larger than the symbol dimensions). The straight line represents a best-fitting Eq. (1) in the text.

instance, the highest refractive index measured was 2.492 ± 0.244 (82.0 wt. % PbS), followed by 2.465 ± 0.128 (86.4 wt. % PbS).

The regression analysis leads to a value of 1.49 ± 0.05 (95% confidence level) for the extrapolation to 0 vol. % PbS and of 3.4 ± 0.1 (95% confidence level) for 100 vol. % PbS. These values should correspond

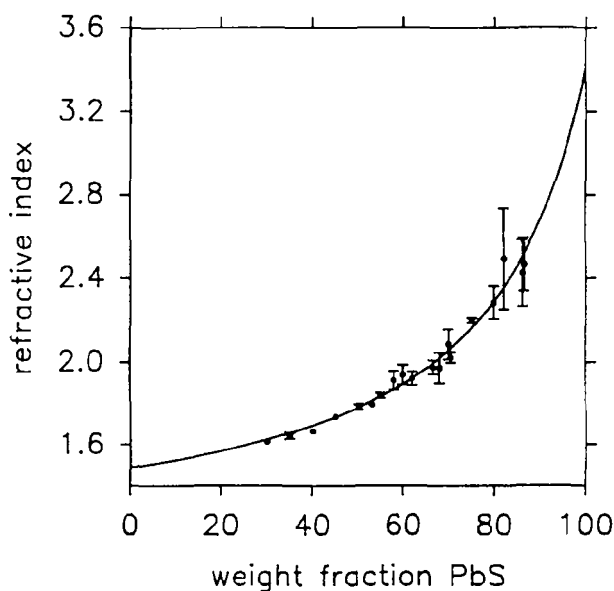


FIG. 6. Refractive index of PbS–gelatin nanocomposites as a function of volume fractions of PbS. Error bars are related to a 95% confidence level (visible only for deviations larger than the symbol dimensions). The solid line represents a best-fitting Eq. (2) in the text.

to the refractive index of "native" gelatin and of colloidal PbS. Indeed, the refractive index for "native" gelatin films is 1.537 ± 0.008 (95% confidence level), in good agreement with the literature (1.54^{24}), while the refractive index of colloidal PbS is not known, to our knowledge. The refractive index for PbS single crystals is ca. 4.3 at 632.8 nm.¹³ The difference between the refractive index of PbS single crystals and the value obtained by linear regression can hardly be explained by an error in the density used for the calculation of the volume fractions, since a change in the densities of $\pm 20\%$ would not change the results significantly. The difference could be interpreted by other effects. The particles might be partially amorphous (see above) and therefore exhibit a refractive index different from that of crystalline PbS, the refractive index could be lower for particles with very small size,^{23,26,27} the dependence of the refractive index from the PbS volume fraction might become nonlinear for high PbS volume fractions, and the value could be anything greater than 3.2. Also, the particles might be "corroded", e.g., oxidized to PbSO₄, at the surface (however, it has been reported that PbS-polymer nanocomposites are extremely stable at room temperature⁴).

In SiO₂-poly(methylmethacrylate) (SiO₂-PMMA) composites, the refractive index depends linearly on the inorganic volume fraction up to 60%.^{1,2} According to the refractive index of pure SiO₂, probably measured with SiO₂ of larger dimensions, a nonlinear volume fraction dependence is expected by those authors at higher volume fractions.^{1,2} However, the possible effect of a particle size dependence on the refractive index is not mentioned. There are no experimental data at sufficiently high volume fractions for a safe illustration of a nonlinear volume fraction dependence at volume fractions.

ACKNOWLEDGMENTS

We would like to thank Dr. Paul Walther, Laboratorium für Elektronenmikroskopie I of the ETH-Zürich, for assistance in taking electron micrographs, and the Swiss "Nationales Forschungsprogramm 19" for financial support.

REFERENCES

1. E. J. A. Pope, M. Asami, and J. D. Mackenzie, *J. Mater. Res.* **4**, 1018 (1989).
2. E. J. A. Pope, M. Asami, and J. D. Mackenzie, in *Multicomponent Ultrafine Microstructures*, edited by L. E. McCandlish, D. E. Polk, R. W. Siegel, and G. H. Kear (Mater. Res. Soc. Symp. Proc. **132**, Pittsburgh, PA, 1989), p. 105.
3. P. N. Dunlap and S. E. Howe, *Polym. Compos.* **12**, 39 (1991).
4. W. Mahler, U.S. Patent 4 738 798 (1988).
5. W. Mahler, *Inorg. Chem.* **27**, 435 (1988).
6. Y. Wang, A. Suna, and W. Mahler, in *Nonlinear Optical Properties of Polymers*, edited by A. J. Heeger, J. Orenstein, and D. R. Ulrich (Mater. Res. Soc. Symp. Proc. **109**, Pittsburgh, PA, 1988), p. 187.
7. M. Weibel, W. Caseri, U. W. Suter, H. Kiess, and E. Wehrli, *Polym. Adv. Technol.* **2**, 75 (1991).
8. *Polymer Handbook*, edited by J. Brandrup and E. H. Immergut (John Wiley and Sons, New York, 1989).
9. T. Sugiyama, T. Wada, and H. Sasabe, *Synthet. Met.* **28**, C323 (1989).
10. H.-U. Simmrock, A. Mathy, L. Dominguez, W. H. Meyer, and G. Wegner, *Adv. Mater.* **1**, 294 (1989).
11. R. A. Gaudiana and R. A. Minns, *J. Macromol. Sci. A* **28**, 831 (1991).
12. H. G. Rogers, R. A. Gaudiana, W. C. Hollinsed, P. S. Kalyanaraman, J. S. Manello, C. McGowan, R. A. Minns, and R. Sahatjian, *Macromolecules* **18**, 1058 (1985).
13. *Handbook of Optical Constants of Solids*, edited by E. D. Palik (Academic Press, Orlando, FL, 1985).
14. W. H. Westphal, *Physik* (Springer, Berlin, 1963), p. 507.
15. A. Weill, *Springer Proc. Phys.* **13**, 51 (1986).
16. J. H. Luft, *J. Biophys. Biochem. Cytol.* **9**, 409 (1961).
17. K. J. Skrobis, D. D. Denton, and A. V. Skrobis, *Polym. Eng. Sci.* **30**, 193 (1990).
18. B. Reisfeld, S. G. Bankoff, and S. H. Davis, *J. Appl. Phys.* **70**, 5258 (1991).
19. B. Reisfeld, S. G. Bankoff, and S. H. Davis, *J. Appl. Phys.* **70**, 5267 (1991).
20. J. Russat, *Surf. Interface Anal.* **11**, 414 (1988).
21. L. M. Peurrung and D. B. Graves, *J. Electrochem. Soc.* **138**, 2115 (1991).
22. K.-Y. Law, *Polymer* **23**, 1627 (1982).
23. A. J. Nozik, F. Williams, M. T. Nenadović, T. Rajh, and O. I. Mičić, *J. Phys. Chem.* **89**, 397 (1985).
24. *Encyclopedia of Polymer Science and Engineering*, edited by H. F. Mark, N. M. Bikales, C. G. Overberger, G. Menges, and J. I. Kroschwitz (John Wiley and Sons, New York, 1987), Vol. 7.
25. *Handbook of Chemistry and Physics*, edited by R. C. Weast (CRC Press, Boca Raton, FL, 1985).
26. R. Rossetti, R. Hull, J. M. Gibson, and L. E. Brus, *J. Chem. Phys.* **83**, 1406 (1985).
27. Y. Wang and N. Herron, *J. Phys. Chem.* **91**, 257 (1987).