


8.2012

N° 427

WORKING PAPERS SES



Smile in Motion: An Intraday Analysis of Asymmetric Implied Volatility

■ Martin Wallmeier

FACULTÉ DES SCIENCES ÉCONOMIQUES ET SOCIALES
WIRTSCHAFTS- UND SOZIALWISSENSCHAFTLICHE FAKULTÄT
UNIVERSITÉ DE FRIBOURG | UNIVERSITÄT FREIBURG

Smile in Motion: An Intraday Analysis of Asymmetric Implied Volatility

Martin Wallmeier*

August 2012

Abstract

We present a new method to measure the intraday relationship between movements of implied volatility smiles and stock returns. It is based on an enhanced smile regression model which captures patterns in the intraday data which have not yet been reported in the literature. Using transaction data for exchange-traded EuroStoxx 50 options from 2000 to 2011 and DAX options from 1995 to 2011, we show that, *on average*, about 99% of the intraday variation of implied volatility can be explained by moneyness and changes in the index level. Compared to the typical smile regression with moneyness alone, about 50% of the remaining errors can be attributed to movements in the underlying index. We find that the intraday evolution of volatility smiles is generally not consistent with traders' rules of thumb such as the sticky strike or sticky delta rule. On average, the impact of index return on implied volatility is 1.3 to 1.5 times stronger than the sticky strike rule predicts. The main factor driving variations of this adjustment factor is the index return. Our results have implications for option valuation, hedging and the understanding of the leverage effect.

JEL classification: G11; G14; G24

Keywords: Volatility smile, implied volatility, leverage effect, index options, high-frequency data.

*Prof. Dr. Martin Wallmeier, Department of Finance and Accounting, University of Fribourg / Switzerland, Bd. de Pérolles 90, CH-1700 Fribourg, martin.wallmeier@unifr.ch

1 Introduction

When studying options with different strike prices, it is common practice to translate option prices into implied volatilities. The strike price structure of implied volatilities directly reveals deviations from the flat line prediction of the Black-Scholes model. The patterns typically found in option markets are subsumed under the term “smile”, because they often show an increase in implied volatility for high and low strike prices. For stock index options, implied volatility tends to decrease monotonically with strike price, which is why the pattern is better known as a “skew”. In line with a part of the literature, we use “smile” as a general term for the strike price profile of implied volatility, which also includes a skew pattern.

Figure 1A (p. 3) shows a typical scatterplot of implied volatility against moneyness, where moneyness is defined as a scaled ratio of strike price and underlying index value. Each point represents a transaction on 21st January 2009 in DAX options with a time to maturity of 30 days. Clearly, there is a pronounced skew, with moneyness explaining much of the variation of implied volatility, which is consistent with the findings of many previous studies. But to the best of our knowledge, the literature so far has not paid attention to a secondary pattern which is apparent from the same graph when plotting neighboring strike prices in different grey shades (see Fig. 1B). Contrary to the overall downward sloping skew profile, when the strike price is fixed, implied volatilities tend to *increase* with moneyness. Since the strike price is held constant, the corresponding moneyness variation is caused by index changes alone. When the index falls (moneyness goes up), implied volatility typically increases, and vice versa. The whole smile structure appears to move systematically in relation to index changes. The main idea of this paper is to exploit these intraday movements to construct daily measures of the index-volatility relationship. We apply these measures to options on the EuroStoxx 50 and the German DAX index, which both belong to the most actively traded stock index options in the world.¹ Our

¹ See the Trading Volume Statistics of the Futures Industry Association (<http://www.futuresindustry.org>).

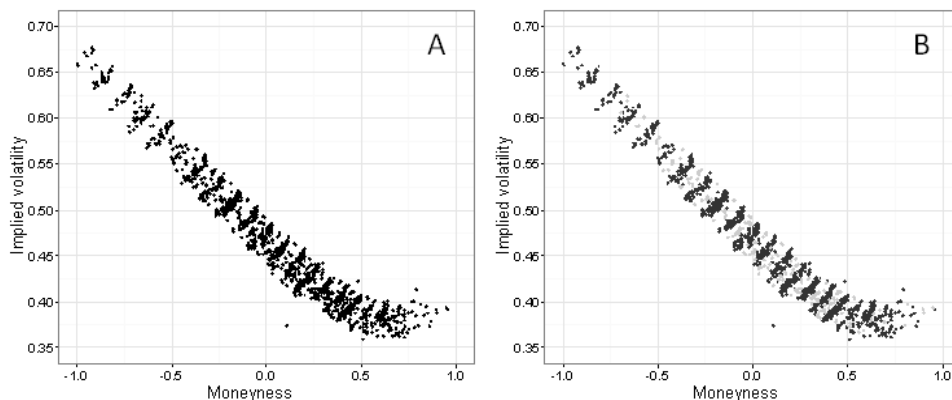


Figure 1: Smile profile of the DAX option with a time to maturity of 30 calendar days on 21st September 2009. Left: all trades in black. Right: different grey shades for neighboring strikes.

study includes 4.6 million transactions of EuroStoxx 50 options over the period from 2000 to 2011 and 9.3 million transactions of DAX options between 1995 and 2011.

The first objective of our study is to model the smile more precisely than has previously been achieved. Using simulations, Hentschel (2003) shows that the impact of estimation errors is potentially large. Our approach is to reduce estimation errors to such an extent that they are no longer practically relevant. To this end, we perfectly synchronize index levels and option prices and make use of put call parity to obtain an implicit market estimate of expected dividends including tax effects.² In a simple smile regression, we obtain an *average* daily R^2 of about 96%, which is considerably higher than reported in other studies (see, e.g., Goncalves and Guidolin (2006), p. 1600; Kim (2009), p. 1010). Violations of arbitrage relations (upper and lower bounds, butterfly spread) are practically non-existent. We conclude that it is important and possible to avoid errors in estimating implied volatilities. Results based on imperfectly matched closing prices might not be reliable.

The second objective is to extend the commonly applied smile model to capture the

² This is not standard practice in the literature. For instance, Christoffersen et al. (2009) use only call options, rely on closing prices and adjust the underlying index level for ex post realized dividends instead of expected dividends. For the 1997–2006 period, Constantinides et al. (2009) also use call options only.

secondary pattern related to intraday index changes. The inclusion of the index level as an explanatory variable in our enhanced smile model raises the *average* daily R^2 to about 99%. Thus, almost all of the variation of implied volatility across transactions in one option series on one day can be explained by moneyness and index return. This means that option pricing follows a strict rule established as a market standard. The high explanatory power of the smile model seems to be a new result.

The third objective of our study is to provide empirical estimates of the relation between index returns and implied volatilities based on our enhanced smile model. The regression analysis allows us to study the arising of the well-known leverage or asymmetric volatility effect based on high-frequency data. One advantage of our approach is that high-frequency changes of *implied* volatilities can be measured with greater precision than high-frequency changes of *realized* volatility. Another advantage is that our estimate is based on all option trades on one day which allows us to accurately disentangle the effects of moneyness and index level on implied volatilities. In line with studies based on daily changes, we find that, during the day, the smile moves upwards when the index falls and vice versa. However, in contrast to previous literature, we find none of the three commonly proposed traders' rules of thumb (sticky moneyness, sticky strike, sticky implied tree) to be valid in any extended time period. One main result is that the intraday movements are, on average, about 1.3 times as strong as the sticky strike rule predicts. However, the adjustment factor is strongly associated with the index return on the same day. During days when the index gains more than 3% between open and close, the shifts of the smile are approximately consistent with the sticky strike rule (factor 1.0), while on days with negative returns of less than -3% , the changes of the smile tend to be 1.8 times stronger. These findings are remarkably stable over time and across time to maturity classes. They are relevant for hedging index options, testing option pricing models and modeling and trading volatility (see Gatheral and Kamal (2010), 930).

Our study is related to three streams of literature. The first deals with the dynamics of the surface of implied volatilities. The surface is typically estimated on a daily basis using

parametric or non-parametric methods. In the parametric approach, which goes back to Shimko (1993), implied volatilities are modeled by polynomial functions of moneyness and time to maturity. Non-parametric methods include kernel regressions (e.g. Fengler (2005)) and grouping techniques (e.g. Pena et al. (1999)). The dynamics of implied volatilities is then analyzed by Principal Components Analysis (PCA) or related methods.³ Several studies show that a small number of two to four factors explains much of the daily variation of the smile surface. These factors are related to shocks to (1) the overall level of the smile, (2) its steepness, (3) curvature and (4) the term structure of implied volatilities (see Skiadopoulos et al. (1999), Cont and Fonseca (2002), Hafner (2004), Fengler et al. (2003), Fengler et al. (2007)). The studies also find that the level-related factor has a strongly negative correlation to the return of the underlying index. Goncalves and Guidolin (2006) take a more direct approach than PCA by using VAR models for the parameters of polynomial smile regressions. They find that the movements of the surface are highly predictable, but it remains an open question if this predictability can be exploited by profitable trading strategies.

The negative return-volatility correlation, which is at the heart of the second stream of literature, is as strong as about -0.6 to -0.8 in daily data, which is why it is regarded as an important stylized fact (see, e.g., Christoffersen (2012), p. 11). It is often called asymmetric volatility or leverage effect, because a decrease of stock prices brings about higher leverage ratios and therefore higher equity risk. However, this leverage argument is insufficient to explain the size of the observed correlation (see Figlewski and Wang (2000)). Recent evidence from high-frequency data suggests that the relation is initiated by index return followed by a volatility reaction (see Masset and Wallmeier (2010)), but the economic causes of the effect are still questionable. In line with other studies, we still use the term “leverage effect” although the leverage argument cannot fully account for the effect.

³ Schönbucher (1999) and Ledoit et al. (2002) derive conditions for the dynamics of implied volatilities to be consistent with arbitrage-free markets.

The third stream of literature considers the asymmetric volatility reaction from a trader's point of view. Traders need to know the return-volatility relation for hedging plain-vanilla options and pricing and hedging exotic options. They often rely on rules of thumb instead of sophisticated but possibly less robust theoretical models.⁴ Derman (1999) analyzes three rules of thumb known as “sticky moneyness”, “sticky strike” and “sticky implied tree”. The first two rules suggest that implied volatility remains constant for given moneyness or given strike. The third rule assumes that there is a deterministic relation between asset price and local volatility, so that volatility is not a risk factor of its own. This is why the familiar binomial and trinomial trees can be modified to reflect the node-dependent local volatility. However, empirical studies do not support the deterministic volatility approach (see Dumas et al. (1998)). It implies exaggerated shifts of the smile profile when the asset price changes. Ultimately, the return-volatility relation is overstrained if it is considered as the sole cause of the observed skew. Nevertheless, Crépey (2004) concludes from numerical and empirical tests that, in negatively skewed equity index markets, the mean hedging performance of the model is better than the Black-Scholes implied delta. Thus, the local volatility model might be useful in practice despite its known weaknesses. The results for the other rules of thumb are mixed. For a one year time period, Derman (1999) identifies seven different regimes in which different rules prevail. Daghli et al. (2007) analyze monthly S&P500 option data from 1998 to 2002 and find support for the sticky moneyness rule in a relative form, which means that the excess of implied volatility over the ATM level is a function of moneyness. Gatheral and Kamal (2010) report that the ATM implied volatility of S&P500 options reacts 1.5 times stronger than expected according to the sticky strike rule. This estimate reflects the average relationship from daily data over a time period of eight years.

Compared to these studies, our main contribution is to propose a new estimation method for the index-implied volatility relationship based on intraday data. In this way, the time

⁴ Kim (2009) provides empirical support for the superiority of traders' rules over sophisticated models in forecasting the smile structure.

variation of the asymmetric volatility effect can be studied. All daily option trades are included in the estimation, which allows us to accurately separate movements along the smile from shifts of the smile pattern. The rest of the paper is structured as follows. Section 2 describes our data and the matching of index and option prices. Section 3 presents our enhanced smile model and Section 4 the results of its empirical estimation. Section 5 concludes.

2 Data

We analyze options on the European stock index EuroStoxx 50 (OESX) and on the German stock index DAX (ODAX). They are traded at the Eurex and belong to the most liquid index options in the world.⁵ The options are European style. At any point in time during the sample period, at least eight option maturities were available. However, trading is heavily concentrated on the nearby maturities. Trading hours changed several times during our sample period, but both products were traded at least from 09:30 to 16:00. Our sample period extends from 1995 to 2011 for DAX options and from 2000 to 2011 for ESX options (which were launched in 2000).

For this study of intraday smile movements, it is crucially important to measure implied volatilities with great precision. Hentschel (2003, p. 788) describes the main sources of measurement error as follows: “For the index level, a large error typically comes from using closing prices for the options and index that are measured 15 minutes apart. This time difference can be reduced by using transaction prices, but such careful alignment of prices is not typical. Even when option prices and published index levels are perfectly synchronous, large indexes often contain stale component prices.” We address these concerns in the following ways. To overcome stale prices in the index, we derive the appropriate index level from transaction prices of the corresponding index future, which is the most common index trading instrument. We match each option trade with the previous future trade and

⁵ We are very grateful to the Eurex for providing the data.

require that the time difference does not exceed 30 seconds. In fact, the median time span between matched future and option trades in 2011 is 240 milliseconds. Even with perfect matching, the index level might still be flawed since it is not adjusted for dividends during the option's lifetime. This is particularly relevant for the ESX which is a price index, while the DAX is a performance index.⁶ The necessary adjustment is not straightforward since dividend expectations of option traders are not directly observable. Instead, following Han (2008) and, for the German market, Hafner and Wallmeier (2001), we use put-call parity to derive a market estimate of the appropriate index adjustment. Put-call parity is directly applicable because our index options are of European type and transaction costs are small.

Our procedure to measure implied volatilities can be summarized as follows. To obtain the index level S_{mt} corresponding to an observed futures market price F_{mt} at time m on day t , we solve the futures pricing model $F_{mt} = S_{mt}e^{r(T-t)}$ for S_{mt} , where r is the risk-free rate of return and T the futures contract maturity date. We only consider the contract most actively traded on that day, which is normally the nearest available. The futures implied index level S_{mt} is then adjusted such that transaction prices of pairs of at-the-money (ATM) puts and calls traded within 30 seconds are consistent with put-call-parity. The adjusted index level is $S_{mt}^{adj} = S_{mt} + A_t$, where A_t is the same adjustment value for all index levels observed intraday. Empirically, the adjustment is usually negligible with the exception of short-term ESX options traded in March (after the third Friday) and April. The reason is that for these options, the maturity months (April and May) are different from the next maturity date of the future (June). Between the two maturity dates, most ESX firms pay out dividends, which are therefore considered differently in options and futures prices.

⁶ An adjustment might still be relevant for DAX options, because the assumption about taxation of dividends underlying computation of the index does not necessarily correspond to the actual taxation of marginal investors; see Hafner and Wallmeier (2001).

3 Estimation method

In line with Natenberg (1994) and Goncalves and Guidolin (2006), among others, we define time to maturity adjusted moneyness as:

$$M(m, t, T, X) = \frac{\ln\left(\frac{Xe^{-r(T-t)}}{S_{mt}^{adj}}\right)}{\sqrt{T-t}},$$

where m is the intraday time (down to the level of seconds), t denotes the trading day, T is the option's maturity date and X the exercise price. The typical smile regression based on transaction data considers all trades on one day in options with different strike prices but the same time to maturity. Figure 2 shows typical scatterplots of implied volatility across moneyness for different times to maturity (trading date 14th December 2011).

— *Insert Figure 2 (p. 25) about here.* —

A common way to model these patterns is to use the cubic regression function:

$$IV(M) = \beta_0 + \beta_1 M + \beta_2 M^2 + \beta_3 D \cdot M^3 + \varepsilon, \quad (1)$$

where IV is the implied volatility, β_i , $i = 0, 1, 2, 3$ are regression coefficients, ε is a random error, and D a dummy variable defined as:

$$D = \begin{cases} 0 & , \quad M \leq 0 \\ 1 & , \quad M > 0 \end{cases}.$$

The dummy variable accounts for an asymmetry of the pattern of implied volatilities around the ATM strike ($M = 0$). The cubic smile function is twice differentiable so that the corresponding risk-neutral probability density is smooth.

A weakness of regression model (1) is the underlying assumption that the smile pattern is constant during each trading day. By contrast, empirical observations suggest that implied

volatilities change in accordance with intraday index returns (see Fig. 1). Therefore, we propose an enhanced regression model which considers the index level as an additional determinant of implied volatilities. The new regression function is:

$$IV(M, S) = \beta_0 + \beta_1 M + \beta_2 M^2 + \beta_3 D \cdot M^3 + \gamma \ln S + \delta M \ln S + \varepsilon, \quad (2)$$

where S is the short-form of S_{mt}^{adj} . For $\delta = 0$, this model implies parallel shifts of the smile pattern in response to changes in the index level. The interaction term with moneyness is included to also allow for twists of the smile pattern ($\delta \neq 0$). Figure 3B shows the fitted regression function for the previous example of Figure 1. On this day (21st January 2009), the index varied between 4140 and 4310. For a given strike price, index changes are directly reflected in inverse moneyness changes. These, in turn, are systematically related to changes in implied volatilities, as can be seen from the positive relation of implied volatilities and moneyness for constant X (Fig. 3A). This structure overlying the general smile pattern is well captured in the enhanced smile model (Fig. 3B).

— *Insert Figure 3 (p. 26) about here.* —

Based on Eq. (2), an “average” daily smile can be defined as:

$$IV^*(M) = IV(M, \bar{S}) = \beta_0^* + \beta_1^* M + \beta_2 M^2 + \beta_3 D \cdot M^3 + \varepsilon \quad (3)$$

where \bar{S} denotes the average of maximal and minimal intraday index level, and β_0^* and β_1^* are defined as $\beta_0^* = \beta_0 + \gamma \ln \bar{S}$ and $\beta_1^* = \beta_1 + \delta \ln \bar{S}$. We expect function $IV^*(M)$ according to Eq. (3) to be almost identical to $IV(M)$ according to Eq. (1).

Based on the enhanced regression model (2), we propose two simple measures for the index dependency of the smile. The first measure is defined as the partial derivative of ATM implied volatility with respect to the log index level and is therefore equal to the

coefficient γ :

$$\gamma = \frac{\partial IV(0, S)}{\partial \ln S}. \quad (4)$$

A γ -coefficient of 1 means that ATM volatility decreases by one percentage point when the log index rises by one percent. The second measure is closely related to well known traders' rules of thumb for the smile dynamics. Following Gatheral and Kamal (2010), this measure is the parameter c so that the following relation holds:

$$\frac{dIV}{dS}(0, \bar{S}) \cdot \frac{1}{dM(\bar{S})/dS} = (1 - c) \frac{\partial IV(0, \bar{S})}{\partial M}. \quad (5)$$

The left hand side of Eq. (5) describes the total change of the implied volatility of an ATM option per unit of change in moneyness, where the changes in moneyness and implied volatility are induced by index return. The right hand side relates this change in implied volatility to the change we would observe with a constant smile pattern. Under the assumption of a constant smile, we would just have to update moneyness in accordance with index changes and read off the new implied volatility from the initial smile function (“sticky moneyness”). The smile dynamics corresponds to this sticky moneyness rule if $c = 0$. In case of $c = 1$, the index-induced change in implied volatility of an option is zero, which corresponds to the “sticky strike” rule. As a third rule of thumb, Derman (1999) introduced the “sticky implied tree” rule which is characterized by an inverse movement of implied volatilities compared to “sticky moneyness”. In our formulation, the sticky implied tree rule approximately corresponds to $c = 2$.

Inserting the derivatives

$$\begin{aligned} \frac{dIV(0, S)}{dS} &= \frac{1}{S} \left(\gamma - \frac{\beta_1 + \delta \ln S}{\sqrt{T-t}} \right) \\ \frac{dM(S)}{dS} &= -\frac{1}{S\sqrt{T-t}} \\ \frac{\partial IV(0, S)}{\partial M} &= \beta_1 + \delta \ln S \end{aligned}$$

into Eq. (5) and solving for c , we obtain:

$$c = \frac{\gamma}{\beta_1 + \delta \ln \bar{S}} \sqrt{T - t}. \quad (6)$$

Thus, the second measure of the intraday leverage effect, c , expresses the coefficient γ as a multiple of the slope of the smile function. In case of $c = 1$, the parallel shift of the smile function just offsets the effect of “riding” on the initial smile function (sticky strike). The sticky implied tree rule postulates that the parallel shift more than offsets the effect of a movement along the smile, while sticky moneyness implies that shifts of the smile are non-existent. Therefore, our enhanced smile regression model provides the opportunity to test these rules of thumb on a daily basis.

The error terms in Eq. (1) and (2) are supposed to be heteroscedastic, because the sensitivity of the implied volatility estimates with respect to the index level is larger for deep in-the-money options. Therefore, we apply a weighted least squares (WLS) estimation assuming that the error variance is proportional to the (positive) ratio of the option’s delta and vega.⁷ This ratio indicates how a small increase in the index level affects the implied volatility. We note that the impact of the WLS estimation (as opposed to OLS) is negligible in all but very few cases. We exclude an observation as outlier if the absolute value of the regression residual exceeds five standard deviations of the residuals. Such outliers can be due to mistrades which are unwound but still contained in the database. Less than 0.3% of all observations are identified as outliers according to the 5-sigma rule.

⁷ The delta and vega are computed using the implied volatility of the corresponding option. The delta of puts is multiplied by -1 to obtain a positive ratio.

4 Empirical results

4.1 Smile pattern over time

We classify options into three maturity groups. The last two weeks before the maturity date (which is a third Friday) are excluded to leave out expiration-day effects. The weeks 3 to 6, 7 to 10, and 11 to 14 before maturity each constitute one group, so that the time to maturity ranges from 14 to 39 days (TtM1), 42 to 67 days (TtM2), and 70 to 95 days (TtM3). The days in-between these intervals are Saturdays and Sundays. Options with longer maturities are not considered due to thin trading. Table 1 shows summary statistics for the estimated parameters of simple smile regressions (1) in Panel A and the enhanced regressions (3) in Panel B over the time period from January 2000 to December 2011. Results for ESX and DAX options are almost identical. The ATM implied volatility (β_0) is about 24% on average. The negative β_1 - and positive β_2 -coefficients reflect the typical skew pattern. The smile function is curved for the shortest maturity and almost linear for longer maturities. Note that differences of smile profiles across maturity classes depend on the definition of moneyness. The differences would be stronger when using a simple moneyness measure without maturity adjustment. The estimated coefficient β_3 is mostly positive, because implied volatility often increases near the upper boundary of available moneyness. In most cases, the highest moneyness actively traded lies between 0.5 and 1.0. Of course, the estimated regression function cannot necessarily be extrapolated beyond the range of traded moneyness. Panel B reveals that the β -parameters of the extended regression model are almost identical to those in Panel A. This is not surprising, because the inclusion of the index level as an additional explanatory variable does not modify the average moneyness profile of implied volatilities.

— *Insert Table 1 (p. 30) about here.* —

Figure 4 illustrates the evolution of the daily estimates of smile characteristics for ODAX

over the time period from January 1995 to December 2011. Graph 4A shows the ATM implied volatility, which corresponds to β_0^* in Eq. (2). Figures 4B and 4C show spreads between implied volatilities at different moneyness levels. The spreads are defined as:

$$\begin{aligned} Spread1 &= IV^*(M_1 = -0.3) - IV^*(M_0 = 0), \\ Spread2 &= IV^*(M_2 = 0.139) - IV^*(M_0 = 0). \end{aligned}$$

Levels $M_1 = -0.3$ and $M_2 = 0.139$ are chosen such that an option with a time to maturity of 45 days has a strike price of 90% or 105% of the index level.

— *Insert Figure 4 (p. 27) about here.* —

ATM in Graph 4A basically replicates the volatility index VDAX. The largest peaks are related to the Russian crisis in 1998, the September 2001 attack on the World Trade Center, the market turmoil of 2002, the Iraq war in 2003 and the subprime crisis with the bankruptcy of Lehman Brothers in September 2008. *Spread1* in Graph B is always positive and varies mostly between 2 and 8 percentage points. The fluctuations are significant and do not seem to be related to the overall level of the smile as measured by ATM. The spread appears to follow an upward trend during the sample period. *Spread2* (Graph C) is negative over the whole period, which means that the negatively sloped skew extends well beyond a moneyness of 0.

Figure 5 shows the same graphs for OESX over the shorter period since 2000. The main observations are the same as for ODAX.

— *Insert Figure 5 (p. 28) about here.* —

4.2 Intraday movements of the smile

We now turn to the empirical results on intraday movements of the smile in relation to intraday index changes. Our first measure of the index-smile relation, which is the γ -coefficient of the enhanced smile regression (2), is on average significantly negative (see Table 1, Panel B). Thus, the intraday index level turns out to be an important explanatory variable. For instance, the average γ for OESX options in the first maturity group is -0.7938 with a standard error of $0.4878/\sqrt{2694} = 0.0094$, which corresponds to a t -value of 84.5. The negative sign means that the smile shifts upwards when the index value decreases. The shift tends to be stronger the shorter the time to maturity. The estimated δ -coefficient for the interaction of moneyness and index level is negative on average, but in 5 of 6 cases (two options, three maturity classes) it is not significant. The adjusted R^2 -coefficients of the extended smile model are significantly higher than those of the simple smile model. On average, the adjusted R^2 is about 98% in the first moneyness class and 99% in the second and third classes. Therefore, the intraday index level explains about 50% of the variation of the remaining errors of the simple smile regression.

The c -coefficient as our second measure of the relation between index level and smile profile is about 1.3 on average (Table 1, Panel B). The mean value is significantly larger than 1 for ODAX and OESX in all maturity classes.

For a more detailed analysis, we split our sample into years and compute yearly averages of the γ - and c -coefficients. The results in Table 2 indicate that γ is always negative and c always greater than 1. Coefficient γ varies more strongly than c . One reason is that γ is positively related to the slope of the skew. Such a relation does not exist for the c -coefficient. Thus, the steeper the smile, the larger is the parallel shift of the smile with respect to changes in the index level. In a world with a constant smile, when the index level decreases, implied volatility falls along the initial smile pattern. To exactly offset this decrease of implied volatility, the shift in the smile pattern would need to be directly related to the slope of the skew. We find that the actual shift is typically about 1.3

times bigger. The yearly averages of the c -coefficients are remarkably stable across time to maturity classes and for the two options (ODAX, OESX).

— *Insert Table 2 (p. 31) about here.* —

Graphs D and F in Figures 4 and 5 show the *daily* estimates of γ and c . The estimates are noisy, which is not surprising given the fact that an accurate estimation is only possible if considerable index changes occur during the day. For the c -coefficient, trends or cyclical patterns do not seem to exist. The graphs confirm the finding that the mean value of c remains rather stable at a level of about 1.3. Thus, we conclude that none of the three traders' rules of thumb is consistent with empirical evidence for ESX and DAX options. The sticky moneyness rule is rejected by clear evidence of systematic, index related shifts of the smile pattern. The sticky strike rule, postulating a c -coefficient of 1, correctly captures the direction of index-related smile movements, but the empirically observed shifts are more pronounced. Conversely, the predictions of the implied tree rule are too extreme. As Dumas et al. (1998) and others have shown, the reason is that implied tree models assume a deterministic relation between volatility changes and asset returns. This negative relation is regarded as the sole cause of the skew in option prices. However, to explain the strong skew observed in index option markets in this way, the relation between volatility and return would have to be even stronger than it actually is.

4.3 Determinants of intraday movements

The last section revealed that the c -coefficient does not appear to follow a trend or cyclical pattern. Yet, it might be systematically related to other economic variables. One obvious candidate is the index return, because negative index returns are often found to have a stronger impact on volatility than positive returns.

We define daily log return as $r_t = \ln(S_{t,close}/S_{t,open})$, where $S_{t,close}$ and $S_{t,open}$ denote the index levels at closing and opening of option trading on day t . Days are grouped into

eight daily return (DR) groups. Group 1 includes all days with $r_t \leq -3\%$, Group 8 all days with $r_t > 3\%$. The groups in-between cover a return interval of one percentage point each, in ascending order. For example, Groups 4 and 5 are characterized by $-1\% < r_t \leq 0$ and $0 < r_t \leq 1\%$, respectively. As a second return variable, we define previous overnight return (OR) as $r_t^o = \ln(S_{t,open}/S_{t-1,close})$. We build four OR classes in ascending order with thresholds for r_t^o of -0.5%, 0%, and 0.5%. Thus, Group OR1 includes all days t with $r_t^o \leq -0.5\%$, Group MR4 all days t with $r_t^o > 0.5\%$. Sorting is done in one dimension, either by DR or OR, based on all days of the sample period (1995 to 2011 for ODAX and 2000 to 2011 for OESX).

— *Insert Table 3 (p. 32) about here.* —

For each DR and OR group, Table 3 shows the number of days, N , in this group and the average γ and c coefficients. We focus on coefficient c as it takes the slope of the smile into account. The results show a strongly negative relationship between c and the daily return DR. In line with expectations, c is generally higher for negative compared to positive returns. In the DR8 group ($r_t > 3\%$), smile movements are consistent with the sticky strike rule (c close to 1). For small absolute returns (DR4 and DR5), c corresponds to the sample average of about 1.3. In the DR1 and DR2 groups, the smile movements are stronger, with c -coefficients clearly above 1.5. The c -values tend to be larger for shorter times to maturity, but the differences between the maturity classes are small. The overnight return OR appears to be related to the c -coefficient in a similar way as DR, but with a smaller impact. The mean c value for OR1 ($r_t^o \leq -0.5\%$) is about 1.5, while it is about 1.2 in the OR4 group ($r_t^o > 0.5\%$).

To examine determinants of the c -coefficient in more detail, we estimate the following regression model in each year:

$$c_t = b_0 + \sum_{i=1}^7 b_i F_{i,t} + \varepsilon_t,$$

where $F_{i,t}$ is the value of determinant i on day t of the respective year, c_t is the estimated c -coefficient according to Eq. (6) on day t , b_i are regression coefficients and ε is an error term. Based on the time series of coefficients from these yearly regressions, we compute the Fama and MacBeth (1973) t -statistic to examine if an overall significant influence over the sample period exists. Our explanatory variables are the daily return (DR) and the overnight return (OR) as defined before, the ATM implied volatility (variable ATM), the slope of the smile function (Skew), and two variables related to net buying pressure of OTM puts (see Bollen and Whaley (2004)) and thin trading. Following Masset and Wallmeier (2010), we use trading volume (in Euro per day) as liquidity measure and the ratio of trading volume of puts to the trading volume of calls (per day) as a measure of net buying pressure (Put-Call Ratio). We also include the time to maturity in calendar days (variable TtM).

— *Insert Table 4 (p. 33) about here.* —

The regression results in Table 4 confirm that c is strongly related to DR. In each year, the slope coefficient of DR is significantly negative. The results for OR are mixed. In most years, the OR-coefficient is negative, but the Fama/MacBeth t -statistic suggests that the mean of the yearly coefficients is not significantly different from 0. The positive coefficients of ATM and Skew show that the characteristics of the smile function contribute to explaining the intraday smile movements. The higher the ATM implied volatility and the slope of the smile function, the stronger the shift in implied volatilities for a given index return. The results for net buying pressure are mixed. The ratio of put and call trading volume is positively related to c only for DAX options. Trading volume as such does not seem to be a determinant of smile movements. The adjusted R^2 coefficients are about 8.5% on average and significantly different from zero in each year. This degree of explanatory power is in line with our previous observation that the c -coefficient is relatively stable and does not follow clearly discernable patterns over time.

4.4 Day-to-day movements

The c -measure of our intraday analysis is based on a marginal analysis. In particular, the slope coefficient in the denominator of Eq. (6) is the *differential* change of implied volatility. For significant index moves, however, the *discrete* change in volatility also depends on the curvature of the smile function. Therefore, in this section, we examine day-to-day movements of implied volatilities.⁸ The enhanced smile regression model is particularly suitable for this analysis, because it provides a mapping from index level to smile profile, so that smile changes can be accurately matched to index returns. According to Eq. (2), the index level dependent smile is given by:

$$IV_t(M(X, S), S) = \beta_{0,t} + \beta_{1,t}M(X, S) + \beta_{2,t}M(X, S)^2 + \beta_{3,t}D \cdot M(X, S)^3 \\ + \gamma_t \ln S + \delta_t \ln S \cdot M(X, S) + \varepsilon_t,$$

where moneyness is a function of discounted strike price X and index level S . Let $S = \bar{S}_t$ denote the index level equal to the mean of the highest and lowest index level observed on day t . If the smile function remains constant from day $t - 1$ to t , the stock price change from \bar{S}_{t-1} to \bar{S}_t induces a change x_t of the implied volatility of an ATM option of

$$x_t = IV_{t-1}(M(\bar{S}_{t-1}, \bar{S}_t), \bar{S}_t) - IV_{t-1}(0, \bar{S}_{t-1}). \quad (7)$$

The additional change y_t due to a shift of the smile function is equal to

$$y_t = IV_{t-1}(M(\bar{S}_{t-1}, \bar{S}_t), \bar{S}_{t-1}) - IV_t(M(\bar{S}_{t-1}, \bar{S}_t), \bar{S}_t). \quad (8)$$

The variables x_t and y_t in Eq. (7) and (8) are defined in such a way that a *positive* ratio y_t/x_t indicates that the effect of moving along the initial smile is partly ($0 < y_t/x_t < 1$) or fully ($y_t/x_t \geq 1$) offset by shifts of the smile. For a stock price *decrease*, both x_t and y_t are typically *negative*, and vice versa.

⁸ I am grateful to Michael Kamal for suggesting the comparison of intraday and daily results.

To analyze the net effect of the change in volatility, we run the time-series regression:

$$y_t = a + cx_t + e_t \tag{9}$$

where a and c are regression coefficients and e is an error term. We expect coefficient a to be 0 (no drift). Coefficient c has a similar interpretation as before in the intraday analysis, i.e. $c = 0$ characterizes sticky moneyness and $c = 1$ corresponds to the sticky strike rule.

We additionally run the quadratic regression:

$$y_t = a_0 + a_1x_t + a_2x_t^2 + e_t, \tag{10}$$

where a_0, a_1 and a_2 are regression coefficients. The intraday analysis in Section 4.3 revealed that the ratio y_t/x_t depends on the daily return and therefore on x_t . Thus, we expect y_t/x_t to be higher the smaller x_t , which means that coefficient a_2 is supposed to be negative.

To be consistent with our previous intraday analysis, we also compute the mean of the ratio y_t/x_t . The mean is equal to the estimated c' coefficient in a regression of y_t/x_t on a constant:

$$y_t/x_t = c' + \epsilon_t. \tag{11}$$

We can interpret c' in Eq. (11) as an unconditional estimate of the ratio $-y_t/x_t$, while $-y_t/x_t$ in Eq. (9) is conditional on x_t . The regression results of Eq. (9) and Eq. (11) are shown in Table 5. The sample mean value c' lies between 1.20 and 1.34 while the median is always higher with values of 1.33 to 1.43. Regression (9) provides even higher estimated c -coefficients between 1.36 and 1.57. The latter values are similar to results found by Gatheral and Kamal (2010) for daily S&P500 options data.

— *Insert Table 5 (p. 34) about here.* —

— *Insert Figure 6 (p. 29) about here.* —

The difference between the estimated c' and c coefficients are only observed for daily data. In the intraday analysis, the mean values for c reported in Tables 1 to 3 are always close to the median as well as the slope coefficient of a regression analogous to (9).⁹ The main reason for this difference between daily and intraday results seems to be that the relation between y_t and x_t is nonlinear, as the significantly negative estimates of a_2 indicate. This can also be seen from the scatterplots in Figure 6 which include linear and quadratic regression lines. Thus, whether the best overall point estimate is about 1.3 or rather 1.5, depends on the time horizon and the loss function of an agent.

5 Conclusion

Using a high-quality database of high-frequency transactions in EuroStoxx 50 and DAX options, we show that the intraday relationship between index return and changes of implied volatilities is highly predictable. On average, about 96% of the variation of implied volatilities across all trades during one day can be explained by moneyness alone. When including index return as an additional explanatory variable in an enhanced smile model, the average adjusted R^2 rises to about 99%. Therefore, the regression model enables us to accurately measure the return-implied volatility relationship. We find that the three commonly proposed traders' rules of thumb (sticky moneyness, sticky strike, sticky implied tree) are not compatible with the empirical data over any extended time period. The intraday reaction of the smile profile is typically about 1.3 times stronger than the sticky strike rule predicts. Day-to-day movements of the smile are consistent with a higher overall adjustment factor of about 1.5, depending on the specific assumptions underlying the estimation. More important than the average parameter is the finding that the adjustment

⁹ In this regression, $\gamma\sqrt{T-t}$ is the independent variable and $(\beta_1 + \delta \ln \bar{S})$ the dependent variable; see Eq. (6).

factor is strongly associated with the index return on the same day. A decrease of the index return by one percentage point tends to increase the factor by about 0.1. These results turn out to be stable over time and time to maturity classes.

Our findings can be used to test option pricing models by comparing the model implied leverage coefficient with the empirical estimates. They are also relevant for hedging, because the delta hedge ratio has to be adapted to predictable index-dependent shifts in the smile structure (see Rosenberg (2000)). According to our results, explanations for the leverage effect should be consistent with the fact that it has existed on the intraday level almost constantly for more than ten years. In general, this study shows that index-related changes of the smile in option prices are highly predictable, and the relationship between index and option markets is closer than previous literature suggests.

References

- Bollen, N. and Whaley, R. (2004). Does net buying pressure affect the shape of implied volatility functions?, *Journal of Finance* **59**: 711–753.
- Christoffersen, P. (2012). *Elements of Financial Risk Management*, 2nd edn, Academic Press.
- Christoffersen, P., Heston, S. and Jacobs, K. (2009). The shape and term structure of the index option smirk: Why multifactor stochastic volatility models work so well, *Management Science* **55**: 1914–1932.
- Constantinides, G., Jackwerth, J. and Perrakis, S. (2009). Mispricing of S&P 500 index options, *Review of Financial Studies* **22**: 1247–1277.
- Cont, R. and Fonseca, J. (2002). Dynamics of implied volatility surfaces, *Quantitative Finance* **2**: 45–60.
- Crépey, S. (2004). Delta-hedging vega risk?, *Quantitative Finance* **4**: 559–579.

- Daglish, T., Hull, J. and Suo, W. (2007). Volatility surfaces: Theory, rules of thumb, and empirical evidence, *Quantitative Finance* **7**: 507–524.
- Derman, E. (1999). *Regimes of Volatility: Some Observations on the Variation of S&P 500 Implied Volatilities*, Quantitative Strategies Research Notes, Goldman Sachs.
- Dumas, B., Fleming, J. and Whaley, R. (1998). Implied volatility functions: Empirical tests, *JF* **53**: 2059–2106.
- Fama, E. and MacBeth, J. (1973). Risk, return, and equilibrium, *Journal of Political Economy* **81**: 607–636.
- Fengler, M. (2005). *Semiparametric Modeling of Implied Volatility*, Lecture Notes in Finance, Springer.
- Fengler, M., Härdle, W. and Mammen, E. (2007). A semiparametric factor model for implied volatility surface dynamics, *Journal of Financial Econometrics* **5**: 189–218.
- Fengler, M., Härdle, W. and Villa, C. (2003). The dynamics of implied volatilities: A common principle components approach, *Review of Derivatives Research* **6**: 179–202.
- Figlewski, S. and Wang, X. (2000). *Is the Leverage Effect a Leverage Effect?*, Working Paper Series 00-37, New York University.
- Gatheral, J. and Kamal, M. (2010). Implied volatility surface, in R. Cont (ed.), *Encyclopedia of Quantitative Finance*, John Wiley, pp. 926–931.
- Goncalves, S. and Guidolin, M. (2006). Predictable dynamics in the S&P 500 index options volatility surface, *Journal of Business* **79**: 1591–1635.
- Hafner, R. (2004). *Stochastic Implied Volatility*, Lecture Notes in Economics and Mathematical Systems 545, Springer -Verlag Berlin Heidelberg.
- Hafner, R. and Wallmeier, M. (2001). The dynamics of DAX implied volatilities, *International Quarterly Journal of Finance* **1**: 1–27.
- Han, B. (2008). Investor sentiment and option prices, *Review of Financial Studies* **21**: 387–414.

- Hentschel, L. (2003). Errors in implied volatility estimation, *Journal of Financial and Quantitative Analysis* **38**: 779–810.
- Kim, S. (2009). The performance of traders' rules in options markets, *Journal of Futures Markets* **29**: 999–1020.
- Ledoit, O., Santa-Clara, P. and Yan, S. (2002). *Relative Pricing of Options with Stochastic Volatility*, Working Paper, UCLA.
- Masset, P. and Wallmeier, M. (2010). A high-frequency investigation of the interaction between volatility and DAX returns, *European Financial Management* **16**: 327–344.
- Natenberg, S. (1994). *Option Volatility and Pricing*, Chicago, Cambridge.
- Pena, I., Rubio, G. and Serna, G. (1999). Why do we smile? On the determinants of the implied volatility function, *Journal of Banking and Finance* **23**: 1151–1179.
- Rosenberg, J. (2000). Implied volatility functions: A reprise, *JD* **7**(Spring): 51–64.
- Schönbucher, P. (1999). A market model for stochastic implied volatility, *Philosophical Transactions of the Royal Society, Series A* **357**(1758): 2071–2092.
- Shimko, D. (1993). Bounds of probability, *RISK* **6**(4): 34–37.
- Skiadopoulos, G., Hodges, S. and Clewlow, L. (1999). The dynamics of the S&P 500 implied volatility surface, *Review of Derivatives Research* **3**: 263–282.

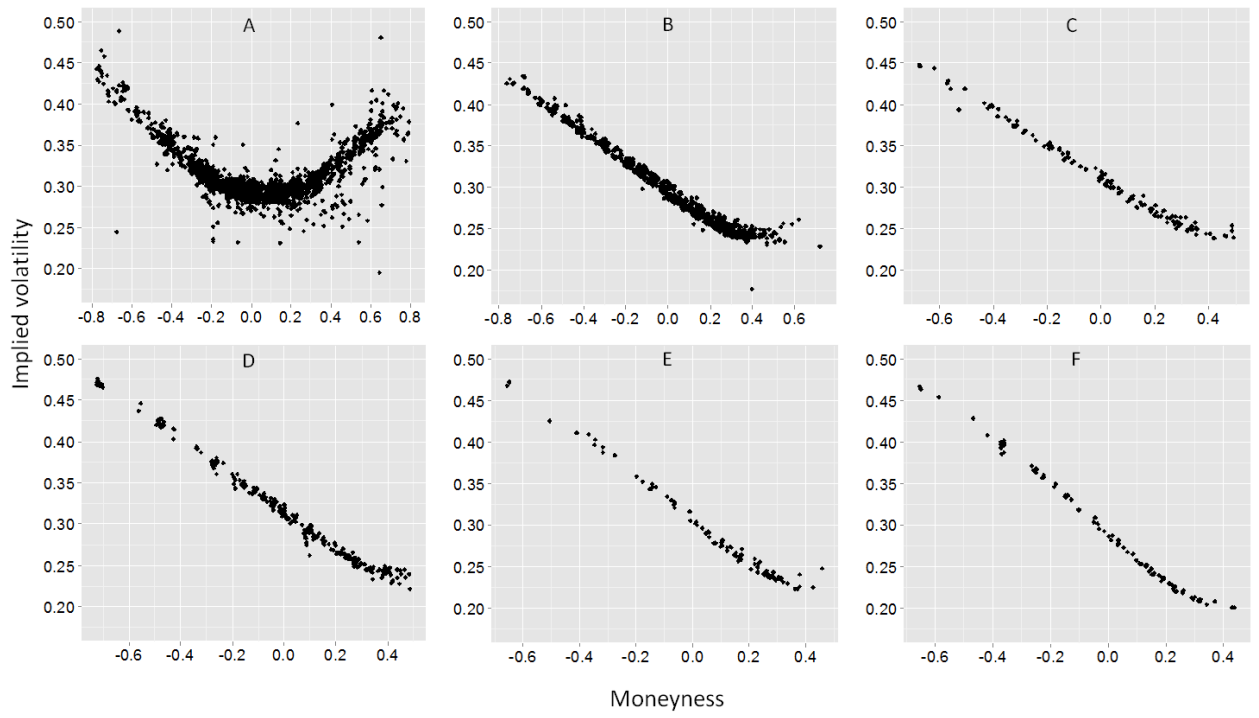


Figure 2: Implied volatilities of ODAX trades on 14th December 2011. Times to maturity: 2 (A), 37 (B), 65 (C), 93 (D), 184 (E), 373 (F) calendar days.

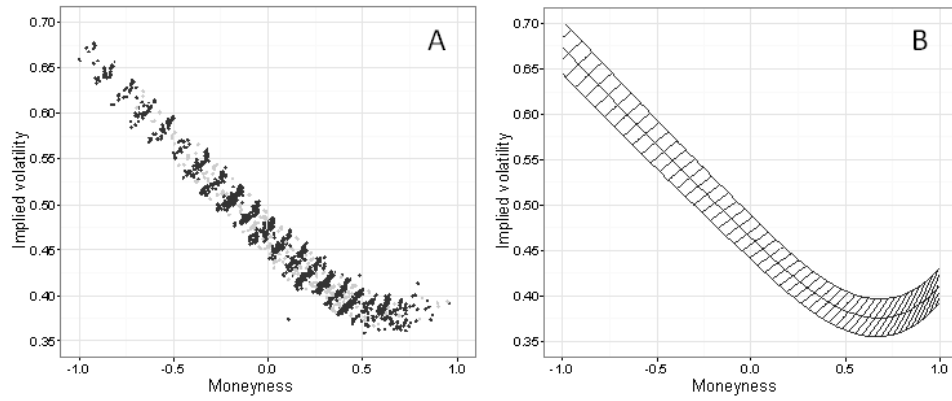


Figure 3: Smile profile and regression function of the ODAX option with time to maturity of 30 calendar days on 21st September 2009. Graph A: all trades; different grey shades for neighboring strikes (distance 50). Graph B: regression function for minimum, maximum and mean index level. In addition, for each strike between 3050 to 6000 (at intervals of 50), the regression function is shown for index levels between the maximum and minimum on this day.

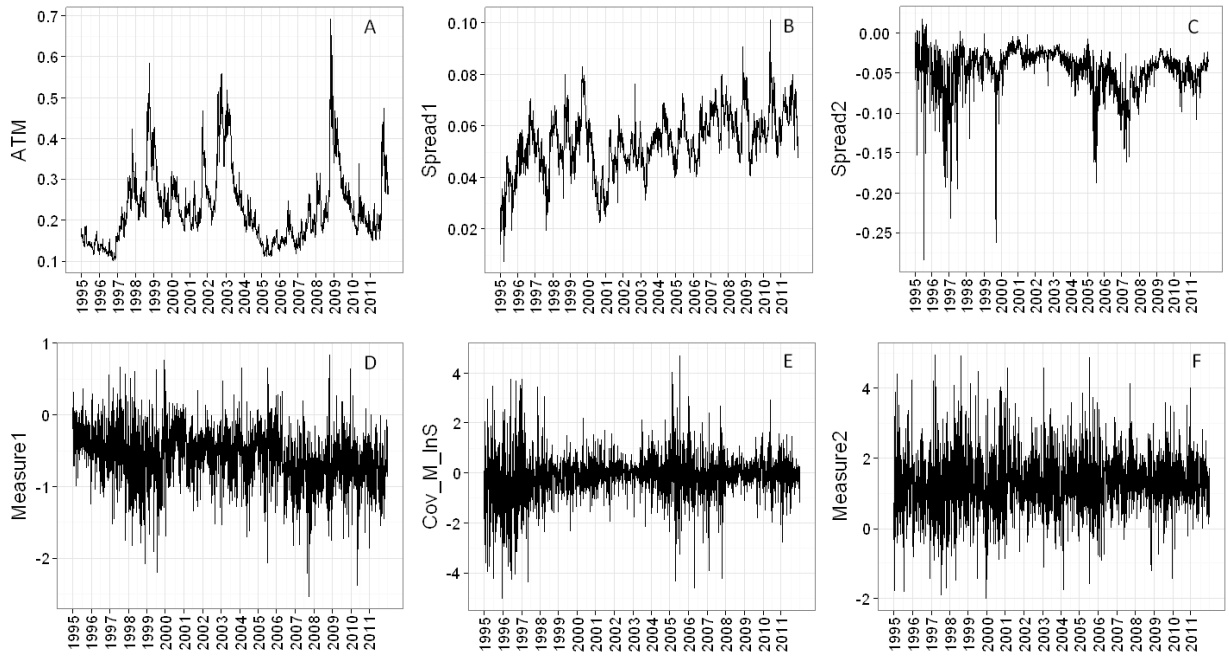


Figure 4: Estimated smile characteristics of ODAX options with a time to maturity between 42 and 67 calendar days from 1995 to 2011. ATM is the ATM implied volatility according to the enhanced smile model of Eq. (2). Spread1 (Spread2) is the difference between the implied volatility of OTM puts (calls) and ATM implied volatility. Measure1 is coefficient γ in the enhanced smile model. Cov_m_lnS is coefficient δ of the interaction term of moneyness and index level. Measure2 is coefficient c according to Eq. (6).

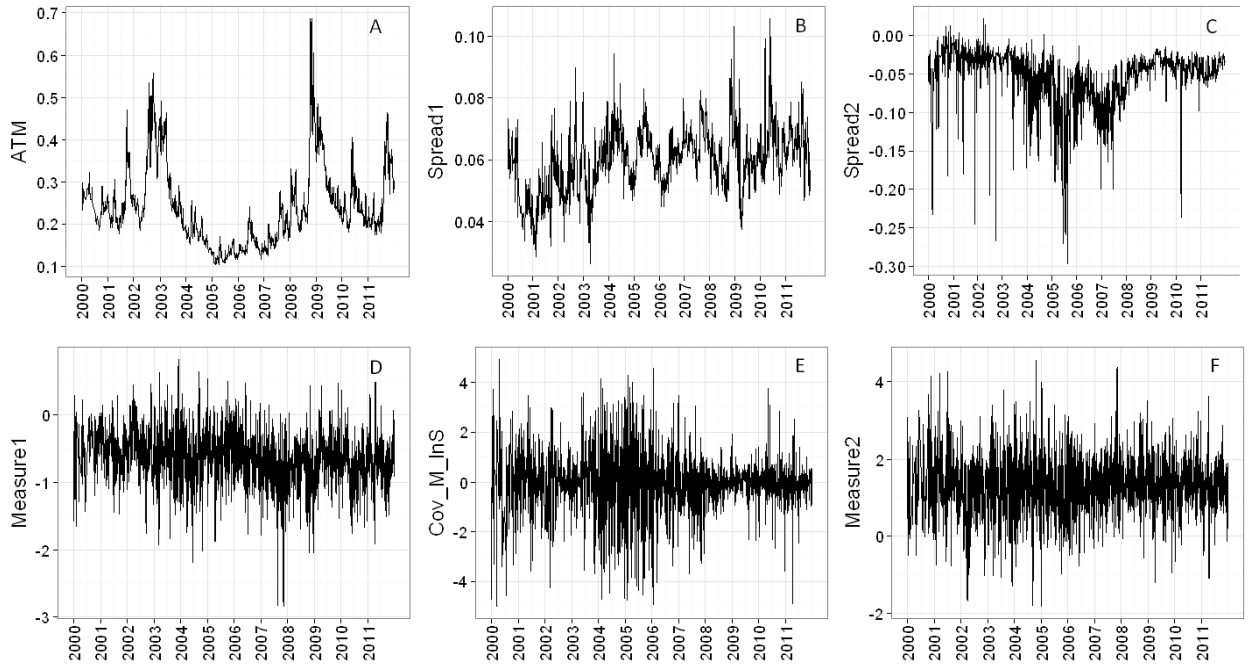


Figure 5: Estimated smile characteristics of OESX options with a time to maturity between 42 and 67 calendar days from 2000 to 2011. ATM is the ATM implied volatility according to the enhanced smile model of Eq. (2). Spread1 (Spread2) is the difference between the implied volatility of OTM puts (calls) and ATM implied volatility. Measure1 is coefficient γ in the enhanced smile model. Cov_m_InS is coefficient δ of the interaction term of moneyness and index level. Measure2 is coefficient c according to Eq. (6).

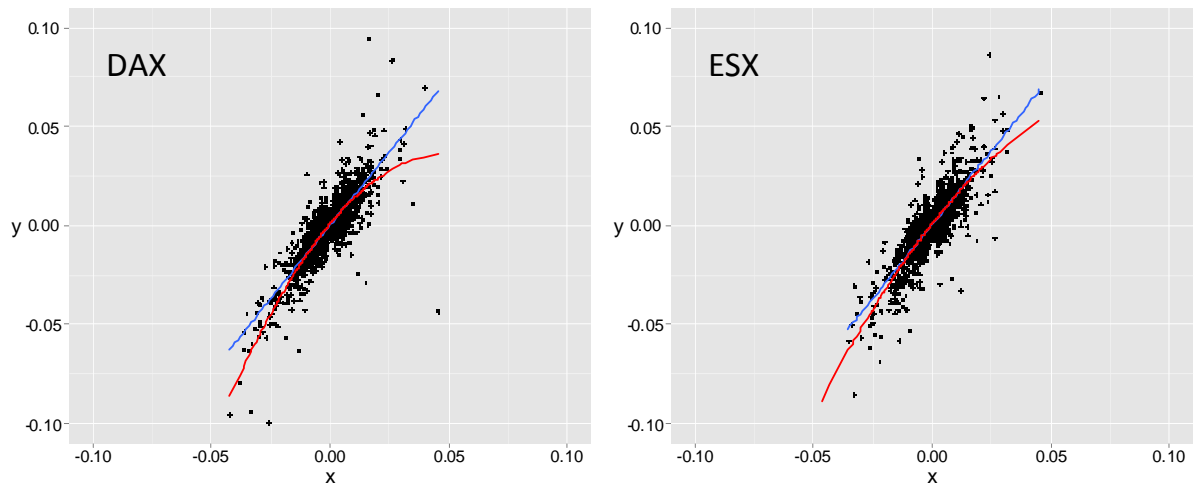


Figure 6: Scatterplots of day-to-day movements of the smile. x is the change of the implied volatility from day $t - 1$ to day t along the initial smile function (for an option which is at-the-money on day $t - 1$). y is the additional change in the implied volatility due to a shift in the implied volatility. The sticky moneyness rule predicts a slope coefficient of 0, the sticky strike rule a slope coefficient of 1. The lines show the estimated linear and quadratic regression functions. The estimated slope coefficients of the linear regressions are 1.52 (DAX) and 1.55 (ESX) with adjusted R^2 coefficients of 72% and 71% (see Table 5 for more detail). In both cases, the quadratic term is significantly negative on the 1% level. Data are from 1995 to 2011 for DAX and from 2000 to 2011 for ESX.

		ODAX			OESX		
		TtM1 (N=2770)	TtM2 (N=2789)	TtM3 (N=2219)	TtM1 (N=2694)	TtM2 (N=2609)	TtM3 (N=1805)
Panel A: Simple smile regression							
β_0	Mean	0.2383	0.2387	0.2355	0.2416	0.2407	0.2416
	Std.	0.1027	0.0925	0.0844	0.1029	0.0945	0.0897
β_1	Mean	-0.1494	-0.1777	-0.1941	-0.1592	-0.1910	-0.2145
	Std.	0.0465	0.0475	0.0464	0.0445	0.0438	0.0444
β_2	Mean	0.0594	0.0257	0.0085	0.0659	0.0293	-0.0017
	Std.	0.0695	0.0614	0.0627	0.0719	0.0743	0.0810
β_3	Mean	0.6576	0.7870	0.9414	0.7919	1.0003	1.1921
	Std.	0.7204	0.7216	0.8367	1.0351	1.1415	1.3735
Mean adj. R ²		96.6%	98.3%	98.5%	96.5%	97.8%	97.9%
Panel B: Enhanced smile regression							
β_0^*	Mean	0.2381	0.2385	0.2353	0.2394	0.2374	0.2372
	Std.	0.1024	0.0922	0.0841	0.1026	0.0943	0.0893
β_1^*	Mean	-0.1490	-0.1772	-0.1935	-0.1584	-0.1905	-0.2148
	Std.	0.0469	0.0474	0.0461	0.0452	0.0446	0.0454
β_2	Mean	0.0632	0.0277	0.0116	0.0684	0.0306	-0.0009
	Std.	0.0755	0.0629	0.0606	0.0729	0.0728	0.0768
β_3	Mean	0.6460	0.7671	0.9018	0.7821	0.9831	1.1707
	Std.	0.7269	0.6985	0.7924	1.0387	1.1167	1.3169
γ	Mean	-0.7603	-0.6094	-0.5331	-0.7938	-0.6529	-0.5834
	Std.	0.4617	0.3350	0.2927	0.4878	0.3704	0.3482
δ	Mean	-0.0069	0.0003	-0.0210	0.0705	-0.0401	-0.0809
	Std.	0.7281	0.6142	0.7919	1.1912	1.0804	1.1969
c	Mean	1.3407	1.3105	1.2790	1.3130	1.3072	1.2723
	Std.	0.7493	0.6571	0.6533	0.7648	0.7013	0.7371
Mean adj. R ²		98.4%	99.2%	99.2%	97.9%	98.7%	98.6%

Table 1: Descriptive statistics of smile regression parameters from January 2000 to December 2010 (both for ODAX and OESX). The time to maturity ranges from 14 to 39 days (TtM1), 42 to 67 days (TtM2), and 70 to 95 days (TtM3).

Year	TtM1			TtM2			TtM3		
	γ	c	R^2_{adj}	γ	c	R^2_{adj}	γ	c	R^2_{adj}
Panel A: ODAX									
1995	-0.4136	1.3141	90.5%	-0.3160	1.2723	93.9%	-0.2580	1.1807	92.6%
1996	-0.5812	1.0487	96.3%	-0.4450	1.0659	98.1%	-0.4152	1.1532	98.1%
1997	-0.6118	1.1914	96.0%	-0.4307	1.1210	96.9%	-0.3737	1.1429	96.7%
1998	-0.9291	1.4214	98.2%	-0.7011	1.4047	99.2%	-0.5947	1.3427	98.6%
1999	-0.7483	1.2755	98.5%	-0.6366	1.2508	99.5%	-0.5234	1.1053	99.4%
2000	-0.4271	1.2408	97.6%	-0.3557	1.1617	98.7%	-0.3014	1.0821	98.8%
2001	-0.6426	1.4110	97.3%	-0.5127	1.4252	98.4%	-0.4272	1.3321	98.6%
2002	-0.6679	1.2952	97.8%	-0.4970	1.2281	98.8%	-0.4375	1.2269	98.9%
2003	-0.6331	1.3246	97.2%	-0.5027	1.2471	98.9%	-0.4360	1.1940	99.0%
2004	-0.7214	1.4561	98.6%	-0.5968	1.3630	99.4%	-0.5077	1.2724	98.9%
2005	-0.5306	1.1529	98.2%	-0.4738	1.2562	99.2%	-0.4515	1.2798	99.4%
2006	-0.8666	1.3705	99.1%	-0.6648	1.3745	99.5%	-0.5714	1.3618	99.6%
2007	-1.1012	1.3940	99.4%	-0.8612	1.4099	99.6%	-0.7289	1.4189	99.6%
2008	-0.9709	1.4515	98.7%	-0.7756	1.3566	99.2%	-0.6618	1.3039	99.1%
2009	-0.6811	1.2475	99.0%	-0.5883	1.2306	99.5%	-0.5411	1.2435	99.4%
2010	-0.9133	1.4365	99.0%	-0.7403	1.3834	99.7%	-0.6421	1.3347	99.7%
2011	-0.9600	1.3130	98.7%	-0.7392	1.2888	99.3%	-0.6420	1.2699	99.5%
Panel B: OESX									
2000	-0.4951	1.1989	94.6%	-0.4273	1.1534	98.1%	-0.4086	1.2047	98.1%
2001	-0.6476	1.3439	96.9%	-0.5247	1.3784	97.8%	-0.5183	1.4187	97.2%
2002	-0.7034	1.2726	96.7%	-0.5181	1.1328	98.3%	-0.4891	1.2090	98.2%
2003	-0.6836	1.3326	97.4%	-0.5870	1.2899	97.6%	-0.5233	1.2426	98.7%
2004	-0.7627	1.2594	98.2%	-0.6865	1.3796	98.7%	-0.6580	1.3840	99.0%
2005	-0.6432	1.0746	98.6%	-0.5458	1.2207	98.8%	-0.4074	1.0254	99.0%
2006	-0.8277	1.2918	98.8%	-0.6352	1.2781	98.9%	-0.5418	1.2192	98.7%
2007	-1.0644	1.2864	99.2%	-0.8570	1.3672	99.3%	-0.6888	1.3094	99.0%
2008	-0.9821	1.4980	98.5%	-0.7954	1.4208	98.8%	-0.6777	1.3431	98.6%
2009	-0.7165	1.3218	98.8%	-0.6227	1.3133	98.8%	-0.5671	1.2823	98.7%
2010	-0.9578	1.4408	98.9%	-0.7759	1.3899	99.3%	-0.6774	1.3348	98.9%
2011	-0.9695	1.3902	98.1%	-0.7217	1.2835	99.2%	-0.6292	1.2554	98.6%

Table 2: Mean estimates of daily measures of asymmetric volatility by year. The time to maturity ranges from 14 to 39 days (TtM1), 42 to 67 days (TtM2), and 70 to 95 days (TtM3).

	TtM1			TtM2			TtM3			
	N	γ	c	N	γ	c	N	γ	c	
Panel A: ODAX (1995-2011)										
DR	1	98	-1.0480	1.7941	108	-0.7998	1.6984	82	-0.6514	1.5476
	2	149	-0.9617	1.7761	146	-0.7276	1.5962	113	-0.6072	1.5583
	3	432	-0.8726	1.5991	441	-0.6840	1.5137	317	-0.5906	1.4333
	4	1174	-0.7404	1.3593	1161	-0.5797	1.3072	868	-0.5175	1.2939
	5	1410	-0.6747	1.2022	1414	-0.5459	1.2108	1045	-0.4858	1.1966
	6	439	-0.6406	1.1190	433	-0.5309	1.1371	319	-0.4686	1.1018
	7	125	-0.6834	1.1663	128	-0.5404	1.1563	97	-0.4942	1.1497
	8	69	-0.5205	0.9237	75	-0.4192	0.9080	62	-0.3560	0.8706
OR	1	391	-0.9084	1.5305	386	-0.7079	1.4667	285	-0.6240	1.4344
	2	1348	-0.7483	1.3787	1342	-0.5916	1.3330	1013	-0.5143	1.2900
	3	1612	-0.6830	1.2610	1620	-0.5444	1.2328	1245	-0.4860	1.2255
	4	545	-0.6996	1.1621	558	-0.5747	1.2007	360	-0.5050	1.1293
Panel B: OESX (2000-2011)										
DR	1	85	-1.1507	1.8569	83	-0.9027	1.6923	63	-0.7340	1.5720
	2	132	-1.1221	1.8429	127	-0.8230	1.6629	76	-0.7020	1.5352
	3	335	-0.8993	1.5251	319	-0.7511	1.4948	230	-0.6448	1.4113
	4	793	-0.8141	1.3330	756	-0.6654	1.3315	532	-0.5940	1.3015
	5	839	-0.7372	1.2150	829	-0.6140	1.2278	558	-0.5588	1.2091
	6	345	-0.6457	1.0866	325	-0.5498	1.1352	228	-0.5256	1.1567
	7	95	-0.6733	1.0722	99	-0.5909	1.1783	68	-0.5286	1.1541
	8	70	-0.5769	1.0296	71	-0.4951	1.0142	50	-0.4313	0.9380
OR	1	157	-1.0759	1.6089	149	-0.8641	1.5484	124	-0.7146	1.4346
	2	1110	-0.8231	1.3807	1069	-0.6575	1.3375	721	-0.5962	1.3333
	3	1261	-0.7241	1.2192	1229	-0.6142	1.2554	834	-0.5481	1.2016
	4	166	-0.8605	1.2935	162	-0.7211	1.2791	126	-0.6144	1.2316

Table 3: Mean estimates of daily measures of asymmetric volatility by classes of daily return (DR) and overnight return (OR). The time to maturity ranges from 14 to 39 days (TtM1), 42 to 67 days (TtM2), and 70 to 95 days (TtM3). The days of the sample period are grouped into eight daily return and four overnight return groups. Group DR1 includes all days with a return below -0.03, group DR8 all days with a return above 0.03. The groups in-between cover a return interval of one percentage point each, in ascending order. OR is defined as the log return of the index based on the opening price of the current day and the closing price of the previous trading day. OR groups are built in ascending order with return thresholds of 0.005, 0.0, and 0.005. Sorting is done in one dimension, either by DR or OR.

	DR	OR	TtM	ATM	Skew	Trading Volume	Call Ratio	Adj. R ²
Panel A: ODAX								
1995	-23.84 ^a	-22.03 ^a	0.0005	-2.7107	3.8245 ^c	2.98E-07 ^a	0.1087 ^b	8.6%
1996	-31.19 ^a	-14.20 ^b	0.0013	4.3701 ^c	1.3766	-2.42E-08	0.0488	10.2%
1997	-43.40 ^a	2.65	-0.0022	1.4728 ^b	2.3113 ^c	-3.91E-08 ^b	-0.0314	10.3%
1998	-14.53 ^a	-16.61 ^a	-0.0007	-0.2848	1.2761	2.08E-08	0.0452	12.1%
1999	-19.35 ^a	-3.67	-0.0050 ^a	1.4808 ^b	-0.9242	-5.02E-08 ^a	0.0406	14.0%
2000	-13.12 ^a	57.68 ^b	0.0013	3.9148 ^b	5.2990 ^a	3.37E-08 ^b	0.0337 ^c	9.5%
2001	-5.98 ^a	37.00 ^b	0.0024	0.3156	3.4597 ^a	5.34E-09	0.0554 ^a	5.6%
2002	-5.22 ^a	-16.25	-0.0025 ^c	0.1515	-0.8987	2.80E-09	-0.0064	5.7%
2003	-5.45 ^a	-22.47	0.0004	-0.3329	1.4546	3.24E-08 ^b	0.0068	3.1%
2004	-7.50 ^b	-7.62	-0.0010	6.1724 ^a	2.6584 ^b	2.44E-08	-0.0016	5.5%
2005	-37.65 ^a	-39.03 ^a	0.0000	5.2865 ^b	-0.5846	-5.19E-09	0.0029	11.7%
2006	-13.46 ^a	-9.30	0.0000	0.2663	-1.7777 ^a	1.71E-08	0.0200	5.2%
2007	-17.21 ^a	-5.54	0.0010	1.6307 ^c	1.6654 ^b	-4.17E-09	-0.0094	6.8%
2008	-9.72 ^a	-2.73	-0.0006	0.2638	1.2301	9.16E-10	0.0138	15.7%
2009	-9.59 ^a	-17.60 ^a	-0.0011	0.1004	-0.3687	-8.39E-10	0.0150	9.6%
2010	-9.93 ^a	1.95	-0.0012	1.4502	0.2976	8.58E-09 ^c	-0.0007	4.0%
2011	-6.64 ^a	-9.64 ^a	-0.0007	-0.0866	-1.1108	7.77E-09 ^b	-0.0073	9.1%
F/MB	-5.73 ^a	-0.94	-1.15	2.47 ^b	2.36 ^b	1.06	2.45 ^b	
Panel B: OESX								
2000	-12.67 ^a	20.37	0.0013	2.1648	3.2477 ^c	3.78E-08	0.0162	4.2%
2001	-6.69 ^a	-17.85	0.0033	0.5016	1.2730	5.03E-08	0.0312 ^b	3.3%
2002	-6.25 ^a	-26.23	-0.0043 ^b	-0.0147	-1.8068 ^c	1.08E-08	-0.0055	5.2%
2003	-10.40 ^a	-4.88	0.0005	0.7935 ^c	1.6152	3.72E-09	0.0070	5.2%
2004	-9.78 ^b	-26.54	0.0012	5.6427 ^a	0.1915	-8.20E-09	-0.0018	3.9%
2005	-45.91 ^a	64.68	0.0020	5.1670 ^b	2.5864 ^b	-2.46E-08	-0.0044	14.2%
2006	-18.33 ^a	2.05	-0.0003	4.3278	1.6346	2.92E-09	-0.0157	7.9%
2007	-15.36 ^a	-17.99 ^a	0.0021 ^c	3.6963 ^a	3.6594 ^a	3.31E-09	-0.0002	11.8%
2008	-8.31 ^a	-15.45 ^a	0.0007	0.4159 ^a	2.5000	1.91E-09 ^b	0.0094	16.4%
2009	-11.35 ^a	-15.61 ^a	0.0001	0.6609 ^c	1.0244	-1.50E-09	0.0178	11.0%
2010	-9.92 ^a	-1.82	0.0003	2.8160 ^a	1.5125 ^b	2.11E-09	-0.0014	10.6%
2011	-7.42 ^a	-2.76	-0.0013	0.6793 ^b	-0.2500	4.34E-09 ^a	-0.0140 ^c	7.8%
F/MB	-4.34 ^a	-0.48	0.81	3.81 ^a	3.24 ^a	1.22	0.81	

Table 4: Regression results for determinants of leverage measures. The table shows estimated regression coefficients of yearly regressions of leverage coefficient c on explanatory variables. DR is daily return, OR overnight return, TtM the time to maturity in days, ATM the at-the-money implied volatility, Skew the slope of the smile function, Trading Volume is trading volume measured in Euro per day, and Put-Call Ratio is the ratio of trading volume of puts to the trading volume of calls (per day). Significance levels of 1%, 5% and 10% are indicated by superscripts a, b and c. F/MB shows t-statistics based on the time series of yearly coefficient estimates according to the Fama/MacBeth (1973) method.

Option, TtM	\hat{c}'	Median	Linear regression			Quadratic regression			
			\hat{a}	\hat{c}	R_{adj}^2	\hat{a}_0	\hat{a}_1	\hat{a}_2	R_{adj}^2
ODAX, 1	1.339	1.431	< 0.001	1.506 ^a	66.3%	0.001 ^a	1.474 ^a	-10.300 ^a	68.2%
ODAX, 2	1.310	1.398	< 0.001	1.519 ^a	71.9%	0.001 ^a	1.448 ^a	-14.977 ^a	74.7%
ODAX, 3	1.258	1.379	< 0.001	1.409 ^a	73.3%	0.000	1.423 ^a	0.343	73.3%
OESX, 1	1.233	1.361	< 0.001	1.574 ^a	71.2%	0.001	1.565 ^a	-5.404 ^a	71.6%
OESX, 2	1.255	1.376	< 0.001	1.550 ^a	70.5%	0.001	1.529 ^a	-8.397 ^a	71.2%
OESX, 3	1.206	1.330	< 0.001	1.369 ^a	58.3%	0.001	1.417 ^a	-14.218 ^a	61.3%

Table 5: Regression results for day-to-day movements. The table shows results of regression models (9), (10) and (11). Median is the median of (y_t/x_t) , and \hat{c}' is the mean of (y_t/x_t) . TtM is the time-to-maturity class. Superscript a indicates significance on the 1 percent level (two-sided test).

Author

Martin WALLMEIER

Professor, Department of Finance and Accounting, University of Fribourg / Switzerland, Bd. de Pérolles 90, CH-1700 Fribourg, martin.wallmeier@unifr.ch

Abstract

We present a new method to measure the intraday relationship between movements of implied volatility smiles and stock returns. It is based on an enhanced smile regression model which captures patterns in the intraday data which have not yet been reported in the literature.

Using transaction data for exchange-traded EuroStoxx 50 options from 2000 to 2011 and DAX options from 1995 to 2011, we show that, on average, about 99% of the intraday variation of implied volatility can be explained by moneyness and changes in the index level. Compared to the typical smile regression with moneyness alone, about 50% of the remaining errors can be attributed to movements in the underlying index. We find that the intraday evolution of volatility smiles is generally not consistent with traders' rules of thumb such as the sticky strike or sticky delta rule. On average, the impact of index return on implied volatility is 1.3 to 1.5 times stronger than the sticky strike rule predicts. The main factor driving variations of this adjustment factor is the index return. Our results have implications for option valuation, hedging and the understanding of the leverage effect.

Keywords

Volatility smile, implied volatility, leverage effect, index options, highfrequency data

JEL Classification

G11; G14; G24

Citation proposal

Wallmeier Martin. 2012. «Smile in Motion: An Intraday Analysis of Asymmetric Implied Volatility». Working Papers SES 427, Faculty of Economics and Social Sciences, University of Fribourg (Switzerland)

Working Papers SES

Last published :

421 Isakov D., Marti D.: Technical Analysis with a Long-Term Perspective: Trading Strategies and Market Timing Ability; 2011

422 Dembinski P.: Encyclical Letter "Caritas in Veritate": An Economist's Reading; 2011

423 Panzera F.: Price stability and financial imbalances: rethinking the macrofinancial framework after the 2007-8 financial crisis; 2011

424 Dafflon B.: The Political Economy of Decentralisation in Sikkim: Strengthening Gram Panchayat Planning and Budgeting; 2011

425 Dafflon B., Daguet S.: Performance measurement in environmental management at the local level: an experiment and proposal with reference to Switzerland; 2012

426 Dafflon B.: Voluntary amalgamation of local governments: the Swiss debate in the European context; 2012

Catalogue and download links:

<http://www.unifr.ch/ses/wp>

http://doc.rero.ch/collection/UNIFR_WORKING_PAPERS_SES